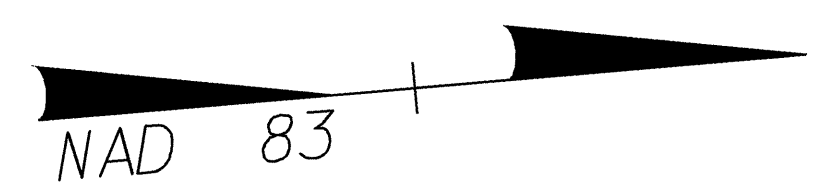


UTILITIES BY OTHERS

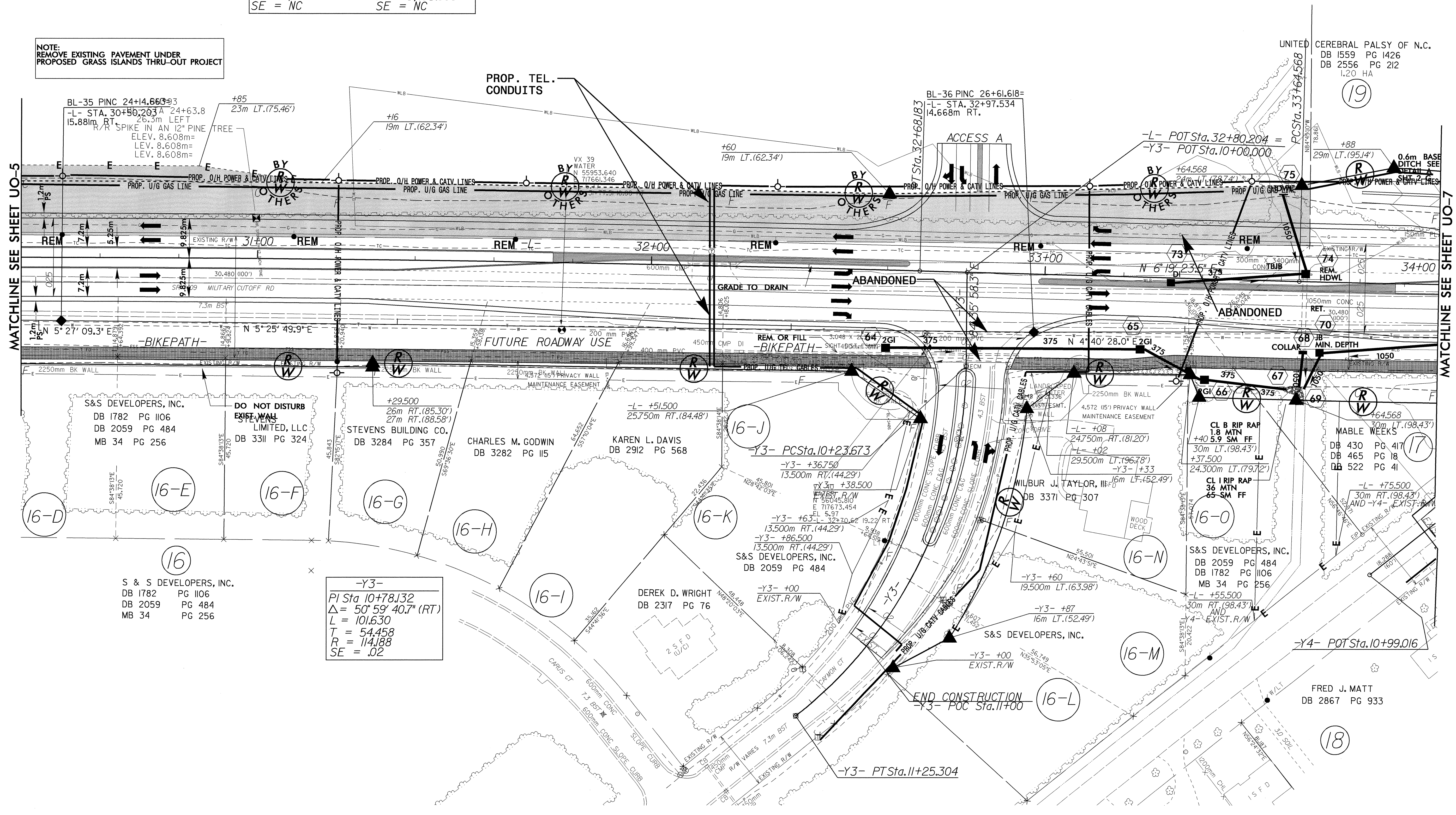
NOTE: ALL PROPOSED UTILITY WORK SHOWN ON THIS SHEET WILL BE DONE BY OTHERS

BRODY ZIMMER, LLC
DB 2891 PG 422 (4A)

-L-	
PI Sta. 30+38.034	PI Sta. 35+26.422
$\Delta = 2^{\circ}55'51.5"$ (RT)	$\Delta = 5^{\circ}18'10.7"$ (LT)
L = 460.397	L = 323.478
T = 230.249	T = 161.854
R = 9,000.000	R = 3,495.000
SE = NC	SE = NC



NOTE: REMOVE EXISTING PAVEMENT UNDER PROPOSED GRASS ISLANDS THRU-OUT PROJECT



MATCHLINE SEE SHEET UO-5

MATCHLINE SEE SHEET UO-7

S&S DEVELOPERS, INC.
DB 1782 PG 1106
DB 2059 PG 484
MB 34 PG 256

DO NOT DISTURB
EXISTING WALL
LIMITED, LLC
DB 3311 PG 324

+29.500
26m RT.(85.30')
27m RT.(88.58')

STEVENS BUILDING CO.
DB 3284 PG 357

CHARLES M. GODWIN
DB 3282 PG 115

KAREN L. DAVIS
DB 2912 PG 568

DEREK D. WRIGHT
DB 2317 PG 76

S&S DEVELOPERS, INC.
DB 2059 PG 484

WILBUR J. TAYLOR, III
DB 3371 PG 307

S&S DEVELOPERS, INC.
DB 2059 PG 484
DB 1782 PG 1106
MB 34 PG 256

FRED J. MATT
DB 2867 PG 933

-Y3-	
PI Sta. 10+78.132	
$\Delta = 50^{\circ}59'40.7"$ (RT)	
L = 101.630	
T = 54.458	
R = 114.188	
SE = .02	

04/25/21 08:25:00 10:55 R:\Utilities\2734-U-6\UO-6.dwg