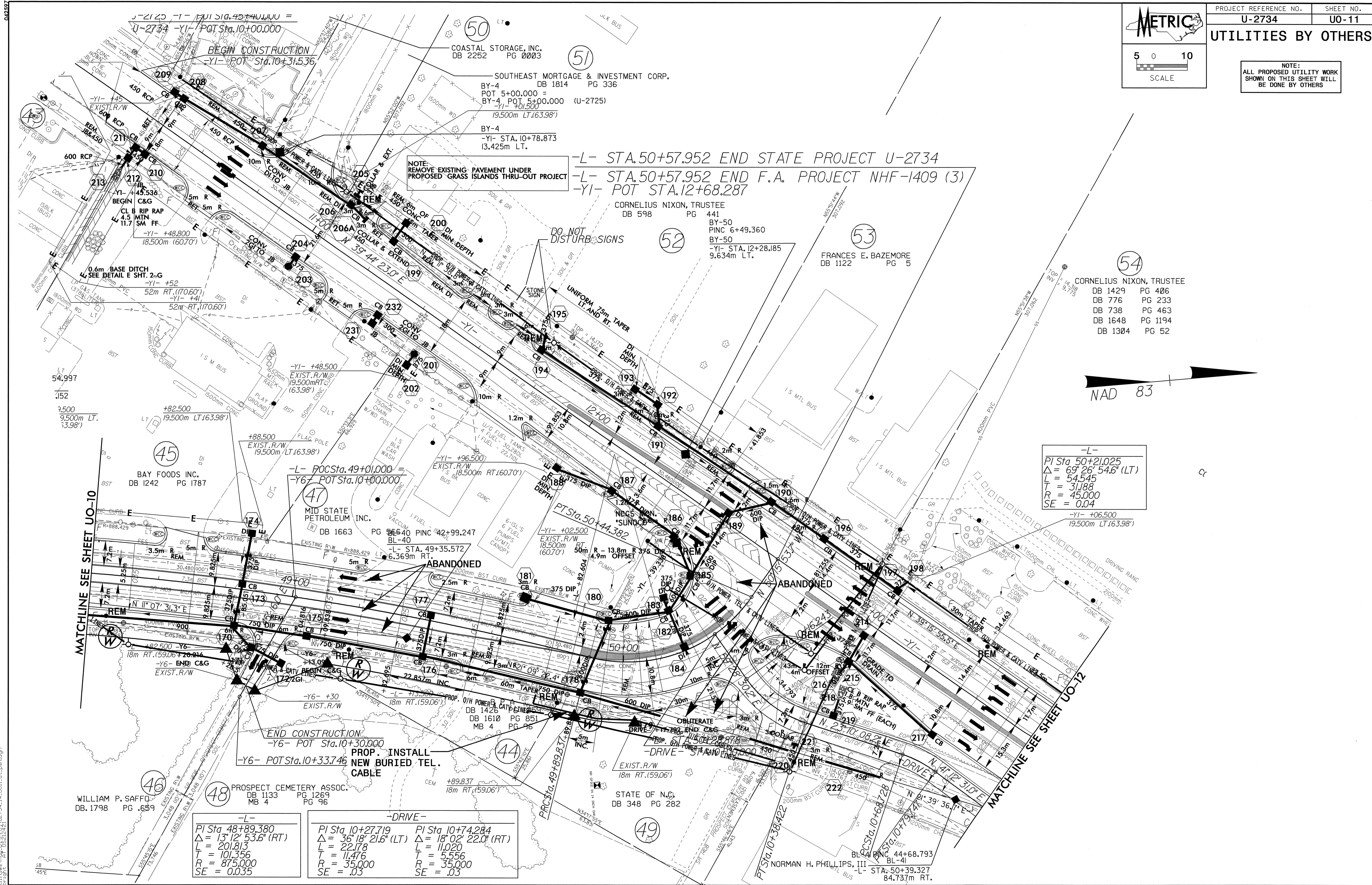


UTILITIES BY OTHERS

NOTE: ALL PROPOSED UTILITY WORK SHOWN ON THIS SHEET WILL BE DONE BY OTHERS



NOTE: REMOVE EXISTING PAVEMENT UNDER PROPOSED GRASS ISLANDS THRU-OUT PROJECT

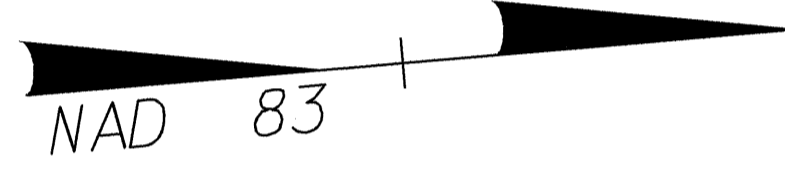
-L- STA. 50+57.952 END STATE PROJECT U-2734  
-L- STA. 50+57.952 END F.A. PROJECT NHF-1409 (3)  
-YI- POT STA. 12+68.287

-L-  
PI Sta 50+21.025  
Δ = 69° 26' 54.6" (LT)  
L = 54.545  
T = 31.188  
R = 45.000  
SE = 0.04

-L-  
PI Sta 48+89.380  
Δ = 13° 12' 53.6" (RT)  
L = 201.813  
T = 101.356  
R = 875.000  
SE = 0.035

-DRIVE-  
PI Sta 10+27.719  
Δ = 36° 18' 21.6" (LT)  
L = 22.178  
T = 11.476  
R = 35.000  
SE = .03

PI Sta 10+74.284  
Δ = 18° 02' 22.0" (RT)  
L = 11.020  
T = 5.556  
R = 35.000  
SE = .03



MATCHLINE SEE SHEET UO-10

MATCHLINE SEE SHEET UO-12

03-05-2003 JUT  
R:\Utilities\U-2734\U0-11.dwg  
14:00:14  
U0-11.dwg  
14:00:14  
U0-11.dwg