

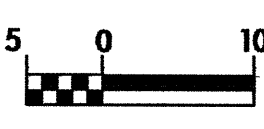


NOTE:
PLACE TEMPORARY ROCK SEDIMENT DAMS TYPE- B
AND TEMPORARY ROCK SILT CHECKS TYPE-A AT
DRAINAGE OUTLETS.

CLEARING AND GRUBBING
EROSION CONTROL FOR
CONSTRUCTION SHEET 7

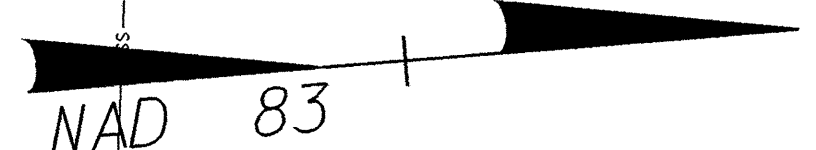
 ENVIRONMENTALLY SENSITIVE AREA
SEE PROJECT SPECIAL PROVISIONS

NOTE:
REMOVE EXISTING PAVEMENT UNDER
PROPOSED GRASS ISLANDS THRU-OUT PROJECT

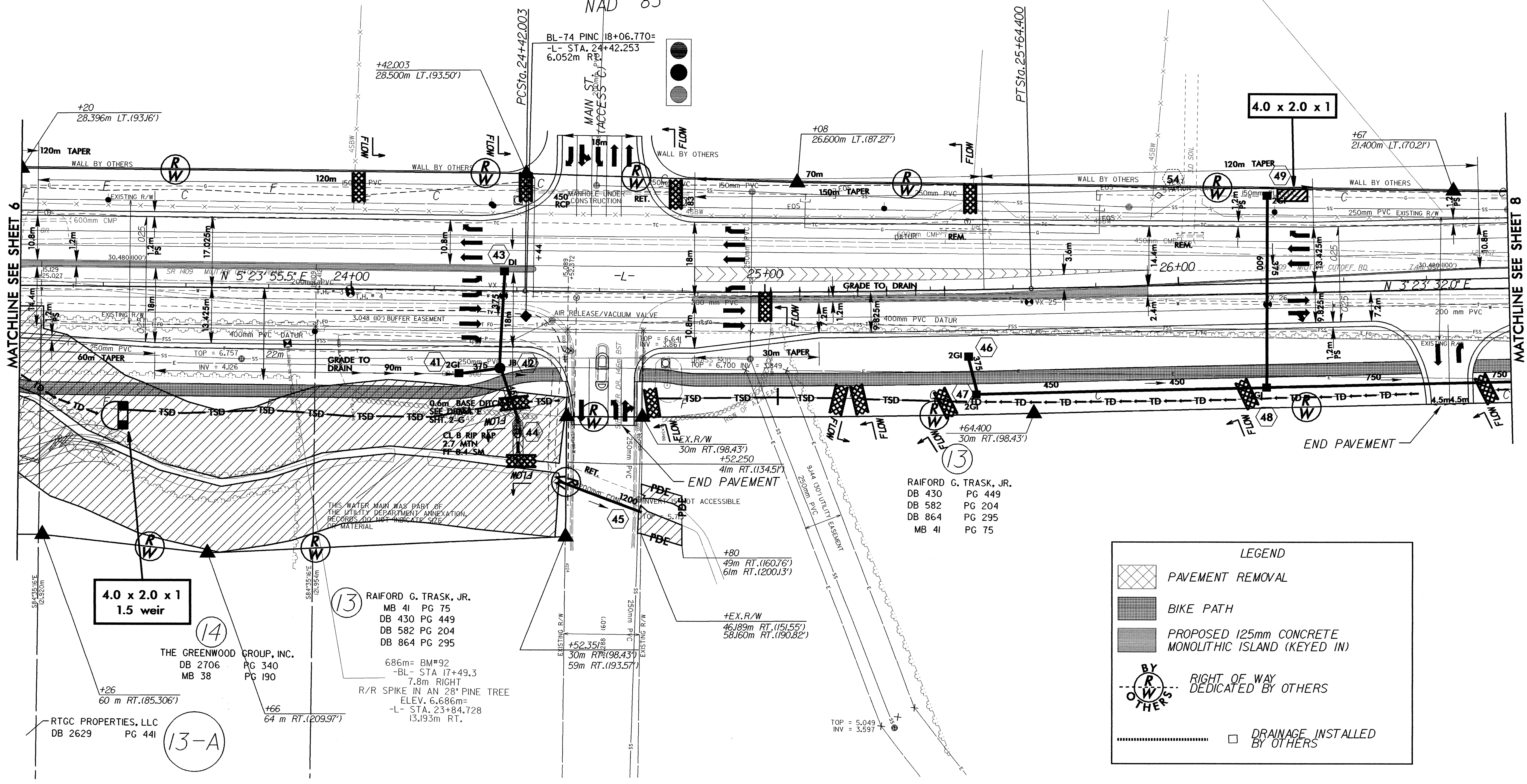
	PROJECT REFERENCE NO.	SHEET NO.
	U-2734	EC-6/CONST.7
	R/W SHEET NO.	7
	ROADWAY DESIGN ENGINEER	HYDRAULICS ENGINEER
CONST. REV.		
R/W REV.		

NOTE: SEE SHEET NO.18 FOR -L- PROFILE
SEE SHEETS NO.22 & 23 FOR -BIKE- PROFILE
SEE SHEET NO.2-H FOR NATURAL STREAM
DESIGN DETAILS & PROFILE
SEE DETAIL SHEET NO.2-K FOR -BIKEPATH- ALIGNMENT
SEE DETAIL SHEET NO.2-I FOR TEMPORARY
DETOUR FOR CULVERT CONSTRUCTION

-L-
PI Sta. 25+03.208
 $\Delta = 2^{\circ}00'23.5''$ (LT)
L = 122.397
T = 61.205
R = 3,495.000
SE = NC



(4A)
MAYFAIRE I, LLC
DB 3780 PG 209



RAIFORD G. TRASK, JR.
DB 430 PG 449
DB 582 PG 204
DB 864 PG 295
MB 41 PG 75

4.0 x 2.0 x 1
1.5 weir


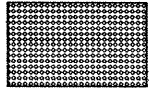

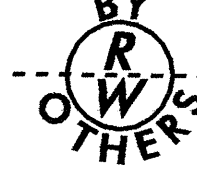

(14) THE GREENWOOD GROUP, INC.
DB 2706 PG 340
MB 38 PG 190

RTGC PROPERTIES, LLC
DB 2629 PG 441

(13) RAIFORD G. TRASK, JR.
MB 41 PG 75
DB 430 PG 449
DB 582 PG 204
DB 864 PG 295

686m = BM#92
-BL- STA 17+49.3
7.8m RIGHT
R/R SPIKE IN AN 28" PINE TREE
ELEV. 6.686m =
-L- STA. 23+84.728
13.193m RT.

LEGEND

	PAVEMENT REMOVAL
	BIKE PATH
	PROPOSED 125mm CONCRETE MONOLITHIC ISLAND (KEYED IN)
	RIGHT OF WAY DEDICATED BY OTHERS
	DRAINAGE INSTALLED BY OTHERS