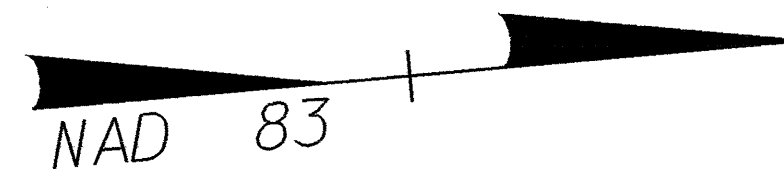


NOTE:  
PLACE TEMPORARY ROCK SEDIMENT DAMS TYPE-B  
AND TEMPORARY ROCK SILT CHECKS TYPE-A AT  
DRAINAGE OUTLETS.

CLEARING AND GRUBBING  
EROSION CONTROL FOR  
CONSTRUCTION SHEET 9

-L-	
PI Sta. 30+38.034	PI Sta. 35+26.422
$\Delta = 2^{\circ} 55' 51.5" (RT)$	$\Delta = 5^{\circ} 18' 10.7" (LT)$
L = 460.397	L = 323.478
T = 230.249	T = 161.854
R = 9,000.000	R = 3,495.000
SE = NC	SE = NC

4A  
MAYFAIRE I, LLC  
DB 3780 PG 209

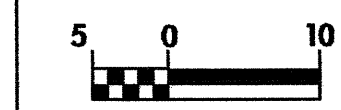


NOTE: SEE SHEET NO.19 FOR -L- PROFILE  
SEE SHEETS NO.23 & 24 FOR -BIKE- PROFILE  
SEE SHEET NO.25 FOR -Y3- & -Y4- PROFILES  
SEE DETAIL SHEET 2L & 2M FOR -BIKEPATH-  
ALIGNMENT  
SEE SHEET 2-N FOR INTERSECTION DETAIL OF -Y3-  
SEE SHEET 2-W FOR 600mm SLOPED CURB DETAIL.  
SEE SHEET 2-V FOR TEMPORARY DETOUR  
FOR GULVERT CONSTRUCTION

LEGEND

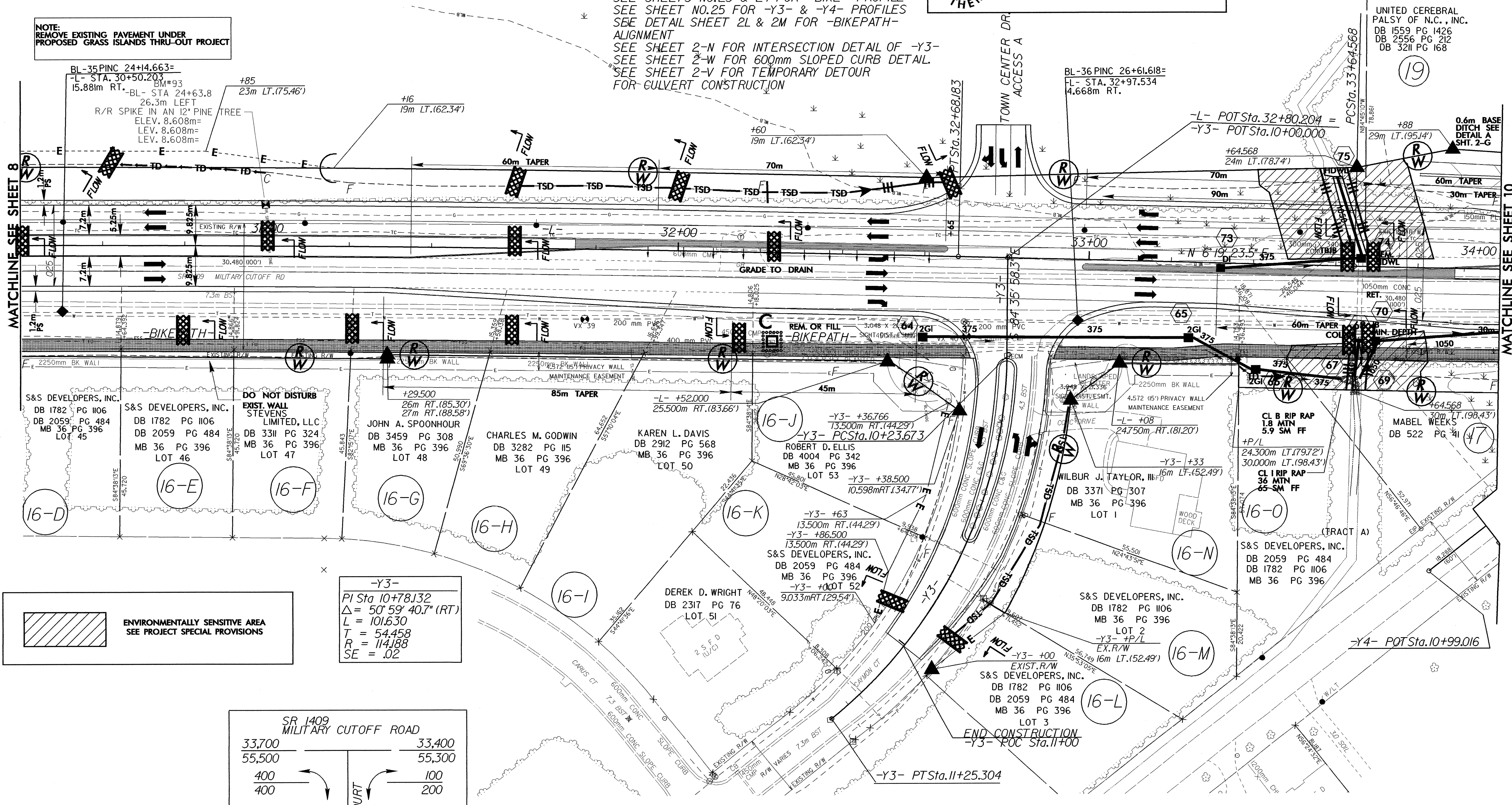
- PAVEMENT REMOVAL
- BIKE PATH
- PROPOSED 125mm CONCRETE MONOLITHIC ISLAND (KEYED IN)
- RIGHT OF WAY DEDICATED BY OTHERS

PROJECT REFERENCE NO. U-2734	SHEET NO. EC-9/CONST.9
R/W SHEET NO. 9	
ROADWAY DESIGN ENGINEER	HYDRAULICS ENGINEER
CONST. REV.	
R/W REV.	



NOTE:  
REMOVE EXISTING PAVEMENT UNDER  
PROPOSED GRASS ISLANDS THRU-OUT PROJECT

UNITED CEREBRAL  
PALSY OF N.C., INC.  
DB 1559 PG 1426  
DB 2556 PG 212  
DB 3211 PG 168



MATCHLINE SEE SHEET 8

MATCHLINE SEE SHEET 10

S&S DEVELOPERS, INC.  
DB 1782 PG 1106  
DB 2059 PG 484  
MB 36 PG 396  
LOT 45

S&S DEVELOPERS, INC.  
DB 1782 PG 1106  
DB 2059 PG 484  
MB 36 PG 396  
LOT 46

DO NOT DISTURB  
EXIST. WALL  
STEVENS  
LIMITED, LLC  
DB 3311 PG 324  
MB 36 PG 396  
LOT 47

JOHN A. SPOONHOUR  
DB 3459 PG 308  
MB 36 PG 396  
LOT 48

CHARLES M. GODWIN  
DB 3282 PG 115  
MB 36 PG 396  
LOT 49

KAREN L. DAVIS  
DB 2912 PG 568  
MB 36 PG 396  
LOT 50

DEREK D. WRIGHT  
DB 2317 PG 76  
LOT 51

ROBERT D. ELLIS  
DB 4004 PG 342  
MB 36 PG 396  
LOT 53

WILBUR J. TAYLOR, III  
DB 3371 PG 307  
MB 36 PG 396  
LOT 1

S&S DEVELOPERS, INC.  
DB 1782 PG 1106  
DB 2059 PG 484  
MB 36 PG 396  
LOT 2

S&S DEVELOPERS, INC.  
DB 1782 PG 1106  
DB 2059 PG 484  
MB 36 PG 396  
LOT 3

S&S DEVELOPERS, INC.  
DB 1782 PG 1106  
DB 2059 PG 484  
MB 36 PG 396

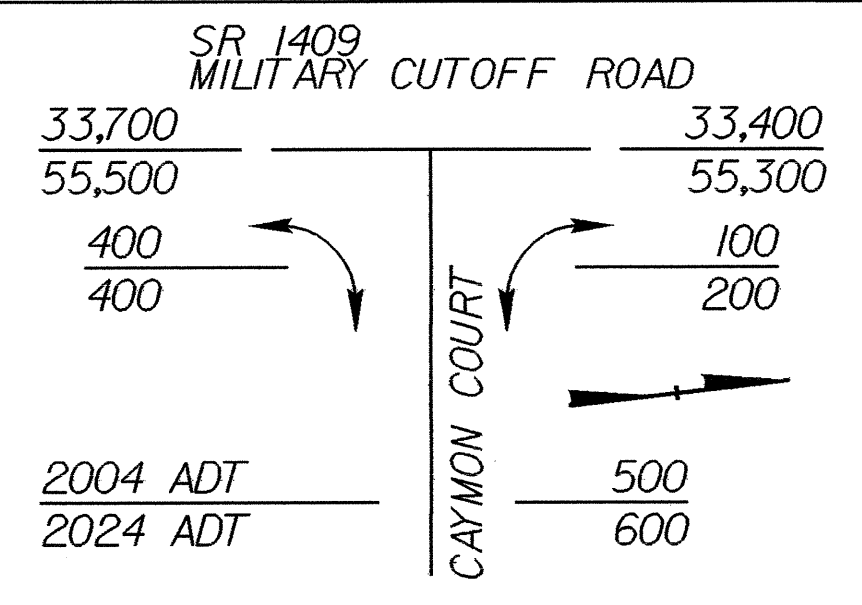
MABEL WEEKS  
DB 522 PG 41

S&S DEVELOPERS, INC.  
DB 1782 PG 1106  
DB 2059 PG 484  
DB 1782 PG 1106  
MB 36 PG 396

S&S DEVELOPERS, INC.  
DB 1782 PG 1106  
DB 2059 PG 484  
MB 36 PG 396

ENVIRONMENTALLY SENSITIVE AREA  
SEE PROJECT SPECIAL PROVISIONS

-Y3-	
PI Sta 10+78.132	$\Delta = 50^{\circ} 59' 40.7" (RT)$
L = 101.630	T = 54.458
R = 114.188	SE = .02



END CONSTRUCTION  
-Y3- POT Sta. 11+700