

5 0 10

CONST. REV.

R/W REV.

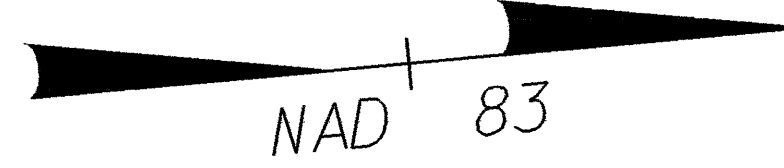
PROJECT REFERENCE NO.	SHEET NO.
U-2734	EC-10/CONST.10
R/W SHEET NO.	10
ROADWAY DESIGN ENGINEER	HYDRAULICS ENGINEER

NOTE: PLACE TEMPORARY ROCK SEDIMENT DAMS TYPE-B AND TEMPORARY ROCK SILT CHECKS TYPE-A AT DRAINAGE OUTLETS.

BRODY ZIMMER, LLC  
DB 2891 PG 422

-L-  
PI Sta 35+26.422  
 $\Delta = 5' 18" 10.7' (LT)$   
L = 323.478  
T = 161.854  
R = 3,495.000  
SE = NC

NOTE: SEE SHEETS NO.19 & 20 FOR -L- PROFILE  
SEE SHEET NO.24 FOR -BIKE- PROFILE  
SEE SHEET NO.25 FOR -Y4- PROFILE  
SEE DETAIL SHEET 2-M FOR -BIKEPATH- ALIGNMENT  
SEE SHEET 2-N FOR INTERSECTION DETAIL OF -Y4-



CLEARING AND GRUBBING  
EROSION CONTROL FOR  
CONSTRUCTION SHEET 10

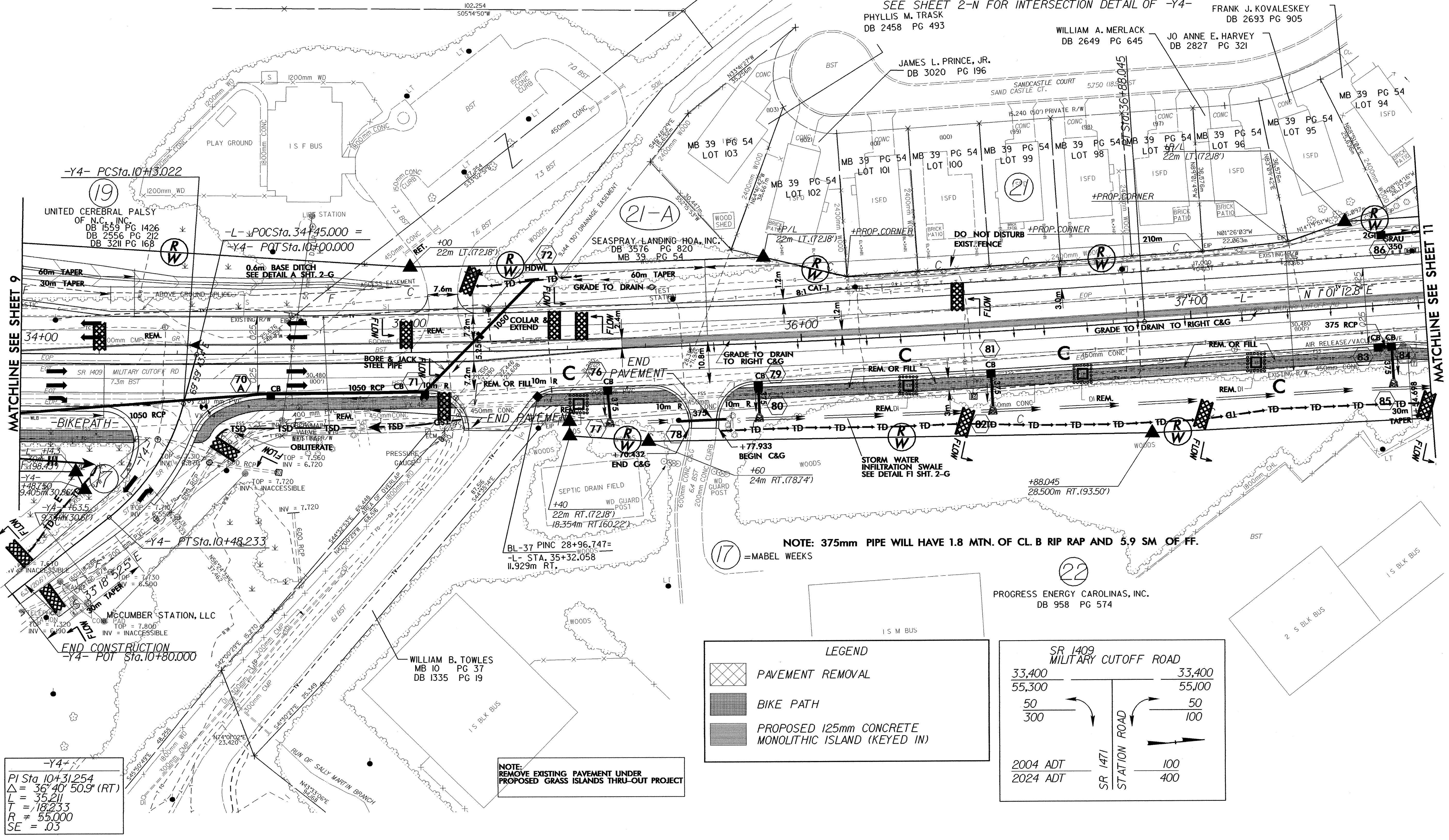
FRANK J. KOVALESKEY  
DB 2693 PG 905

WILLIAM A. MERLACK  
DB 2649 PG 645

JO ANNE E. HARVEY  
DB 2827 PG 321

JAMES L. PRINCE, JR.  
DB 3020 PG 196

PHYLLIS M. TRASK  
DB 2458 PG 493



MATCHLINE SEE SHEET 9

MATCHLINE SEE SHEET 11

-Y4-  
PI Sta 10+31.254  
 $\Delta = 36' 40" 50.9' (RT)$   
L = 35.211  
T = 18.233  
R = 55.000  
SE = .03

NOTE: REMOVE EXISTING PAVEMENT UNDER PROPOSED GRASS ISLANDS THRU-OUT PROJECT

NOTE: 375mm PIPE WILL HAVE 1.8 MTN. OF CL. B RIP RAP AND 5.9 SM. OF FF.  
=MABEL WEEKS

LEGEND

- PAVEMENT REMOVAL
- BIKE PATH
- PROPOSED 125mm CONCRETE MONOLITHIC ISLAND (KEYED IN)

SR 1409  
MILITARY CUTOFF ROAD

33,400	33,400
55,300	55,100
50	50
300	100
2004 ADT	100
2024 ADT	400

SR 1471  
STATION ROAD