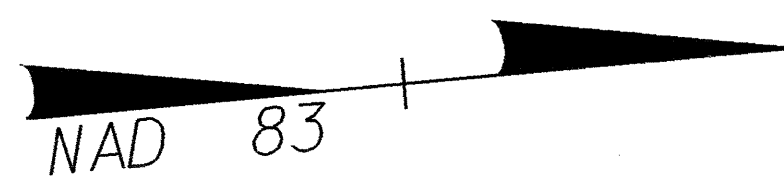


	PROJECT REFERENCE NO.	SHEET NO.
	U-2734	EC-II/CONST. II
	R/W SHEET NO.	II
	ROADWAY DESIGN ENGINEER	HYDRAULICS ENGINEER
CONST. REV.		
R/W REV.		

**NOTE:**  
PLACE TEMPORARY ROCK SEDIMENT DAMS TYPE-B AND TEMPORARY ROCK SILT CHECKS TYPE-A AT DRAINAGE OUTLETS.

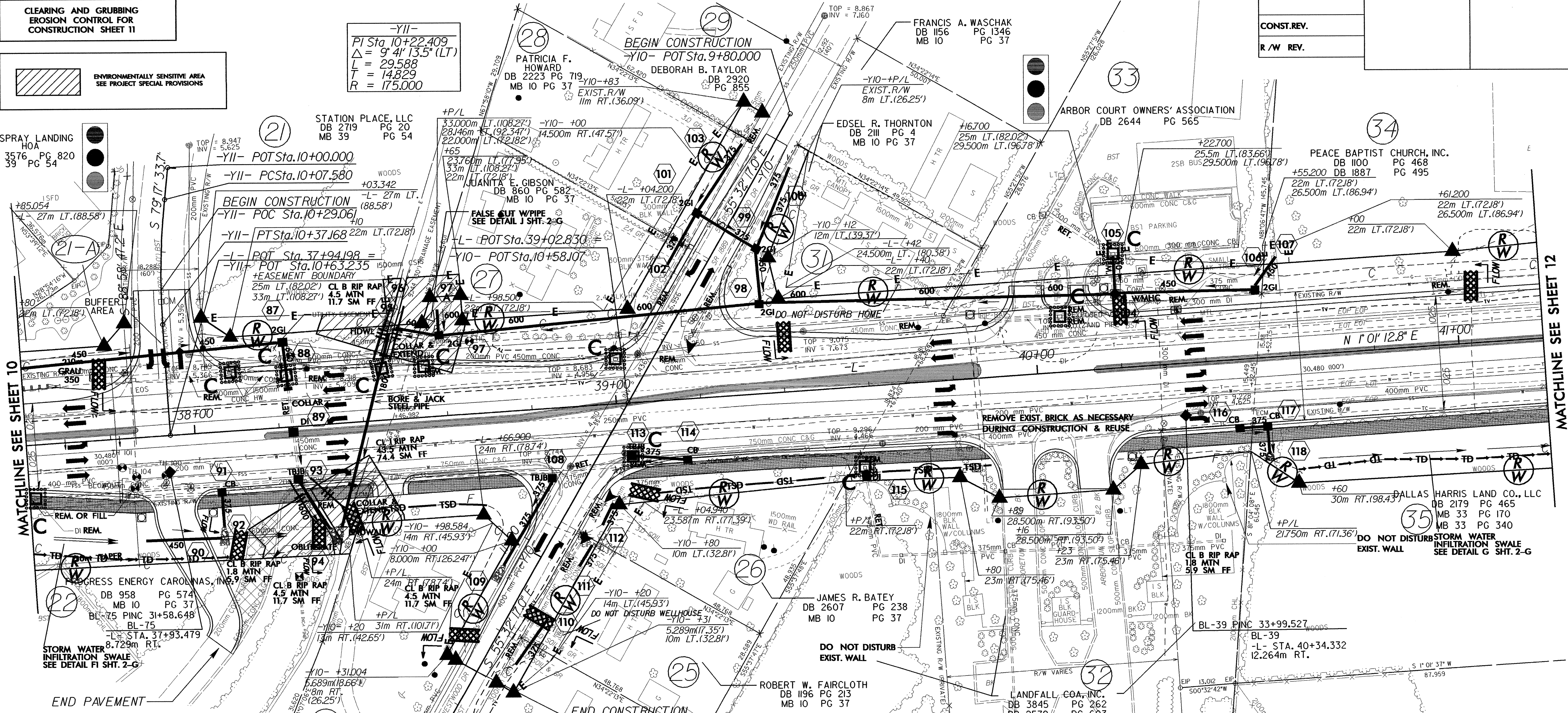
**CLEARING AND GRUBBING EROSION CONTROL FOR CONSTRUCTION SHEET II**

ENVIRONMENTALLY SENSITIVE AREA SEE PROJECT SPECIAL PROVISIONS



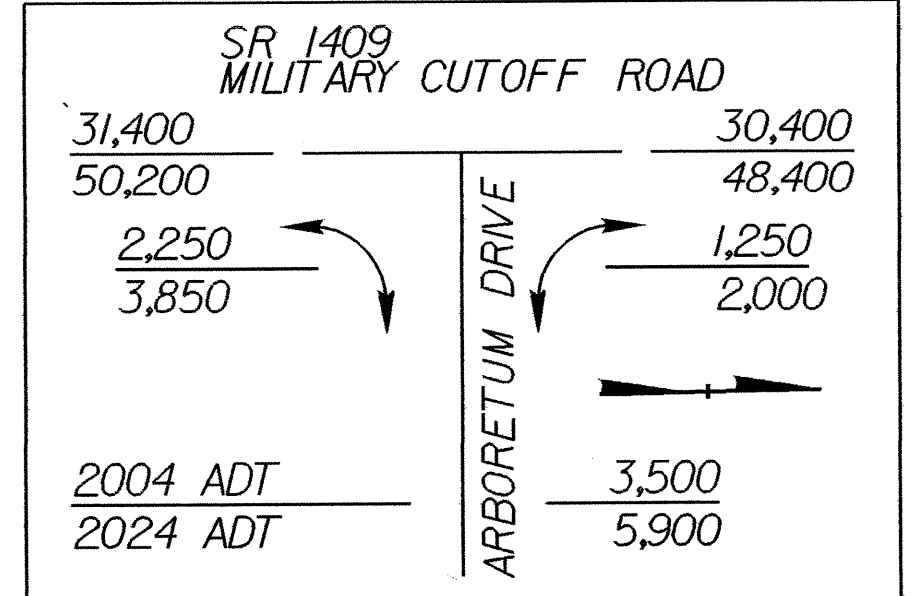
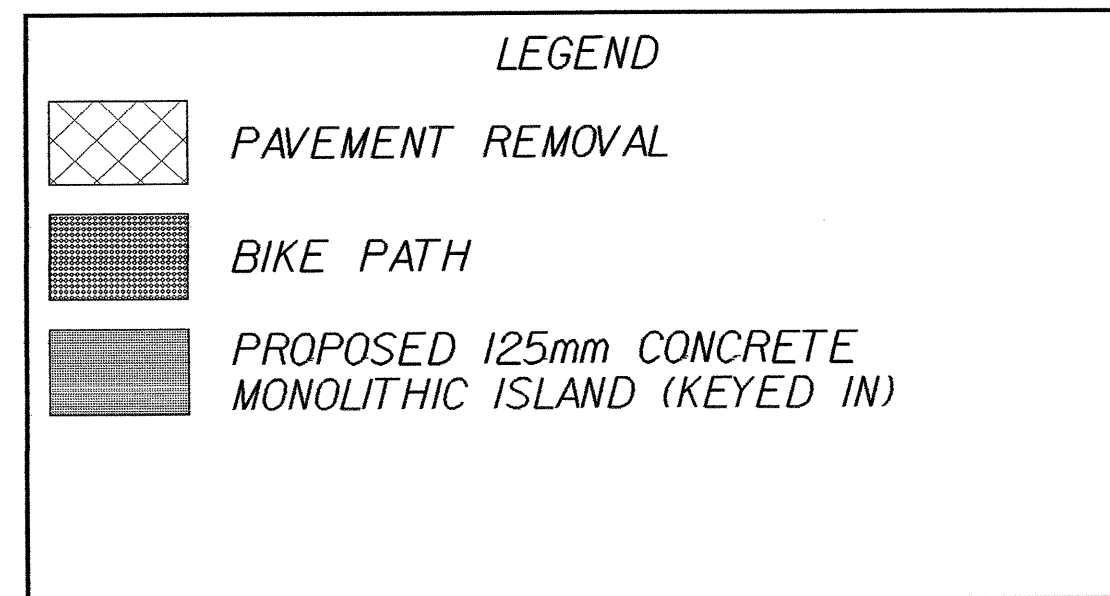
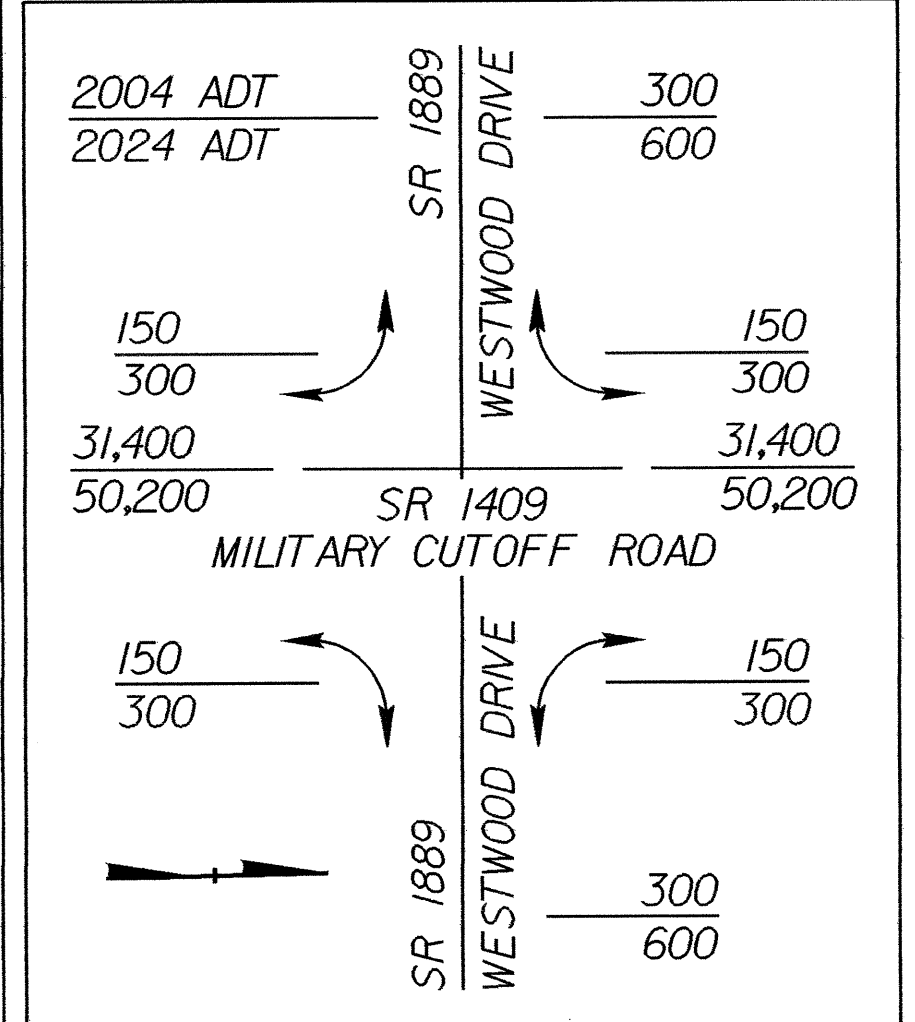
-Y11-  
PI Sta. 10+22.409  
Δ = 9' 4" 13.5" (LT)  
L = 29,588  
T = 14,829  
R = 175,000

SEASPRAY LANDING HOA  
DB 3576 PG 820  
MB 39 PG 54



MATCHLINE SEE SHEET 10

MATCHLINE SEE SHEET 12



**NOTE:**  
REMOVE EXISTING PAVEMENT UNDER PROPOSED GRASS ISLANDS THRU-OUT PROJECT

**NOTE:**  
SEE SHEET NO. 20 FOR -L- PROFILE  
SEE SHEET NO. 25 FOR -Y10- PROFILE  
SEE SHEET 2-0 FOR INTERSECTION DETAIL OF -Y10- & -Y11-