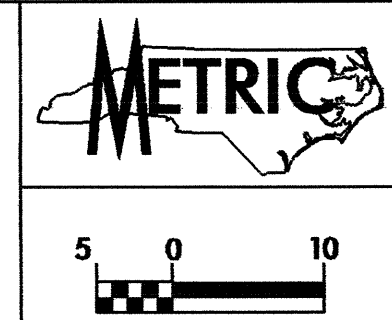


PROJECT REFERENCE NO.	SHEET NO.
U-2734	EC-13/CONST.13
R/W SHEET NO.	13
ROADWAY DESIGN ENGINEER	HYDRAULICS ENGINEER
CONST.REV.	
R/W REV.	

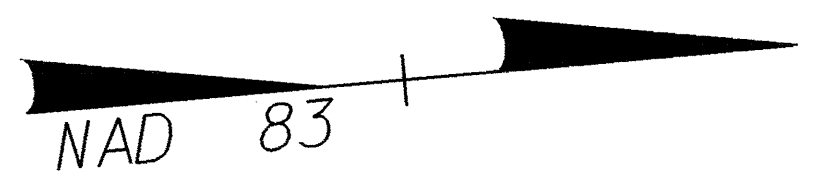


NOTE:
PLACE TEMPORARY ROCK SEDIMENT DAMS TYPE-B AND TEMPORARY ROCK SILT CHECKS TYPE-A AT DRAINAGE OUTLETS.

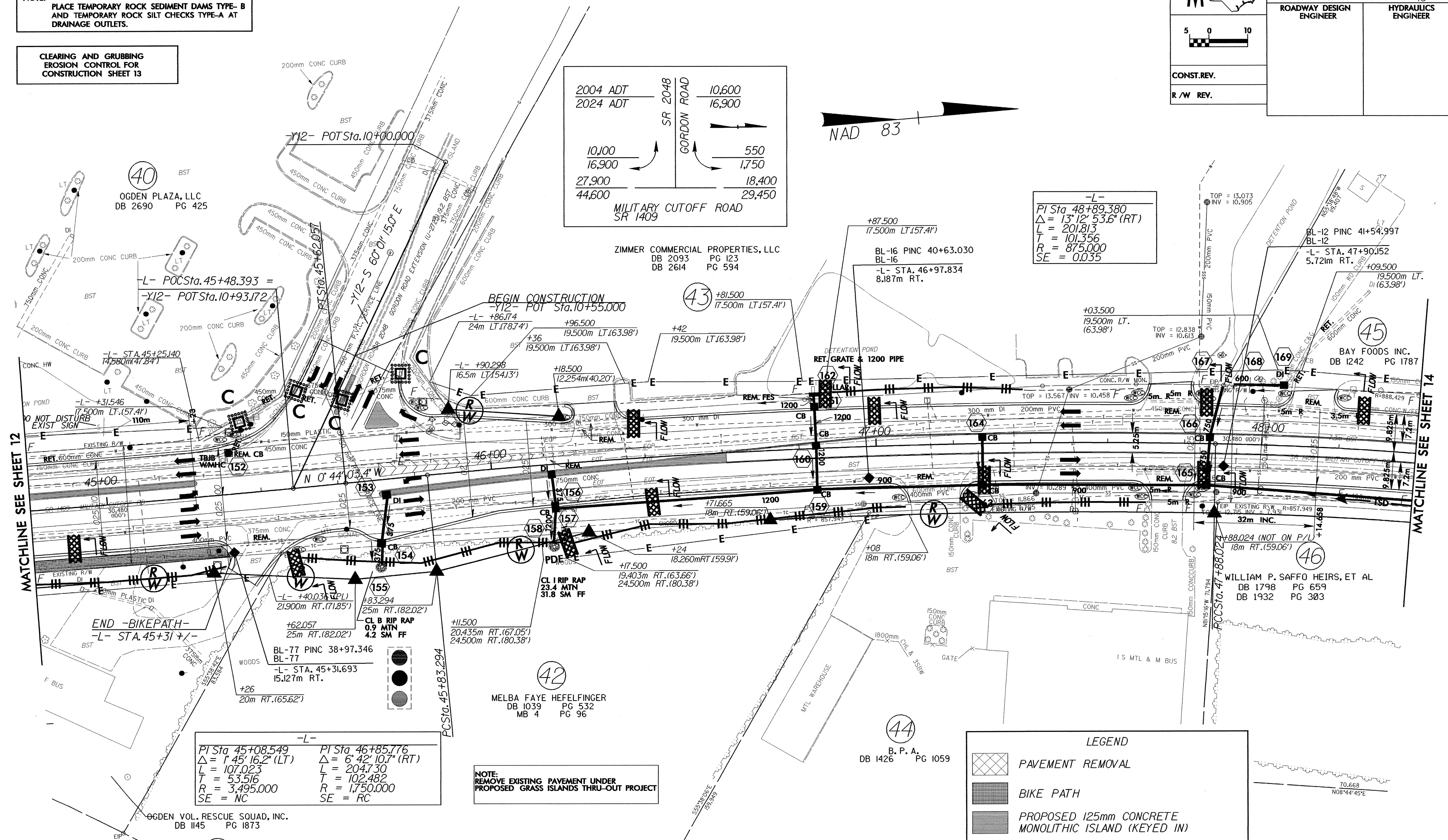
CLEARING AND GRUBBING
EROSION CONTROL FOR
CONSTRUCTION SHEET 13

2004 ADT	SR 2048	10,600
2024 ADT	GORDON ROAD	16,900
10,100		550
16,900		1,750
27,900		18,400
44,600		29,450

MILITARY CUTOFF ROAD
SR 1409



-L-
PI Sta 48+89.380
 $\Delta = 13' 12'' 53.6''$ (RT)
L = 201.813
T = 101.356
R = 875.000
SE = 0.035



-L-	-L-
PI Sta 45+08.549	PI Sta. 46+85.776
$\Delta = 1' 45'' 16.2''$ (LT)	$\Delta = 6' 42'' 10.7''$ (RT)
L = 107.023	L = 204.730
T = 53.516	T = 102.482
R = 3,495.000	R = 1,750.000
SE = NC	SE = RC

NOTE:
REMOVE EXISTING PAVEMENT UNDER
PROPOSED GRASS ISLANDS THRU-OUT PROJECT

LEGEND

	PAVEMENT REMOVAL
	BIKE PATH
	PROPOSED 125mm CONCRETE MONOLITHIC ISLAND (KEYED IN)

NOTE: SEE SHEET NO.21 FOR -L- PROFILE
SEE SHEET NO.26 FOR -Y12- PROFILE
SEE SHEET NO.2-Q FOR INTERSECTION DETAIL OF -Y12-

MATCHLINE SEE SHEET 12

MATCHLINE SEE SHEET 14