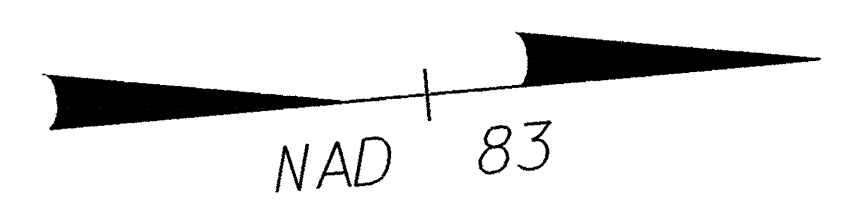
	PROJECT REFERENCE NO.	SHEET NO.
	U-2734	EC-18/CONST.5
	R/W SHEET NO.	5
	ROADWAY DESIGN ENGINEER	HYDRAULICS ENGINEER
CONST. REV.		
R/W REV.		

NOTE: SEE SHEET NO.17 FOR -L- PROFILE
 SEE SHEET NO.22 FOR -BIKEPATH- PROFILE
 SEE SHEET NO.2-1 FOR -BIKEPATH- ALIGNMENT

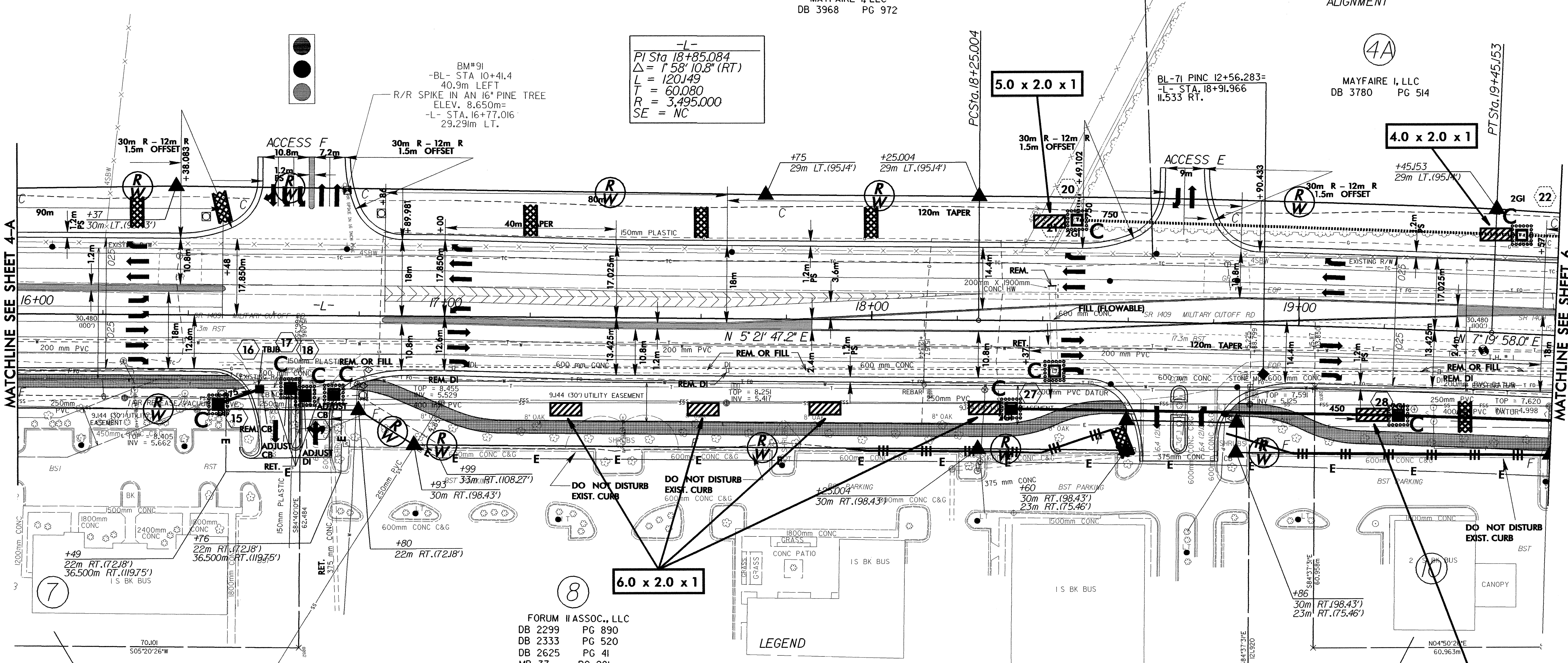


MAYFAIRE I, LLC
 DB 3968 PG 972

MAYFAIRE I, LLC
 DB 3780 PG 514

-L-
 PI Sta 18+85.084
 $\Delta = 158'10.8" (RT)$
 $L = 120.149$
 $T = 60.080$
 $R = 3,495.000$
 $SE = NC$

BM*91
 -BL- STA 10+41.4
 40.9m LEFT
 ELEV. 8.650m
 -L- STA. 16+77.016
 29.291m LT.



MATCHLINE SEE SHEET 4-A

MATCHLINE SEE SHEET 6


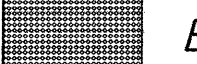



FORUM I ASSOC., LLC
 DB 1887 PG 28
 MB 33 PG 291
 MB 34 PG 354

FORUM II ASSOC., LLC
 DB 2299 PG 890
 DB 2333 PG 520
 DB 2625 PG 41
 MB 37 PG 281
 MB 37 PG 352

SWAIN PROPERTIES
 (BNK OF WILMINGTON), LLC
 DB 2824 PG 576
 MB 37 PG 281

FORUM II ASSOC., LLC
 PG 890 MB 37 PG 281
 DB 2333 PG 520 MB 37 PG 352
 DB 2625 PG 41

LEGEND

-  PAVEMENT REMOVAL
-  BIKE PATH
-  PROPOSED 125mm CONCRETE MONOLITHIC ISLAND (KEYED IN)
-  RIGHT OF WAY DEDICATED BY OTHERS
-  DRAINAGE INSTALLED BY OTHERS

NOTE: REMOVE EXISTING PAVEMENT UNDER PROPOSED GRASS ISLANDS THRU-OUT PROJECT