

| | |
|-------------------------|---------------------|
| PROJECT REFERENCE NO. | SHEET NO. |
| U-2734 | EC-22/CONST. 8 |
| R/W SHEET NO. | 8 |
| ROADWAY DESIGN ENGINEER | HYDRAULICS ENGINEER |
| | |
| CONST. REV. | |
| R/W REV. | |

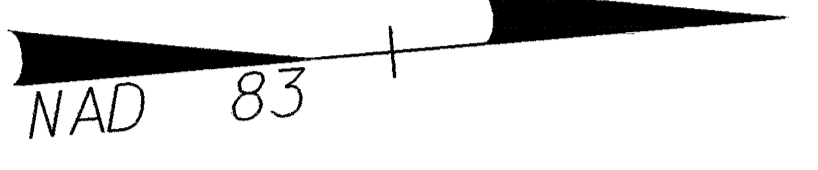
LEGEND

- PAVEMENT REMOVAL
- BIKE PATH
- PROPOSED 125mm CONCRETE MONOLITHIC ISLAND (KEYED IN)
- RIGHT OF WAY DEDICATED BY OTHERS

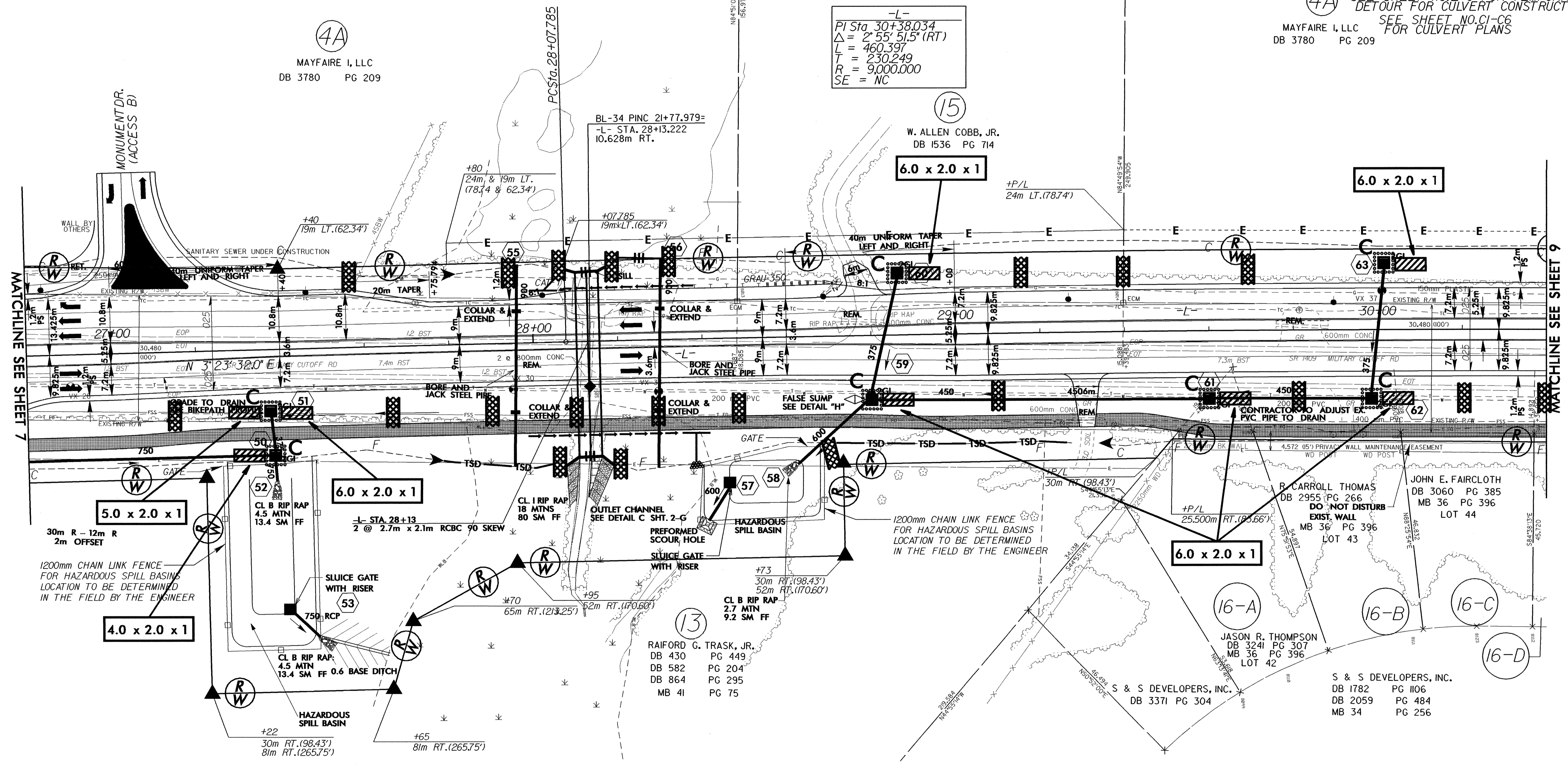
NOTE: SEE SHEETS NO.18 & 19 FOR -L- PROFILE
 SEE SHEET NO.23 FOR -BIKE- PROFILE
 SEE SHEET NO.2-K AND 2-L FOR -BIKE- ALIGNMENT
 SEE SHEET NO.2-S FOR HAZARDOUS SPILL RETENTION BASIN
 (4A) SEE SHEET NO.2-U FOR TEMPORARY DETOUR FOR CULVERT CONSTRUCTION
 SEE SHEET NO.C1-C6 FOR CULVERT PLANS

MAYFAIRE I, LLC
 DB 3780 PG 209

NOTE: REMOVE EXISTING PAVEMENT UNDER PROPOSED GRASS ISLANDS THRU-OUT PROJECT



-L-
 PI Sta. 30+38.034
 $\Delta = 2^\circ 55' 51.5''$ (RT)
 L = 460.397
 T = 230.249
 R = 9,000.000
 SE = NC



(4A)
 MAYFAIRE I, LLC
 DB 3780 PG 209

(15)
 W. ALLEN COBB, JR.
 DB 1536 PG 714

BL-34 PINC 21+77.979=
 -L- STA. 28+13.222
 10.628m RT.

(16-A)
 JASON R. THOMPSON
 DB 3241 PG 307
 MB 36 PG 396
 LOT 42

(16-B)
 R. CARROLL THOMAS
 DB 2955 PG 266
 DO NOT DISTURB
 EXIST. WALL
 MB 36 PG 396
 LOT 43

(16-C)
 JOHN E. FAIRCLOTH
 DB 3060 PG 385
 MB 36 PG 396
 LOT 44

(13)
 RAIFORD G. TRASK, JR.
 DB 430 PG 449
 DB 582 PG 204
 DB 864 PG 295
 MB 41 PG 75

(16-D)
 S & S DEVELOPERS, INC.
 DB 1782 PG 1106
 DB 2059 PG 484
 MB 34 PG 256

1200mm CHAIN LINK FENCE FOR HAZARDOUS SPILL BASINS LOCATION TO BE DETERMINED IN THE FIELD BY THE ENGINEER

1200mm CHAIN LINK FENCE FOR HAZARDOUS SPILL BASINS LOCATION TO BE DETERMINED IN THE FIELD BY THE ENGINEER