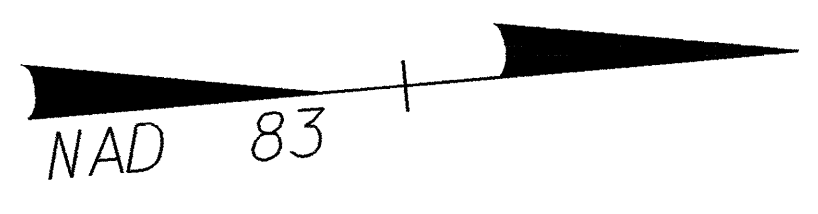


LEGEND

- PAVEMENT REMOVAL
- BIKE PATH
- PROPOSED 125mm CONCRETE MONOLITHIC ISLAND (KEYED IN)
- BY OTHERS RIGHT OF WAY DEDICATED BY OTHERS

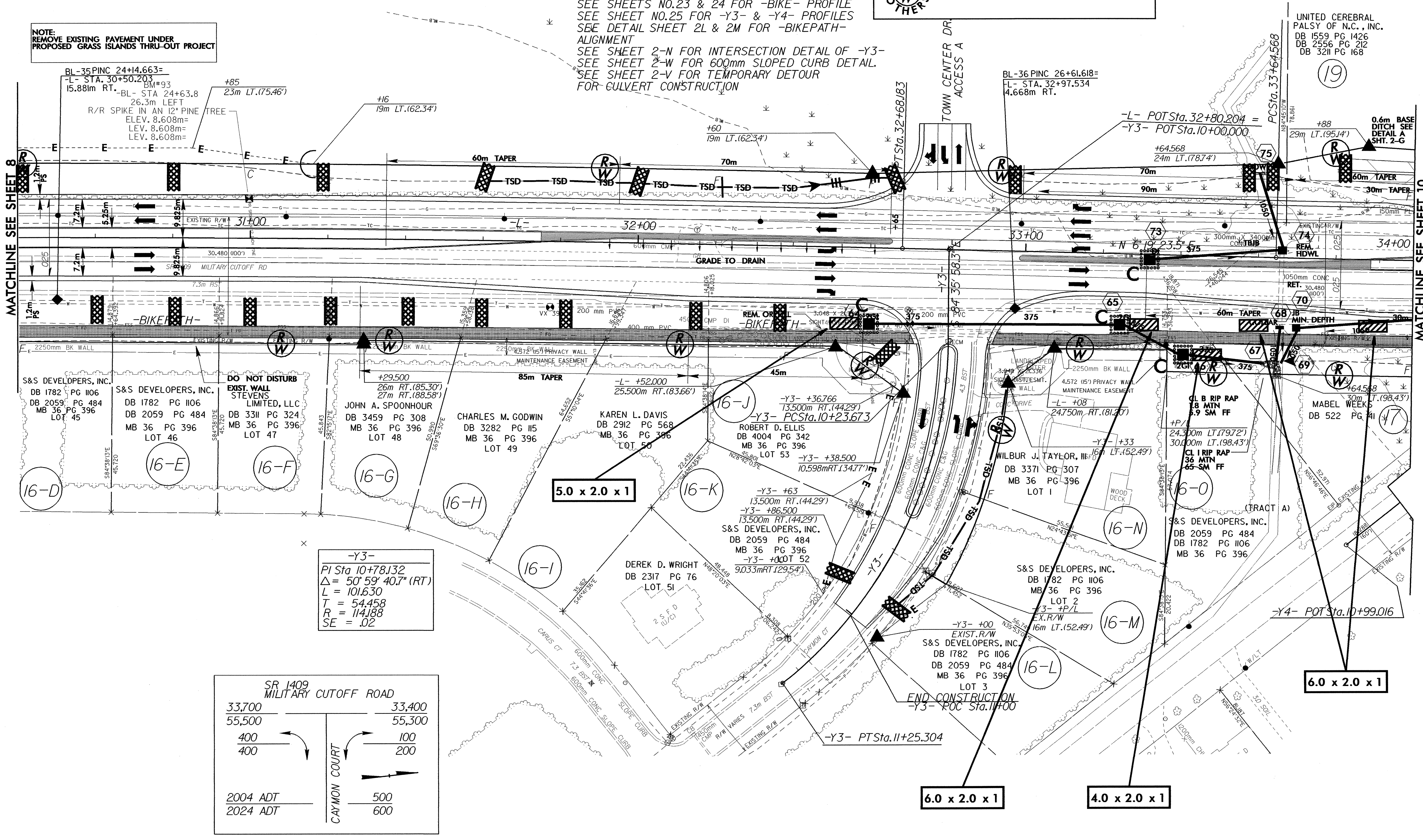
-L-
 PI Sta 30+38.034 PI Sta 35+26.422
 $\Delta = 2^{\circ}55'51.5''$ (RT) $\Delta = 5^{\circ}18'10.7''$ (LT)
 L = 460.397 L = 323.478
 T = 230.249 T = 161.854
 R = 9,000.000 R = 3,495.000
 SE = NC SE = NC

MAYFAIRE I, LLC
 DB 3780 PG 209



NOTE: SEE SHEET NO.19 FOR -L- PROFILE
 SEE SHEETS NO.23 & 24 FOR -BIKE- PROFILE
 SEE SHEET NO.25 FOR -Y3- & -Y4- PROFILES
 SEE DETAIL SHEET 2L & 2M FOR -BIKEPATH- ALIGNMENT
 SEE SHEET 2-N FOR INTERSECTION DETAIL OF -Y3-
 SEE SHEET 2-W FOR 600mm SLOPED CURB DETAIL.
 SEE SHEET 2-V FOR TEMPORARY DETOUR FOR GULVERT CONSTRUCTION

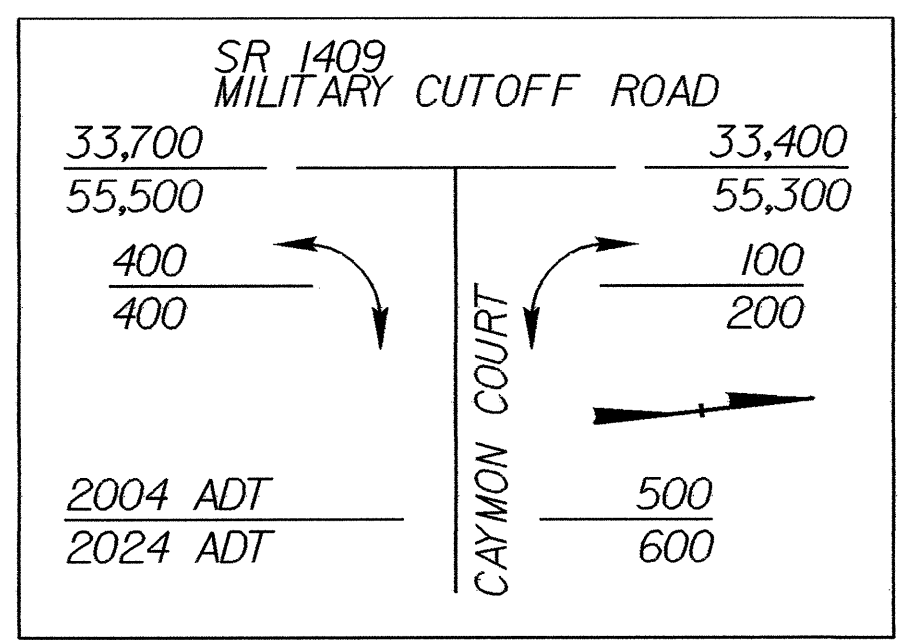
NOTE: REMOVE EXISTING PAVEMENT UNDER PROPOSED GRASS ISLANDS THRU-OUT PROJECT



MATCHLINE SEE SHEET 8

MATCHLINE SEE SHEET 10

-Y3-
 PI Sta 10+78.132
 $\Delta = 50^{\circ}59'40.7''$ (RT)
 L = 101.630
 T = 54.458
 R = 114.188
 SE = .02



UNITED CEREBRAL PALSY OF N.C., INC.
 DB 1559 PG 1426
 DB 2556 PG 212
 DB 3211 PG 168

(19)

MABEL WEEKS
 DB 522 PG 41

6.0 x 2.0 x 1

6.0 x 2.0 x 1

4.0 x 2.0 x 1