

5 0 10

CONST. REV.

R/W REV.

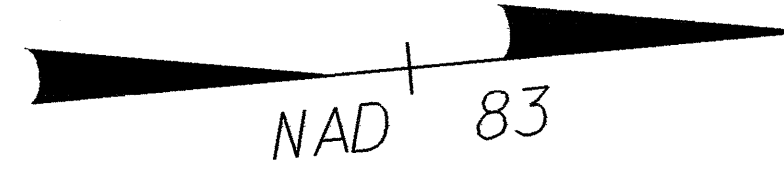
PROJECT REFERENCE NO.	SHEET NO.
U-2734	EC-24/CONST.10
R/W SHEET NO.	10
ROADWAY DESIGN ENGINEER	HYDRAULICS ENGINEER

BRODY ZIMMER, LLC
DB 2891 PG 422

(4A)

-L-
PI Sta. 35+26.422
 $\Delta = 5^{\circ}18'10.7''$ (LT)
L = 323.478
T = 161.854
R = 3,495.000
SE = NC

NOTE: SEE SHEETS NO.19 & 20 FOR -L- PROFILE
SEE SHEET NO.24 FOR -BIKE- PROFILE
SEE SHEET NO.25 FOR -Y4- PROFILE
SEE DETAIL SHEET 2-M FOR -BIKEPATH- ALIGNMENT
SEE SHEET 2-N FOR INTERSECTION DETAIL OF -Y4-



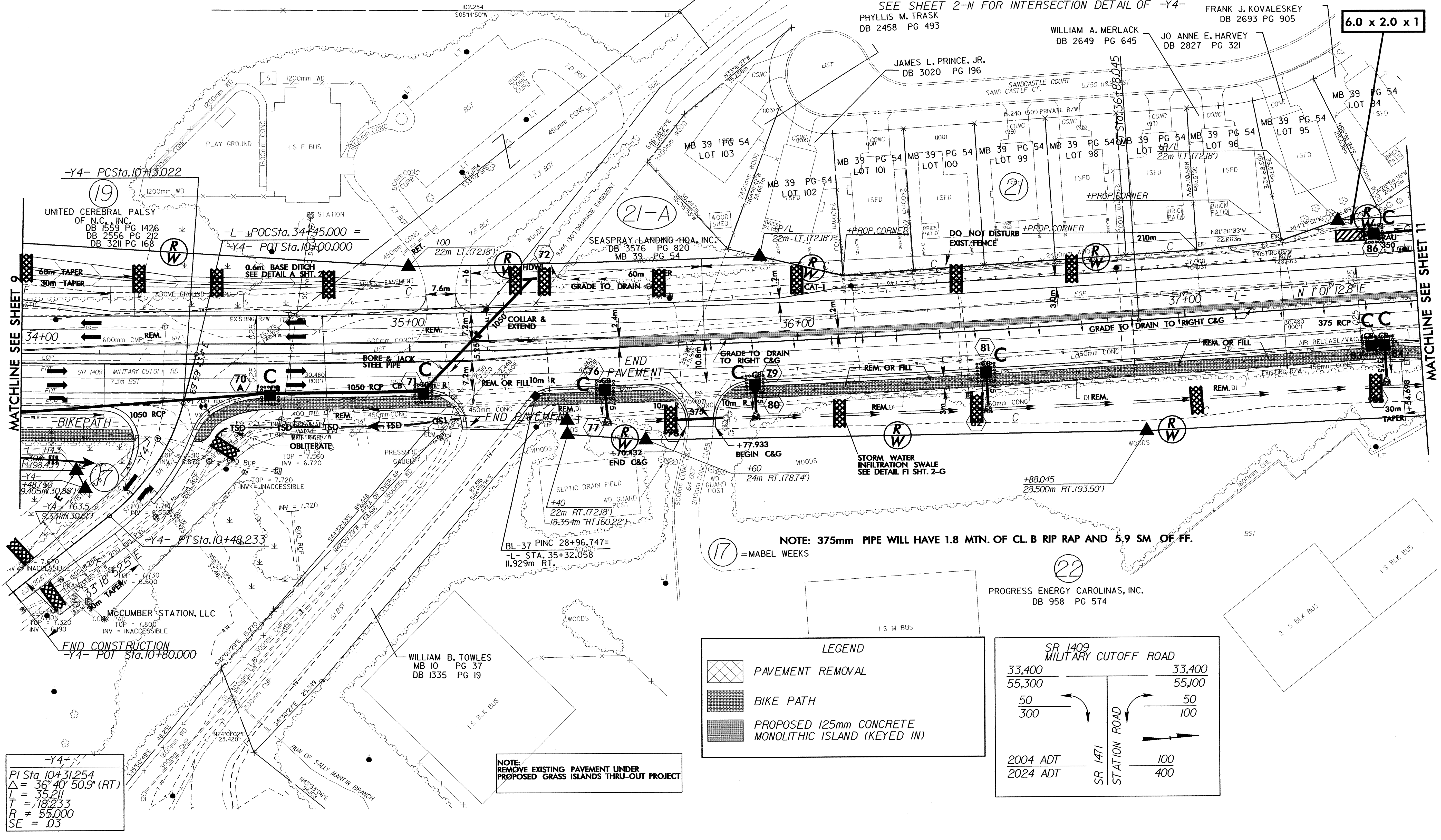
FRANK J. KOVALESKEY
DB 2693 PG 905

6.0 x 2.0 x 1

WILLIAM A. MERLACK
DB 2649 PG 645

JO ANNE E. HARVEY
DB 2827 PG 321

JAMES L. PRINCE, JR.
DB 3020 PG 196



-Y4- PCSta.10+30.022

(19)
UNITED CEREBRAL PALSY
OF N.C. INC.
DB 1559 PG 1426
DB 2556 PG 212
DB 3211 PG 168

-L- PCSta.34+45.000 =
-Y4- POTSta.10+00.000

(21-A)

SEASPRAY LANDING HOA, INC.
DB 3576 PG 820
MB 39 PG 54

DO NOT DISTURB
EXIST. FENCE

MB 39 PG 54
LOT 94

MB 39 PG 54
LOT 95

MB 39 PG 54
LOT 96

MB 39 PG 54
LOT 97

MB 39 PG 54
LOT 98

MB 39 PG 54
LOT 99

MB 39 PG 54
LOT 100

MB 39 PG 54
LOT 101

MB 39 PG 54
LOT 102

MB 39 PG 54
LOT 103

MB 39 PG 54
LOT 104

MB 39 PG 54
LOT 105

MB 39 PG 54
LOT 106

MB 39 PG 54
LOT 107

MB 39 PG 54
LOT 108

MB 39 PG 54
LOT 109

MB 39 PG 54
LOT 110

MB 39 PG 54
LOT 111

MB 39 PG 54
LOT 112

MATCHLINE SEE SHEET 9

MATCHLINE SEE SHEET 11

NOTE: 375mm PIPE WILL HAVE 1.8 MTN. OF CL. B RIP RAP AND 5.9 SM OF FF.
=MABEL WEEKS

PROGRESS ENERGY CAROLINAS, INC.
DB 958 PG 574

WILLIAM B. TOWLES
MB 10 PG 37
DB 1335 PG 19

-Y4-
PI Sta. 10+31.254
 $\Delta = 36^{\circ}40'50.9''$ (RT)
L = 35.211
T = 18.233
R = 55.000
SE = .03

NOTE:
REMOVE EXISTING PAVEMENT UNDER
PROPOSED GRASS ISLANDS THRU-OUT PROJECT

LEGEND

- PAVEMENT REMOVAL
- BIKE PATH
- PROPOSED 125mm CONCRETE MONOLITHIC ISLAND (KEYED IN)

