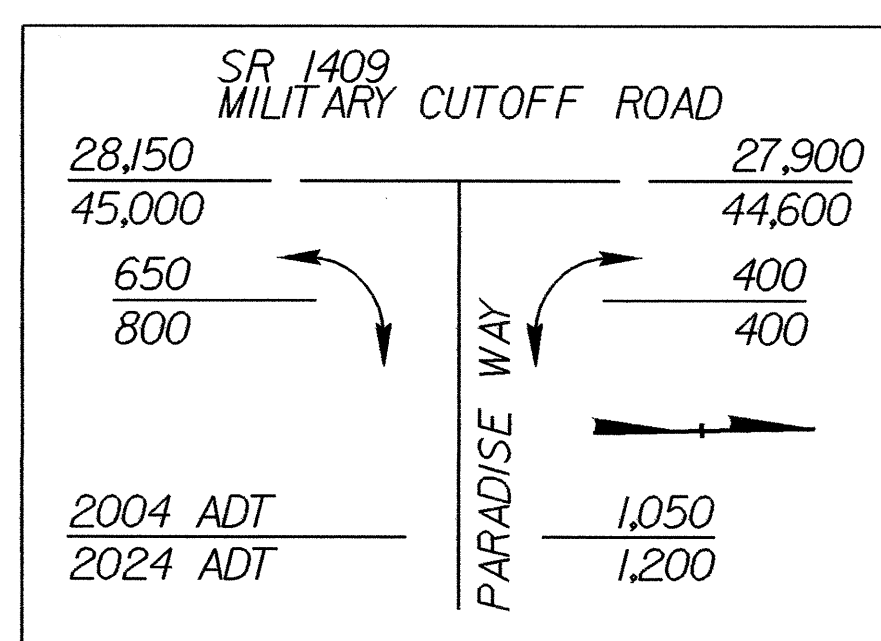
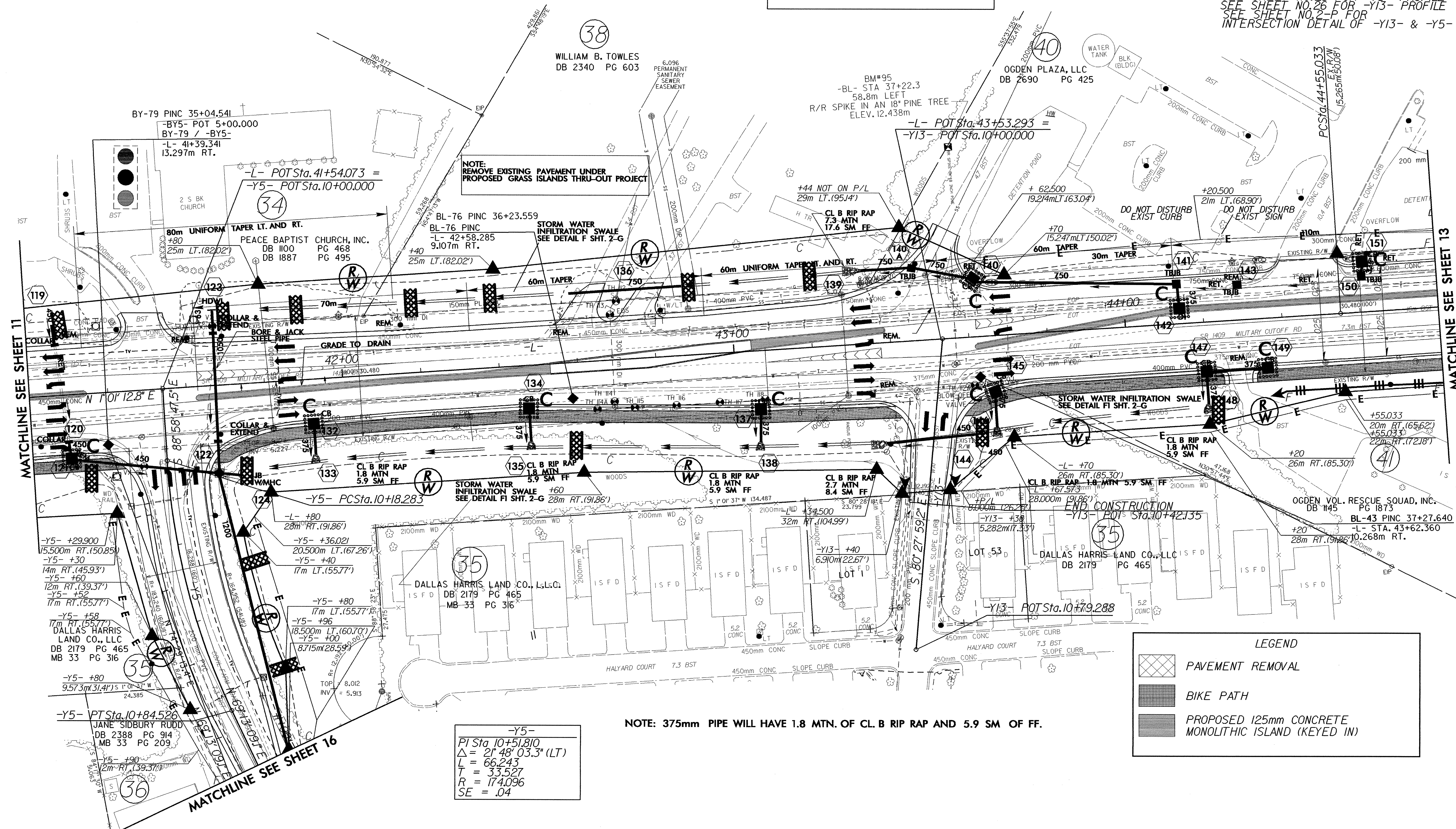
	PROJECT REFERENCE NO.	SHEET NO.
	U-2734	EC-26/CONST.12
	R/W SHEET NO.	12
ROADWAY DESIGN ENGINEER	HYDRAULICS ENGINEER	
CONST. REV.		
R/W REV.		


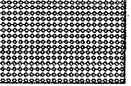



-L-
 PI Sta 45+08.549
 $\Delta = 1' 45'' 16.2'' (LT)$
 $L = 107.023$
 $T = 53.516$
 $R = 3,495.000$
 $SE = NC$

NOTE: SEE SHEETS NO. 20 & 21 FOR -L- PROFILE
 SEE SHEET NO. 25 FOR -Y5- PROFILE
 SEE SHEET NO. 26 FOR -Y13- PROFILE
 SEE SHEET NO. 2-P FOR INTERSECTION DETAIL OF -Y13- & -Y5-



NOTE: REMOVE EXISTING PAVEMENT UNDER PROPOSED GRASS ISLANDS THRU-OUT PROJECT

LEGEND	
	PAVEMENT REMOVAL
	BIKE PATH
	PROPOSED 125mm CONCRETE MONOLITHIC ISLAND (KEYED IN)

NOTE: 375mm PIPE WILL HAVE 1.8 MTN. OF CL. B RIP RAP AND 5.9 SM OF FF.

-Y5-
 PI Sta 10+51.810
 $\Delta = 2' 48'' 03.3'' (LT)$
 $L = 66.243$
 $T = 33.527$
 $R = 174.096$
 $SE = .04$