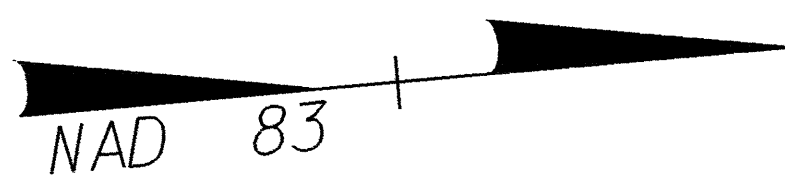


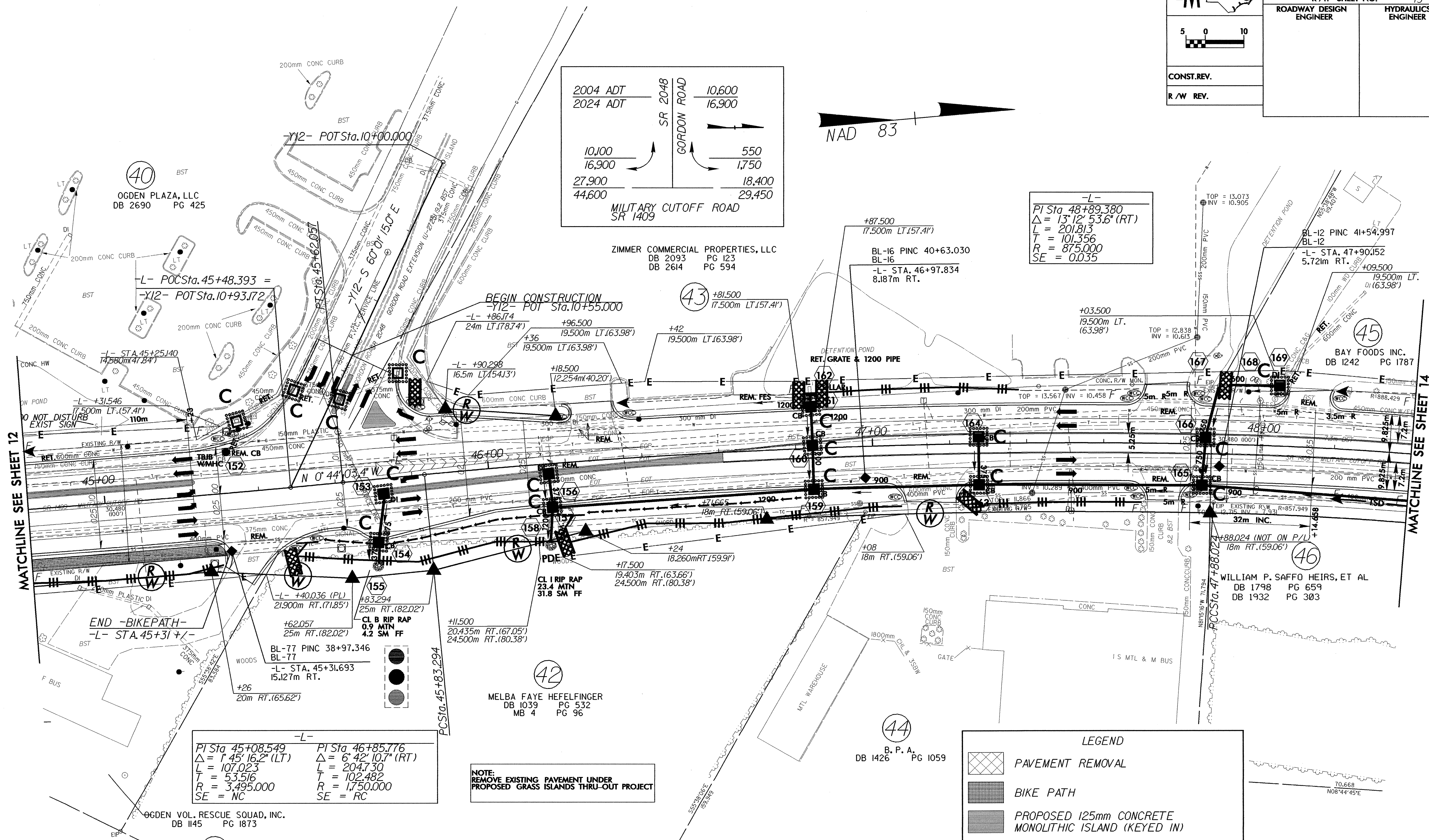
PROJECT REFERENCE NO.	SHEET NO.
U-2734	EC-27/CONST.13
R/W SHEET NO.	13
ROADWAY DESIGN ENGINEER	HYDRAULICS ENGINEER
CONST.REV.	
R/W REV.	

2004 ADT	SR 2048	10,600
2024 ADT	GORDON ROAD	16,900
		550
		1,750
27,900		18,400
44,600		29,450

MILITARY CUTOFF ROAD  
SR 1409



-L-  
PI Sta 48+89.380  
Δ = 13°12'53.6" (RT)  
L = 201.813  
T = 101.356  
R = 875.000  
SE = 0.035



-L-  
PI Sta 45+08.549    PI Sta 46+85.776  
Δ = 1°45'16.2" (LT)    Δ = 6°42'10.7" (RT)  
L = 107.023    L = 204.730  
T = 53.516    T = 102.482  
R = 3,495.000    R = 1,750.000  
SE = NC    SE = RC

NOTE:  
REMOVE EXISTING PAVEMENT UNDER  
PROPOSED GRASS ISLANDS THRU-OUT PROJECT

LEGEND

	PAVEMENT REMOVAL
	BIKE PATH
	PROPOSED 125mm CONCRETE MONOLITHIC ISLAND (KEYED IN)

NOTE: SEE SHEET NO.21 FOR -L- PROFILE  
SEE SHEET NO.26 FOR -Y12- PROFILE  
SEE SHEET NO.2-Q FOR INTERSECTION DETAIL OF -Y12-