

8/17/99

-BIKEPATH-

METRIC

PROJECT REFERENCE NO. U-2734 SHEET NO. 2-M

R/W SHEET NO.

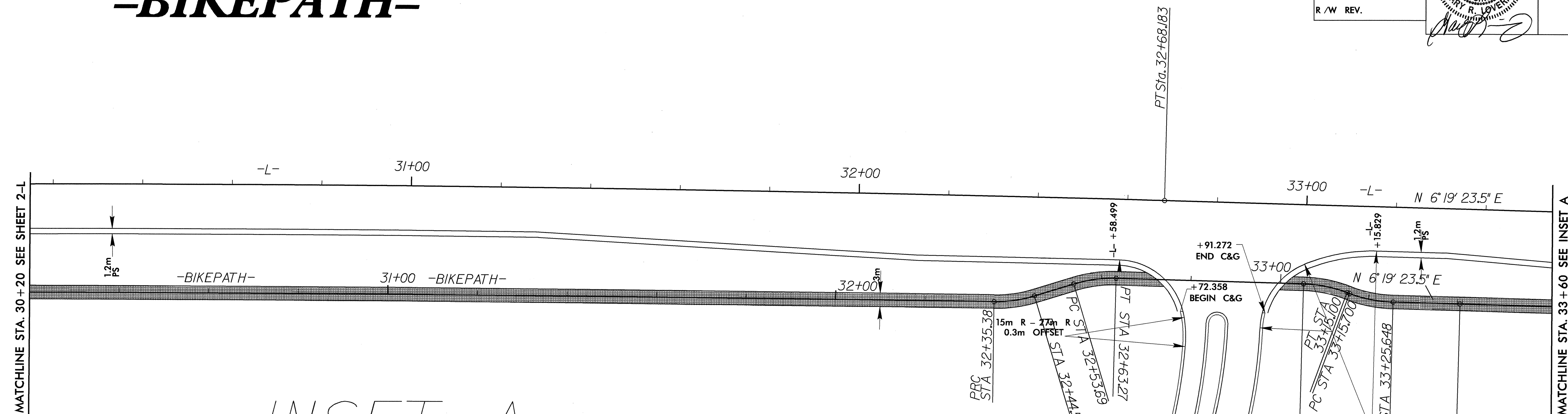
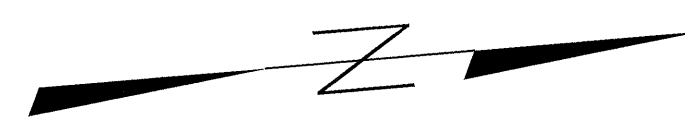
ROADWAY DESIGN ENGINEER HYDRAULICS ENGINEER

CONST. REV.

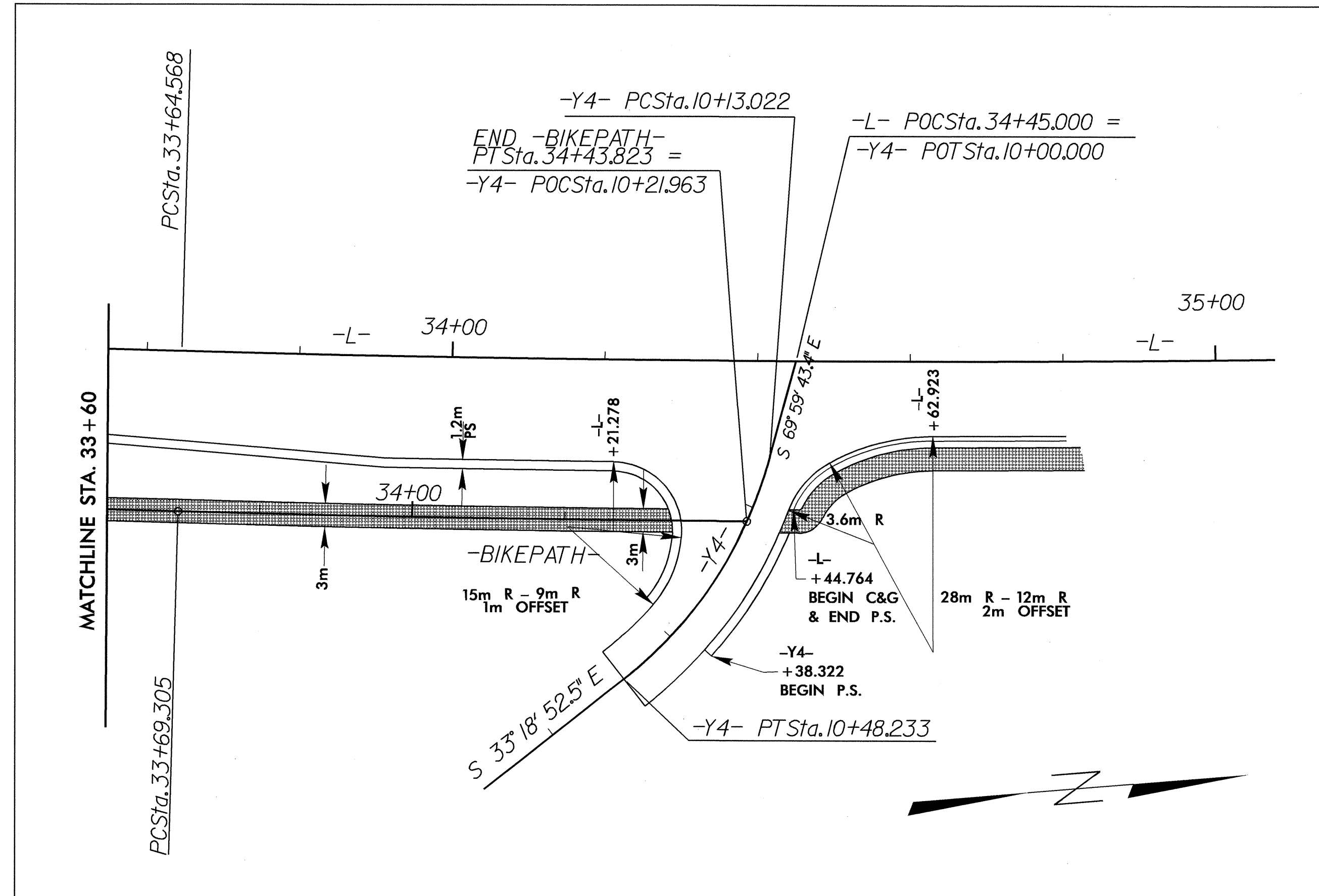
R/W REV.

5 0 10

NORTH CAROLINA PROFESSIONAL SEAL 25873 GARY R. LOVERING



INSET A



-BIKEPATH-			
PI Sta. 31+18.667	PI Sta. 32+40	PI Sta. 32+58.524	PI Sta. 33+10.172
$\Delta = 0^\circ 42' 14.12''$ (RT)	$\Delta = 17^\circ 30' 29.14''$ (RT)	$\Delta = 18^\circ 17' 24.58''$ (RT)	$\Delta = 19^\circ 00' 00.60''$ (RT)
L = 233.429	L = 9.167	L = 9.577	L = 9.948
T = 116.716	T = 4.62	T = 4.829	T = 5.02
SE = 19,000.000	R = 30	R = 30	R = 30
SE = RC	SE = RC	SE = RC	SE = RC
-BIKEPATH-			
PI Sta. 33+20.720	PI Sta. 34+06.565		
$\Delta = 19^\circ 00' 01.160''$ (RT)	$\Delta = 1^\circ 12' 51.60''$ (RT)		
L = 9.949	L = 74.518		
T = 5.02	T = 37.261		
R = 30	R = 3515.995		
SE = RC	SE = RC		

MAINTENANCE BY OTHERS

NOTE: SEE SHEET 24 FOR -BIKEPATH- PROFILE
SEE SHEET 9 & 10 FOR -L- ALIGNMENT

DATE: 02/14/99
SCALE: AS SHOWN
BY: GARY R. LOVERING