
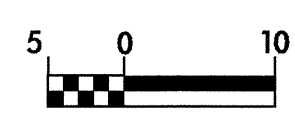



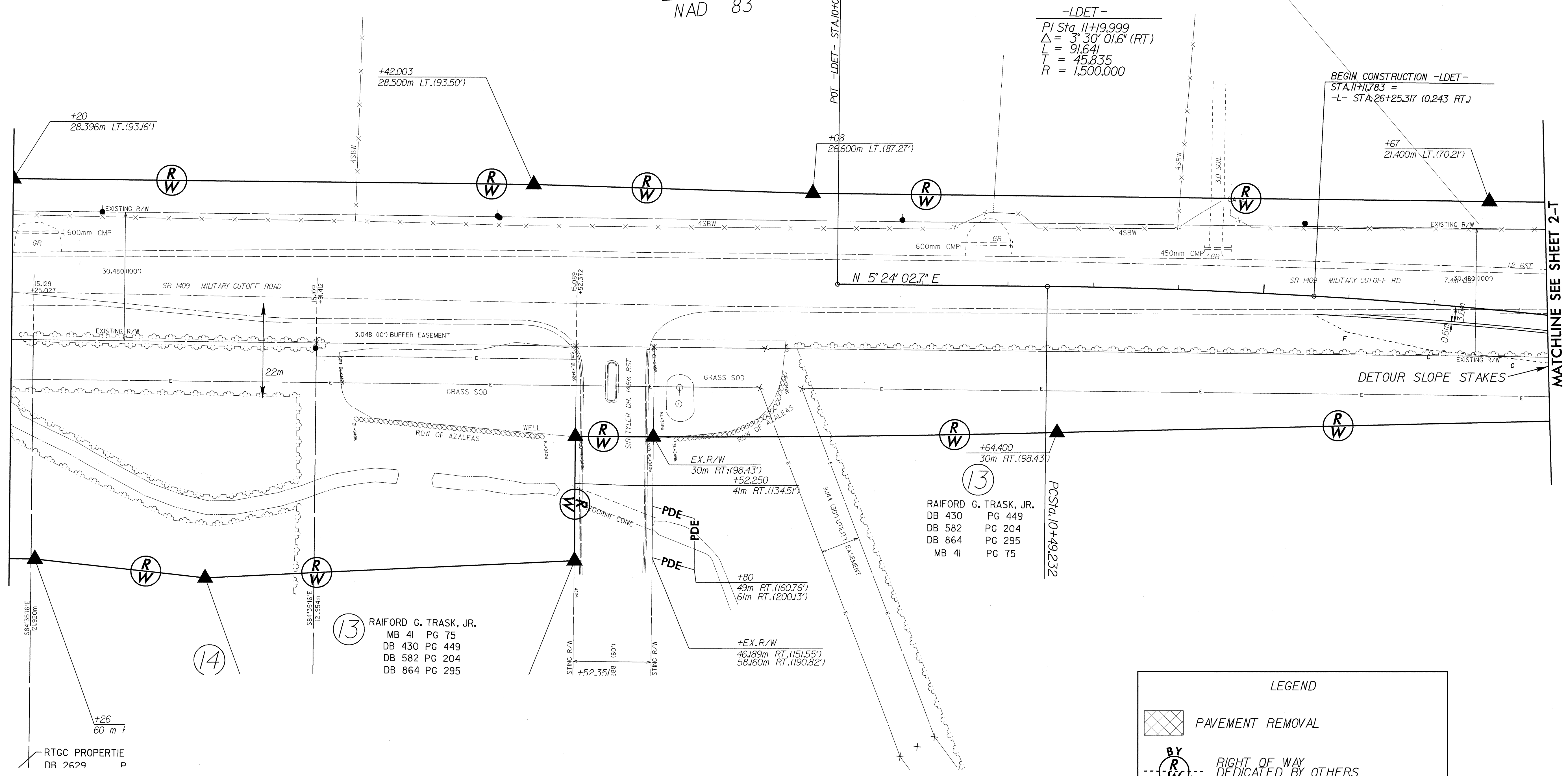
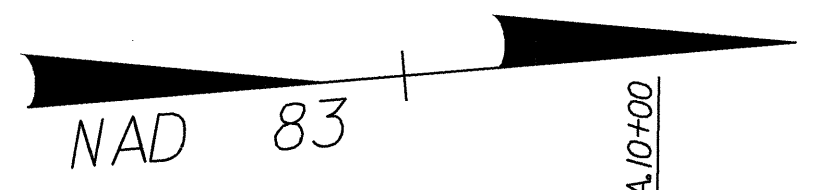
6/10/23

DETAIL OF TEMPORARY DETOUR FOR CULVERT CONSTRUCTION

	PROJECT REFERENCE NO.	SHEET NO.
	U-2734	2-T
	R / W SHEET NO.	7
	ROADWAY DESIGN ENGINEER	HYDRAULICS ENGINEER
CONST. REV.		
R / W REV.		

NOTE: SEE SHEET NO.18 FOR -L- PROFILE
 SEE SHEETS NO.22 & 23 FOR -BIKE- PROFILE
 SEE SHEET NO.7 FOR PROPOSED -L- ALIGNMENT
 SEE SHEET NO.28 FOR -LDET- PROFILE
 SEE SHEET NO.2-H FOR NATURAL STREAM DESIGN DETAILS

4A
 MAYFAIRE I, LLC
 DB 3780 PG 209



-LDET-
 PI Sta. 11+9.999
 $\Delta = 3^\circ 30' 01.6''$ (RT)
 $L = 91.641$
 $T = 45.835$
 $R = 1,500.000$


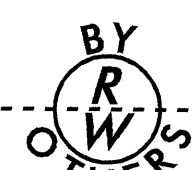
BEGIN CONSTRUCTION -LDET-
 STA.11+783 =
 -L- STA.26+25.317 (0.243 RT)

13
 RAIFORD G. TRASK, JR.
 DB 430 PG 449
 DB 582 PG 204
 DB 864 PG 295
 MB 41 PG 75

13
 RAIFORD G. TRASK, JR.
 MB 41 PG 75
 DB 430 PG 449
 DB 582 PG 204
 DB 864 PG 295

RTGC PROPRIETARY
 DR 2629

LEGEND

	PAVEMENT REMOVAL
	RIGHT OF WAY DEDICATED BY OTHERS

03-DEC-2003 14:28
 BrandonJohnson
 10/16/2023