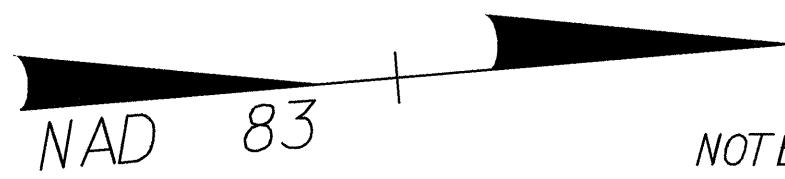


DETAIL FOR TEMPORARY DETOUR FOR CULVERT CONSTRUCTION

4A
MAYFAIRE I, LLC
DB 3780 PG 209



LEGEND

PAVEMENT REMOVAL

RIGHT OF WAY DEDICATED BY OTHERS

PROJECT REFERENCE NO. U-2734
SHEET NO. 2-V

R/W SHEET NO. 9

ROADWAY DESIGN ENGINEER
NORTH CAROLINA PROFESSIONAL ENGINEER
GARY R. LOVERING
25873

HYDRAULICS ENGINEER

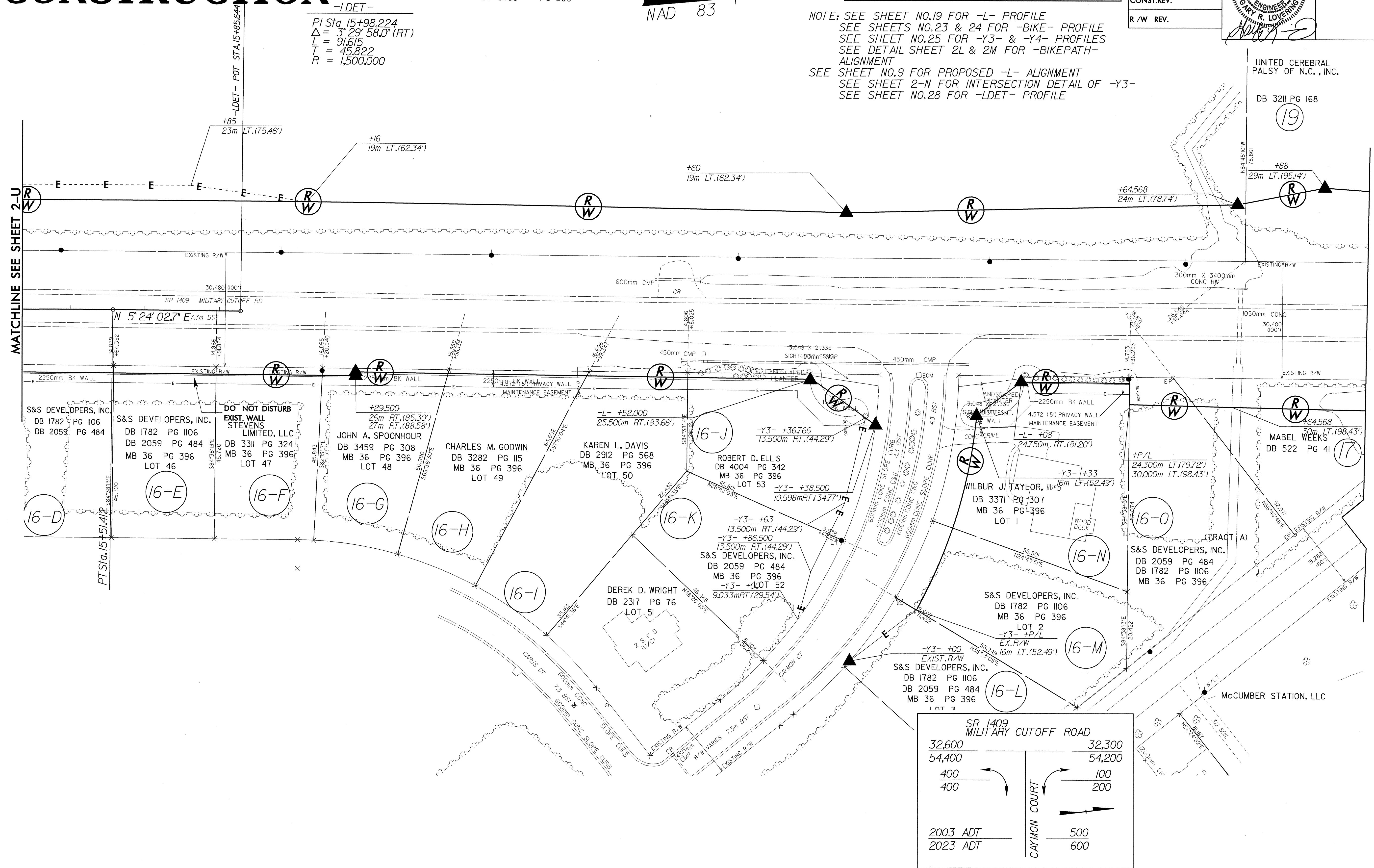
CONST. REV.

R/W REV.

-LDET-
PI Sta. 15+98.224
 $\Delta = 3^\circ 29' 58.0''$ (RT)
L = 91.615
T = 45.822
R = 1,500.000

NOTE: SEE SHEET NO.19 FOR -L- PROFILE
SEE SHEETS NO.23 & 24 FOR -BIKE- PROFILE
SEE SHEET NO.25 FOR -Y3- & -Y4- PROFILES
SEE DETAIL SHEET 2L & 2M FOR -BIKEPATH- ALIGNMENT
SEE SHEET NO.9 FOR PROPOSED -L- ALIGNMENT
SEE SHEET 2-N FOR INTERSECTION DETAIL OF -Y3-
SEE SHEET NO.28 FOR -LDET- PROFILE

UNITED CEREBRAL PALSY OF N.C., INC.
DB 3211 PG 168



MATCHLINE SEE SHEET 2-U

PT Sta. 15+51.412

SR 1409 MILITARY CUTOFF ROAD

32,600	32,300
54,400	54,200
400	100
400	200
CAYMON COURT	
2003 ADT	500
2023 ADT	600