

6/10/93

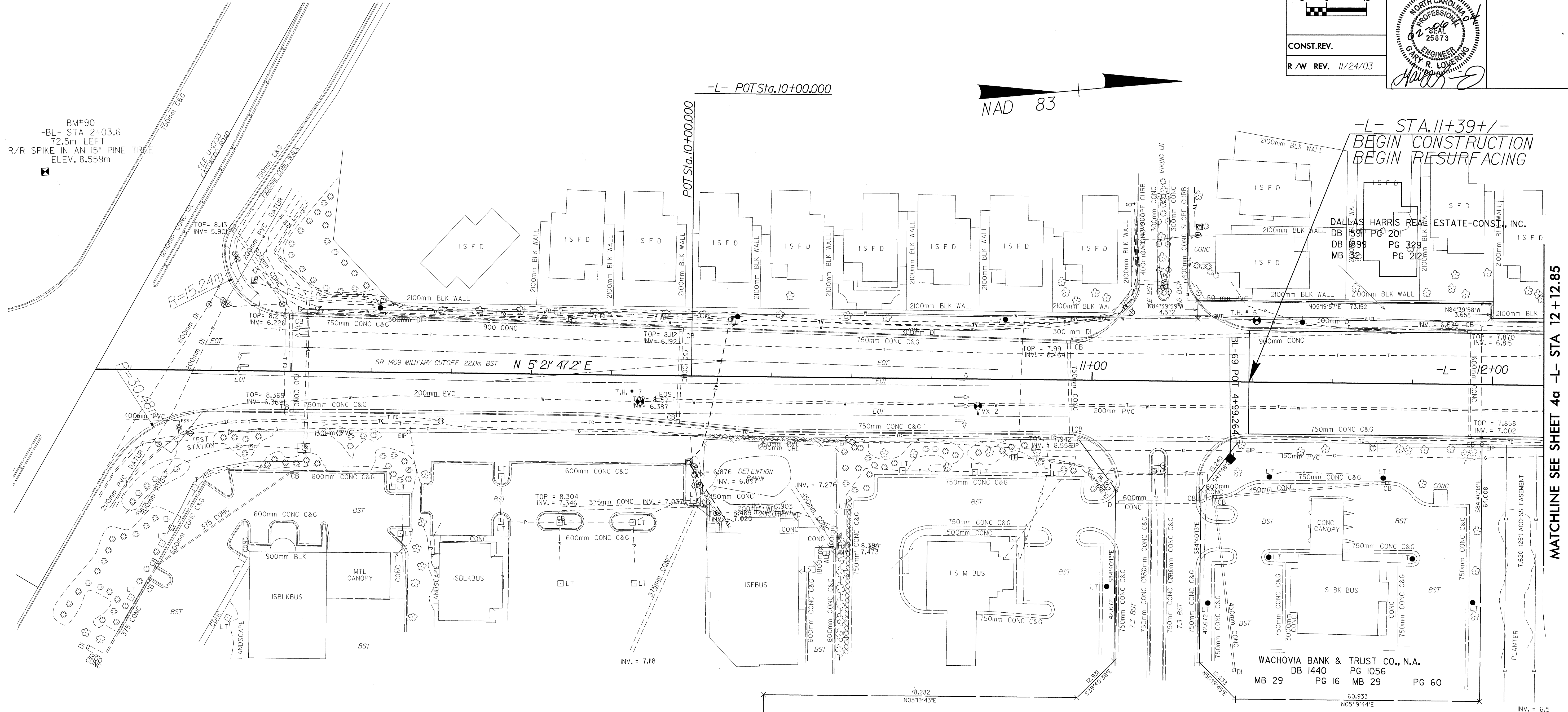
METRIC

5 0 10

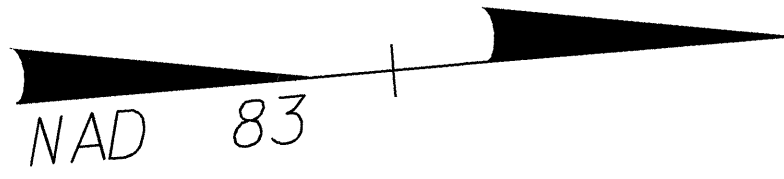
CONST. REV.

R/W REV. 11/24/03

PROJECT REFERENCE NO.	SHEET NO.
U-2734	4
R/W SHEET NO.	4
ROADWAY DESIGN ENGINEER	HYDRAULICS ENGINEER
<i>(Signature)</i>	<i>(Signature)</i>



BM#90
-BL- STA 2+03.6
72.5m LEFT
R/R SPIKE IN AN 15' PINE TREE
ELEV. 8.559m



-L- STA. 11+39 +/-
BEGIN CONSTRUCTION
BEGIN RESURFACING

MATCHLINE SEE SHEET 4a -L- STA 12 + 12.85

DATUM DESCRIPTION

THE LOCALIZED COORDINATE SYSTEM DEVELOPED FOR THIS PROJECT IS BASED ON THE STATE PLANE COORDINATES ESTABLISHED BY NCGS FOR MONUMENT "SUNOCO" WITH NAD 83 STATE PLANE GRID COORDINATES OF NORTHING: 57788.587(m) EASTING: 717720.854(m) THE AVERAGE COMBINED GRID FACTOR USED ON THIS PROJECT (GROUND TO GRID) IS: 1.000017450 THE N.C. LAMBERT GRID BEARING LOCALIZED HORIZONTAL GROUND DISTANCE FROM "SUNOCO" TO -L- STATION 13+10.000 IS S 8° 44' 29.09" W 5,701.042m ALL LINEAR DIMENSIONS ARE LOCALIZED HORIZONTAL DISTANCES VERTICAL DATUM USED IS NGVD 29

LEGEND

- BIKE PATH
- PROPOSED 125mm CONCRETE MONOLITHIC ISLAND (KEYED IN)
- RIGHT OF WAY DEDICATED BY OTHERS

23-JAN-2004 15:35
Shelley AT RD222454