

6/10/24

THE VILLAGE AT MAYFAIRE, LLC  
DB 3780 PG 209

4B

-L-  
PI Sta. 35+26.422  
 $\Delta = 5' 18" 10.7" (LT)$   
L = 323.478  
T = 161.854  
R = 3,495.000  
SE = NC



NOTE: SEE SHEETS NO.19 & 20 FOR -L- PROFILE  
SEE SHEET NO.24 FOR -BIKE- PROFILE  
SEE SHEET NO.25 FOR -Y4- PROFILE  
SEE DETAIL SHEET 2-M FOR -BIKEPATH- ALIGNMENT  
SEE SHEET 2-N FOR INTERSECTION DETAIL OF -Y4-

PHYLIS M. TRASK  
DB 2458 PG 493

**METRIC**

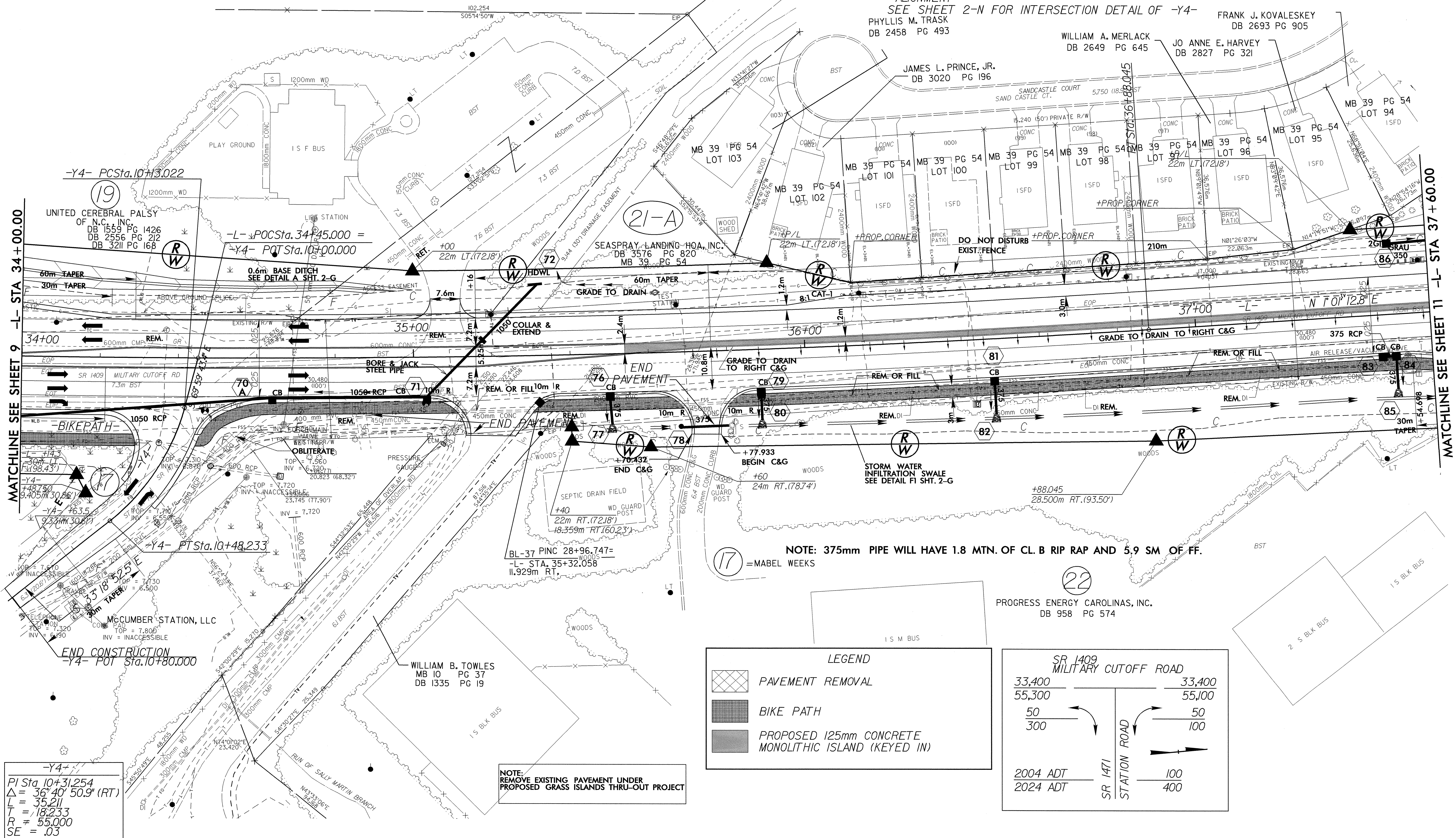
5 0 10

CONST. REV.

R/W REV. 12/22/03

PROJECT REFERENCE NO. U-2734	SHEET NO. 10
R/W SHEET NO. 10	HYDRAULICS ENGINEER
ROADWAY DESIGN ENGINEER	

TGS ENGINEERING  
975 Walnut Street, Suite 141  
Cary, NC 27511



MATCHLINE SEE SHEET 9 -L- STA 34+00.00

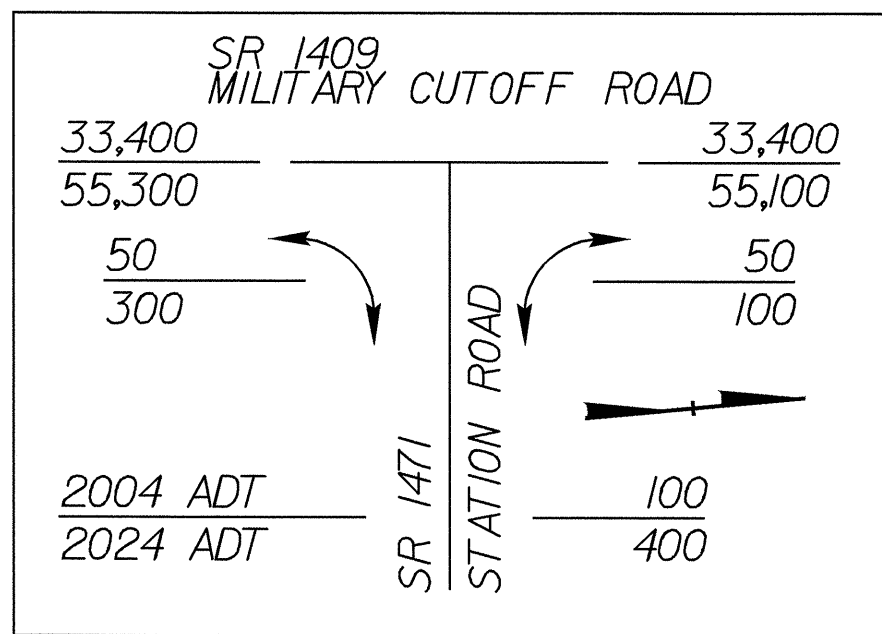
MATCHLINE SEE SHEET 11 -L- STA 37+60.00

-Y4-  
PI Sta. 10+31.254  
 $\Delta = 36' 40" 50.9" (RT)$   
L = 35.211  
T = 18.233  
R = 55.000  
SE = .03

NOTE: REMOVE EXISTING PAVEMENT UNDER PROPOSED GRASS ISLANDS THRU-OUT PROJECT

**LEGEND**

- PAVEMENT REMOVAL
- BIKE PATH
- PROPOSED 125mm CONCRETE MONOLITHIC ISLAND (KEYED IN)



NOTE: 375mm PIPE WILL HAVE 1.8 MTN. OF CL. B RIP RAP AND 5.9 SM OF FF.

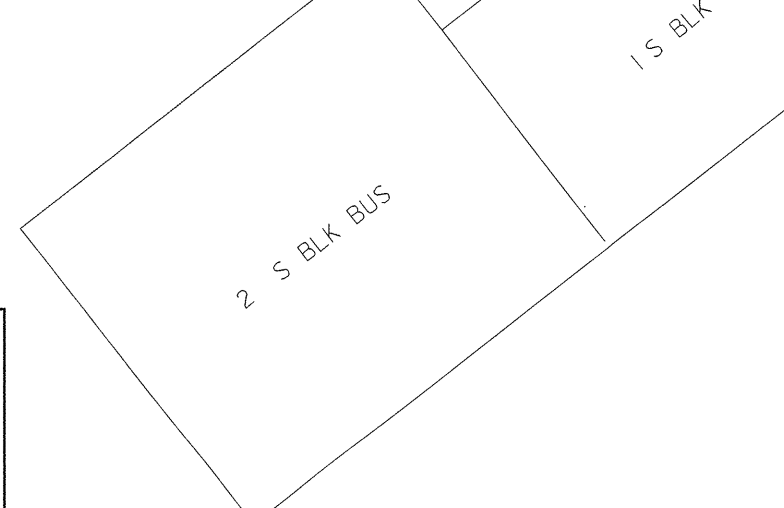
17 = MABEL WEEKS

22

PROGRESS ENERGY CAROLINAS, INC.  
DB 958 PG 574

WILLIAM B. TOWLES  
MB 10 PG 37  
DB 1335 PG 19

I S M BUS



25-FEB-2004 15:48  
S:\ah\jg  
AT 10:23:15