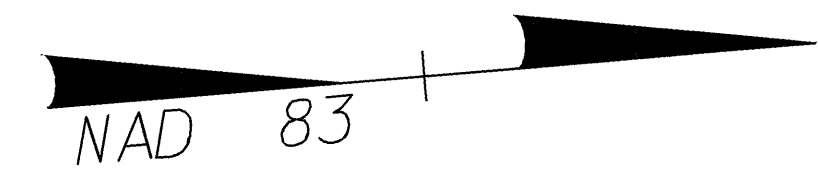


5 0 10

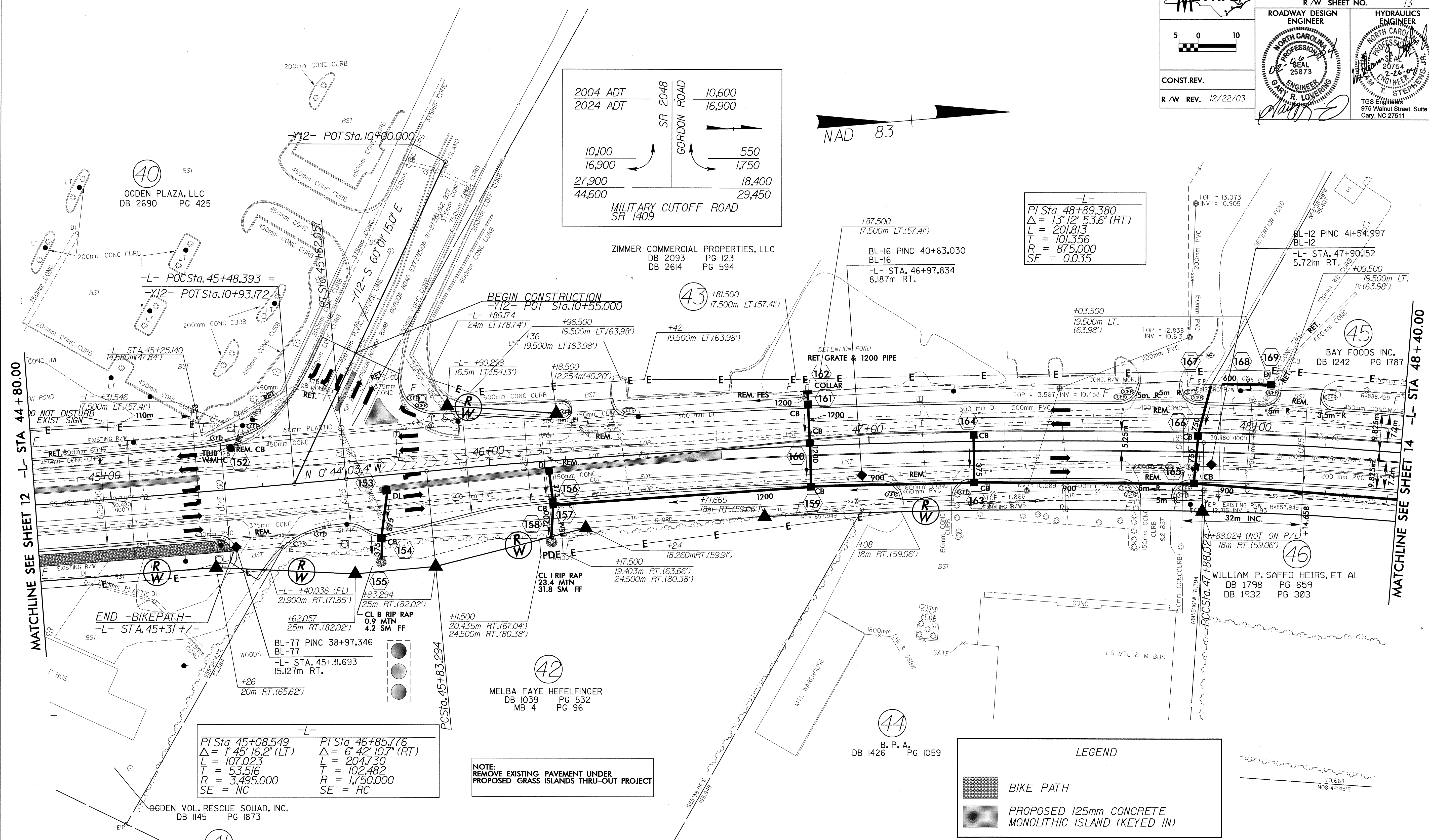
CONST. REV.  
R/W REV. 12/22/03

PROJECT REFERENCE NO. U-2734	SHEET NO. 13
R/W SHEET NO. 13	
ROADWAY DESIGN ENGINEER NORTH CAROLINA PROFESSIONAL SEAL 25873 GARY R. LOVENING	HYDRAULICS ENGINEER NORTH CAROLINA PROFESSIONAL SEAL 20754 T. STEPHENS

2004 ADT	10,600
2024 ADT	16,900
SR 2048 GORDON ROAD	
10,100	550
16,900	1,750
27,900	18,400
44,600	29,450
MILITARY CUTOFF ROAD SR 1409	



-L-  
PI Sta 48+89.380  
 $\Delta = 13^{\circ} 12' 53.6''$  (RT)  
L = 201.813  
T = 101.356  
R = 875.000  
SE = 0.035



MATCHLINE SEE SHEET 12 -L- STA 44 + 80.00

MATCHLINE SEE SHEET 14 -L- STA 48 + 40.00

-L-  
PI Sta 45+08.549    PI Sta 46+85.776  
 $\Delta = 1^{\circ} 45' 16.2''$  (LT)     $\Delta = 6^{\circ} 42' 10.7''$  (RT)  
L = 107.023    L = 204.730  
T = 53.516    T = 102.482  
R = 3,495.000    R = 1,750.000  
SE = NC    SE = RC

NOTE:  
REMOVE EXISTING PAVEMENT UNDER  
PROPOSED GRASS ISLANDS THRU-OUT PROJECT

LEGEND

- BIKE PATH
- PROPOSED 125mm CONCRETE MONOLITHIC ISLAND (KEYED IN)

NOTE: SEE SHEET NO. 21 FOR -L- PROFILE  
SEE SHEET NO. 26 FOR -Y12- PROFILE  
SEE SHEET NO. 2-Q FOR INTERSECTION DETAIL OF -Y12-