

6/10/23

METRIC

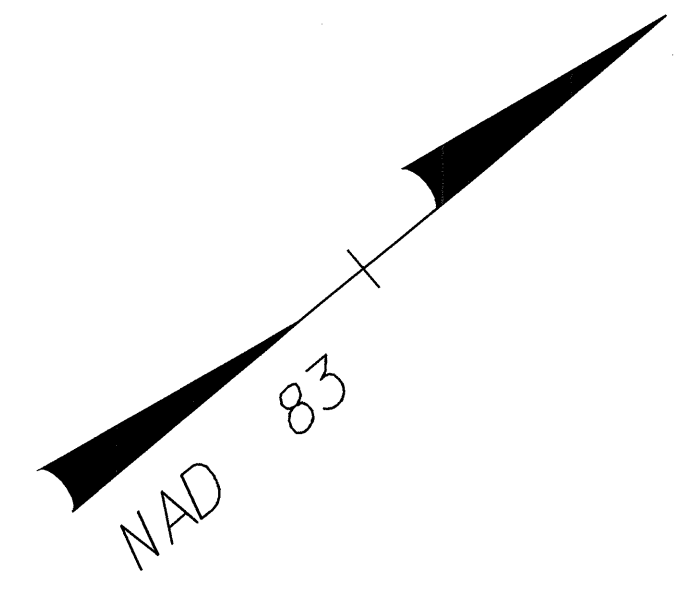
5 0 10

CONST. REV.
R/W REV. 12/22/03

PROJECT REFERENCE NO. U-2734	SHEET NO. 15
R/W SHEET NO. 15	
ROADWAY DESIGN ENGINEER	HYDRAULICS ENGINEER
TGS Engineers 875 Walnut Street, Suite 141 Cary, NC 27511	

LEGEND

- PAVEMENT REMOVAL
- PROPOSED 125mm CONCRETE MONOLITHIC ISLAND (KEYED IN)



NOTE: SEE SHEET NO.27 FOR -YI- & -DRIVE- PROFILES

NIXON ASSOCIATES, LLC
DB 3174 PG 337

54

55
ENOCH CHAPEL MISSIONARY BAPTIST CHURCH
DB 1235 PG 1978

FANNY FRAZIER LIFE ESTATE
DB 1197 PG 614
DB 907 PG 176

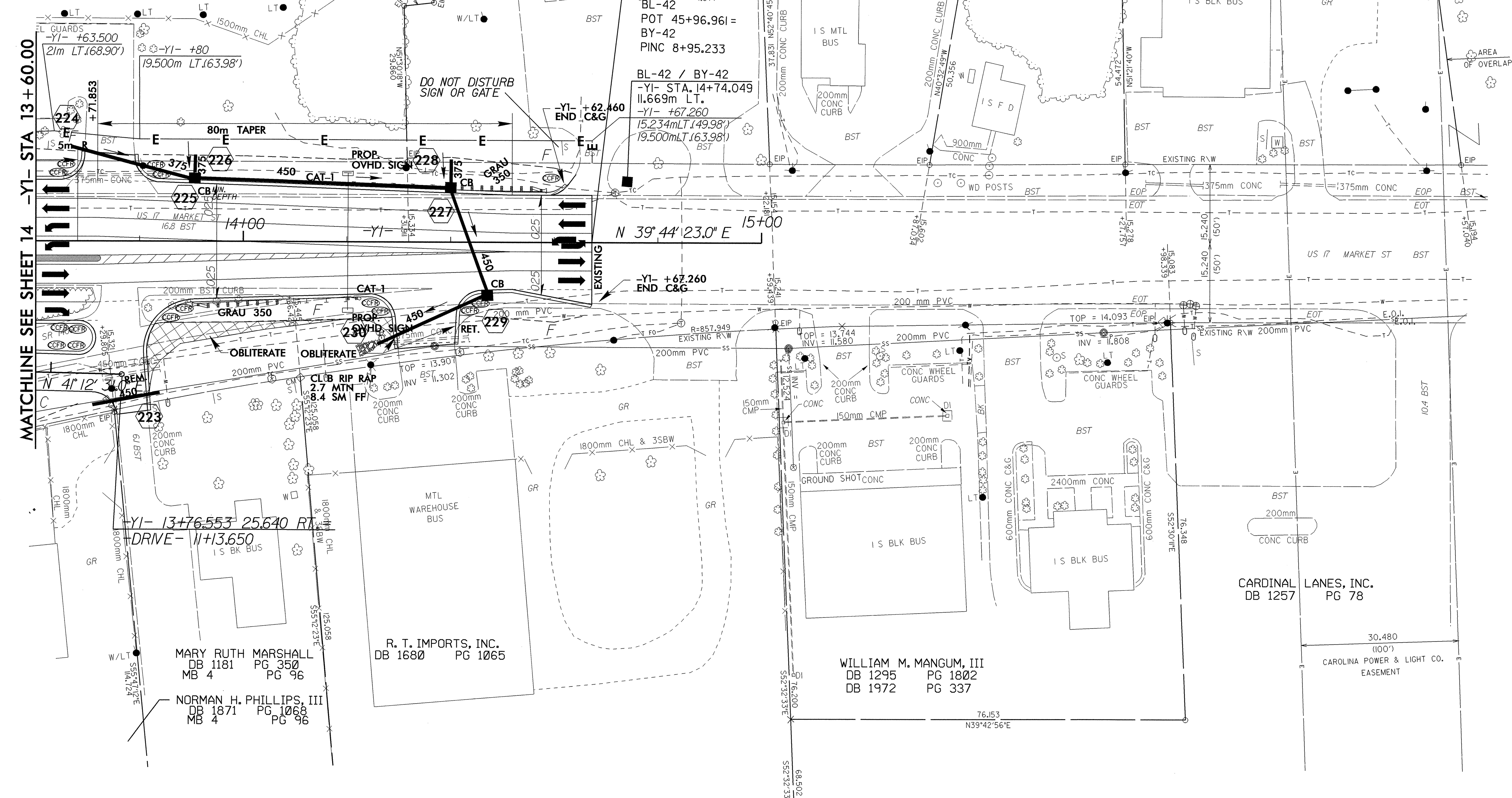
WICKER WORKS, INC.
DB 1464 PG 1208

WILLIAM T. EVANS, SR. HEIRS
DB 418 PG 424

PHILLIP MCINNIS, JR.
DB 1838 PG 464
MB 34 PG 196

MATCHLINE SEE SHEET 14 -YI- STA 13+60.00

-YI- 13+76.553 25.640 RT
-DRIVE- 11+13.650



25-FEB-2004 15:47
S:\Asb\lay_A\102721\2734_15.dwg