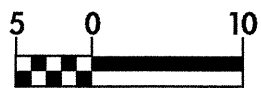
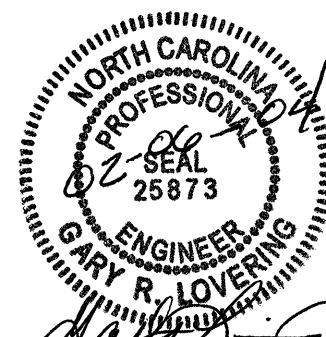
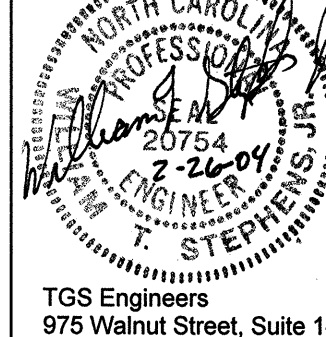
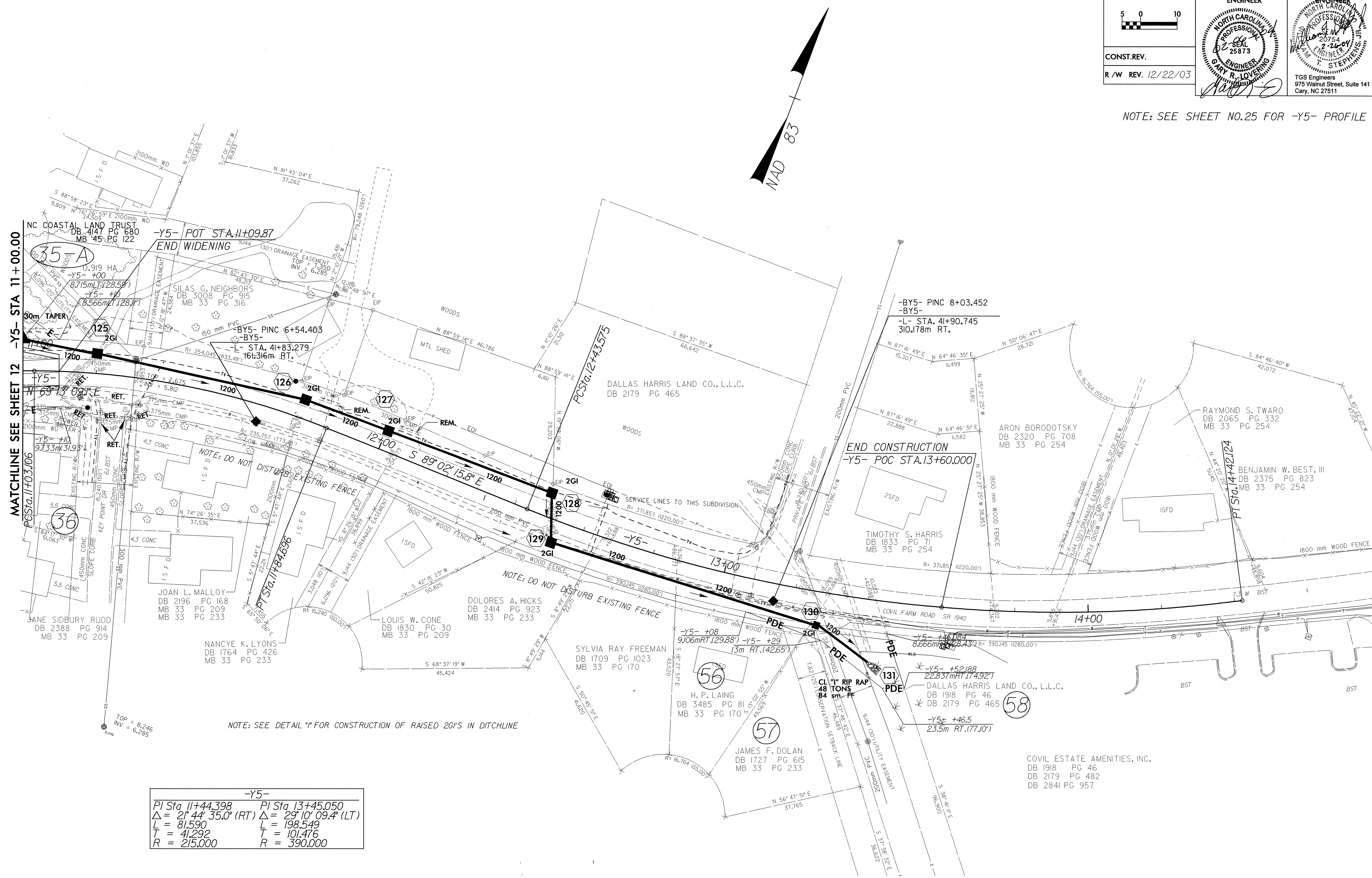
	PROJECT REFERENCE NO.	SHEET NO.
	U-2734	16
	R/W SHEET NO.	16
	ROADWAY DESIGN ENGINEER	HYDRAULICS ENGINEER
		
CONST.REV.		
R/W REV. 12/22/03		

TGS Engineers
975 Walnut Street, Suite 141
Cary, NC 27511

NOTE: SEE SHEET NO.25 FOR -Y5- PROFILE



MATCHLINE SEE SHEET 12 -Y5- STA 11+00.00
PCSta. 11+03.06

-Y5-	
PI Sta 11+44.398	PI Sta 13+45.050
$\Delta = 21^{\circ} 44' 35.0''$ (RT)	$\Delta = 29^{\circ} 10' 09.4''$ (LT)
L = 81,590	L = 198,549
T = 41,292	T = 101,476
R = 215,000	R = 390,000

NOTE: SEE DETAIL "I" FOR CONSTRUCTION OF RAISED 2G'S IN DITCHLINE

NOTE: DO NOT DISTURB EXISTING FENCE

NOTE: DO NOT DISTURB EXISTING FENCE