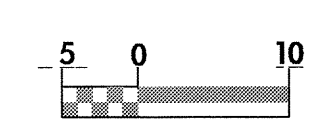
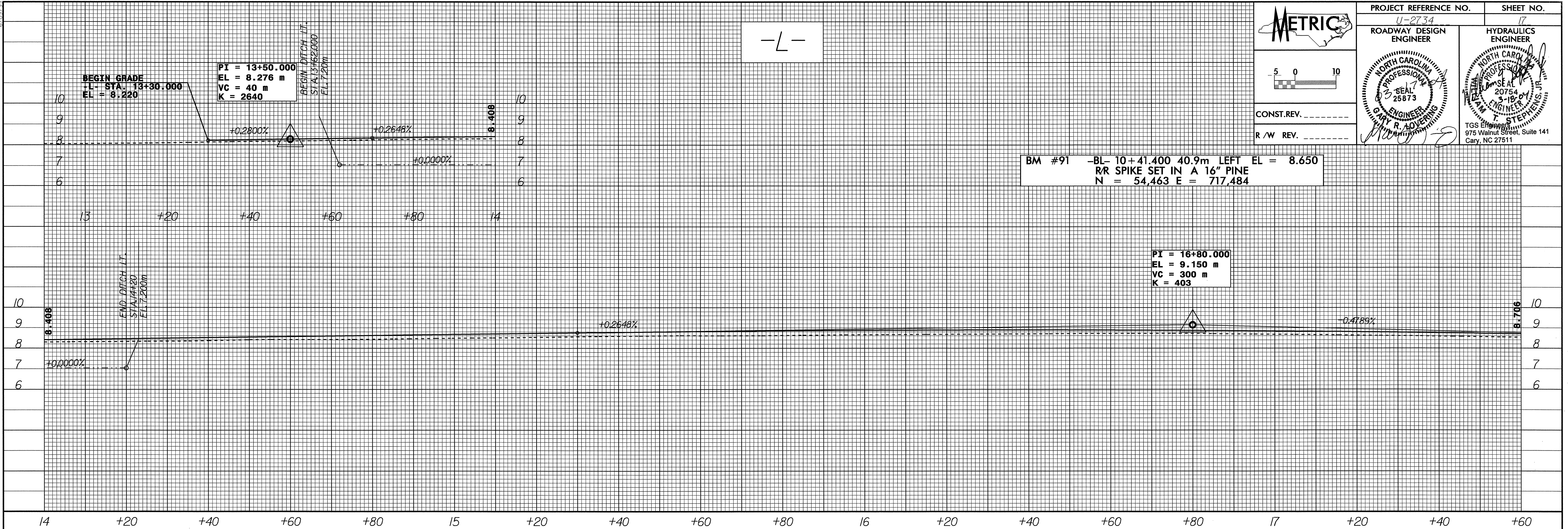




PROJECT REFERENCE NO. U-2734	SHEET NO. 17
ROADWAY DESIGN ENGINEER	HYDRAULICS ENGINEER
CONST. REV. _____	
R/W REV. _____	



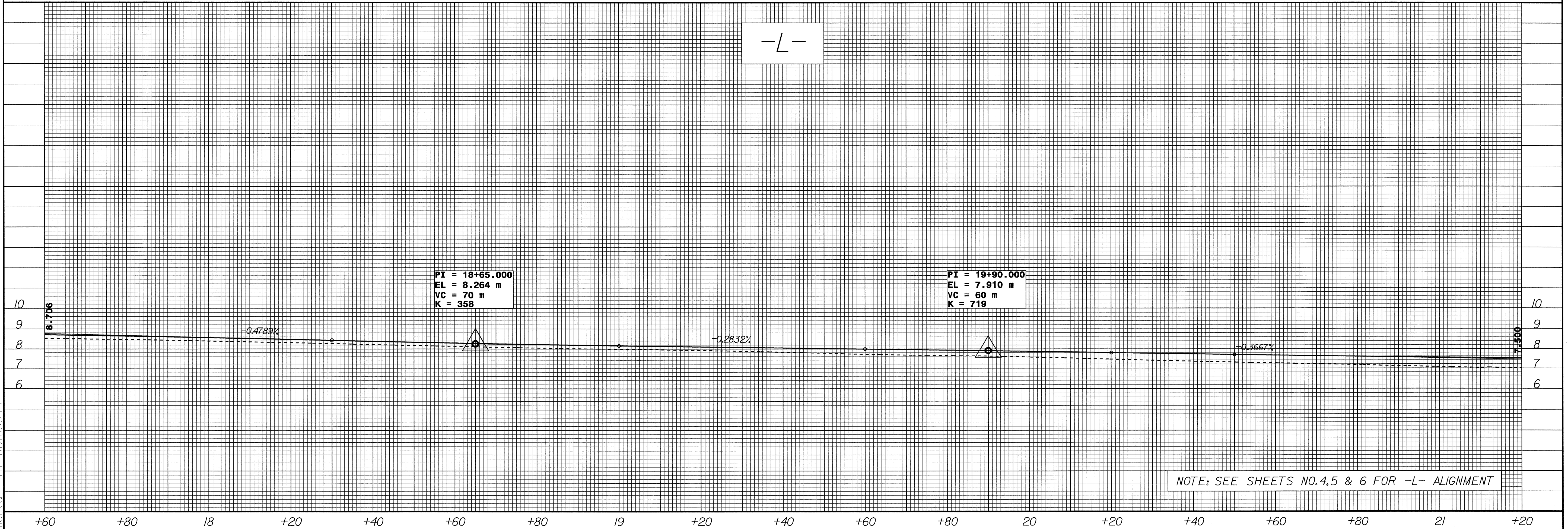
-L-



BM #91 -BL- 10+41.400 40.9m LEFT EL = 8.650
 R/R SPIKE SET IN A 16" PINE
 N = 54,463 E = 717,484

PI = 16+80.000
 EL = 9.150 m
 VC = 300 m
 K = 403

-L-



PI = 18+65.000
 EL = 8.264 m
 VC = 70 m
 K = 358

PI = 19+90.000
 EL = 7.910 m
 VC = 60 m
 K = 719

NOTE: SEE SHEETS NO.4,5 & 6 FOR -L- ALIGNMENT

15-MAR-2004 15:55
 R:\proj\11\17\34.dwg
 mduval AI RD188649