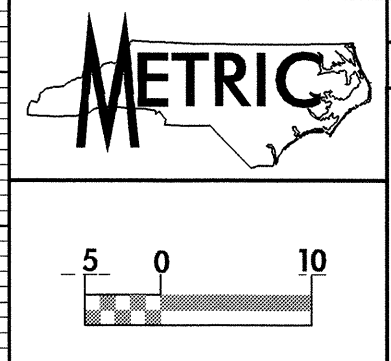


6/20/04

DITCH LEGEND
 LEFT DITCH - - - - -
 RIGHT DITCH - - - - -

-L-

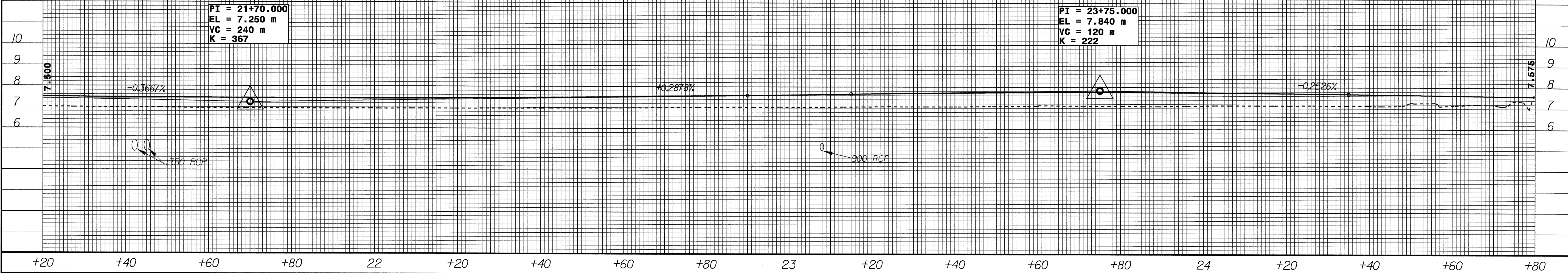


PROJECT REFERENCE NO. U-2734	SHEET NO. 18
ROADWAY DESIGN ENGINEER NORTH CAROLINA PROFESSIONAL ENGINEER 25873	HYDRAULICS ENGINEER NORTH CAROLINA PROFESSIONAL ENGINEER 20754
CONST. REV. _____	
R/W REV. 07/16/03	

PIPE HYDRAULIC DATA
 DRAINAGE STRUCTURE NO. 36&37
 DRAINAGE AREA = 38.4 HA
 DESIGN FREQUENCY = 50 YRS
 DESIGN DISCHARGE = 4.3 CMS
 DESIGN HW ELEVATION = 6.75 M
 100 YEAR DISCHARGE = 4.9 CMS
 100 YEAR HW ELEVATION = 7.32 M
 OVERTOPPING FREQUENCY = 200+ YRS
 OVERTOPPING DISCHARGE = 5.5 CMS
 OVERTOPPING ELEVATION = 7.4 M

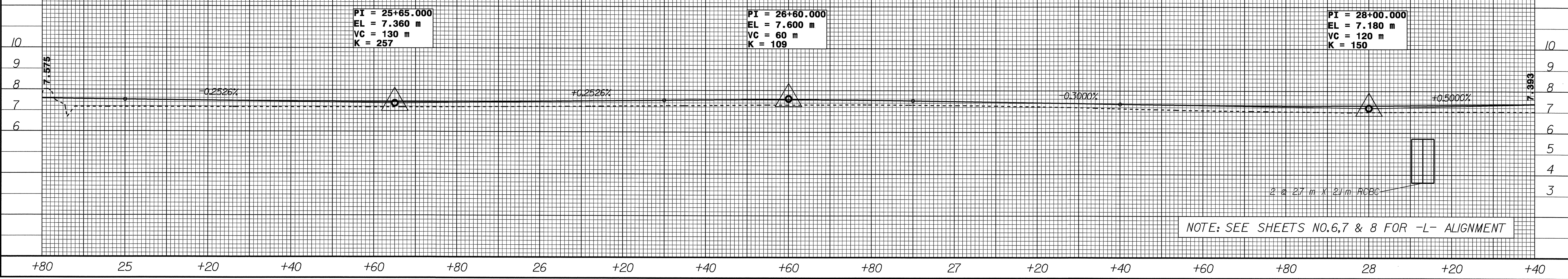
PIPE HYDRAULIC DATA
 DRAINAGE STRUCTURE NO. 40
 DRAINAGE AREA = 10.5 HA
 DESIGN FREQUENCY = 50 YRS
 DESIGN DISCHARGE = 1.30 CMS
 DESIGN HW ELEVATION = 6.26 M
 100 YEAR DISCHARGE = 1.51 CMS
 100 YEAR HW ELEVATION = 6.41 M
 OVERTOPPING FREQUENCY = 500+ YRS
 OVERTOPPING DISCHARGE = 2.8 CMS
 OVERTOPPING ELEVATION = 7.62 M

BM #92 -BL- 17+49.300 7.8m RIGHT EL = 6.686m
 RR SPIKE SET IN A 28" PINE
 N = 55,163 E = 717,599



-L-

STRUCTURE HYDRAULIC DATA
 DESIGN DISCHARGE = 20 CMS
 DESIGN FREQUENCY = 50 YRS
 DESIGN HW ELEVATION = 5.74 M
 BASE DISCHARGE = 23.2 CMS
 BASE FREQUENCY = 100 YRS
 BASE HW ELEVATION = 5.88 M
 OVERTOPPING DISCHARGE = 46 CMS
 OVERTOPPING FREQUENCY = 500 YRS
 OVERTOPPING ELEVATION = 7.29 M



NOTE: SEE SHEETS NO.6,7 & 8 FOR -L- ALIGNMENT

25-FEB-2004 16:31
 R:\proj\2734\rf\A\West\A1_R0133405