

6/02/04

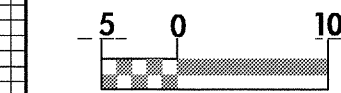
DITCH LEGEND
LEFT DITCH

-BIKEPATH-



PROJECT REFERENCE NO. U-2734 SHEET NO. 23

ROADWAY DESIGN ENGINEER HYDRAULICS ENGINEER



CONST. REV. _____

R/W REV. _____



PI = 24+00.000
EL = 6.463 m
VC = 440 m
K = 876

PI = 27+00.000
EL = 7.220 m
VC = 60 m
K = 108



+60 +80 24 +20 +40 +60 +80 25 +20 +40 +60 +80 26 +20 +40 +60 +80 27 +20

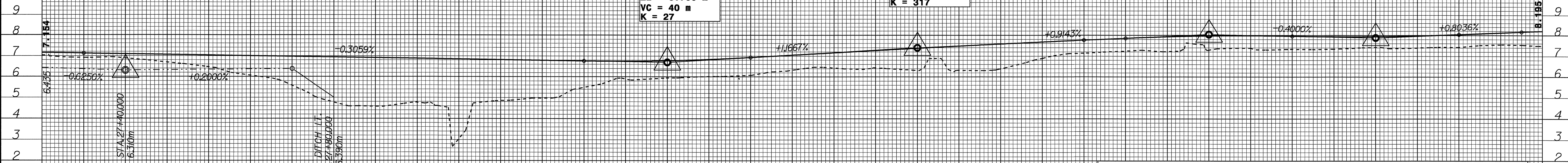
-BIKEPATH-

PI = 28+70.000
EL = 6.700 m
VC = 40 m
K = 27

PI = 29+30.000
EL = 7.400 m
VC = 80 m
K = 317

PI = 30+00.000
EL = 8.040 m
VC = 40 m
K = 30

PI = 30+40.000
EL = 7.880 m
VC = 40 m
K = 33



+20 +40 +60 +80 28 +20 +40 +60 +80 29 +20 +40 +60 +80 30 +20 +40 +60 +80

NOTE: SEE DETAIL SHEETS NO. 2K, & 2L FOR -BIKEPATH- ALIGNMENT

03-DEC-2003 14:13
P:\proj\U2734\p1
Brandon Johnson AT RD187165