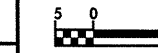




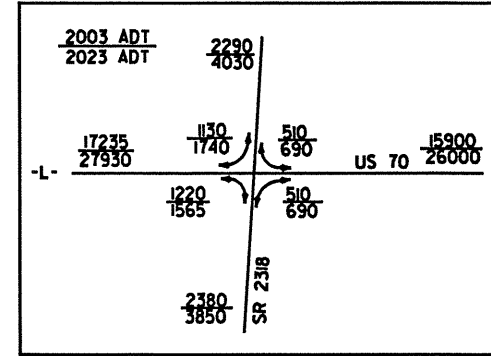
PRELIMINARY PLANS
DO NOT USE FOR CONSTRUCTION
INCOMPLETE PLANS
DO NOT USE FOR R/W ACQUISITION



CONST. REV.

R/W REV.

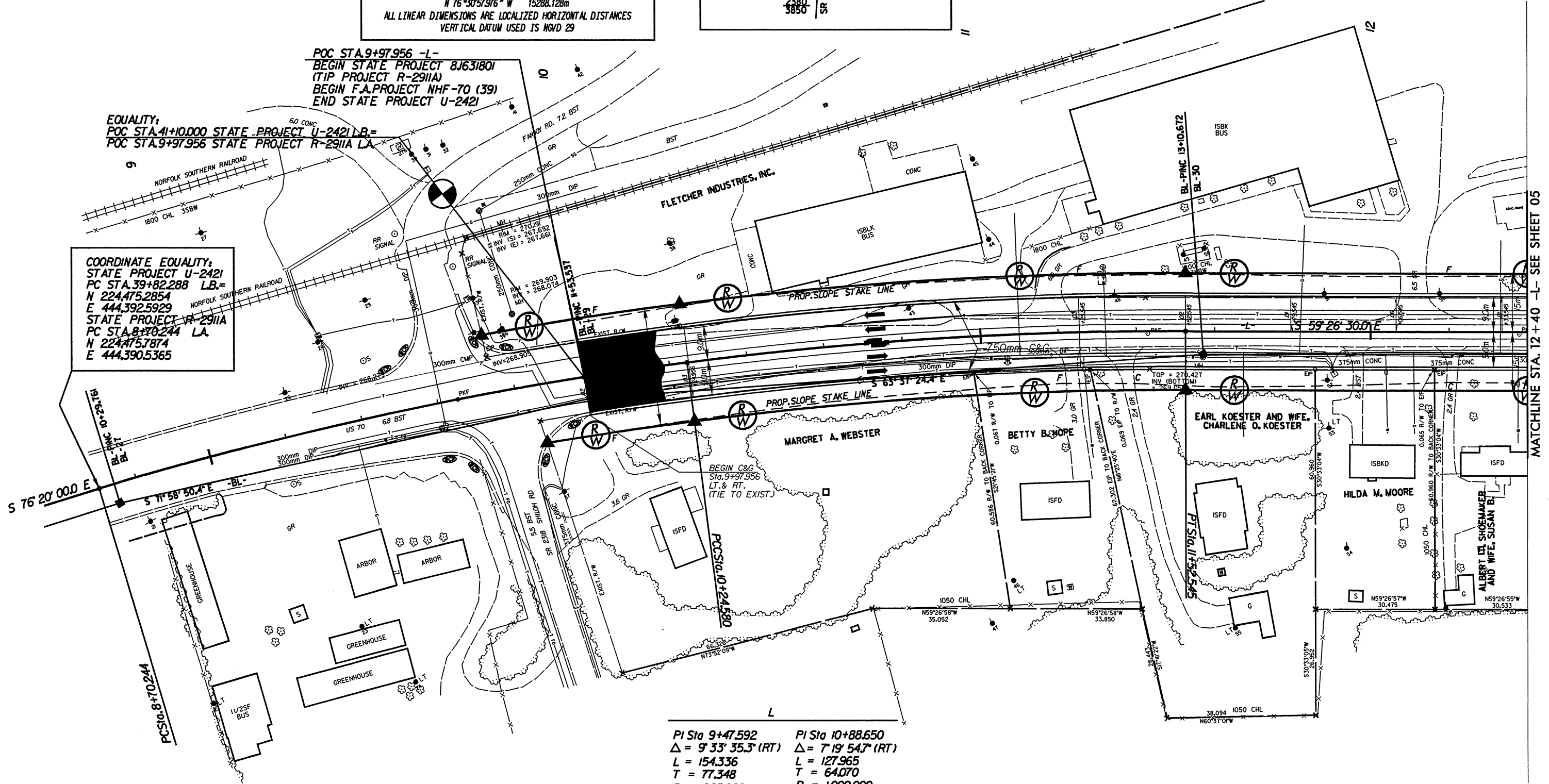
DATUM DESCRIPTION
THE LOCALIZED COORDINATE SYSTEM DEVELOPED FOR THIS PROJECT IS BASED ON THE STATE PLANE COORDINATES ESTABLISHED BY NCSS FOR MONUMENT "384-JAS" WITH NAD 83 STATE PLANE GRID COORDINATES OF NORTHING: 220871.892(m) EASTING: 459380.926(m) THE AVERAGE COMBINED GRID FACTOR USED ON THIS PROJECT (GROUND TO GRID) IS: 0.999873400 THE N.C. LAMBERT GRID BEARING LOCALIZED HORIZONTAL GROUND DISTANCE FROM "384-JAS" TO L- POC STATION 10+00.000 IS N 76°30'57.976" W 15288.128m ALL LINEAR DIMENSIONS ARE LOCALIZED HORIZONTAL DISTANCES VERTICAL DATUM USED IS NGVD 29



POC STA. 9+97.956 -L-
BEGIN STATE PROJECT 8J631801
(TIP PROJECT R-2911A)
BEGIN F.A. PROJECT NHF-70 (39)
END STATE PROJECT U-2421

EQUALITY:
POC STA. 41+10.000 STATE PROJECT U-2421 L.B.=
POC STA. 9+97.956 STATE PROJECT R-2911A L.A.

COORDINATE EQUALITY:
STATE PROJECT U-2421
PC STA. 39+82.288 L.B.=
N 224,475.2854
E 444,392.5929
STATE PROJECT R-2911A
PC STA. 8+70.244 L.A.
N 224,475.7874
E 444,390.5365



PI Sta 9+47.592	PI Sta 10+88.650
$\Delta = 9' 33' 35.3" (RT)$	$\Delta = 7' 19' 54.7" (RT)$
L = 154.336	L = 127.965
T = 77.348	T = 64.070
R = 925.000	R = 1,000.000
SUPER = 0.03	SUPER = 0.03

SEE SHEET 32 FOR -L- PROFILE

MATCHLINE STA. 12 + 40 -L- SEE SHEET 05