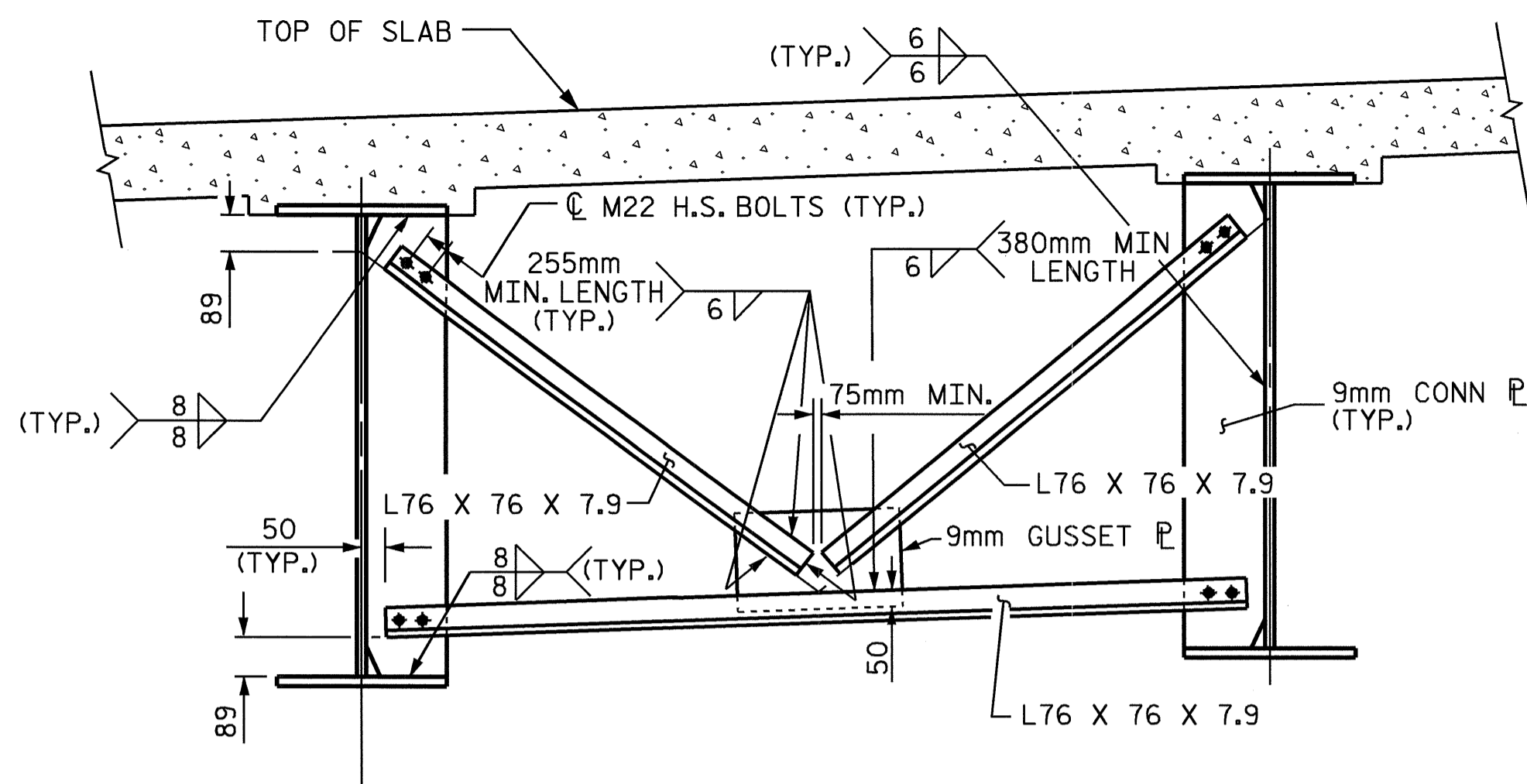
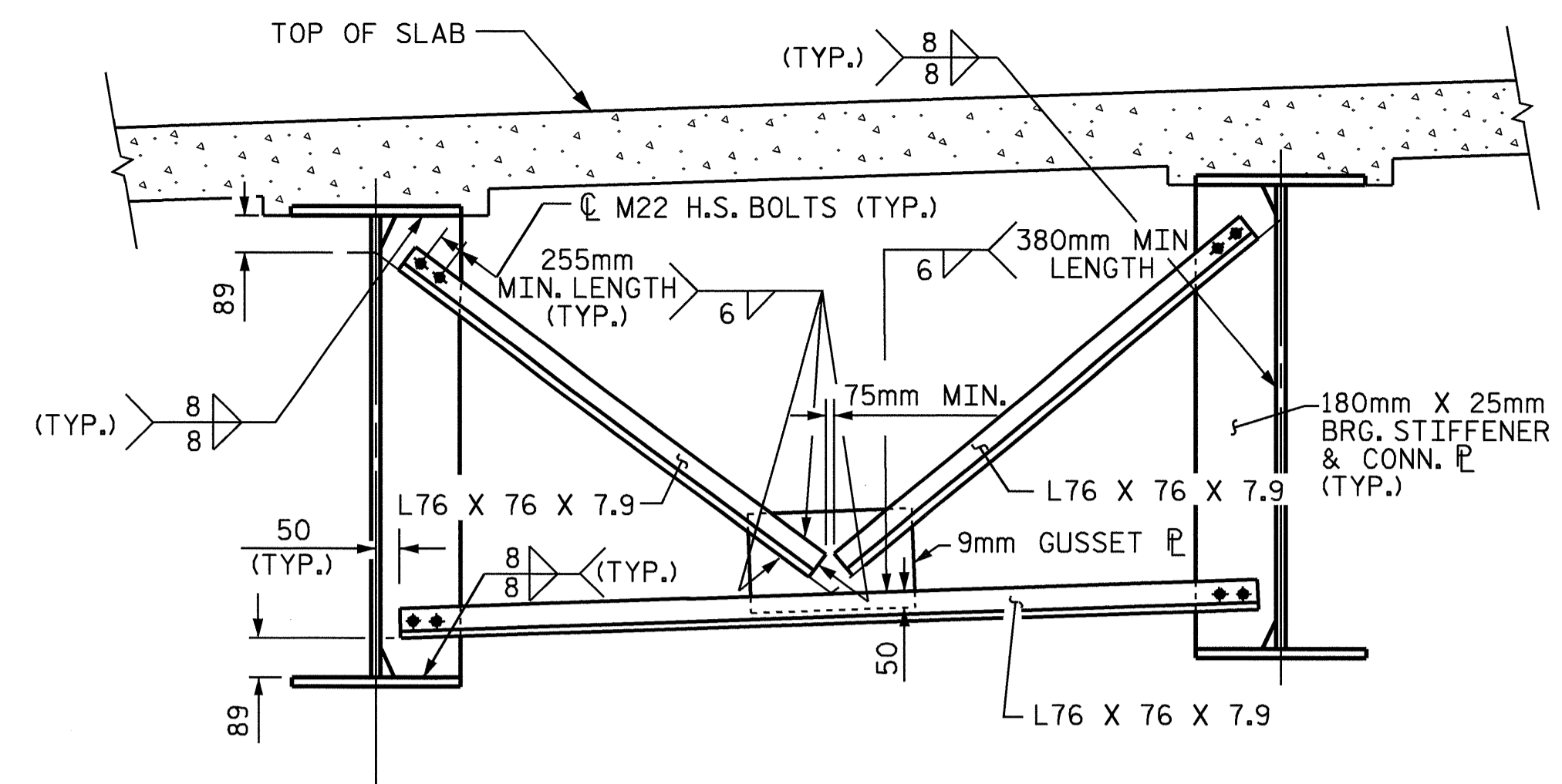


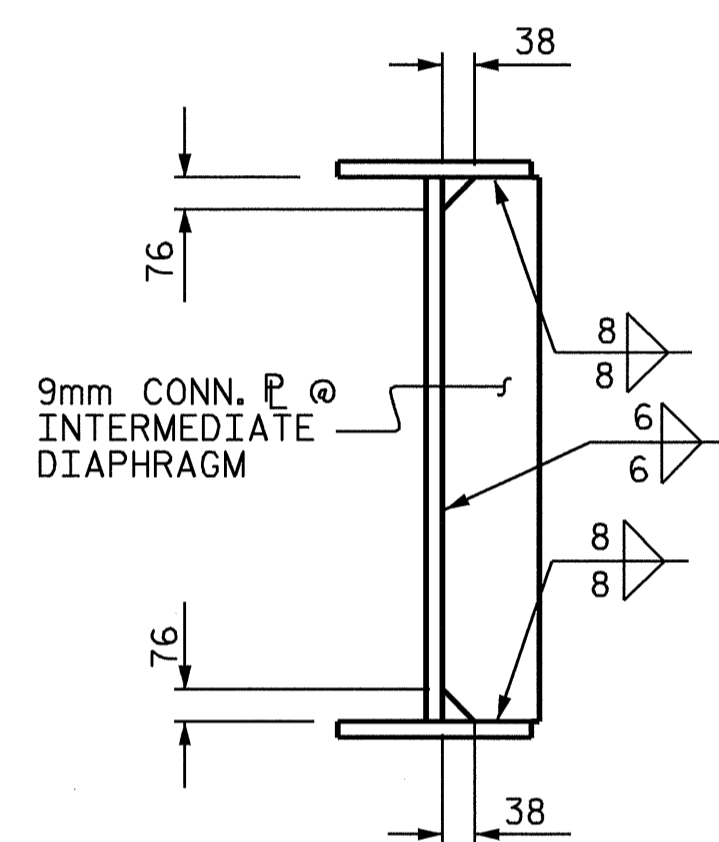
TYPICAL END BENT DIAPHRAGM (D1)



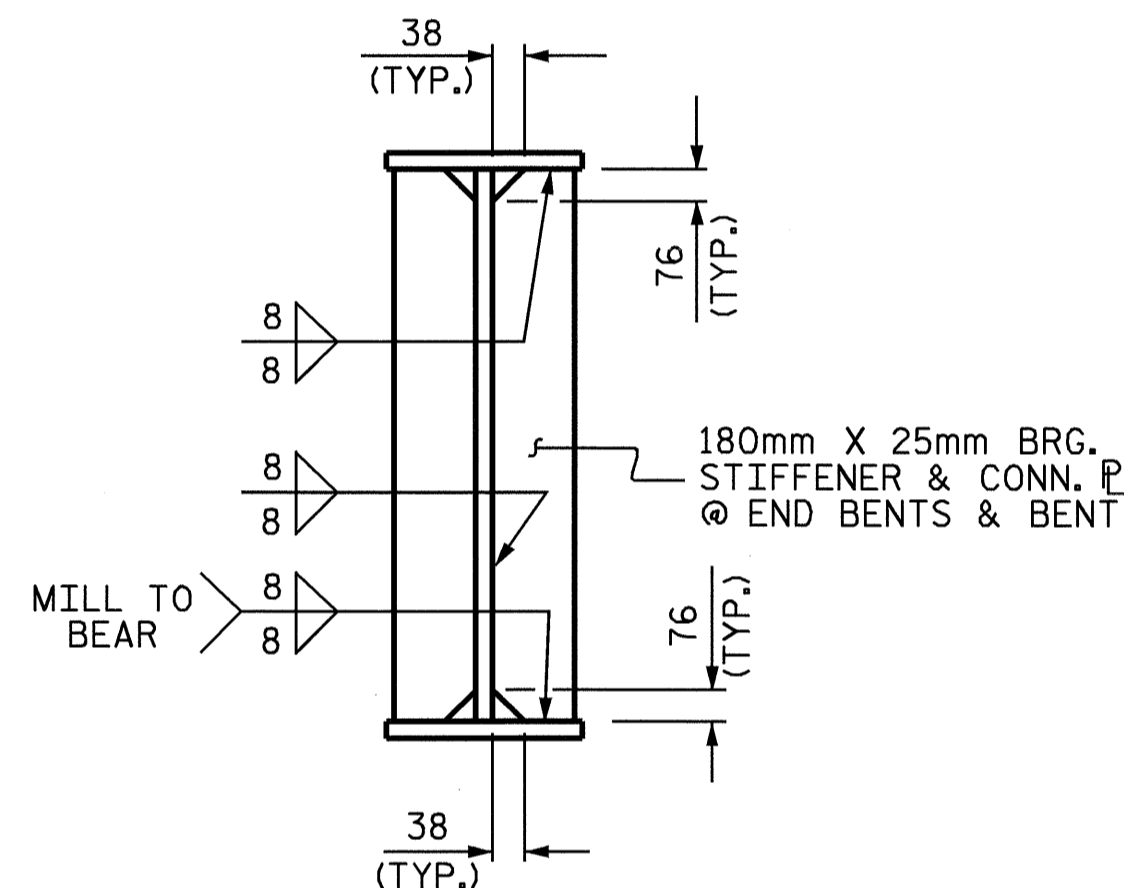
TYPICAL INTERMEDIATE DIAPHRAGM (D3)



TYPICAL BENT DIAPHRAGM (D2)

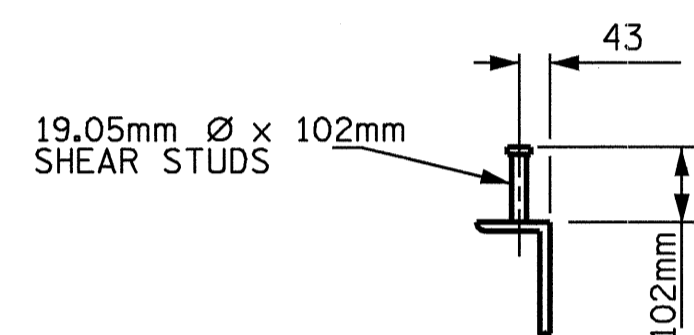


CONNECTOR PLATE

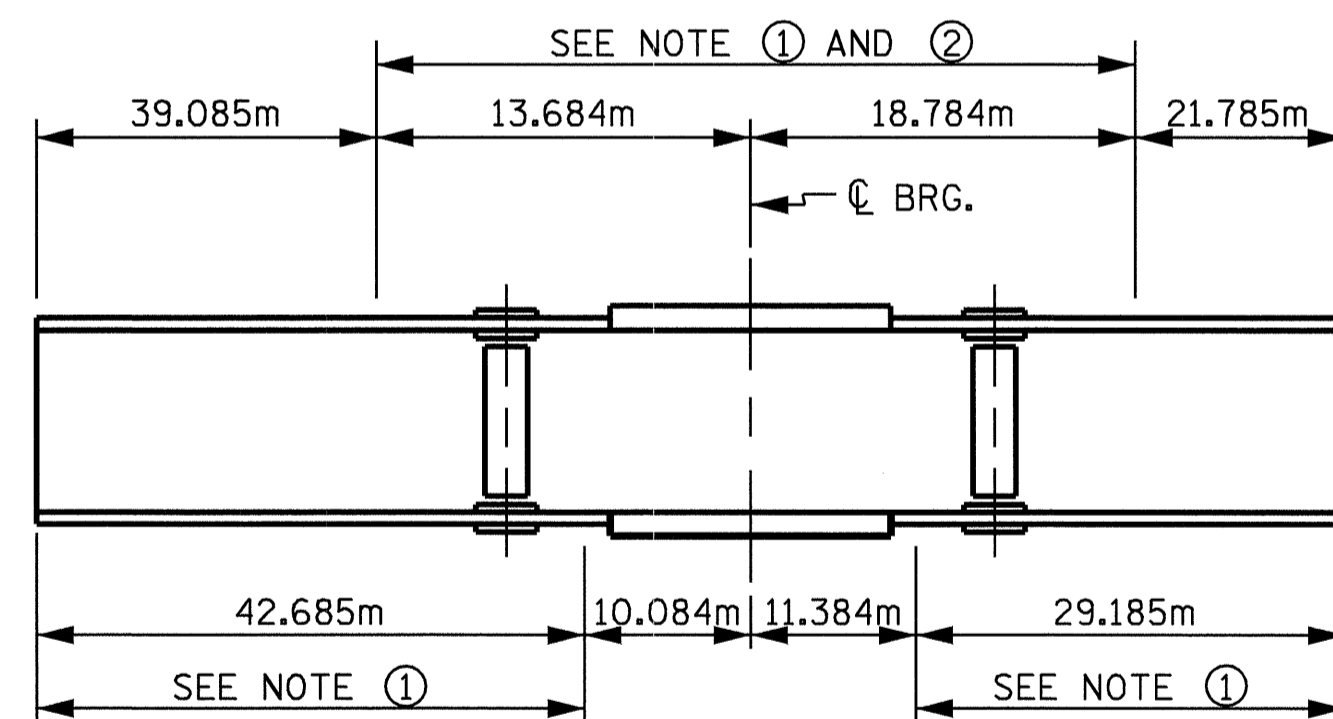


BEARING STIFFENER

BEARING STIFFENER MAY REQUIRE COPING IF STIFFENER IS WIDER THAN BOTTOM FLANGE.



SHEAR STUD DETAILS

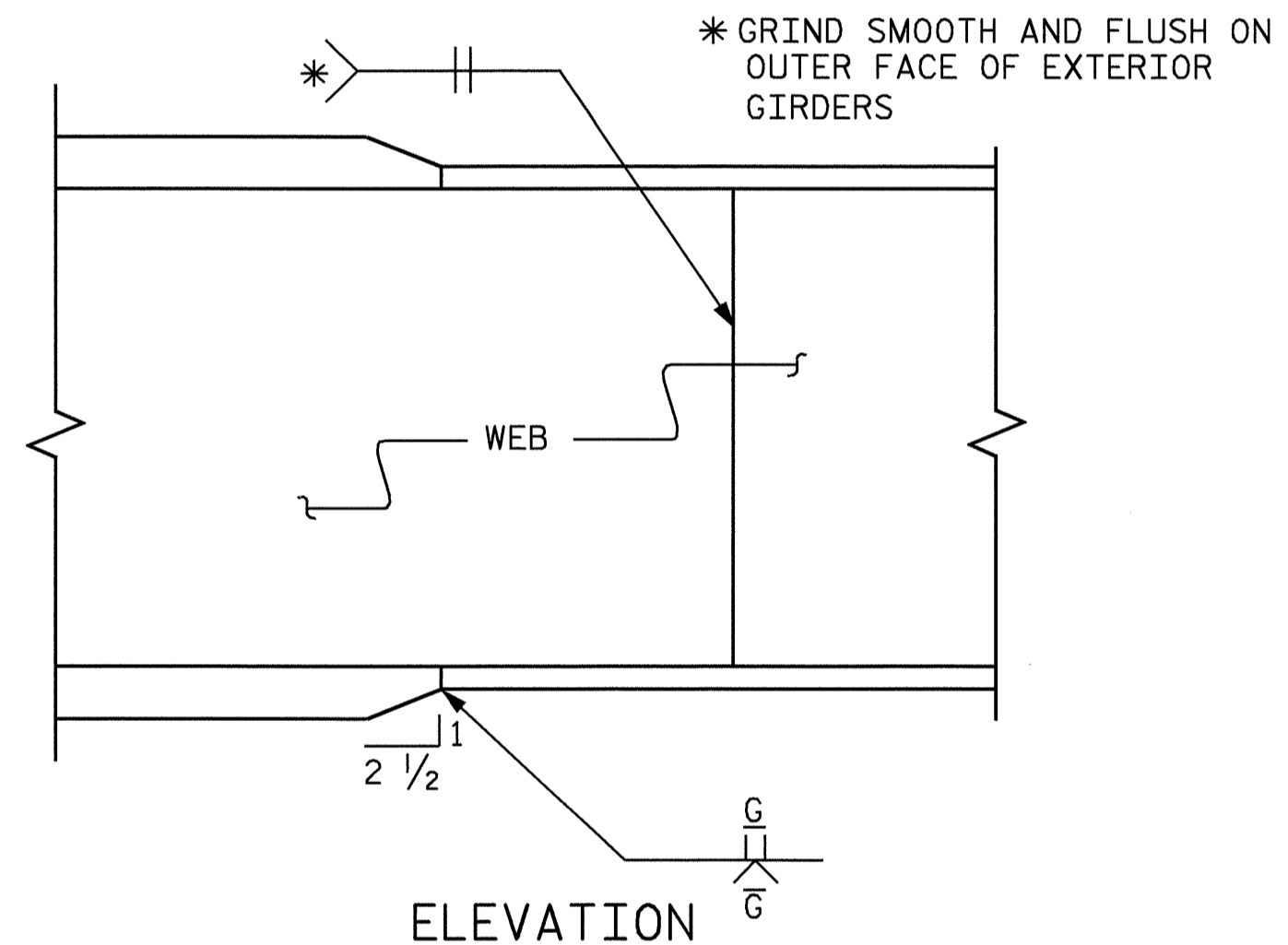


GIRDER MAKE UP

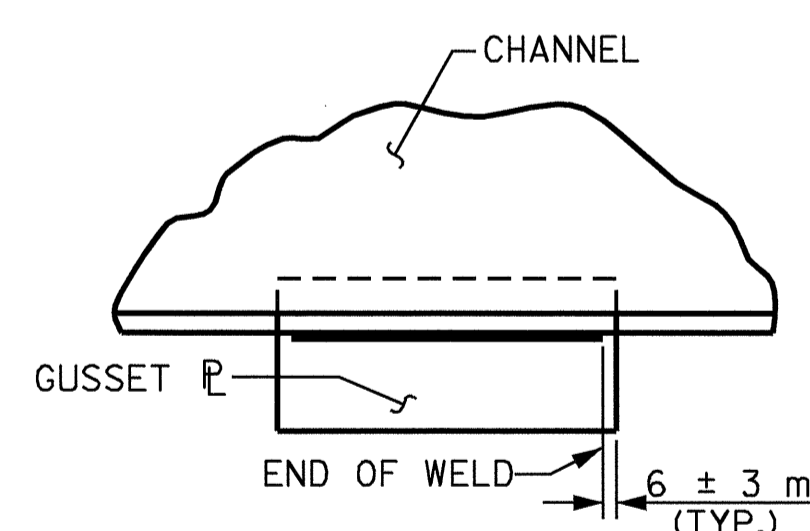
NOTE ①: CHARPY V-NOTCH TESTS ARE REQUIRED FOR ALL TOP OR BOTTOM FLANGE PLATES WHICH FALL WITHIN THESE LIMITS, ALL WEB PLATES, AND ALL SPLICE PLATES. IF A PERMITTED SHOP FLANGE SPLICE IS NOT USED, CHARPY V-NOTCH TESTS WILL BE REQUIRED FOR THE ENTIRE FLANGE PLATE. FOR CHARPY V-NOTCH TESTS, SEE ARTICLE 1072-9 OF THE STANDARD SPECIFICATIONS.

NOTE ②: NO WELDING OF FORMS OR FALSEWORK TO THE TOP FLANGE WILL BE PERMITTED IN THIS REGION.

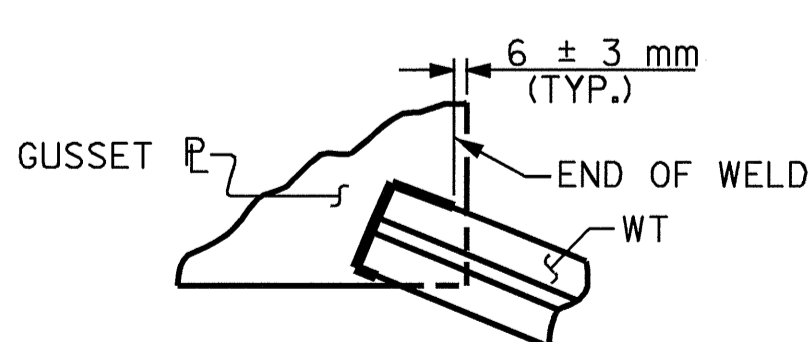
CHARPY V-NOTCH TESTS FOR CONTINUOUS PLATE GIRDERS



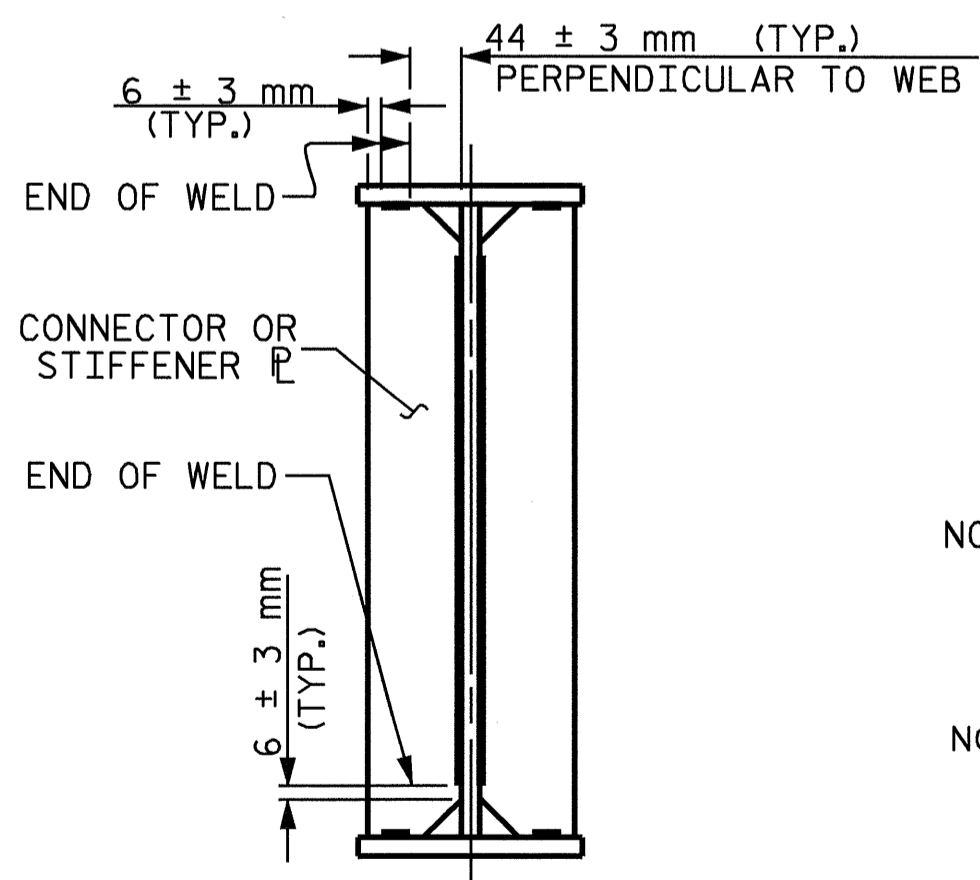
TYPICAL FLANGE AND WEB BUTT JOINT



TYPICAL GUSSET PLATE CONNECTION



TYPICAL "TEE" TO GUSSET PLATE CONNECTION



TYPICAL STIFFENER OR CONNECTOR PLATE CONNECTIONS

WELD TERMINATION DETAILS

DRAWN BY: L.L. MURPHY DATE: 01-04  
 CHECKED BY: D. HODGE DATE: 02-04

22-JUN-2004 15:33  
 W:\sdquady\2911a\Final plans\R2911A..sd..SS..01.dgn  
 clewls

PROJECT NO. R-2911A  
 IREDELL COUNTY  
 STATION: 39+62.402-L-

SHEET 2 OF 3

STATE OF NORTH CAROLINA  
 DEPARTMENT OF TRANSPORTATION  
 RALEIGH  
 SUPERSTRUCTURE  
 STRUCTURAL STEEL  
 DETAILS  
 LEFT LANE



| REVISIONS |     |       |     |     | SHEET NO. |
|-----------|-----|-------|-----|-----|-----------|
| NO.       | BY: | DATE: | NO. | BY: | DATE:     |
| 1         |     |       | 3   |     |           |
| 2         |     |       | 4   |     |           |

TOTAL SHEETS: 106

STR #1