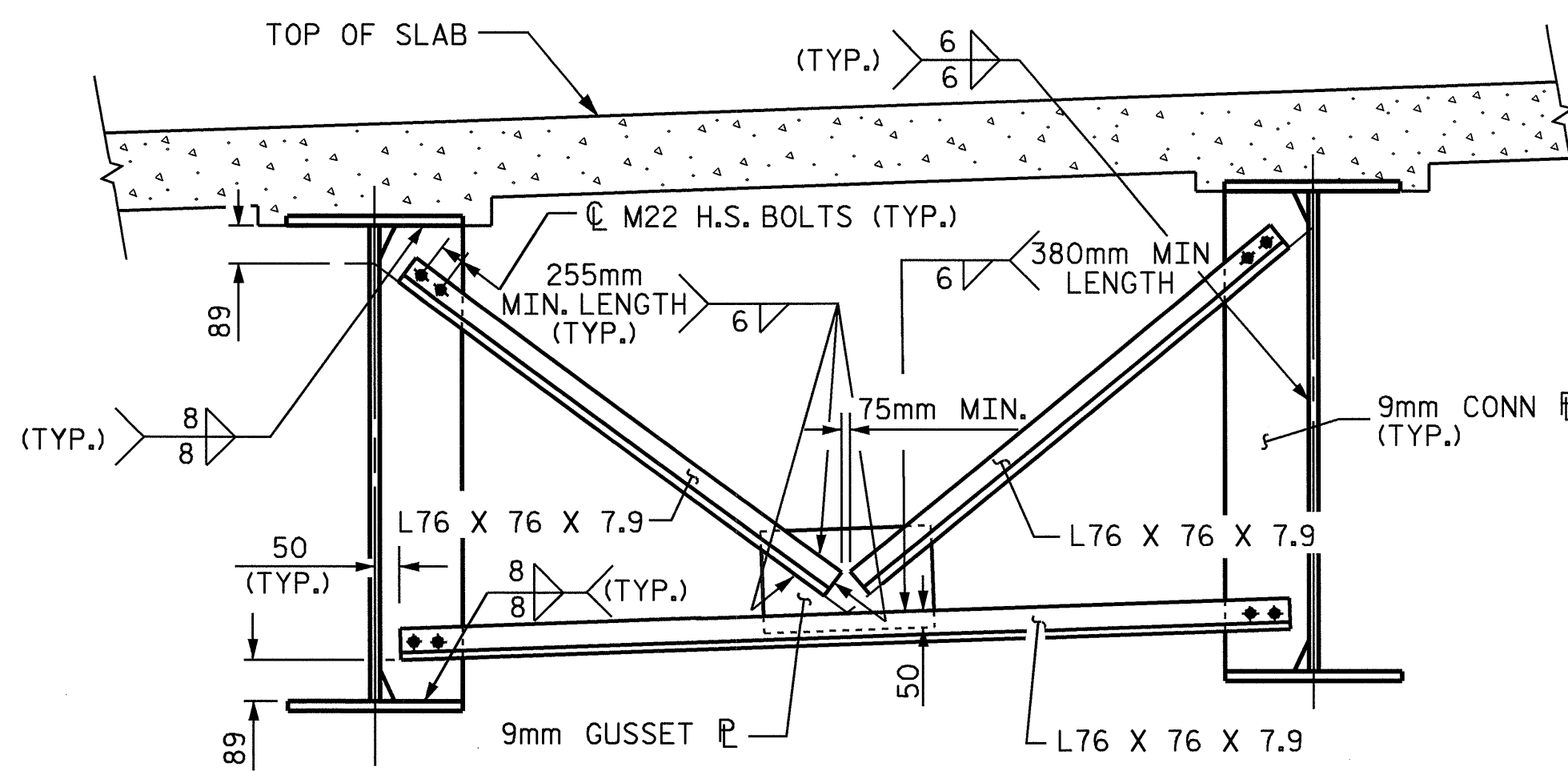
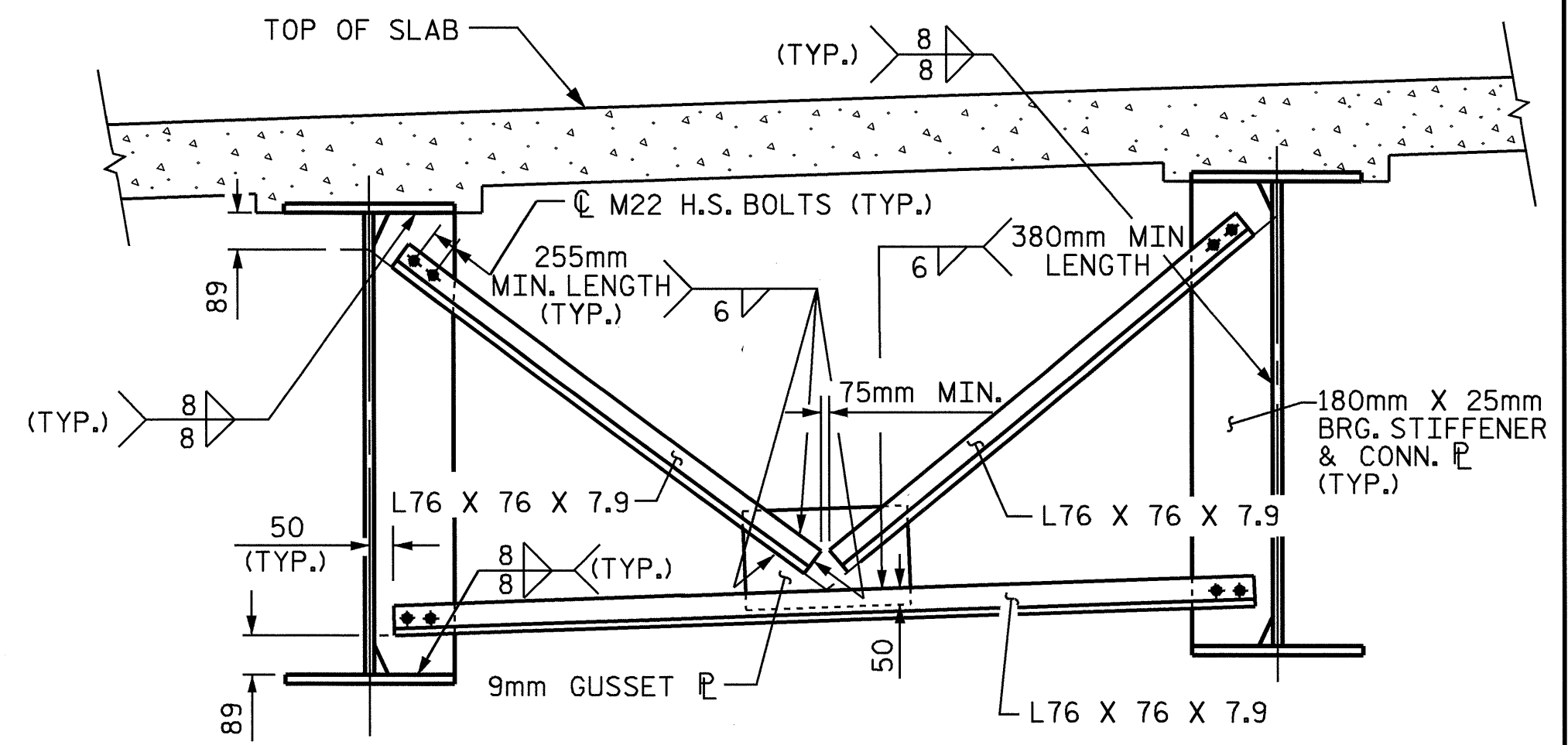


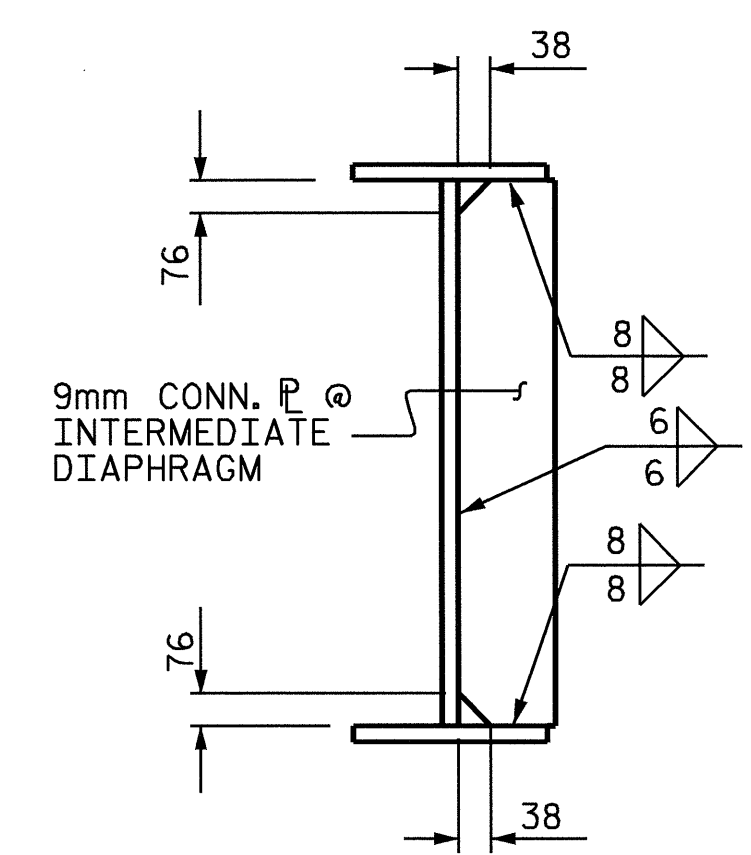
TYPICAL END BENT DIAPHRAGM (D1)



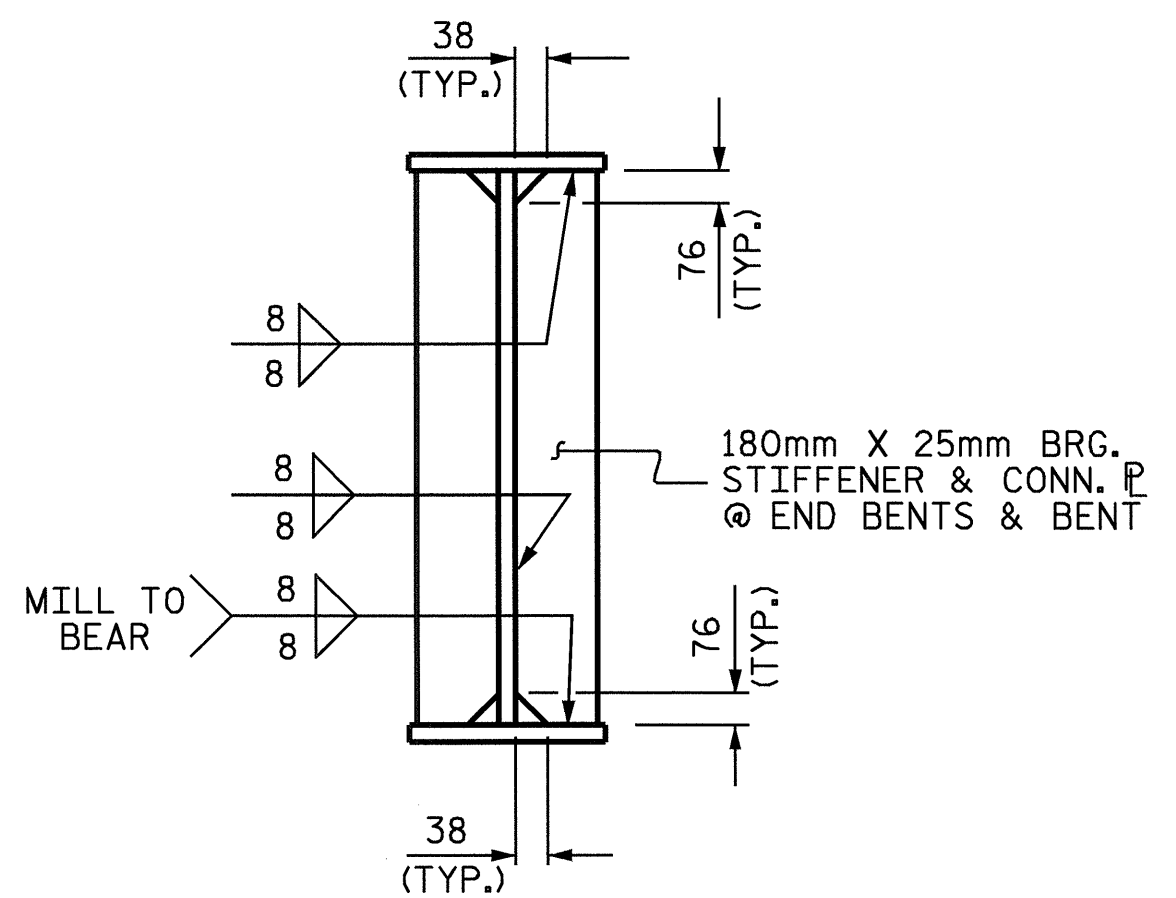
TYPICAL INTERMEDIATE DIAPHRAGM (D3)



TYPICAL BENT DIAPHRAGM (D2)

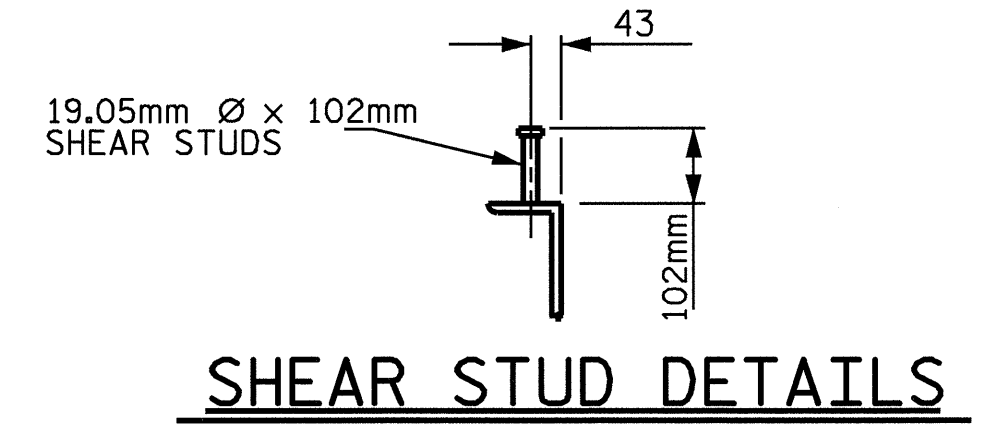


CONNECTOR PLATE

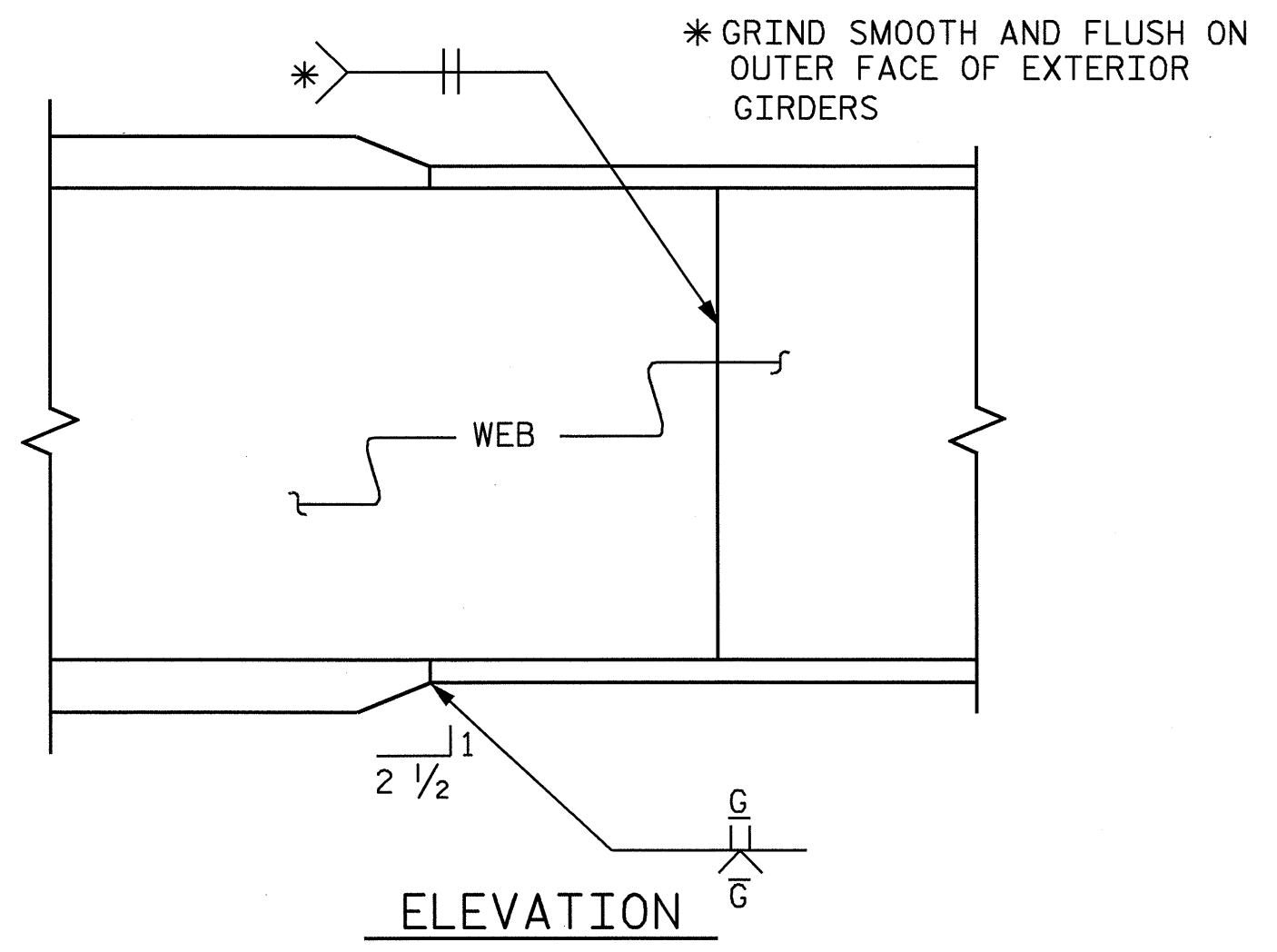


BEARING STIFFENER

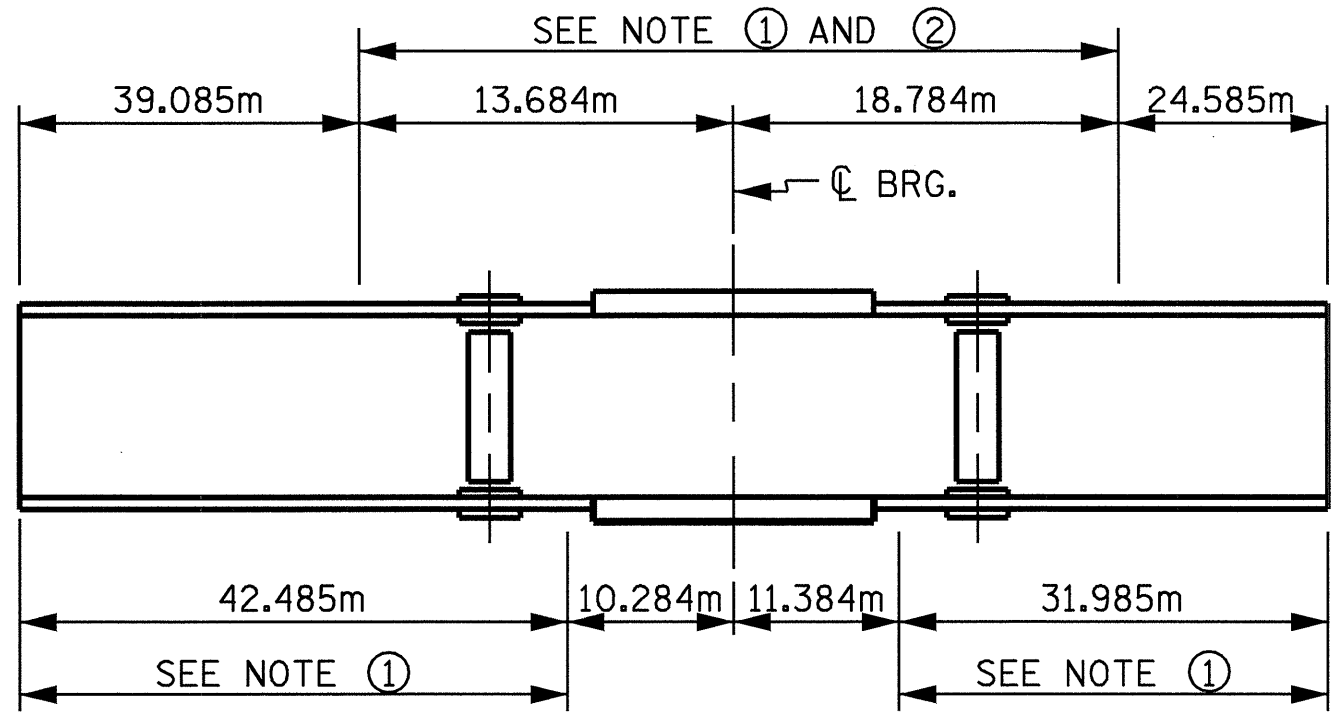
BEARING STIFFENER MAY REQUIRE COPING IF STIFFENER IS WIDER THAN BOTTOM FLANGE.



SHEAR STUD DETAILS



TYPICAL FLANGE AND WEB BUTT JOINT

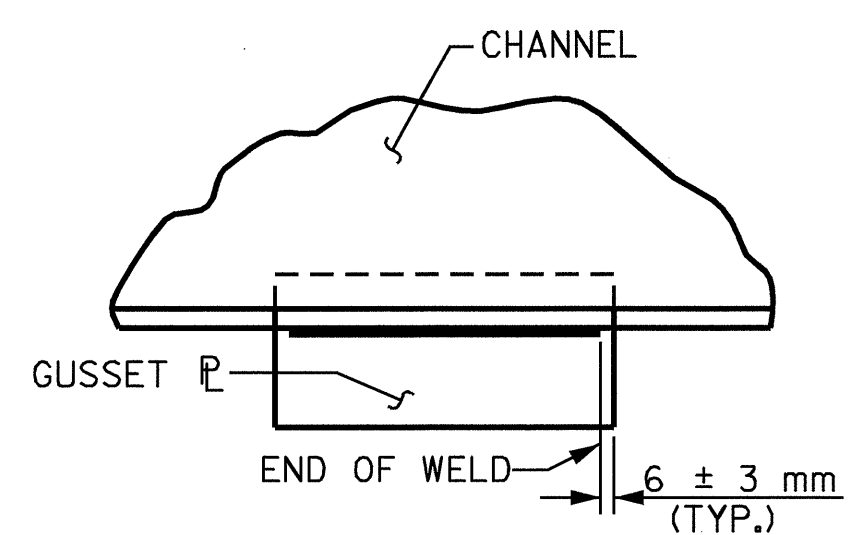


GIRDER MAKE UP

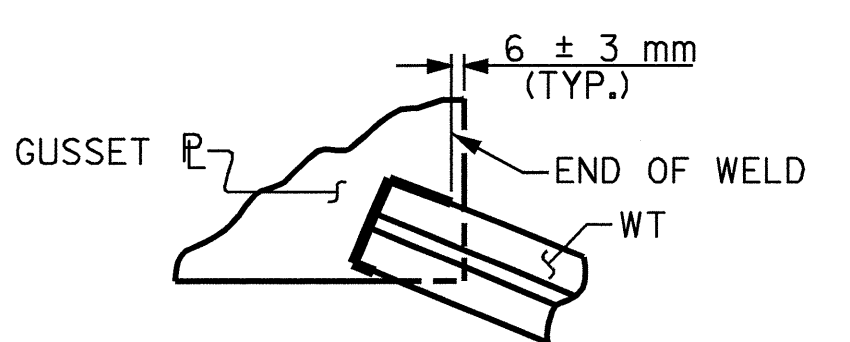
NOTE ① : CHАРY V-NOTCH TESTS ARE REQUIRED FOR ALL TOP OR BOTTOM FLANGE PLATES WHICH FALL WITHIN THESE LIMITS, ALL WEB PLATES, AND ALL SPLICE PLATES. IF A PERMITTED SHOP FLANGE SPLICE IS NOT USED, CHАРY V-NOTCH TESTS WILL BE REQUIRED FOR THE ENTIRE FLANGE PLATE. FOR CHАРY V-NOTCH TESTS, SEE ARTICLE 1072-9 OF THE STANDARD SPECIFICATIONS.

NOTE ② : NO WELDING OF FORMS OR FALSEWORK TO THE TOP FLANGE WILL BE PERMITTED IN THIS REGION.

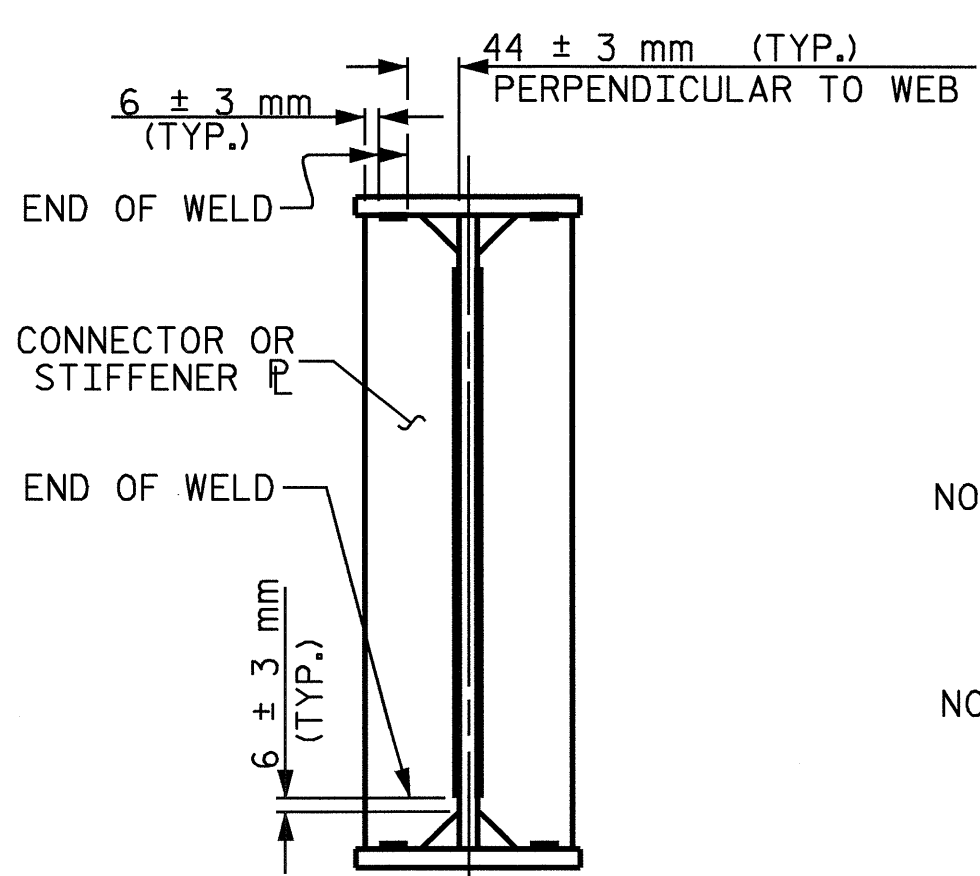
CHАРY V-NOTCH TESTS FOR CONTINUOUS PLATE GIRDERS



TYPICAL GUSSET PLATE CONNECTION



TYPICAL "TEE" TO GUSSET PLATE CONNECTION



TYPICAL STIFFENER OR CONNECTOR PLATE CONNECTIONS

WELD TERMINATION DETAILS

DRAWN BY : L.L. MURPHY DATE : 01-04
 CHECKED BY : D. HODGE DATE : 04-04

22-JUN-2004 15:35
 W:\sdquady\r2911a\Final plans\R2911A.sd_SS_02.dgn
 clewls



PROJECT NO. R-2911A
 IREDELL COUNTY
 STATION: 39+62.402-L-

SHEET 2 OF 3

STATE OF NORTH CAROLINA
 DEPARTMENT OF TRANSPORTATION
 RALEIGH
 SUPERSTRUCTURE
 STRUCTURAL STEEL
 DETAILS
 RIGHT LANE

REVISIONS				SHEET NO.	
NO.	BY:	DATE:	NO.	BY:	DATE:
1			3		
2			4		

TOTAL SHEETS: 106

STR #2