

NOTES

FOR ELASTOMERIC BEARINGS, SEE SPECIAL PROVISIONS.

THE 51mm Ø PIPE SLEEVE SHALL BE CUT FROM SCHEDULE 40 PVC PLASTIC PIPE. THE PVC PLASTIC PIPE SHALL MEET THE REQUIREMENTS OF ASTM D1785.

THE PAYMENT FOR THE PIPE SLEEVES AND 102mm Ø x 467mm STD. PIPE ASSEMBLIES SHALL BE INCLUDED IN THE SEVERAL PAY ITEMS.

FOR AASHTO M270 GRADE 345W STRUCTURAL STEEL, SOLE PLATE SHALL BE AASHTO M270 GRADE 345W AND SHALL NOT BE GALVANIZED, ANCHOR BOLTS AND NUTS SHALL BE GALVANIZED IN ACCORDANCE WITH THE STANDARD SPECIFICATIONS.

ANCHOR BOLTS SHALL MEET THE REQUIREMENTS OF ASTM A449. NUTS SHALL MEET THE REQUIREMENTS OF AASHTO M291M-12 OR AASHTO M292M-2H. WASHERS SHALL MEET THE REQUIREMENTS OF AASHTO M293M. SHOP DRAWINGS ARE NOT REQUIRED FOR ANCHOR BOLTS, NUTS AND WASHERS. SHOP INSPECTION IS REQUIRED.

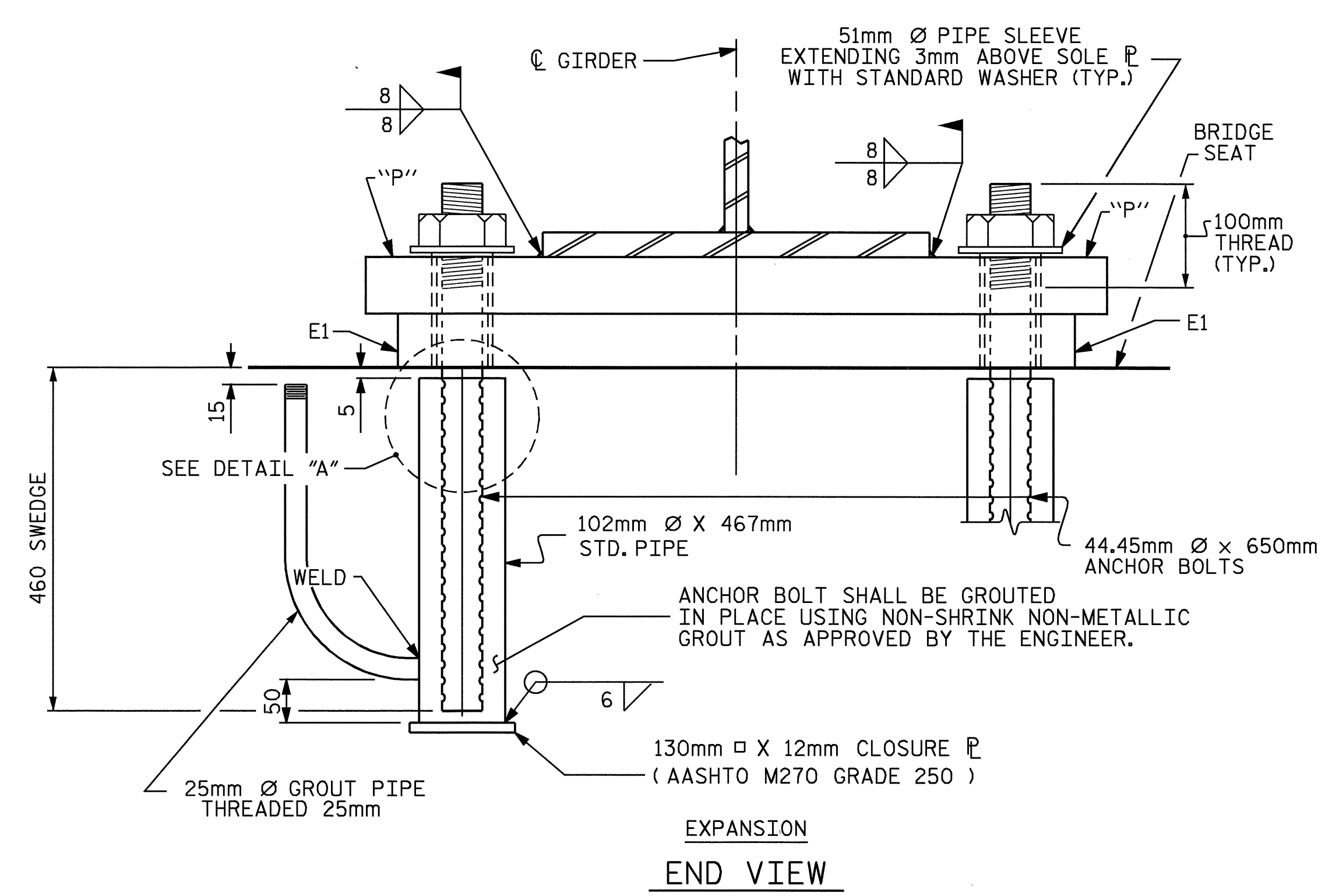
WHEN FIELD WELDING THE SOLE PLATE TO THE GIRDER FLANGE, USE TEMPERATURE INDICATING WAX PENS, OR OTHER SUITABLE MEANS, TO ENSURE THAT THE TEMPERATURE OF THE SOLE PLATE DOES NOT EXCEED 149°C. TEMPERATURES ABOVE THIS MAY DAMAGE THE ELASTOMER.

ALL SURFACES OF BEARING PLATES SHALL BE SMOOTH AND STRAIGHT.

THE CLOSURE PLATE AND STANDARD PIPE FOR EXPANSION ASSEMBLY NEED NOT BE GALVANIZED.

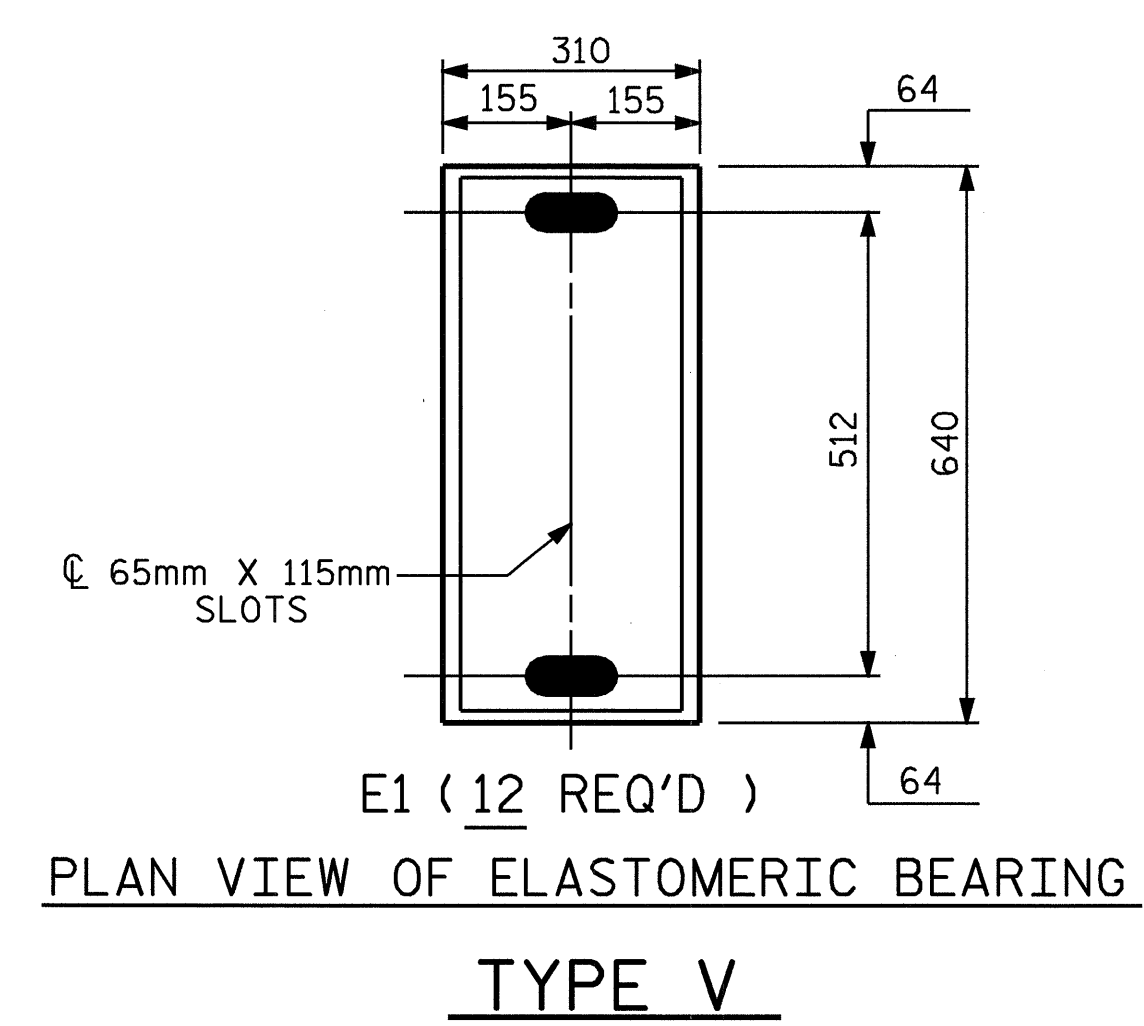
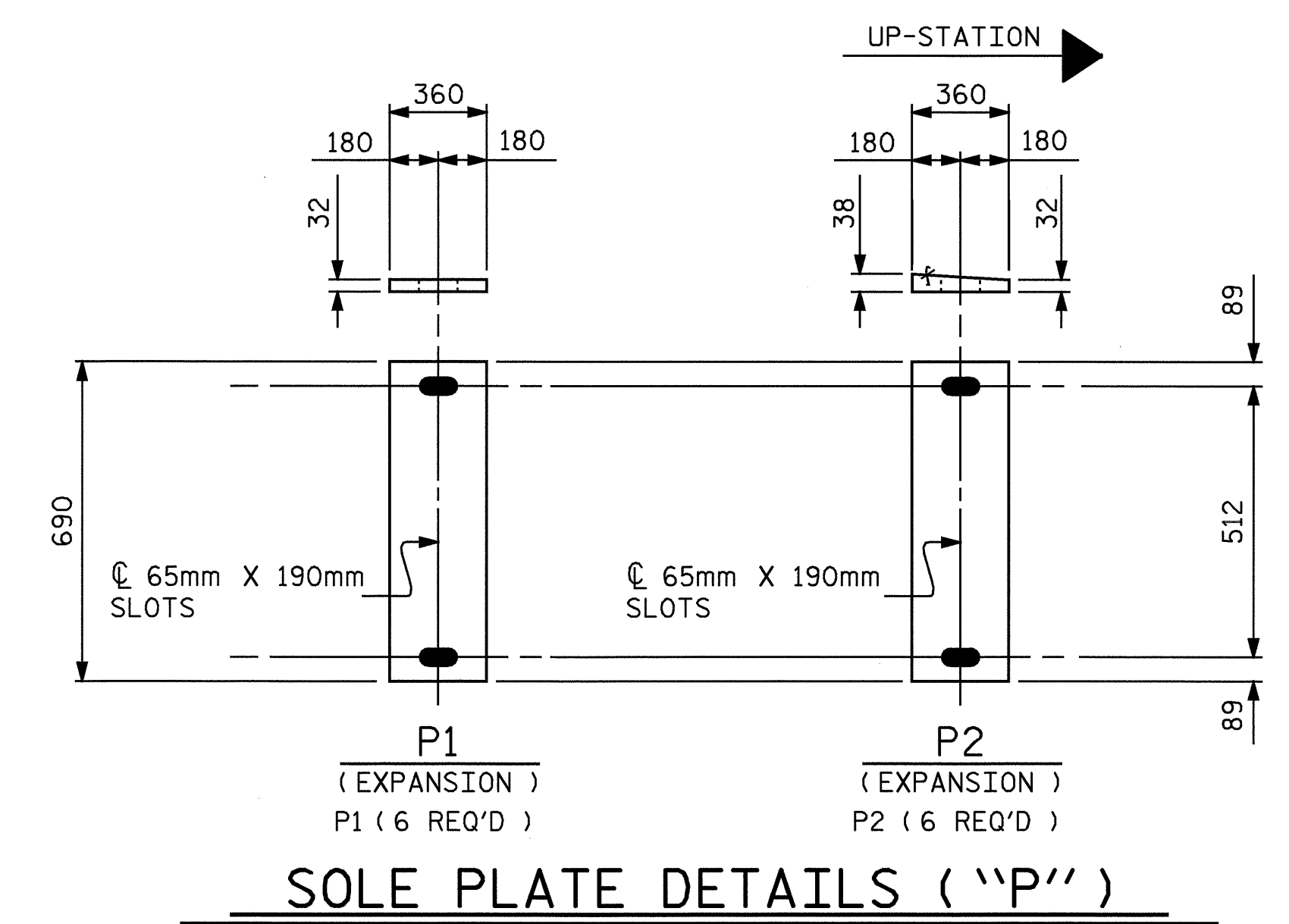
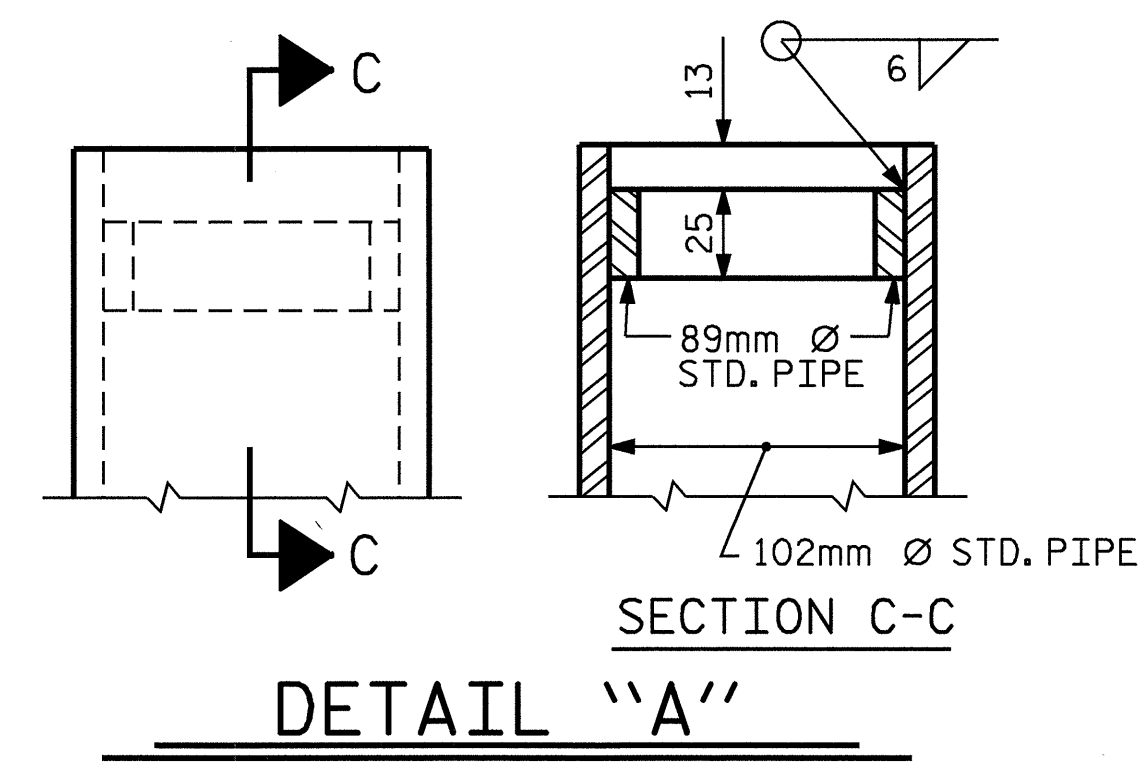
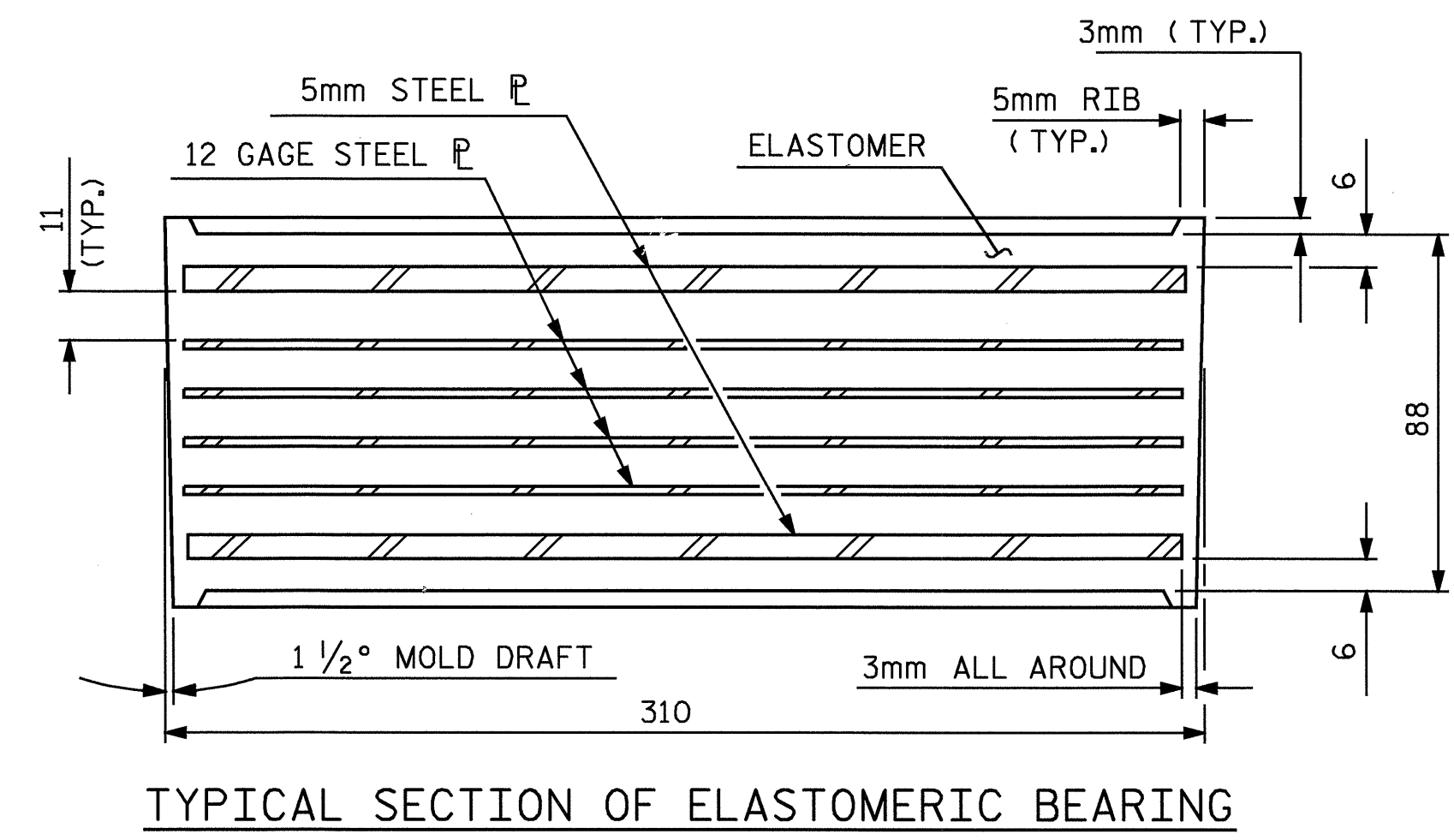
THE CONTRACTOR'S ATTENTION IS CALLED TO THE FACT THAT:

1. THE ANCHOR BOLTS SHALL BE GROUTED PRIOR TO PLACING THE FALSEWORK.
2. ONCE THE DECK HAS BEEN POURED AND HAS CURED, GIRDERS SHALL BE JACKED AND SOLE PLATES AND ELASTOMERIC BEARING SLOTS SHALL BE CENTERED ABOUT THE ANCHOR BOLTS. THIS OPERATION SHALL BE PERFORMED AT APPROXIMATELY 16°C.
3. THE SOLE PLATES SHALL BE FIELD WELDED TO THE GIRDER FLANGES.

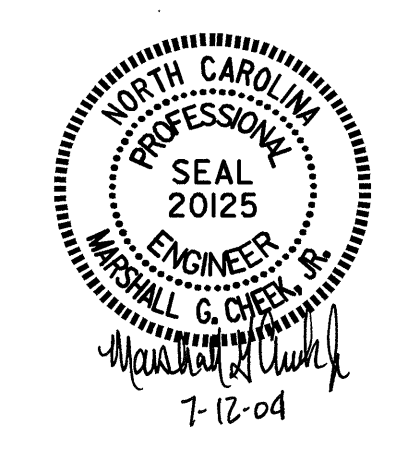


-LOAD RATINGS-

	MAX.D.L.+ L.L.
TYPE V	943 kN



PROJECT NO. R-2911A
IREDELL COUNTY
 STATION: 39+62.402-L-



STATE OF NORTH CAROLINA
 DEPARTMENT OF TRANSPORTATION
 RALEIGH
ELASTOMERIC BEARING
DETAILS
 (STEEL SUPERSTRUCTURE)
 RIGHT LANE

ASSEMBLED BY : L.L.MURPHY	DATE : 01-04
CHECKED BY : D.HODGE	DATE : 04-04
DRAWN BY : EEM 10/95	REV. 7/17/98 RWW/LES
CHECKED BY : PEK 10/95	REV. 8/16/99 MAB/LES
	REV. 10/17/00 RWW/LES

REVISIONS						SHEET NO.
NO.	BY:	DATE:	NO.	BY:	DATE:	S-42
1			3			TOTAL SHEETS
2			4			106