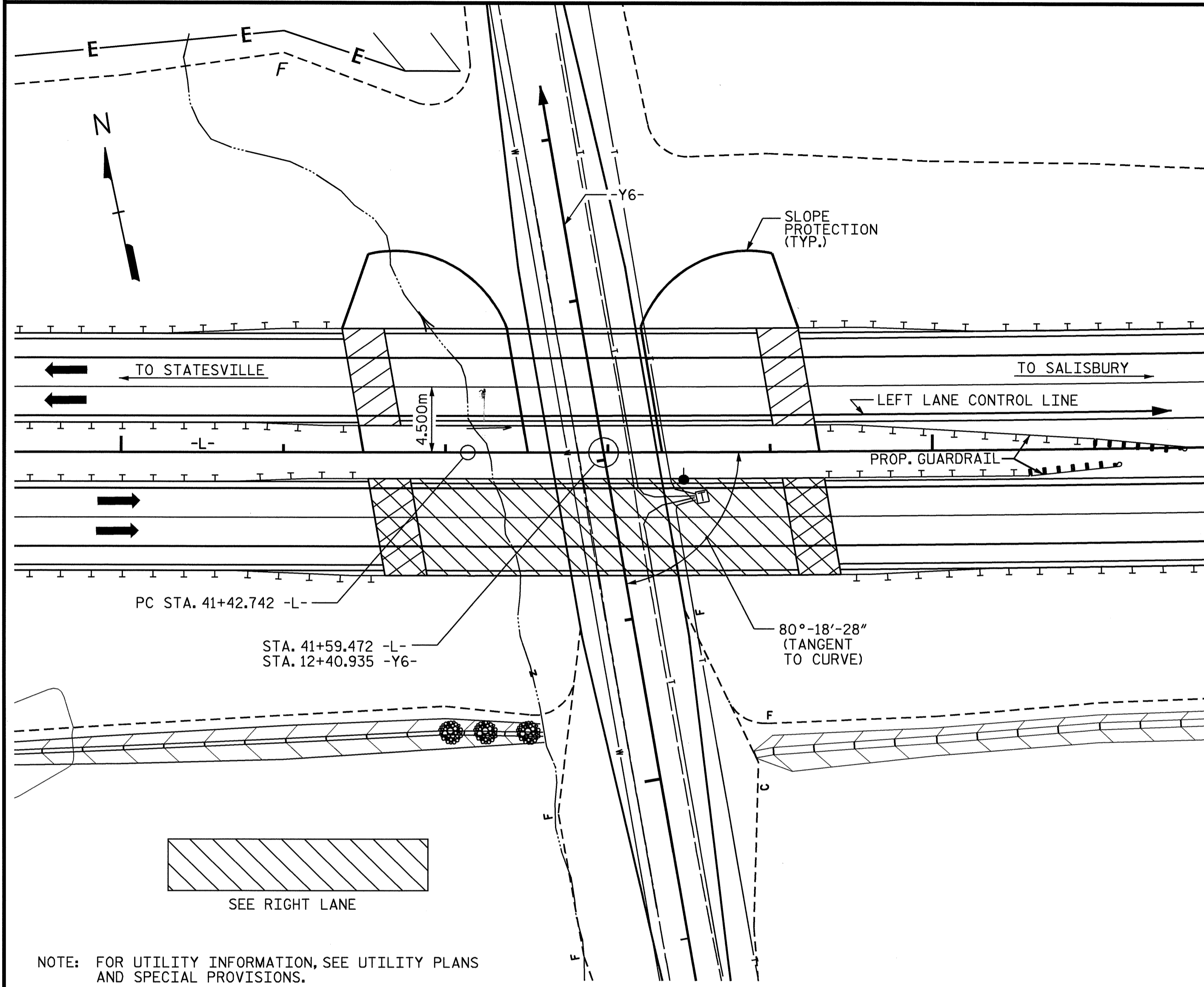


TBM8 RR SPIKE IN POWER POLE, STA. 41+20.163 -L-, 276.743m LT., EL. 256.686



LOCATION SKETCH

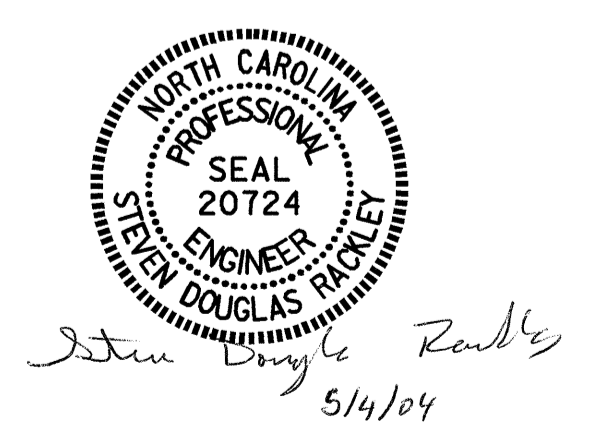
ALL DIMENSIONS ARE IN MILLIMETERS UNLESS OTHERWISE NOTED.  
 ALL ELEVATIONS ARE IN METERS.  
 ASSUMED LIVE LOAD = MS 18 OR ALTERNATE LOADING.  
 THIS BRIDGE HAS BEEN DESIGNED BY THE STRENGTH DESIGN METHOD AS SPECIFIED IN AASHTO STANDARD SPECIFICATIONS.  
 THIS BRIDGE HAS BEEN DESIGNED IN ACCORDANCE WITH THE REQUIREMENTS OF THE AASHTO STANDARD SPECIFICATIONS FOR SEISMIC DESIGN OF HIGHWAY BRIDGES FOR SEISMIC PERFORMANCE CATEGORY A.  
 FOR OTHER DESIGN DATA AND GENERAL NOTES, SEE SHEET SNSM.  
 REMOVABLE FORMS MAY BE USED IN LIEU OF METAL STAY-IN-PLACE FORMS IN ACCORDANCE WITH ARTICLE 420-3 OF THE STANDARD SPECIFICATIONS.  
 FOR MAINTENANCE AND PROTECTION OF TRAFFIC BENEATH PROPOSED STRUCTURE, SEE SPECIAL PROVISIONS.  
 THE CONTRACTOR SHALL PROVIDE INDEPENDENT ASSURANCE SAMPLES OF REINFORCING STEEL AS FOLLOWS: FOR PROJECTS REQUIRING UP TO 360,000 kg OF REINFORCING STEEL, ONE 760mm SAMPLE OF EACH SIZE BAR USED, AND FOR PROJECTS REQUIRING OVER 360,000 kg OF REINFORCING STEEL, TWO 760mm SAMPLES OF EACH SIZE BAR USED. THE BARS FROM WHICH THE SAMPLES ARE TAKEN MUST THEN BE SPICED WITH REPLACEMENT BARS OF THE SIZE AND LENGTH OF THE SAMPLE PLUS A MINIMUM LAP SPLICE OF THIRTY BAR DIAMETERS.  
 FOR FALSEWORK AND FORMS OVER OR ADJACENT TO TRAFFIC, SEE SPECIAL PROVISIONS .  
 NEEDLE BEAMS WILL NOT BE ALLOWED UNLESS OTHERWISE CALLED FOR ON THE PLANS OR APPROVED BY THE ENGINEER.  
 FOR SUBMITTAL OF WORKING DRAWINGS, SEE SPECIAL PROVISIONS.  
 FOR METRIC STRUCTURAL STEEL, SEE SPECIAL PROVISIONS.  
 FOR FALSEWORK AND FORMWORK, SEE SPECIAL PROVISIONS.  
 ALL STRUCTURAL STEEL SHALL BE AASHTO M270 GRADE 345W AND PAINTED IN ACCORDANCE WITH SYSTEM 4 OF ARTICLE 442-7 OF THE STANDARD SPECIFICATIONS UNLESS OTHERWISE NOTED ON THE PLANS.  
 FOR EROSION CONTROL MEASURES SEE EROSION CONTROL PLANS.  
 THE CLASS AA CONCRETE IN THE BRIDGE DECK SHALL CONTAIN FLY ASH OR GROUND GRANULATED BLAST FURNACE SLAG AT THE SUBSTITUTION RATE SPECIFIED IN ARTICLE 1024-1 AND IN ACCORDANCE WITH ARTICLES 1024-5 AND 1024-6 OF THE STANDARD SPECIFICATIONS. NO PAYMENT WILL BE MADE FOR THIS SUBSTITUTION AS IT IS CONSIDERED INCIDENTAL TO THE COST OF THE REINFORCED CONCRETE DECK SLAB.

TOTAL BILL OF MATERIAL

	REINFORCED CONCRETE DECK SLAB	GROOVING BRIDGE FLOORS	CLASS A CONCRETE	BRIDGE APPROACH SLABS	REINFORCING STEEL	STRUCTURAL STEEL	HP 310 X 79 STEEL PILES	CONCRETE BARRIER RAIL	100mm SLOPE PROTECTION	ELASTOMERIC BEARINGS	EVAZOTE JOINT SEALS	
	SQ. METERS	SQ. METERS	CU. METERS	LUMP SUM	kg	kg	NO.	METERS	METERS	SQ. METERS	LUMP SUM	LUMP SUM
SUPERSTRUCTURE	459.8	381.0		LUMP SUM		85,150			77.995		LUMP SUM	LUMP SUM
END BENT #1			22.2		1946		10	250	435			
END BENT #2			20.7		1970		10	285	454			
TOTAL	459.8	381.0	42.9	LUMP SUM	3916	85,150	20	535	77.995	889	LUMP SUM	LUMP SUM

PROJECT NO. R-2911A  
IREDELL COUNTY  
 STATION: 41+59.472 -L-  
12+40.935 -Y6-

SHEET 4 OF 4  
 STATE OF NORTH CAROLINA  
 DEPARTMENT OF TRANSPORTATION  
 RALEIGH  
 GENERAL DRAWING  
 FOR BRIDGE OVER SR 2527  
 ON US 70 BETWEEN SR 2318  
 AND ROWAN COUNTY LINE  
 (LEFT LANE)



DRAWN BY : J.P. ADAMS DATE : 12/11/03  
 CHECKED BY : A.R. CHESSON DATE : 2/12/04

REVISIONS						SHEET NO.
NO.	BY:	DATE:	NO.	BY:	DATE:	S-62
1			3			TOTAL SHEETS
2			4			106