

UTILITIES BY OTHERS

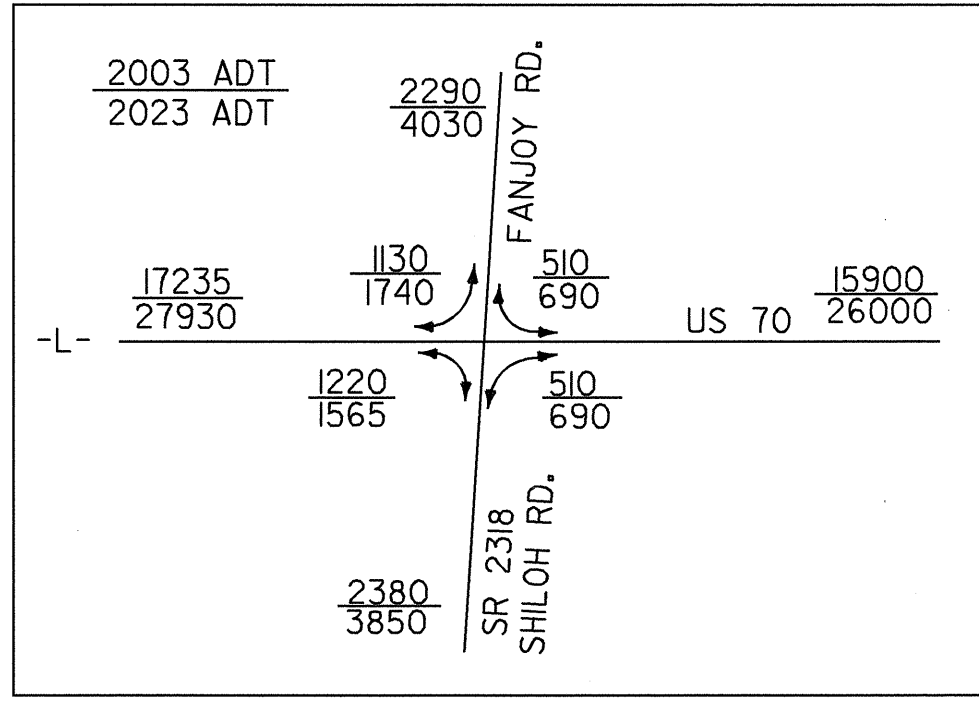
NOTE: ALL PROPOSED UTILITY WORK SHOWN ON THIS SHEET WILL BE DONE BY OTHERS

DATUM DESCRIPTION

THE LOCALIZED COORDINATE SYSTEM DEVELOPED FOR THIS PROJECT IS BASED ON THE STATE PLANE COORDINATES ESTABLISHED BY NCGS FOR MONUMENT "384-JAS" WITH NAD 83 STATE PLANE GRID COORDINATES OF NORTHING: 220871.892(m) EASTING: 459380.926(m) THE AVERAGE COMBINED GRID FACTOR USED ON THIS PROJECT (GROUND TO GRID) IS: 0.999873400 THE N.C. LAMBERT GRID BEARING LOCALIZED HORIZONTAL GROUND DISTANCE FROM "384-JAS" TO -L- POC STATION 9+97.956 IS N 76°30'57.874" W 15,290.236m ALL LINEAR DIMENSIONS ARE LOCALIZED HORIZONTAL DISTANCES VERTICAL DATUM USED IS NGVD 29

GAS LINE WILL BE ADJUSTED DURING CONSTRUCTION AS NECESSARY

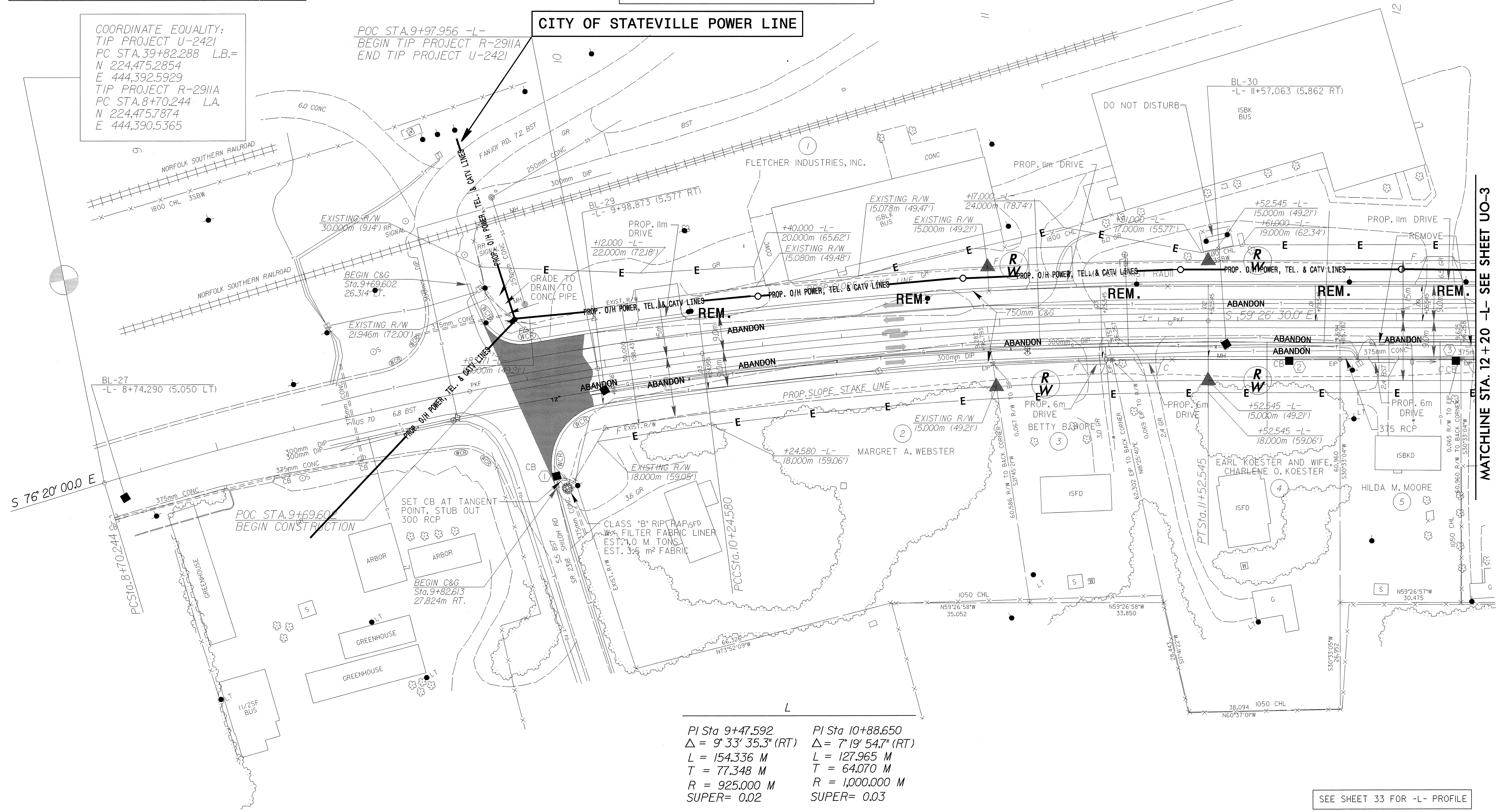
UNDER GROUND TEL. LINES WILL BE ABANDONED AND REINSTALL WITH POWER POLES.



COORDINATE EQUALITY: TIP PROJECT U-2421 PC STA. 39+82.288 L.B.= N 224,475.2854 E 444,392.5929 TIP PROJECT R-2911A PC STA. 8+70.244 L.A. N 224,475.7874 E 444,390.5365

POC STA. 9+97.956 -L- BEGIN TIP PROJECT R-2911A END TIP PROJECT U-2421

CITY OF STATEVILLE POWER LINE



MATCHLINE STA. 12 + 20 -L- SEE SHEET UO-3

PI Sta 9+47.592	PI Sta 10+88.650
$\Delta = 9^\circ 33' 35.3''$ (RT)	$\Delta = 7^\circ 19' 54.7''$ (RT)
L = 154.336 M	L = 127.965 M
T = 77.348 M	T = 64.070 M
R = 925.000 M	R = 1,000.000 M
SUPER = 0.02	SUPER = 0.03

SEE SHEET 33 FOR -L- PROFILE