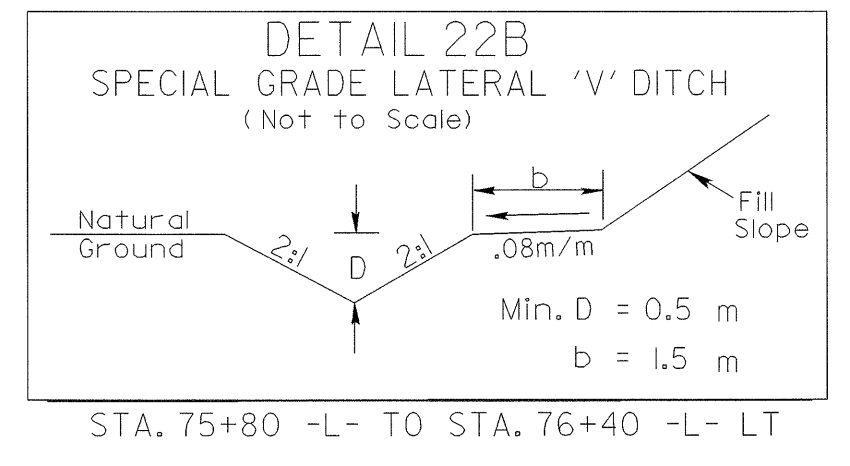
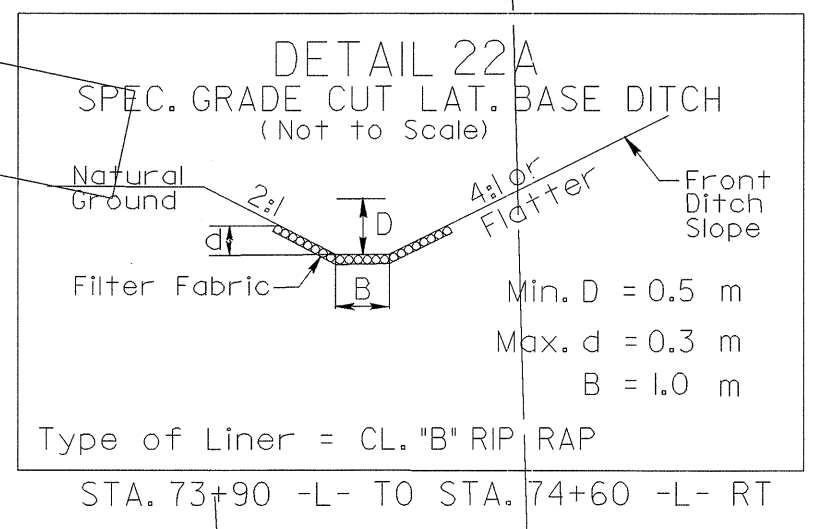
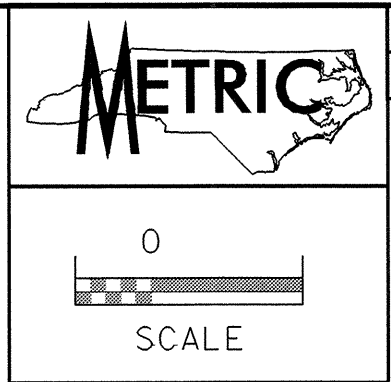


UTILITIES BY OTHERS

NOTE:
ALL PROPOSED UTILITY WORK
SHOWN ON THIS SHEET WILL
BE DONE BY OTHERS

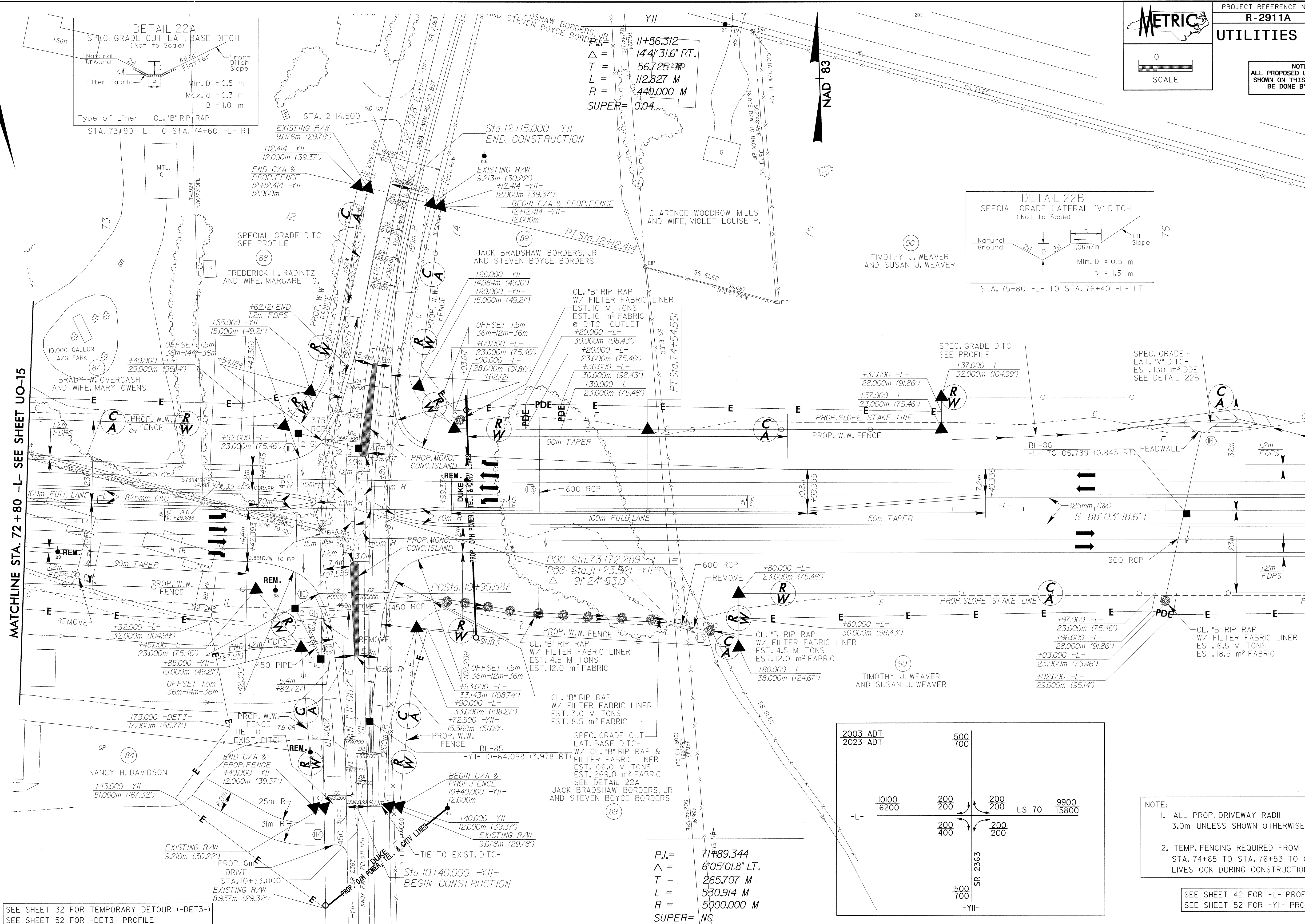


YII
11+56.312
 $\Delta = 14^\circ 31.6' RT.$
 $T = 56.725 M$
 $L = 112.827 M$
 $R = 440.000 M$
SUPER = 0.04

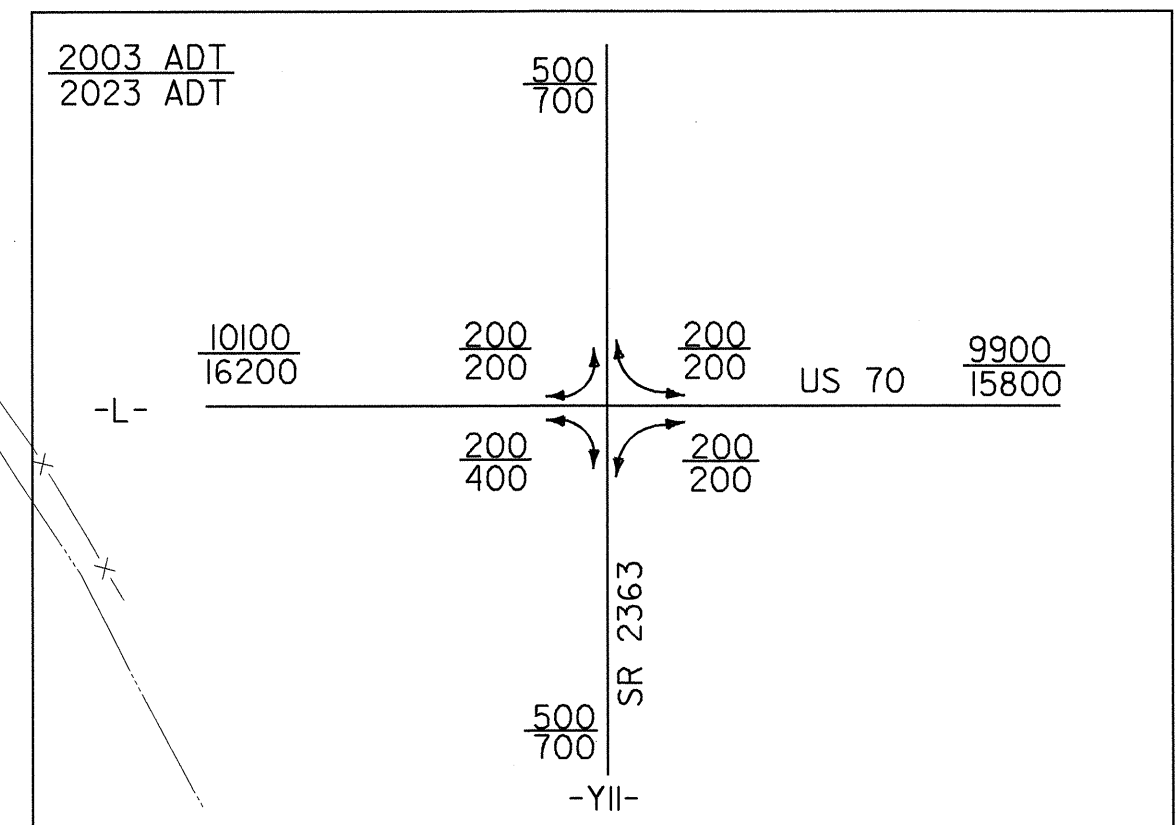


MATCHLINE STA. 72 + 80 -L- SEE SHEET UO-15

MATCHLINE STA. 76 + 40 -L- SEE SHEET UO-17



P.I. = 71#89.344
 $\Delta = 6^\circ 05' 01.8" LT.$
 $T = 265.707 M$
 $L = 530.914 M$
 $R = 5000.000 M$
SUPER = NC



NOTE:
1. ALL PROP. DRIVEWAY RADII
3.0m UNLESS SHOWN OTHERWISE.
2. TEMP. FENCING REQUIRED FROM
STA. 74+65 TO STA. 76+53 TO CONTAIN
LIVESTOCK DURING CONSTRUCTION.

SEE SHEET 32 FOR TEMPORARY DETOUR (-DET3-)
SEE SHEET 52 FOR -DET3- PROFILE

SEE SHEET 42 FOR -L- PROFILE
SEE SHEET 52 FOR -YII- PROFILE

042597
R:\172-JAN-2004-1049-P-06-1\AR2911A22-U016.DGN
J:\AR2911A22-U016.DGN