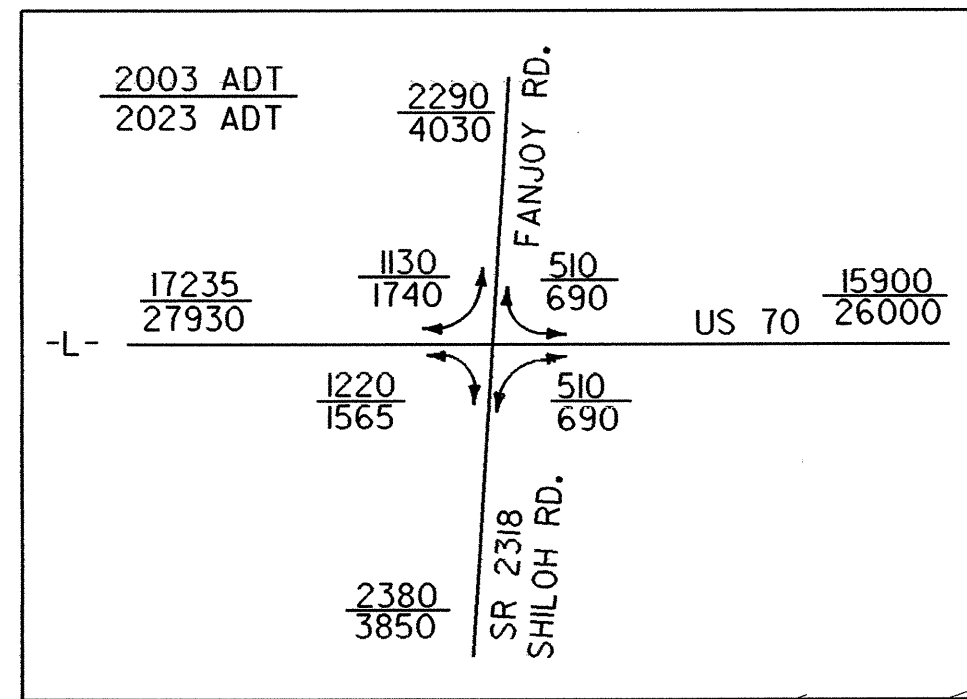


**DATUM DESCRIPTION**

THE LOCALIZED COORDINATE SYSTEM DEVELOPED FOR THIS PROJECT IS BASED ON THE STATE PLANE COORDINATES ESTABLISHED BY NCBS FOR MONUMENT "384-JAS" WITH NAD 83 STATE PLANE GRID COORDINATES OF NORTHING: 220871.892(m) EASTING: 459380.926(m) THE AVERAGE COMBINED GRID FACTOR USED ON THIS PROJECT (GROUND TO GRID) IS: 0.999873400 THE N.C. LAMBERT GRID BEARING LOCALIZED HORIZONTAL GROUND DISTANCE FROM "384-JAS" TO -L- POC STATION 9+97.956 IS N 76°30'57.874" W 15,290.236m ALL LINEAR DIMENSIONS ARE LOCALIZED HORIZONTAL DISTANCES VERTICAL DATUM USED IS NGVD 29

**COORDINATE EQUALITY:**  
 TIP PROJECT U-2421  
 PC STA. 39+82.288 -L-  
 N 224,475.2854  
 E 444,392.5929  
 TIP PROJECT R-2911A  
 PC STA. 8+70.244 -L-  
 N 224,475.7874  
 E 444,390.5365

POC STA. 9+97.956 -L-  
 BEGIN TIP PROJECT R-2911A  
 END TIP PROJECT U-2421



**NOTE:** PLACE TEMPORARY ROCK SEDIMENT DAMS TYPE-B AND TEMPORARY ROCK SILT CHECKS TYPE-A AT DRAINAGE OUTLETS.

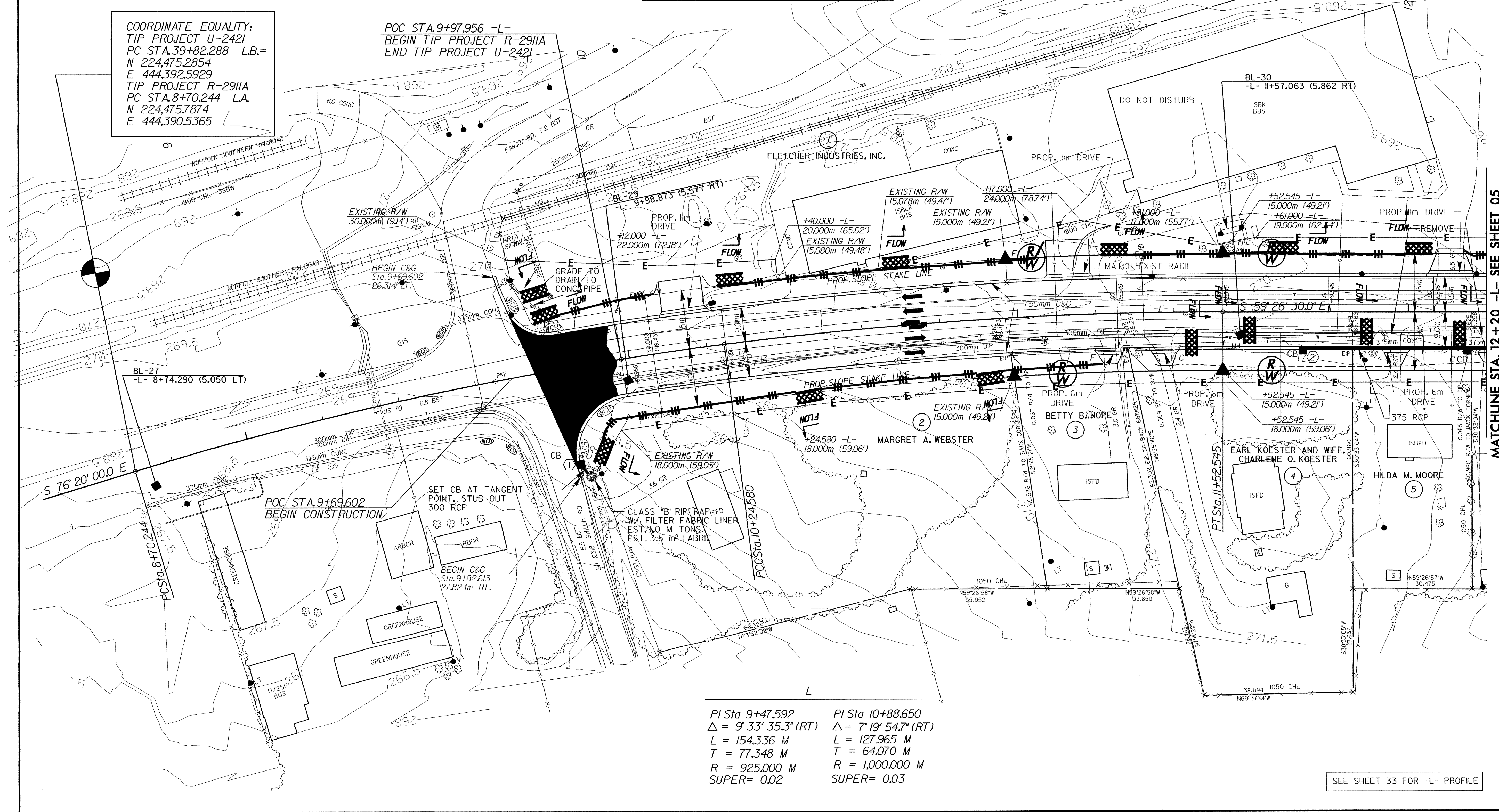
CLEARING AND GRUBBING EROSION CONTROL FOR CONSTRUCTION SHEET 4



CONST. REV.

R / W REV.

PROJECT REFERENCE NO. R-2911A	SHEET NO. EC-3/CONST. 4
R/W SHEET NO.	
ROADWAY DESIGN ENGINEER	HYDRAULICS ENGINEER



PI Sta 9+47.592	PI Sta 10+88.650
$\Delta = 9' 33' 35.3''$ (RT)	$\Delta = 7' 19' 54.7''$ (RT)
L = 154.336 M	L = 127.965 M
T = 77.348 M	T = 64.070 M
R = 925.000 M	R = 1,000.000 M
SUPER = 0.02	SUPER = 0.03

SEE SHEET 33 FOR -L- PROFILE

MATCHLINE STA. 12+20 -L- SEE SHEET 05