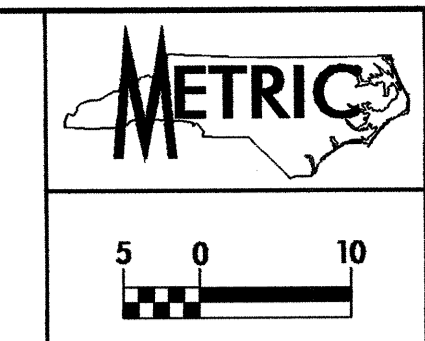


PROJECT REFERENCE NO.		SHEET NO.	
R-2911A		EC-37/CONST.9	
R/W SHEET NO.			
ROADWAY DESIGN ENGINEER		HYDRAULICS ENGINEER	
CONST. REV.		R/W REV.	

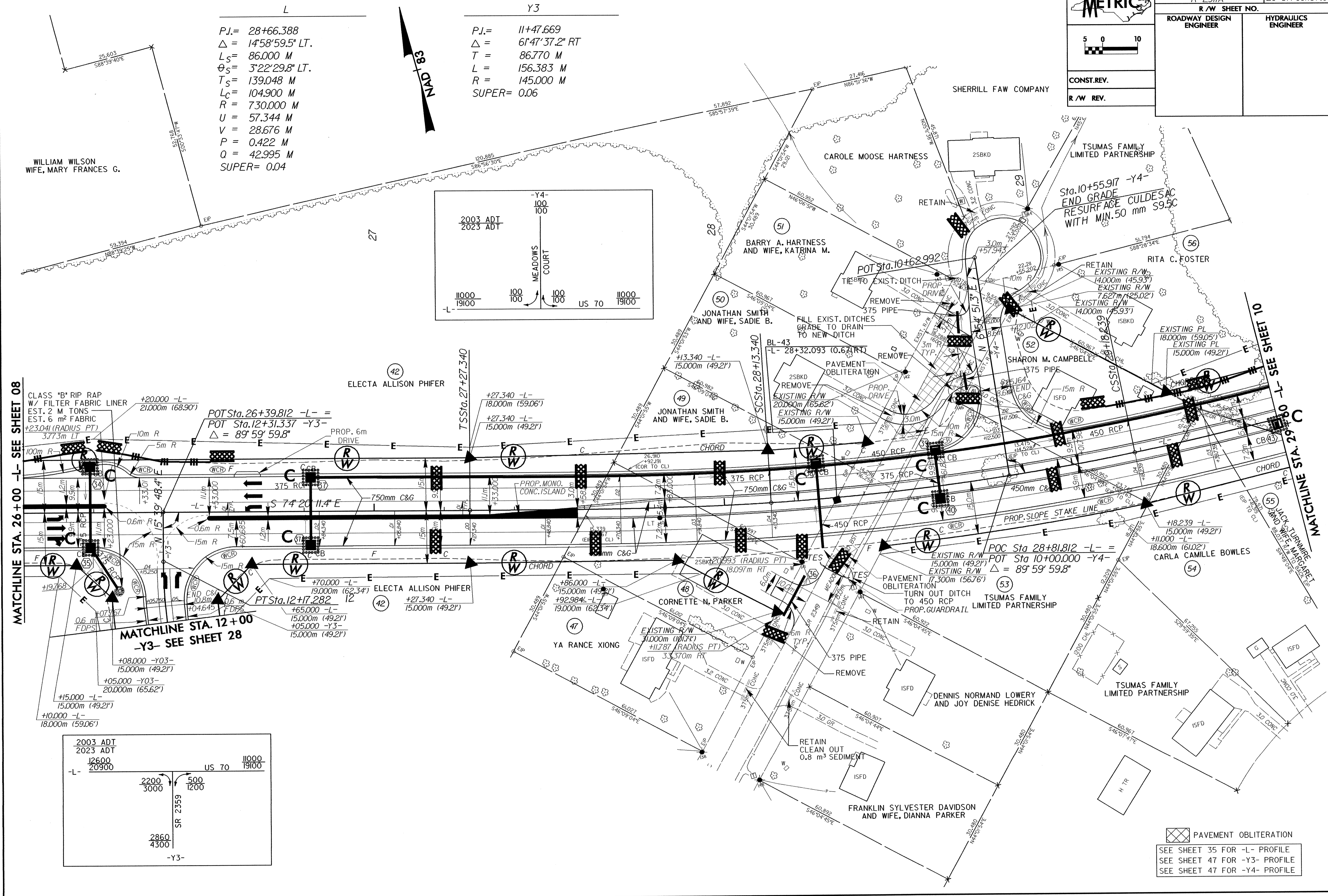


L

P.I. = 28+66.388
 $\Delta = 14^{\circ}58'59.5''$ LT.
 $L_s = 86.000$ M
 $\theta_s = 3^{\circ}22'29.8''$ LT.
 $T_s = 139.048$ M
 $L_c = 104.900$ M
 $R = 730.000$ M
 $U = 57.344$ M
 $V = 28.676$ M
 $P = 0.422$ M
 $Q = 42.995$ M
 SUPER = 0.04

Y3

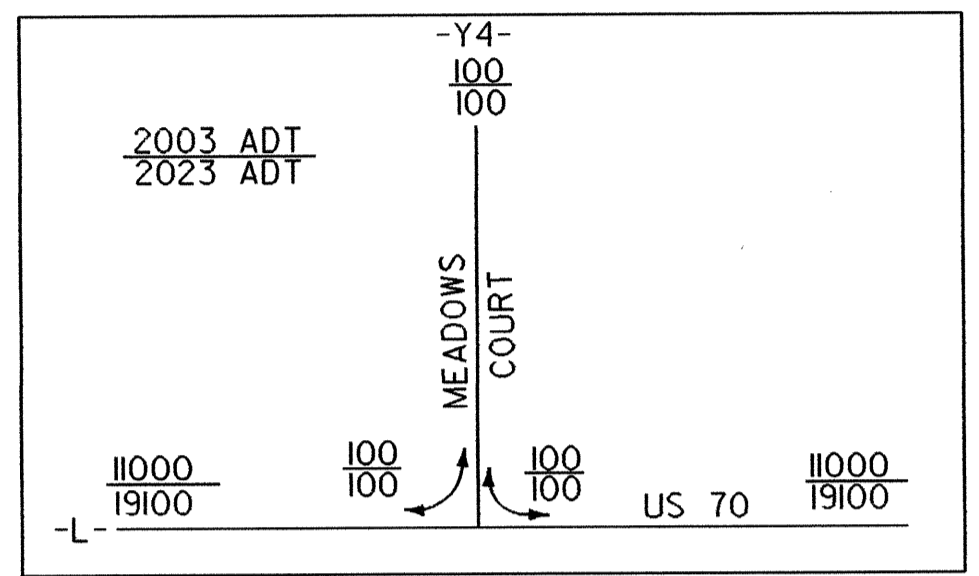
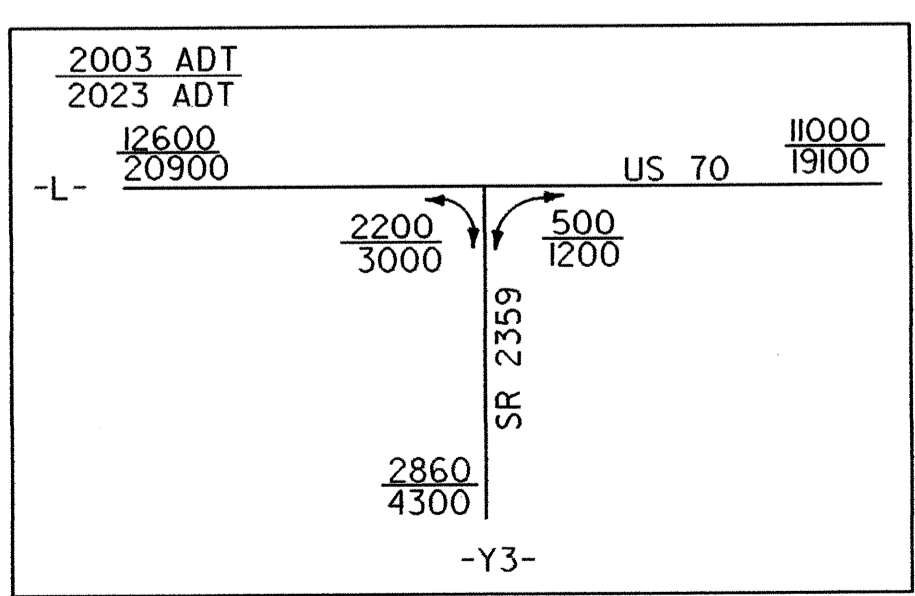
P.I. = 11+47.669
 $\Delta = 61^{\circ}47'37.2''$ RT
 $T = 86.770$ M
 $L = 156.383$ M
 $R = 145.000$ M
 SUPER = 0.06



MATCHLINE STA. 26+00 -L- SEE SHEET 08

MATCHLINE STA. 12+00 -Y3- SEE SHEET 28

MATCHLINE STA. 29+00 -L- SEE SHEET 10



PAVEMENT OBLITERATION
 SEE SHEET 35 FOR -L- PROFILE
 SEE SHEET 47 FOR -Y3- PROFILE
 SEE SHEET 47 FOR -Y4- PROFILE