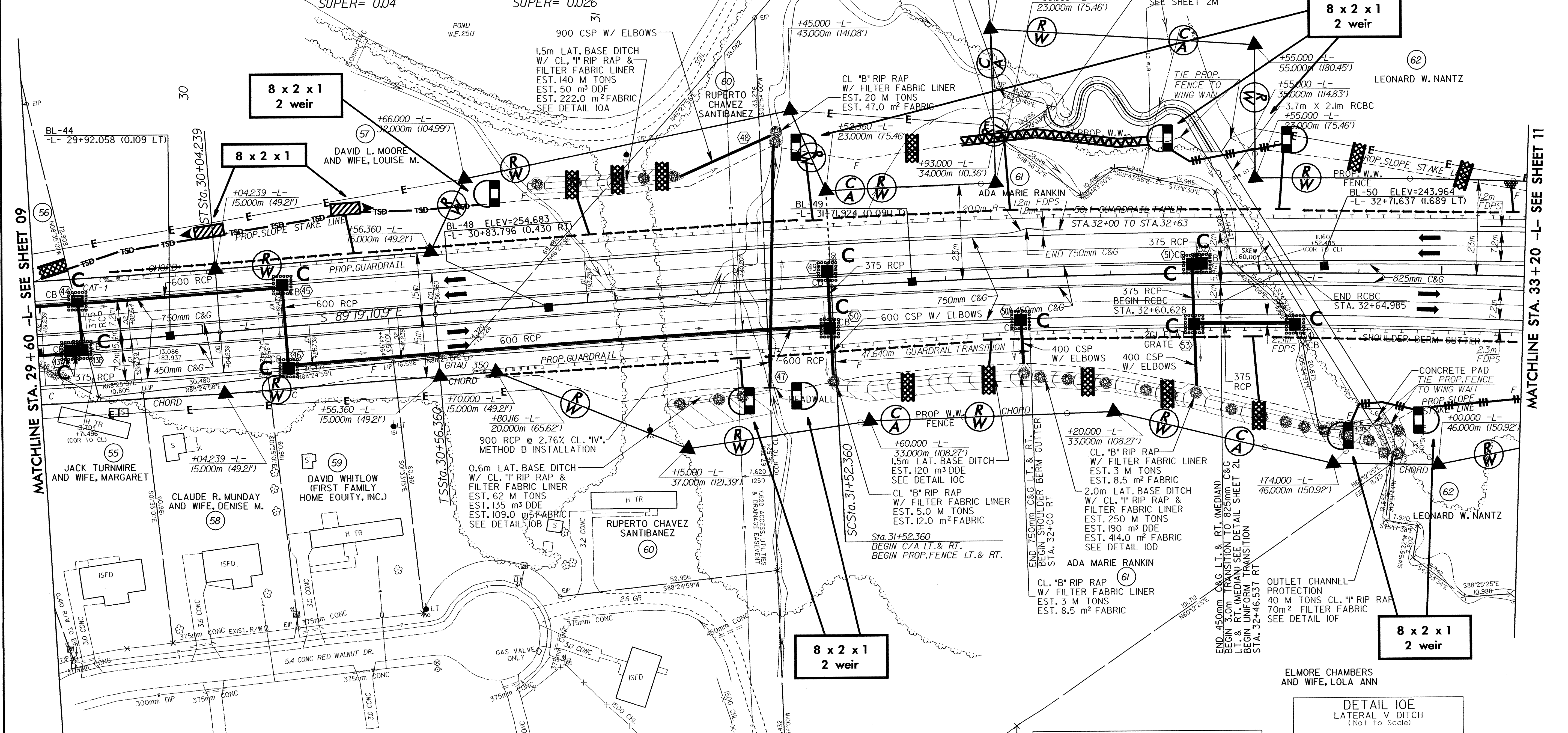


L

P.J. = 28+66.388
Δ = 14°58'59.5" LT.
L_S = 86.000 M
θ_S = 3°22'29.8" LT.
T_S = 139.048 M
L_C = 104.900 M
R = 730.000 M
U = 57.344 M
V = 28.676 M
P = 0.422 M
Q = 42.995 M
SUPER = 0.04

L

P.J. = 32+94.211
Δ = 10°50'39.1" RT.
L_S = 96.000 M
θ_S = 1°22'30.4" RT.
T_S = 237.851 M
L_C = 282.534 M
R = 2000.000 M
U = 64.002 M
V = 32.002 M
P = 0.192 M
Q = 47.999 M
SUPER = 0.026



MATCHLINE STA. 29+60 -L- SEE SHEET 09

MATCHLINE STA. 33+20 -L- SEE SHEET 11

