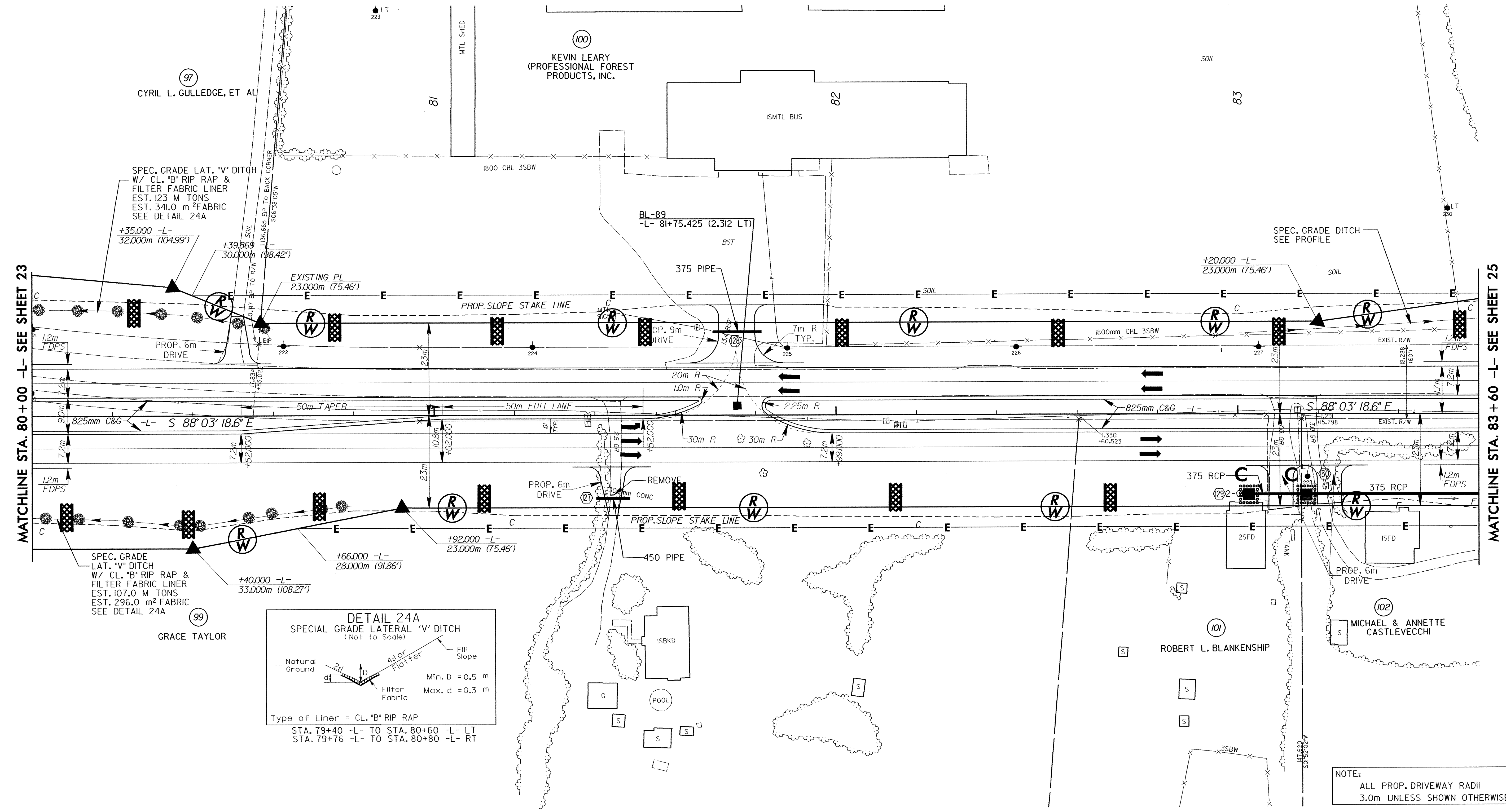


PROJECT REFERENCE NO.		SHEET NO.	
R-2911A		EC-52/CONST. 24	
R/W SHEET NO.			
ROADWAY DESIGN ENGINEER		HYDRAULICS ENGINEER	
CONST. REV.			
R/W REV.			

NAD 83



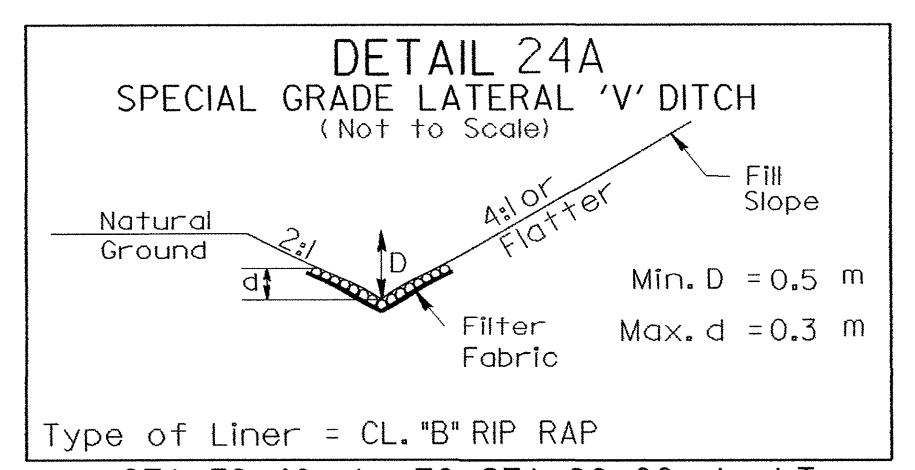
MATCHLINE STA. 80+00 -L- SEE SHEET 23

MATCHLINE STA. 83+60 -L- SEE SHEET 25

SPEC. GRADE LAT. "V" DITCH
W/ CL. "B" RIP RAP &
FILTER FABRIC LINER
EST. 123 M TONS
EST. 341.0 m² FABRIC
SEE DETAIL 24A

SPEC. GRADE DITCH
SEE PROFILE

SPEC. GRADE
LAT. "V" DITCH
W/ CL. "B" RIP RAP &
FILTER FABRIC LINER
EST. 107.0 M TONS
EST. 296.0 m² FABRIC
SEE DETAIL 24A



NOTE:
ALL PROP. DRIVEWAY RADII
3.0m UNLESS SHOWN OTHERWISE.

SEE SHEET 43 FOR -L- PROFILE