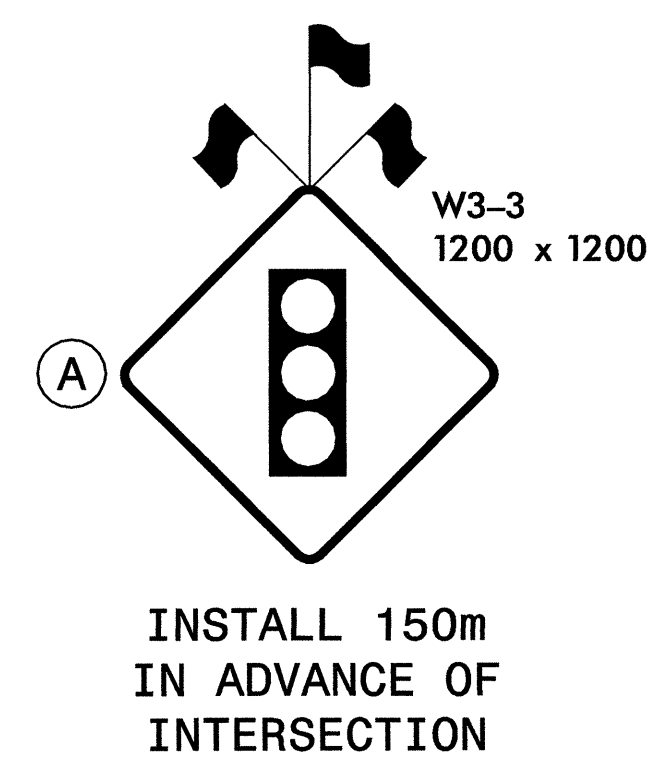
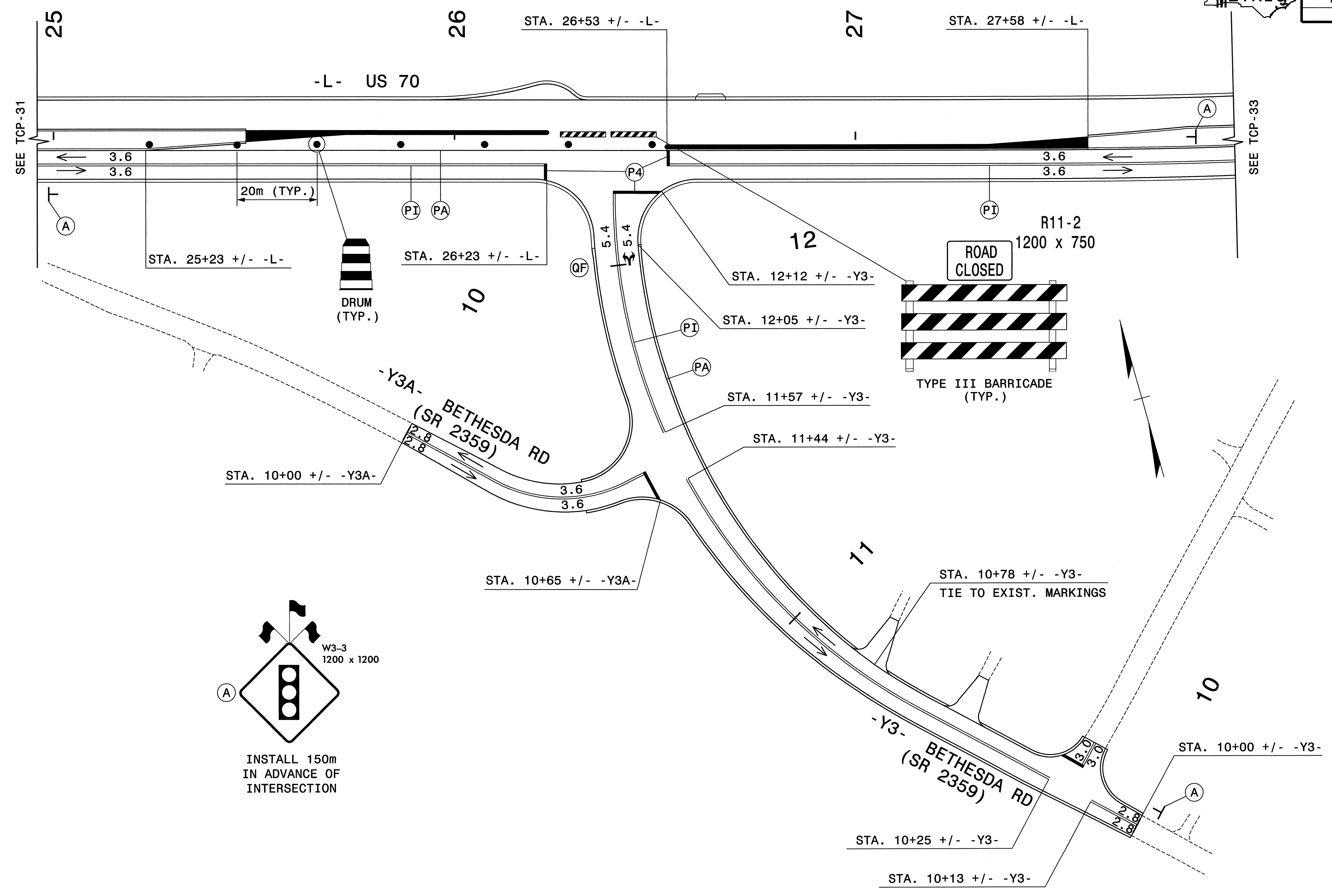


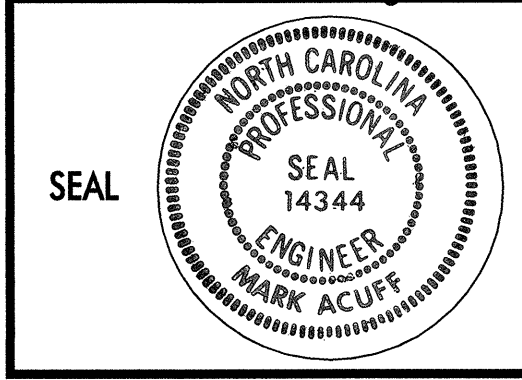


PROJ. REFERENCE NO. R-2911A	SHEET NO. TCP-32
--------------------------------	---------------------



Plans prepared by:  
**KO & ASSOCIATES, P.C.**  
 Consulting Engineers  
 1011 SCHAUB DR., SUITE #202  
 RALEIGH, N.C. 27606  
 For Division of Highways

APPROVED: *Mark Acuff* DATE: 8/18/03



<b>PHASE III</b>		REVISIONS	
SCALE:	NONE		
DATE:	8-20-03		
DWG. BY:	B.L.M.		
DESIGN BY:	M.S.A.		
REVIEWED BY:	M.S.A.		

I:\TRAFFIC\Sub Jobs\2911a\F002\PH-32.dgn  
 08/15/2003 04:03:32 PM