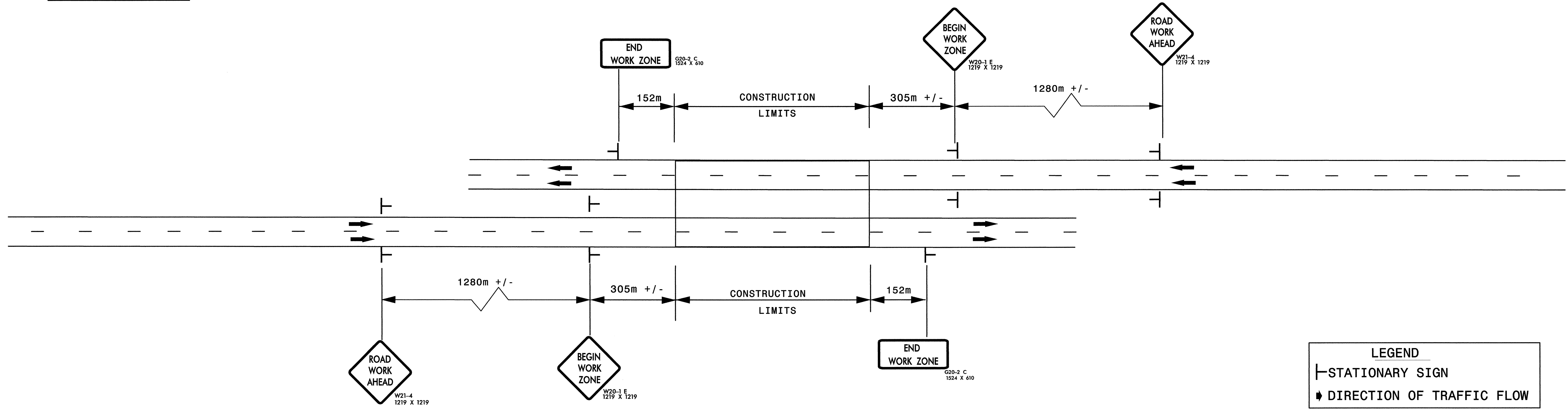




DETAIL A

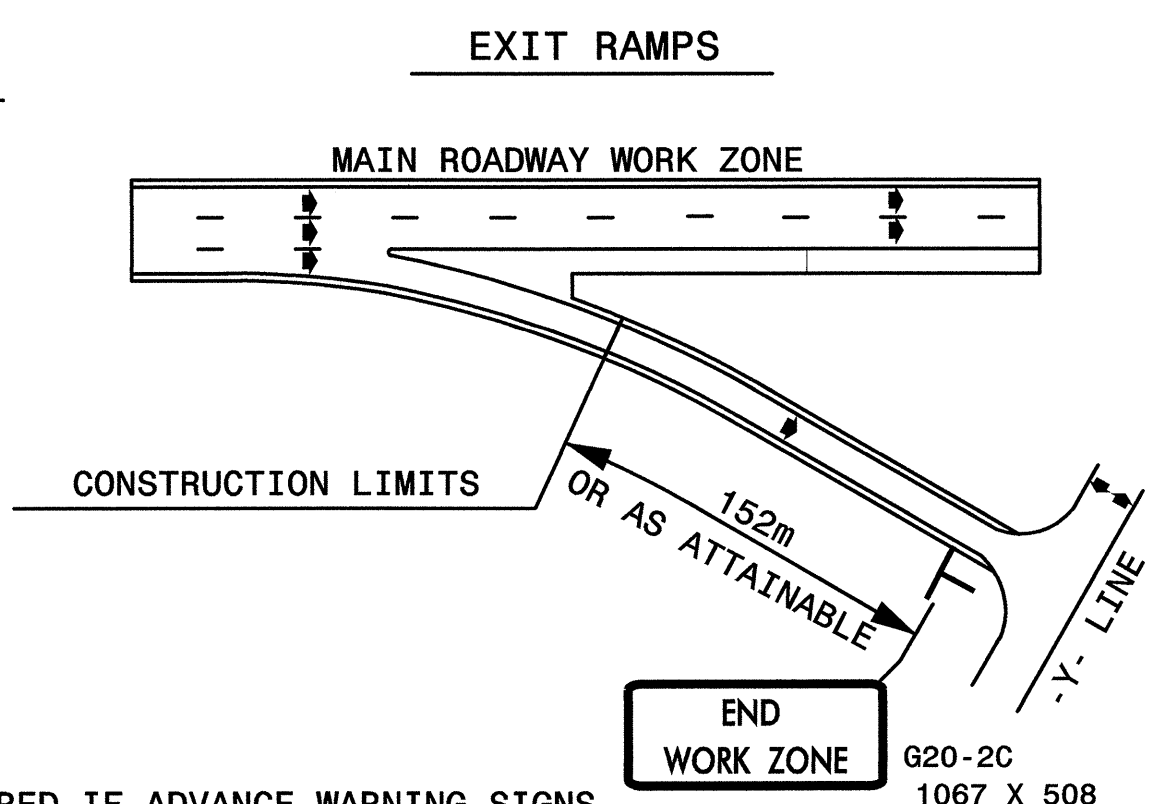


LEGEND

— STATIONARY SIGN

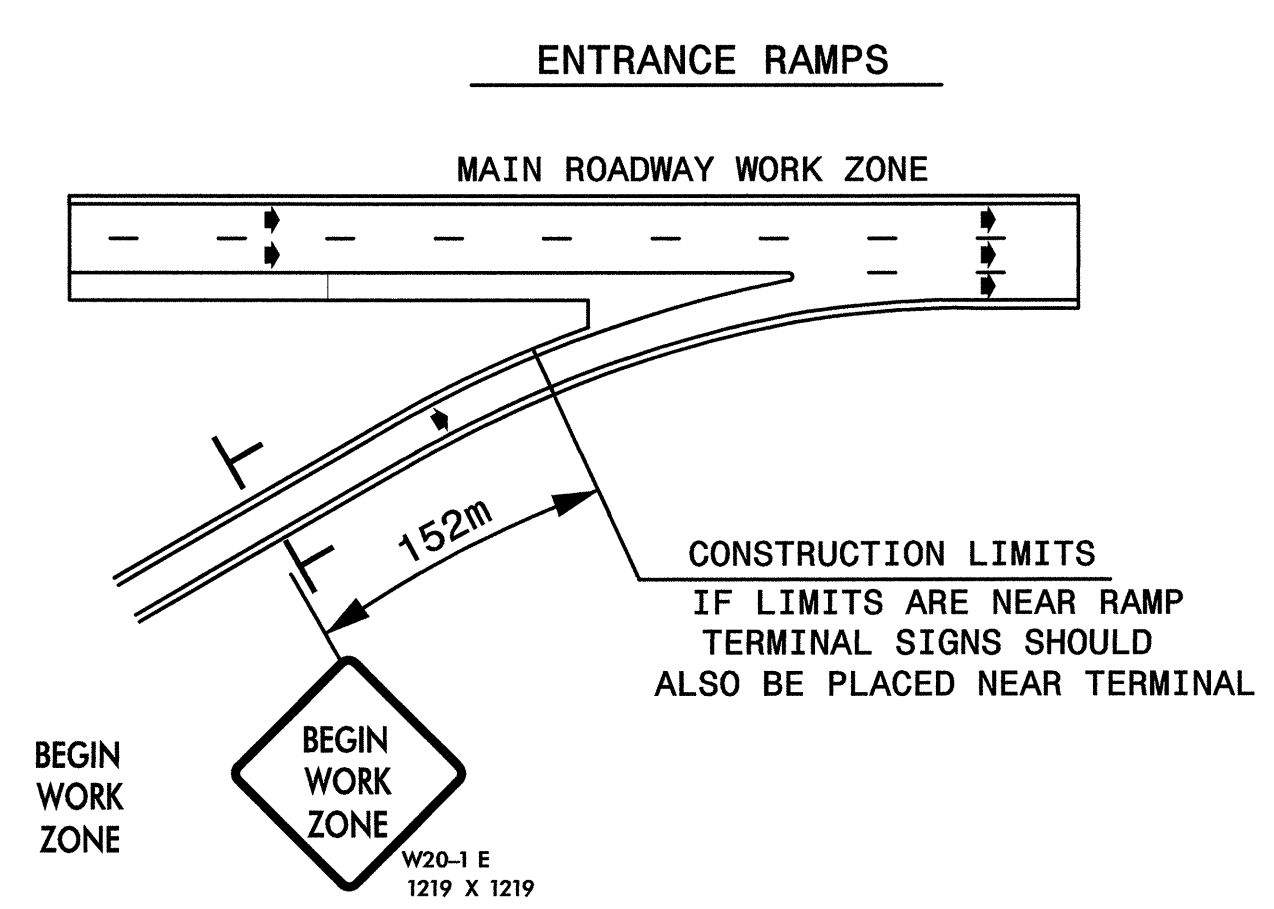
➔ DIRECTION OF TRAFFIC FLOW

DETAIL B

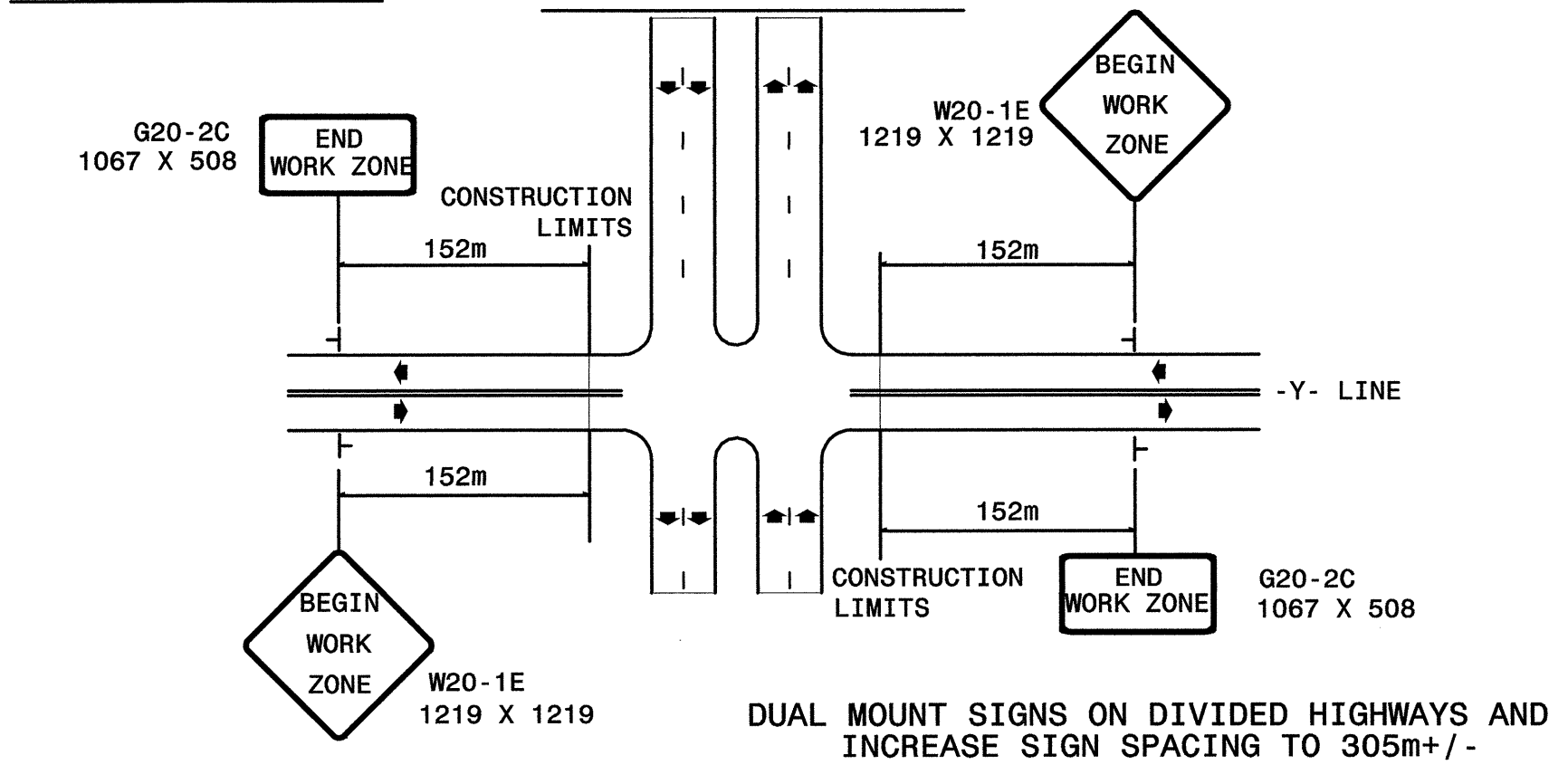


NOTE: SIGN NOT REQUIRED IF ADVANCE WARNING SIGNS HAVE BEEN PLACED ALONG -Y- LINE THAT RAMP INTERSECTS. IF CONSTRUCTION LIMITS ARE AT END OF RAMP, PLACE SIGN AT END OF RAMP.

DETAIL C



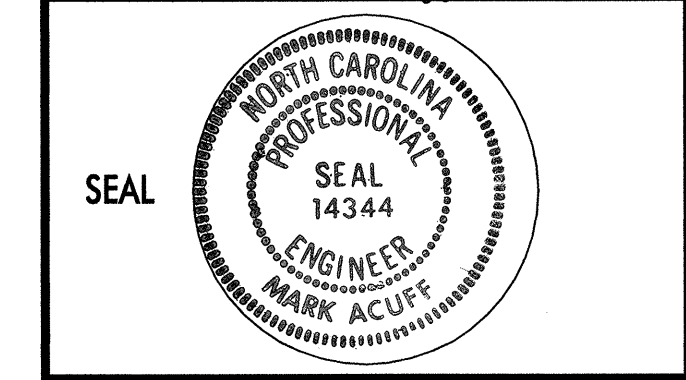
DETAIL D



GENERAL NOTES

- DO NOT INSTALL ADVANCE WARNING SIGNS MORE THAN 3 DAYS PRIOR TO BEGINNING OF WORK.
- WHENEVER THE POSTED SPEED LIMIT IS ALTERED, COVER OR REMOVE ANY CONFLICTING SPEED LIMIT SIGN AND REPLACE WITH THE PROPER SPEED LIMIT SIGNS WITHIN THE PROJECT LIMIT. COVERING, UNCOVERING, INSTALLATION, AND REMOVAL OF SPEED LIMIT SIGNS ARE CONSIDERED INCIDENTAL TO VARIOUS ITEMS OF WORK IN THIS PROJECT.
- ALL SIGN SPACING DIMENSIONS ARE APPROXIMATE, FIELD ADJUST AS NECESSARY OR AS DIRECTED.
- USE 1.4kg STEEL U-CHANNEL POST OR 90mm X 90mm WOOD POST FOR ALL WORK ZONE SIGNS. 1.4kg STEEL U-CHANNEL POSTS MUST MEET THE REQUIREMENTS OF SECTION 1094-1(B), MAY BE GALVANIZED STEEL, OR MAY BE PAINTED GREEN BY THE POST MANUFACTURER. SQUARE STEEL TUBING POSTS HAVING EQUIVALENT STRENGTH OF THE 1.4kg STEEL U-CHANNEL POST ARE ALSO ACCEPTABLE FOR USE. ERECT SIGNS PER ROADWAY STANDARD DRAWING 1110.01. PAYMENT FOR WOOD POSTS, 1.4kg STEEL U-CHANNEL AND SQUARE STEEL TUBING POSTS WITH SIGNS WILL BE MADE ACCORDING TO STANDARD SPECIFICATION "WORK ZONE SIGNS" SECTION 1110.
- WHEN NECESSARY, USE SPLICING IN ACCORDANCE WITH ROADWAY STANDARD DRAWING NO. 1110.01. REMOVE ENTIRE POST WHEN REMOVING SIGNS WITH SPLICED POSTS.
- DO NOT BACK BRACE SIGN SUPPORTS.

APPROVED: *Mark Acute* DATE: 8/18/03



DETAIL DRAWING FOR TWO-WAY UNDIVIDED WORK ZONE SIGNS

SCALE: NONE		REVISIONS
DATE: 8-20-03		1-01
DWG. BY: B.L.M.		
DESIGN BY: B.L.M.		
REVIEWED BY: M.S.A.		

Plans prepared by:
KO & ASSOCIATES, P.C.
 Consulting Engineers
 1011 SCHUB DR., SUITE #202
 RALEIGH, N.C. 27606
 For Division of Highways