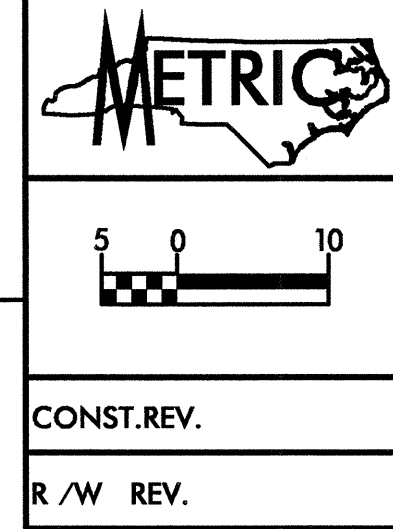
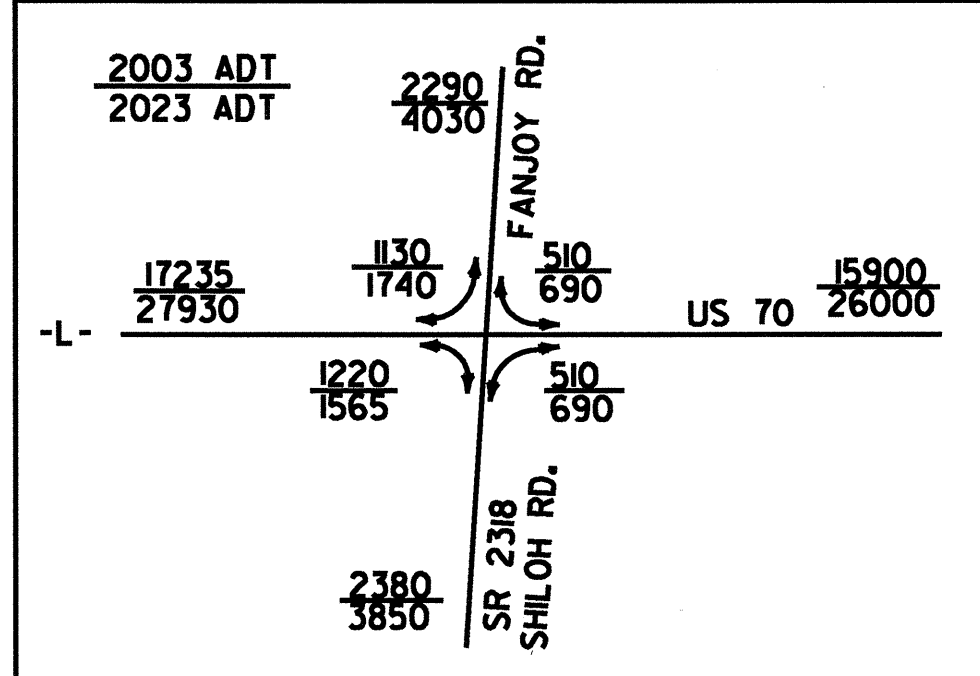
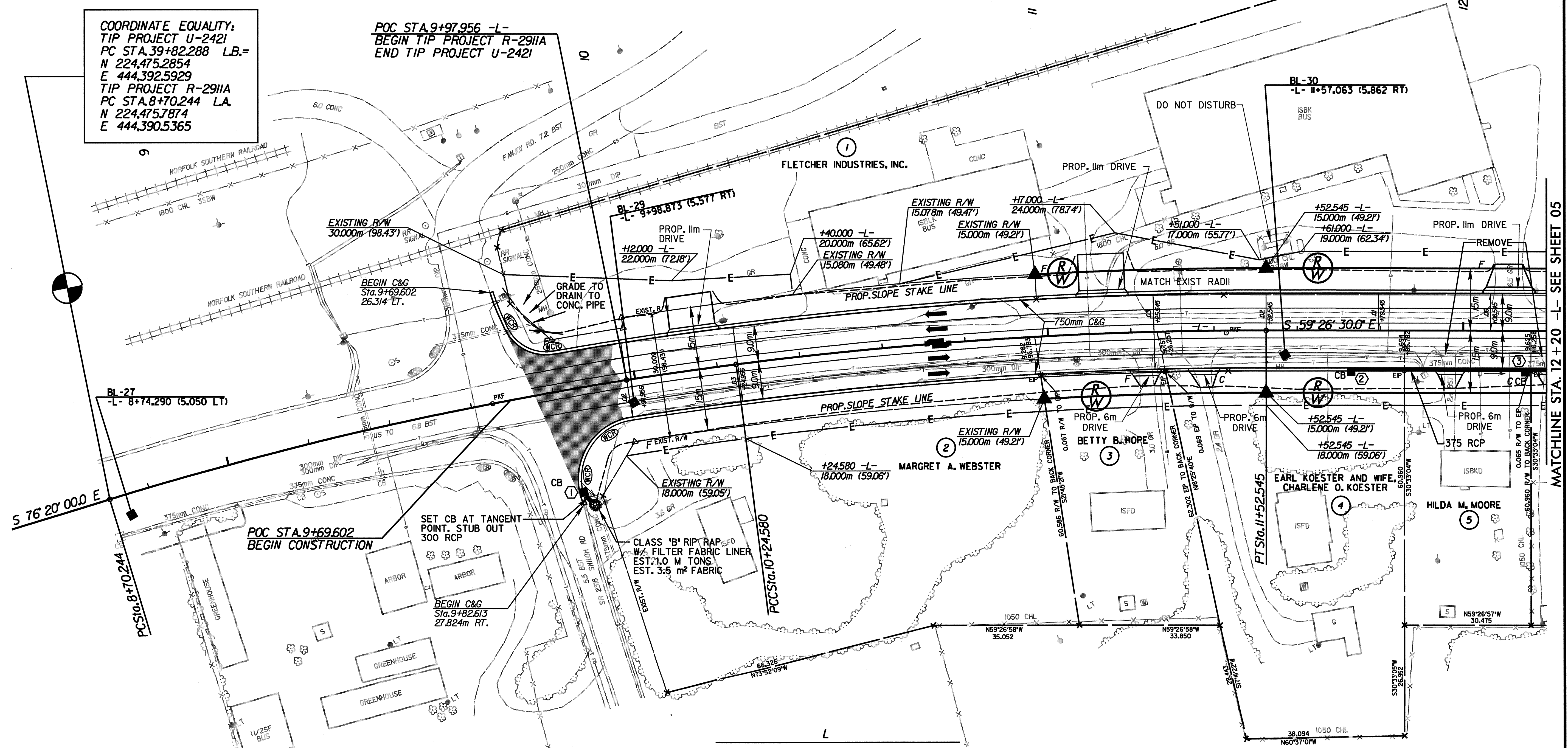


**DATUM DESCRIPTION**  
 THE LOCALIZED COORDINATE SYSTEM DEVELOPED FOR THIS PROJECT IS BASED ON THE STATE PLANE COORDINATES ESTABLISHED BY NCGS FOR MONUMENT "384-JAS" WITH NAD 83 STATE PLANE GRID COORDINATES OF NORTHING: 220871.892(m) EASTING: 459380.926(m) THE AVERAGE COMBINED GRID FACTOR USED ON THIS PROJECT (GROUND TO GRID) IS: 0.999873400 THE N.C. LAMBERT GRID BEARING LOCALIZED HORIZONTAL GRID DISTANCE FROM "384-JAS" TO -L- POC STATION 9+97.956 IS N 76°30'57.874" W 15290.236m ALL LINEAR DIMENSIONS ARE LOCALIZED HORIZONTAL DISTANCES VERTICAL DATUM USED IS NGVD 29

**COORDINATE EQUALITY:**  
 TIP PROJECT U-2421  
 PC STA. 39+82.288 L.B.=  
 N 224,475.2854  
 E 444,392.5929  
 TIP PROJECT R-291A  
 PC STA. 8+70.244 L.A.  
 N 224,475.7874  
 E 444,390.5365



PROJECT REFERENCE NO. R-291A	SHEET NO. 04
R/W SHEET NO.	
ROADWAY DESIGN ENGINEER	HYDRAULICS ENGINEER
CONST. REV.	
R/W REV.	



PI Sta 9+47.592 Δ = 9° 33' 35.3" (RT) L = 154.336 M T = 77.348 M R = 925.000 M SUPER = 0.02	PI Sta 10+88.650 Δ = 7° 19' 54.7" (RT) L = 127.965 M T = 64.070 M R = 1,000.000 M SUPER = 0.03
--	---

SEE SHEET 33 FOR -L- PROFILE

REVISIONS

ARCADIS G&M  
 Date: 3/2/2004 Time: 8:05:11 AM  
 File: merryl\_roadway\proj\N291a\_roy\_psh-e04.dgn

MATCHLINE STA. 12 + 20 -L- SEE SHEET 05