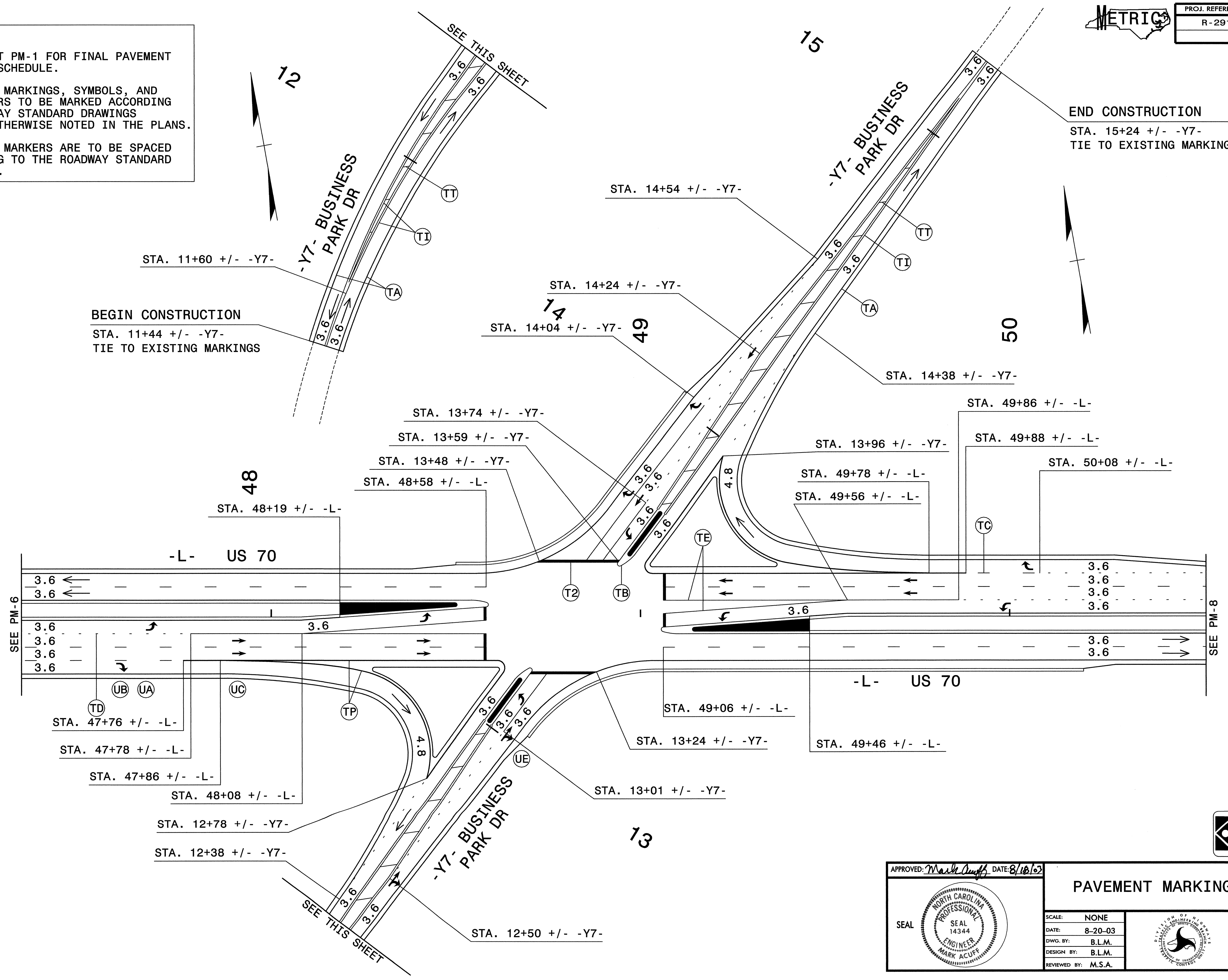




PROJ. REFERENCE NO.	SHEET NO.
R-2911A	PM-7

NOTES:  
 -SEE SHEET PM-1 FOR FINAL PAVEMENT MARKING SCHEDULE.  
 -PAVEMENT MARKINGS, SYMBOLS, AND CHARACTERS TO BE MARKED ACCORDING TO ROADWAY STANDARD DRAWINGS UNLESS OTHERWISE NOTED IN THE PLANS.  
 -PAVEMENT MARKERS ARE TO BE SPACED ACCORDING TO THE ROADWAY STANDARD DRAWINGS.



BEGIN CONSTRUCTION  
 STA. 11+44 +/- -Y7-  
 TIE TO EXISTING MARKINGS

END CONSTRUCTION  
 STA. 15+24 +/- -Y7-  
 TIE TO EXISTING MARKINGS

SEE PM-6

SEE PM-8

P:\TRAFFIC\Sub Jobs\25916\F1002\VFMT.PMP  
 08/18/2003 09:44:40 AM

Plans prepared by:  
**KO & ASSOCIATES, P.C.**  
 Consulting Engineers  
 1011 SCHAUB DR., SUITE #202  
 RALEIGH, N.C. 27606  
 For Division of Highways

APPROVED: *Mark Duff* DATE: 8/18/03



<b>PAVEMENT MARKING PLAN</b>									
SCALE: NONE	<table border="1"> <tr><th colspan="2">REVISIONS</th></tr> <tr><td> </td><td> </td></tr> <tr><td> </td><td> </td></tr> <tr><td> </td><td> </td></tr> </table>	REVISIONS							
REVISIONS									
DATE: 8-20-03									
DWG. BY: B.L.M.									
DESIGN BY: B.L.M.									
REVIEWED BY: M.S.A.	<table border="1"> <tr><td>CADD</td></tr> <tr><td>FILE</td></tr> </table>	CADD	FILE						
CADD									
FILE									