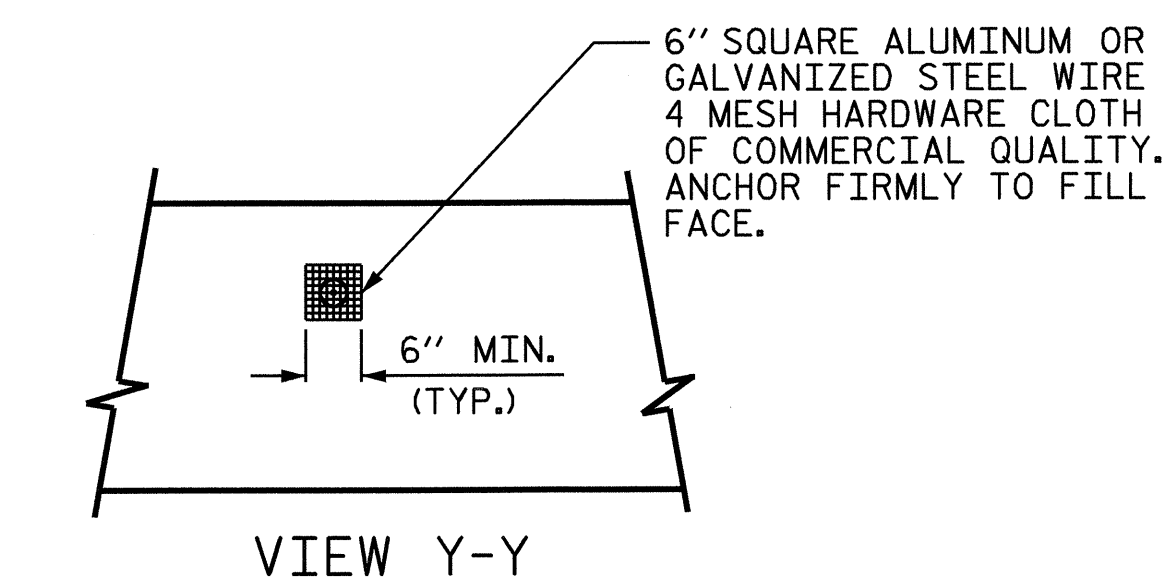
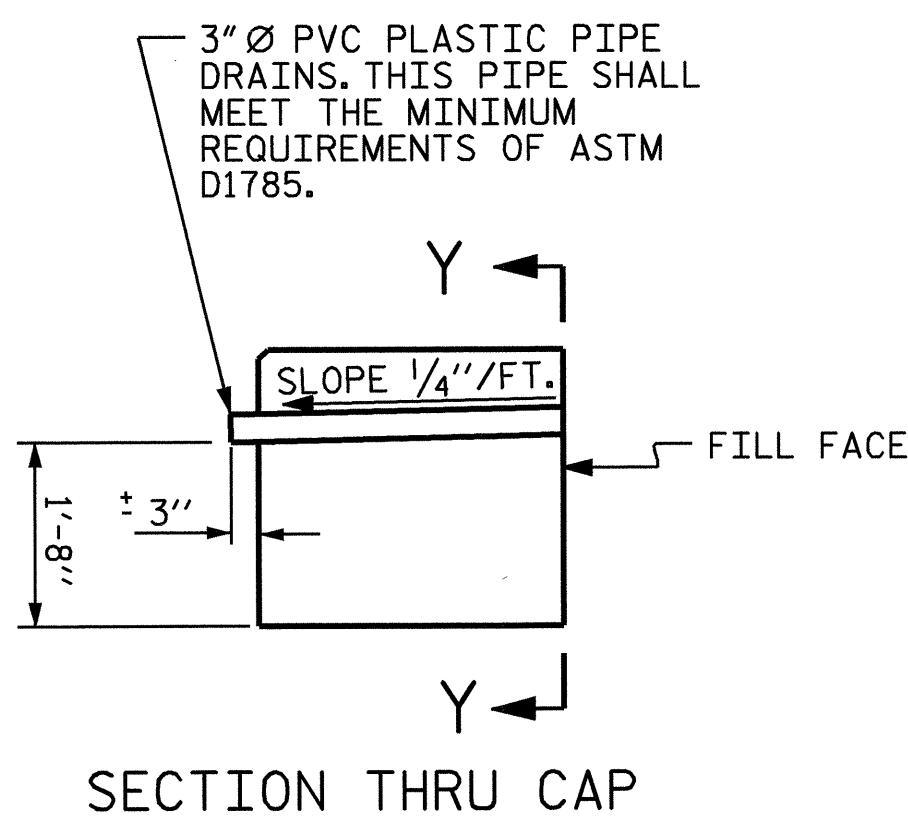


BAGGED STONE AND PIPE SHALL BE PLACED IMMEDIATELY AFTER COMPLETION OF END BENT EXCAVATION. PIPE MAY BE EITHER CONCRETE, CORRUGATED STEEL, CORRUGATED ALUMINUM ALLOY, OR CORRUGATED PLASTIC. PERFORATED PIPE WILL NOT BE ALLOWED.

BAGGED STONE SHALL REMAIN IN PLACE UNTIL THE ENGINEER DIRECTS THAT IT BE REMOVED. THE CONTRACTOR SHALL REMOVE AND DISPOSE OF SILT ACCUMULATIONS AT BAGGED STONE WHEN SO DIRECTED BY THE ENGINEER. BAGS SHALL BE REMOVED AND REPLACED WHENEVER THE ENGINEER DETERMINES THAT THEY HAVE DETERIORATED AND LOST THEIR EFFECTIVENESS.

NO SEPARATE PAYMENT WILL BE MADE FOR THIS WORK AND THE ENTIRE COST OF THIS WORK SHALL BE INCLUDED IN THE UNIT CONTRACT PRICE BID FOR THE SEVERAL PAY ITEMS.

TEMPORARY DRAINAGE AT END BENT

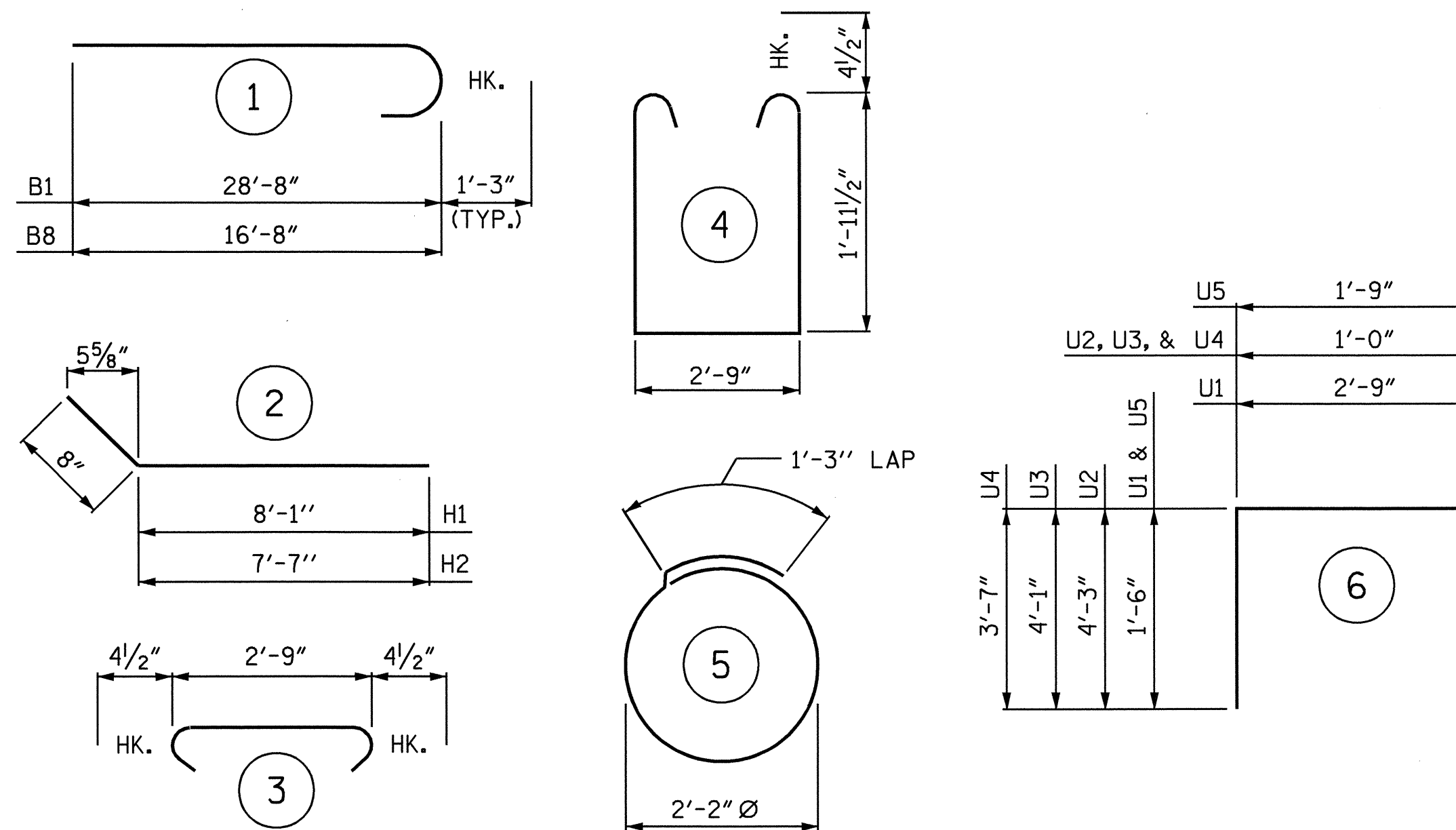


NOTE: NO SEPARATE PAYMENT WILL BE MADE FOR FURNISHING AND INSTALLING THE PVC PLASTIC PIPE DRAINS, HARDWARE CLOTH, AND FASTENERS. THE ENTIRE COST OF THIS WORK SHALL BE INCLUDED IN THE UNIT CONTRACT PRICE BID FOR THE SEVERAL PAY ITEMS.

PIPE DRAIN DETAILS

DRAWN BY: P.C. BREWER DATE: 3/2/04
 CHECKED BY: C.H. SIMPSON DATE: 4/5/04

BAR TYPES



ALL BAR DIMENSIONS ARE OUT TO OUT.

BILL OF MATERIAL

END BENT No. 2

STAGE 1

BAR	No.	SIZE	TYPE	LENGTH	WEIGHT
B1	9	9	1	29'-11"	915
B2	6	5	STR	27'-9"	174
B3	4	4	STR	27'-9"	74
B4	5	4	STR	18'-4"	61
B5	7	4	STR	2'-9"	13
B6	4	5	STR	9'-10"	41
B7	2	5	STR	8'-10"	18
D1	16	6	STR	1'-6"	36
H1	6	4	2	8'-9"	35
H2	6	4	2	8'-3"	33
K1	3	4	STR	3'-6"	7
K2	3	4	STR	3'-2"	6
S1	26	4	4	7'-5"	129
S2	26	4	3	3'-6"	61
S3	10	4	5	8'-1"	54
U1	12	4	6	5'-9"	46
U2	26	5	6	9'-6"	258
U3	1	5	6	9'-2"	10
U4	9	5	6	8'-2"	77
U5	2	4	6	4'-9"	6
V1	25	4	STR	4'-5"	74

EPOXY COATED REINFORCING STEEL 2,128 LBS.

STAGE 2

BAR	No.	SIZE	TYPE	LENGTH	WEIGHT
B5	5	4	STR	2'-9"	9
B6	4	5	STR	9'-10"	41
B7	2	5	STR	8'-10"	18
B8	9	9	1	17'-11"	548
B9	6	5	STR	17'-9"	111
B10	4	4	STR	17'-9"	47
B11	5	4	STR	8'-4"	28
D1	10	6	STR	1'-6"	23
H1	6	4	2	8'-9"	35
H2	6	4	2	8'-3"	33
K1	3	4	STR	3'-6"	7
K2	3	4	STR	3'-2"	6
S1	18	4	4	7'-5"	89
S2	18	4	3	3'-6"	42
S3	6	4	5	8'-1"	32
U1	6	4	6	5'-9"	23
U2	18	5	6	9'-6"	178
U3	1	5	6	9'-2"	10
U4	9	5	6	8'-2"	77
U5	2	4	6	4'-9"	6
V1	25	4	STR	4'-5"	74

EPOXY COATED REINFORCING STEEL 1,437 LBS.

TOTAL QUANTITIES (END BENT No. 2)

ITEM	STAGE 1	STAGE 2	TOTAL
EPOXY COATED REINFORCING STEEL	2,128 LBS.	1,437 LBS.	3,565 LBS.
CLASS AA CONCRETE	14.6 C.Y.	10.8 C.Y.	25.4 C.Y.
18" STEEL SHEET PILES	No. 26 SQ. FT. 1402.5	No. 18 SQ. FT. 971.0	No. 44 SQ. FT. 2373.5
16" PRESTRESSED CONCRETE PILES	No. 5 LIN. FT. 275.0	No. 3 LIN. FT. 165.0	No. 8 LIN. FT. 440.0

CLASS AA CONCRETE BREAKDOWN

POUR #1 CAP & BOTT. OF WING W2	13.5 C.Y.
POUR #2 TOP OF WING W2	1.0 C.Y.
POUR #3 LATERAL GUIDE	0.1 C.Y.
TOTAL CLASS AA CONCRETE	14.6 C.Y.

CLASS AA CONCRETE BREAKDOWN

POUR #1 CAP & BOTT. OF WING W1	9.7 C.Y.
POUR #2 TOP OF WING W1	1.0 C.Y.
POUR #3 LATERAL GUIDE	0.1 C.Y.
TOTAL CLASS AA CONCRETE	10.8 C.Y.

18" STEEL SHEET PILES

No. PZ27 = 25	SQ. FT. = 1348.6
No. BW2750 = 1	SQ. FT. = 53.9
TOTAL No. = 26	SQ. FT. = 1402.5

18" STEEL SHEET PILES

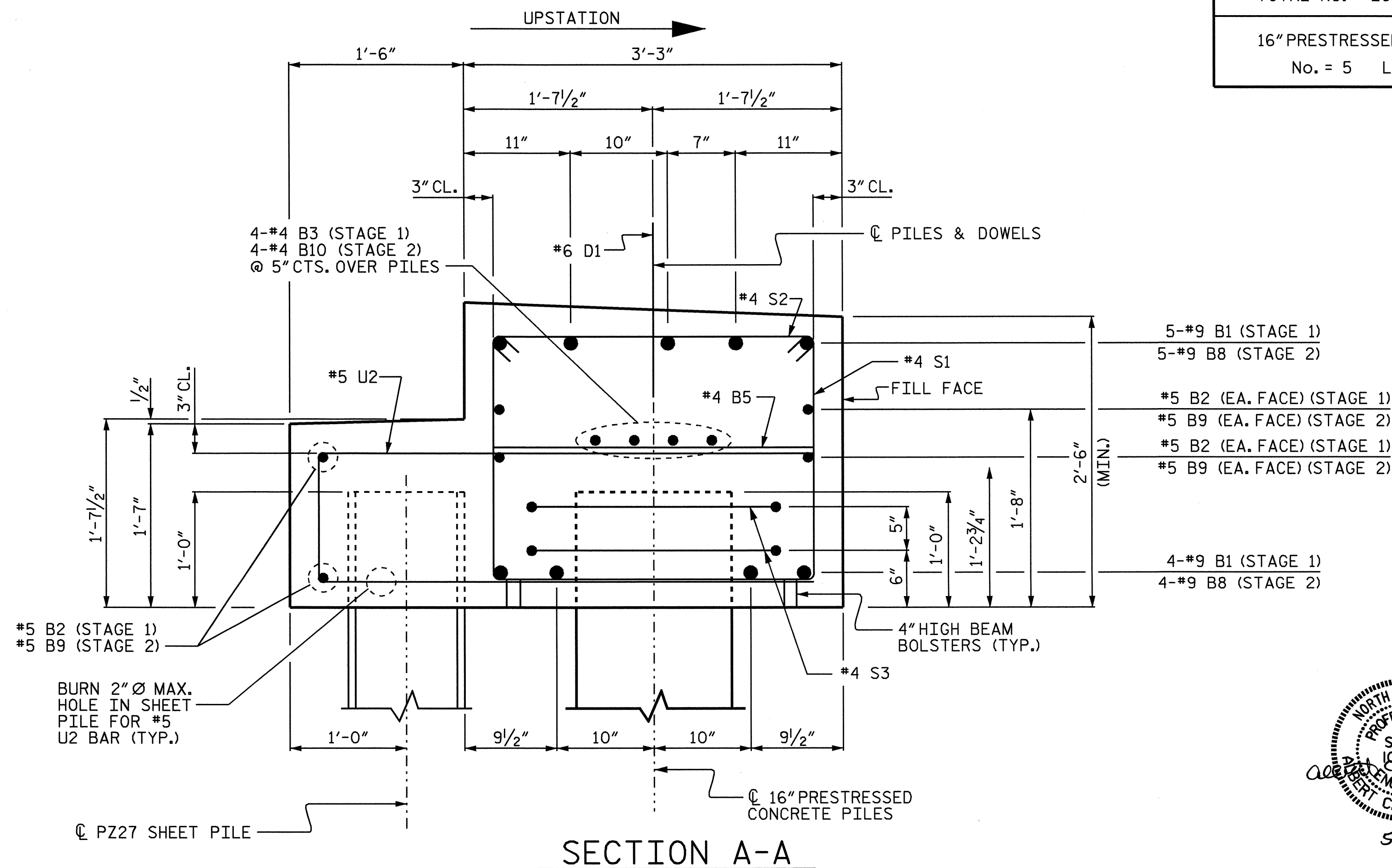
No. PZ27 = 17	SQ. FT. = 917.1
No. BW2750 = 1	SQ. FT. = 53.9
TOTAL No. = 18	SQ. FT. = 971.0

16" PRESTRESSED CONCRETE PILES

No. = 5	LIN. FT. = 275.0
---------	------------------

16" PRESTRESSED CONCRETE PILES

No. = 3	LIN. FT. = 165.0
---------	------------------

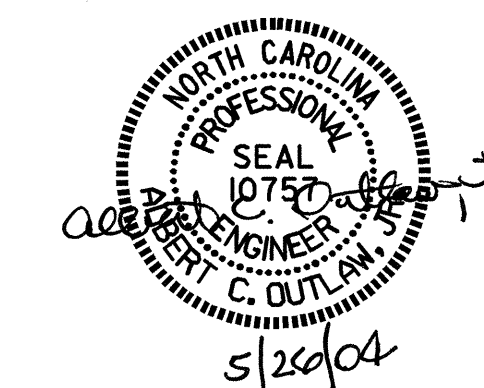


PROJECT NO. B-3348
 HYDE COUNTY
 STATION: 18+34.00 -L-

SHEET 6 OF 6

STATE OF NORTH CAROLINA
 DEPARTMENT OF TRANSPORTATION
 RALEIGH

SUBSTRUCTURE
 END BENT No. 2



REVISIONS						SHEET NO.
NO.	BY:	DATE:	NO.	BY:	DATE:	S-28
1			3			TOTAL SHEETS
2			4			76