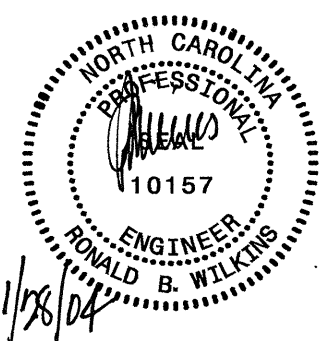
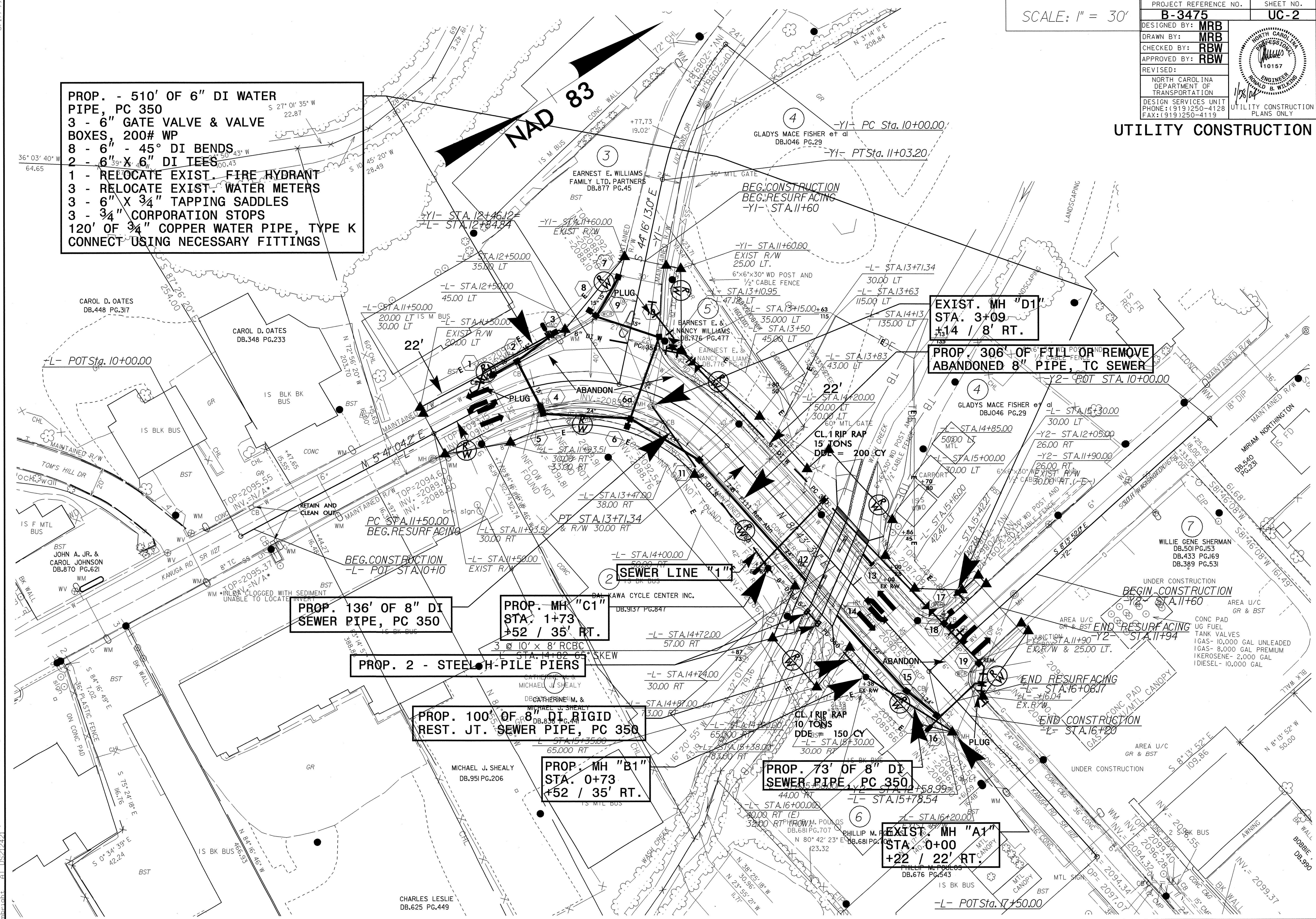


PROJECT REFERENCE NO. B-3475	SHEET NO. UC-2
DESIGNED BY: MRB	
DRAWN BY: MRB	
CHECKED BY: RBW	
APPROVED BY: RBW	
REVISED:	
NORTH CAROLINA DEPARTMENT OF TRANSPORTATION DESIGN SERVICES UNIT PHONE: (919) 250-4128 FAX: (919) 250-4119	
UTILITY CONSTRUCTION	

PROP. - 510' OF 6" DI WATER PIPE, PC 350
3 - 6" GATE VALVE & VALVE BOXES, 200# WP
8 - 6" - 45° DI BENDS
2 - 6" X 6" DI TEES
1 - RELOCATE EXIST. FIRE HYDRANT
3 - RELOCATE EXIST. WATER METERS
3 - 6" X 3/4" TAPPING SADDLES
3 - 3/4" CORPORATION STOPS
120' OF 3/4" COPPER WATER PIPE, TYPE K
CONNECT USING NECESSARY FITTINGS



EXIST. MH "D1"
STA. 3+09
14' / 8' RT.

PROP. 306' OF FILL OR REMOVE ABANDONED 8" PIPE, TC SEWER

PROP. 136' OF 8" DI SEWER PIPE, PC 350

PROP. MH "C1"
STA. 1+73
+52 / 35' RT.

PROP. 2 - STEEL-H-PILE PIERS

PROP. 100' OF 8" DI RIGID REST. JT. SEWER PIPE, PC 350

PROP. MH "B1"
STA. 0+73
+52 / 35' RT.

PROP. 73' OF 8" DI SEWER PIPE, PC 350

EXIST. MH "A1"
STA. 0+00
+22 / 22' RT.

28 JAN 2004 14:07
 68 U:\1\Drawings\B-3475-UC2.ut_psh.dgn
 mbrubbs