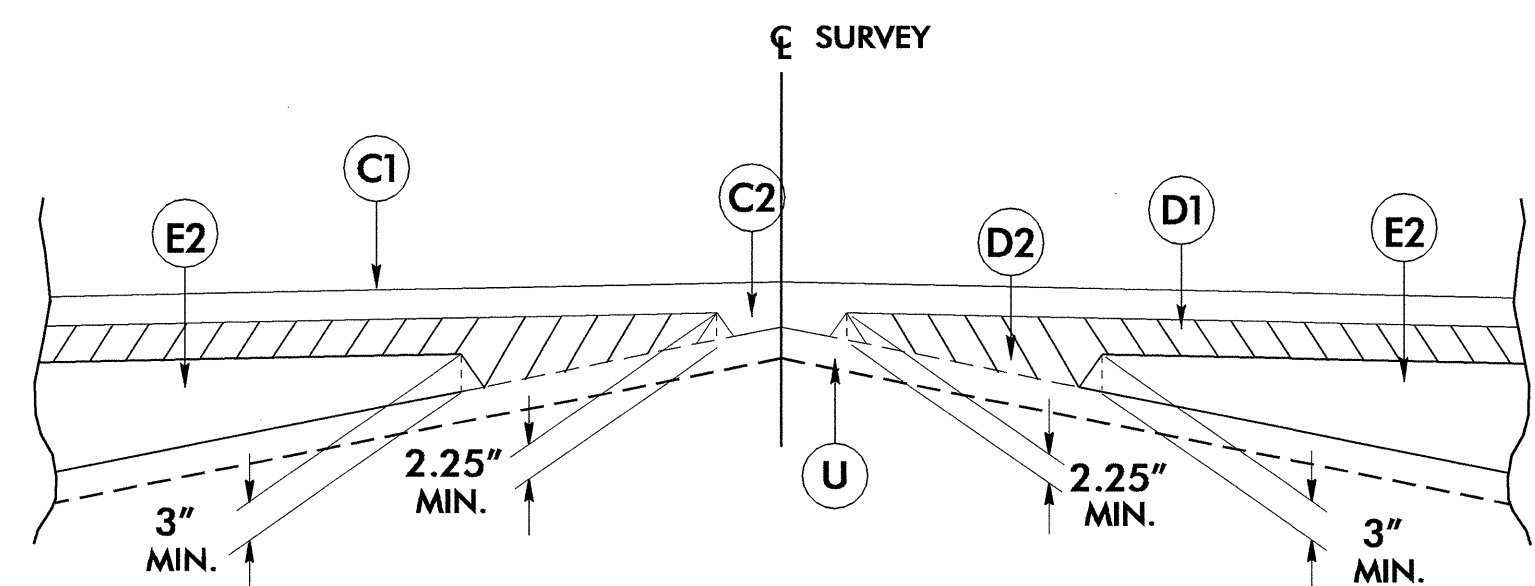


6/2/99

# FINAL PAVEMENT SCHEDULE

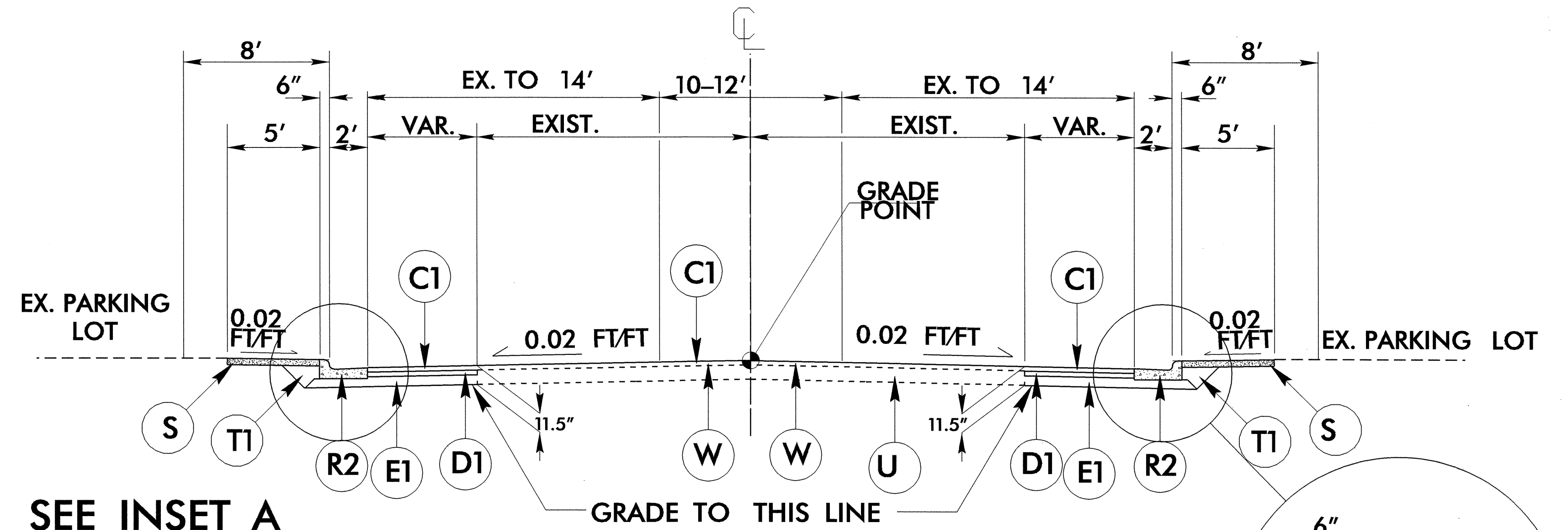
|    |  |
|----|--|
| C1 | PROP. APPROX. 3.0" ASPHALT CONCRETE SURFACE COURSE, TYPE S9.5B, AT AN AVERAGE RATE OF 168 LBS. PER SQ. YD. IN EACH OF TWO LAYERS.  |
| C2 | PROP. VAR. DEPTH ASPHALT CONCRETE SURFACE COURSE, TYPE S9.5B, AT AN AVERAGE RATE OF 112 LBS. PER SQ. YD. PER 1" DEPTH. TO BE PLACED IN LAYERS NOT TO EXCEED 1 1/2" IN DEPTH.                                   |
| D1 | PROP. APPROX. 4.0" ASPHALT CONCRETE INTERMEDIATE COURSE, TYPE I19.0B, AT AN AVERAGE RATE OF 456 LBS. PER SQ. YD.   |
| D2 | PROP. VAR. DEPTH ASPHALT CONCRETE INTERMEDIATE COURSE, TYPE I19.0B, AT AN AVERAGE RATE OF 114 LBS. PER SQ. YD. PER 1" DEPTH, TO BE PLACED IN LAYERS NOT LESS THAN 2 1/4" IN DEPTH OR GREATER THAN 4" IN DEPTH. |
| E1 | PROP. APPROX. 4.5" ASPHALT CONCRETE BASE COURSE, TYPE B25.0B, AT AN AVERAGE RATE OF 513 LBS. PER SQ. YD.   |
| E2 | PROP. VAR. DEPTH ASPHALT CONCRETE BASE COURSE, TYPE B25.0B, AT AN AVERAGE RATE OF 114 LBS. PER SQ. YD. PER 1" DEPTH. TO BE PLACED IN LAYERS NOT LESS THAN 3" IN DEPTH OR GREATER THAN 5 1/2" IN DEPTH.         |
| R1 | 5" MONOLITHIC CONCRETE ISLAND  |
| R2 | 2'-6" CONCRETE CURB AND GUTTER.  |
| S  | 4" CONC. SIDEWALK  |
| U  | EXISTING PAVEMENT.   |
| T1 | EARTH MATERIAL.  |
| W  | WEDGING  |



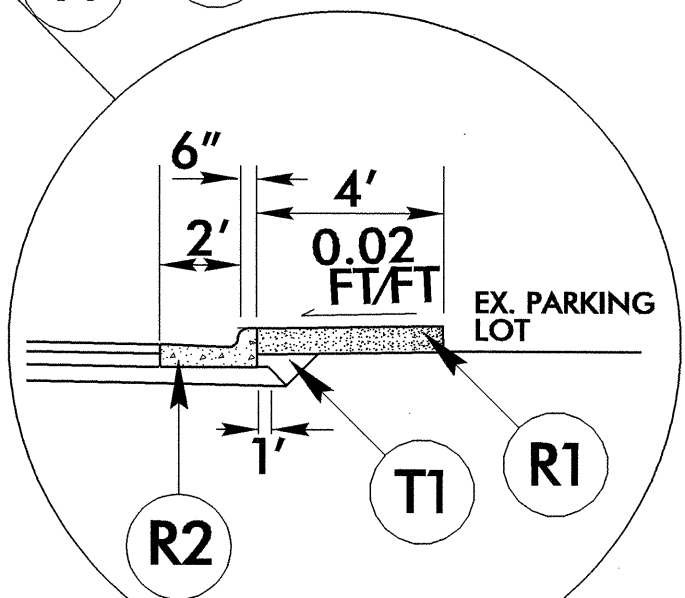
Detail Showing Method of Wedging

|  |  |
|--|--|
| PROJECT REFERENCE NO.<br>B-3475  | SHEET NO.<br>2   |
| ROADWAY DESIGN ENGINEER<br>GARY R. LOVERING<br>NORTH CAROLINA PROFESSIONAL ENGINEER<br>25873 | PAVEMENT DESIGN ENGINEER<br>SEAL 1238<br>NORTH CAROLINA PROFESSIONAL ENGINEER<br>CHI CHEN<br>3/23/04 |

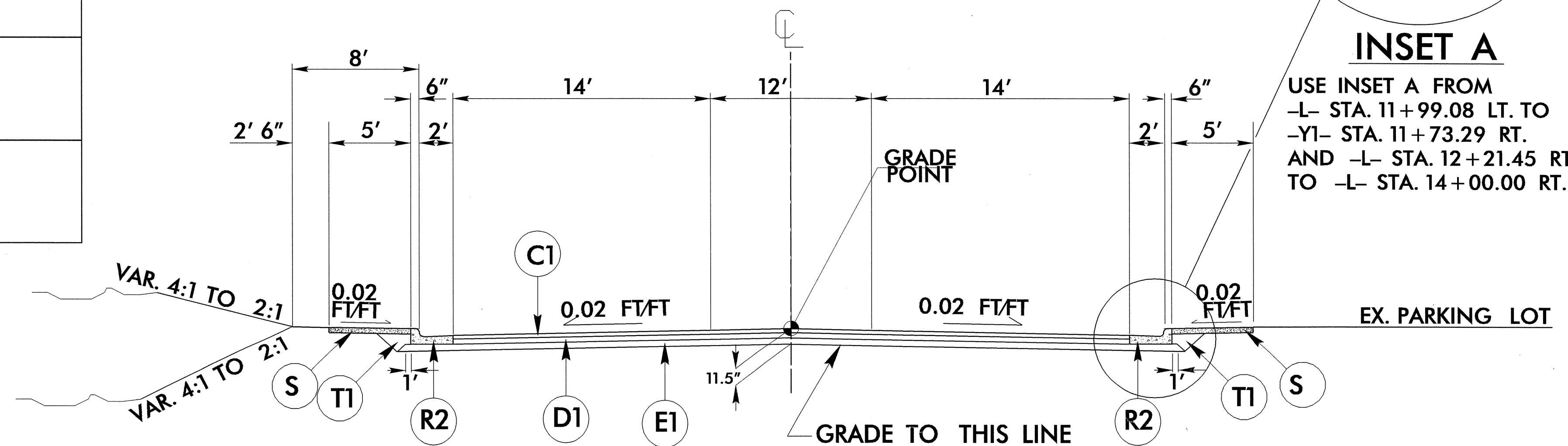
- NOTE: 1) ALL PAVEMENT EDGE SLOPES ARE 1:1 UNLESS OTHERWISE NOTED  
 2) OFFSITE DETOUR ROUTE SHALL BE PATCHED WITH ASPHALT PLANT MIX, PAVEMENT REPAIR AND OVERLAYED WITH 1.5" OF ACSC TYPE S9.5B AS DIRECTED BY THE ENGINEER



**TYPICAL SECTION NO. 1**  
 -L- STA. 11+50 TO STA. 14+50  
 -L- STA. 15+20.00 TO 16+06.17



**INSET A**  
 USE INSET A FROM  
 -L- STA. 11+99.08 LT. TO  
 -YI- STA. 11+73.29 RT.  
 AND -L- STA. 12+21.45 RT.  
 TO -L- STA. 14+00.00 RT.



**TYPICAL SECTION NO. 2**  
 -L- STA. 14+50 TO STA. 15+20.00

18-MAR-2004 15:27  
 REVISED BY: 3475-IMP  
 S:\asb\at\RD21454