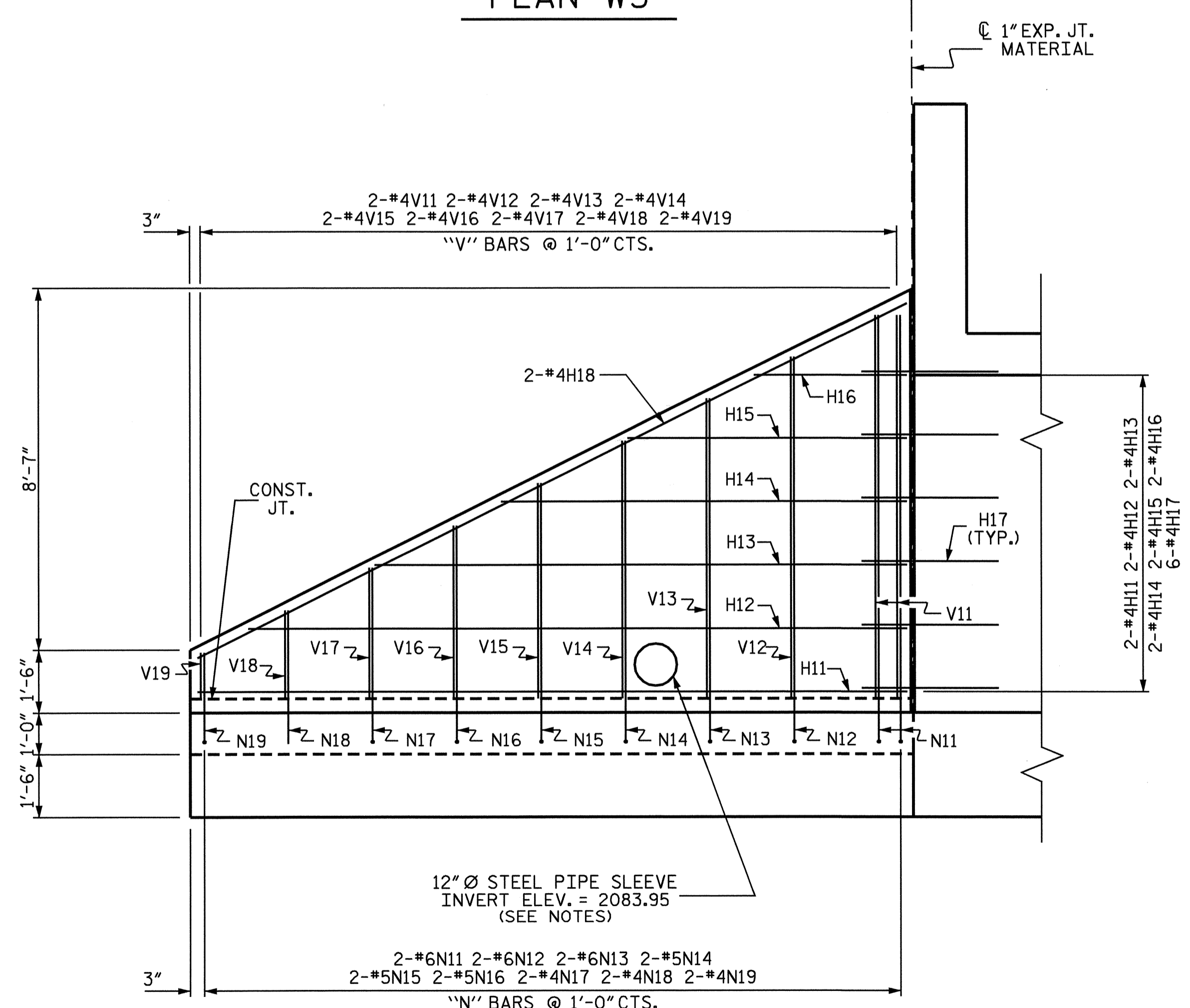
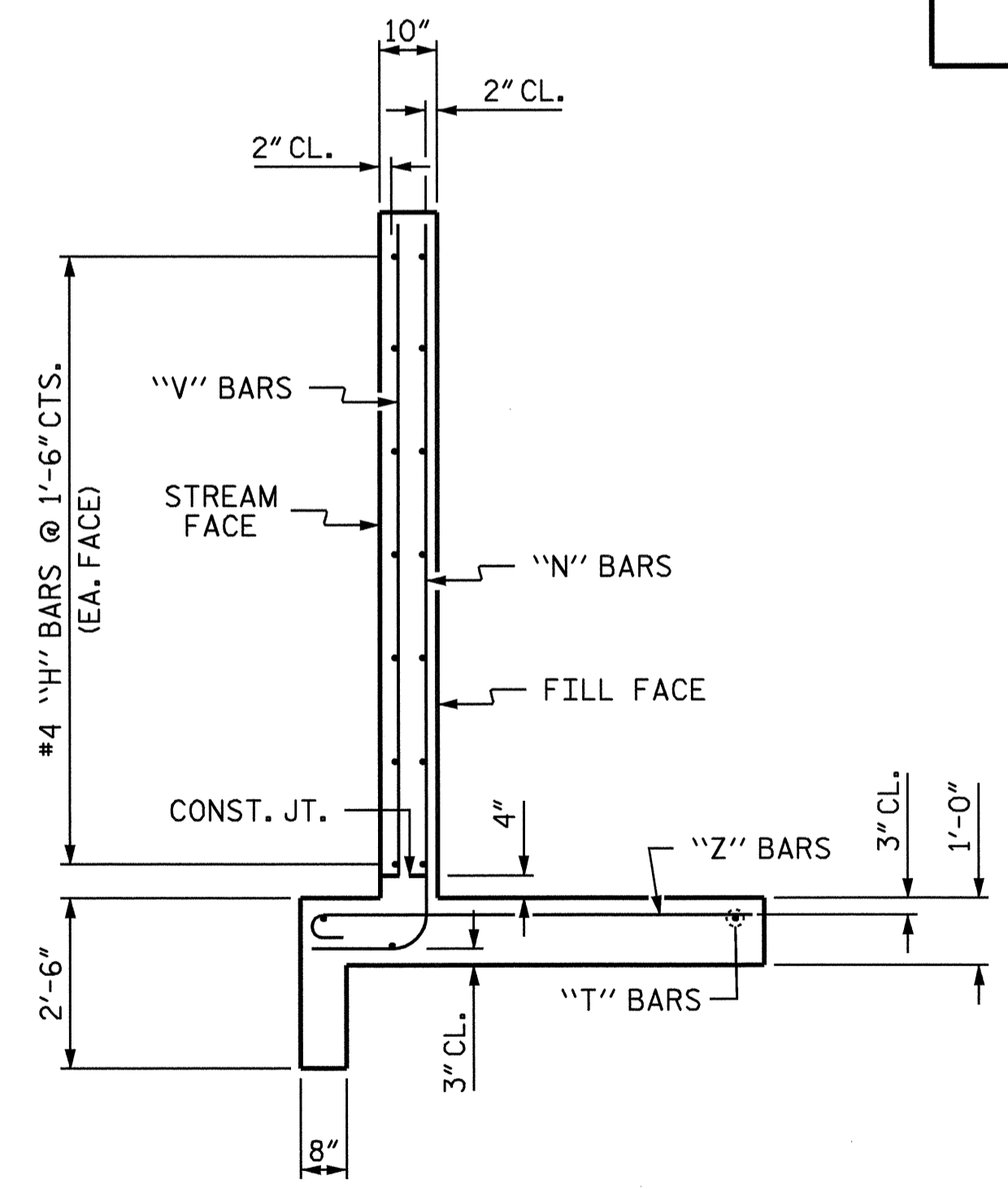


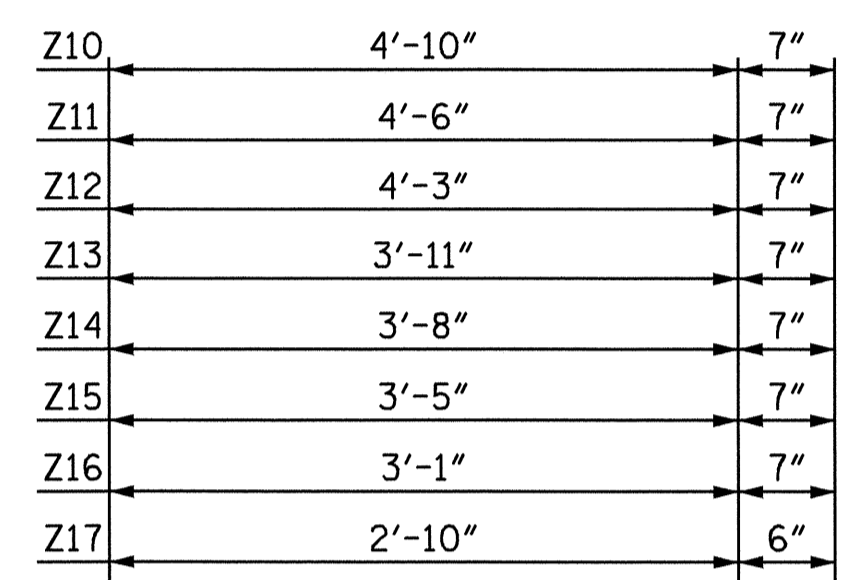
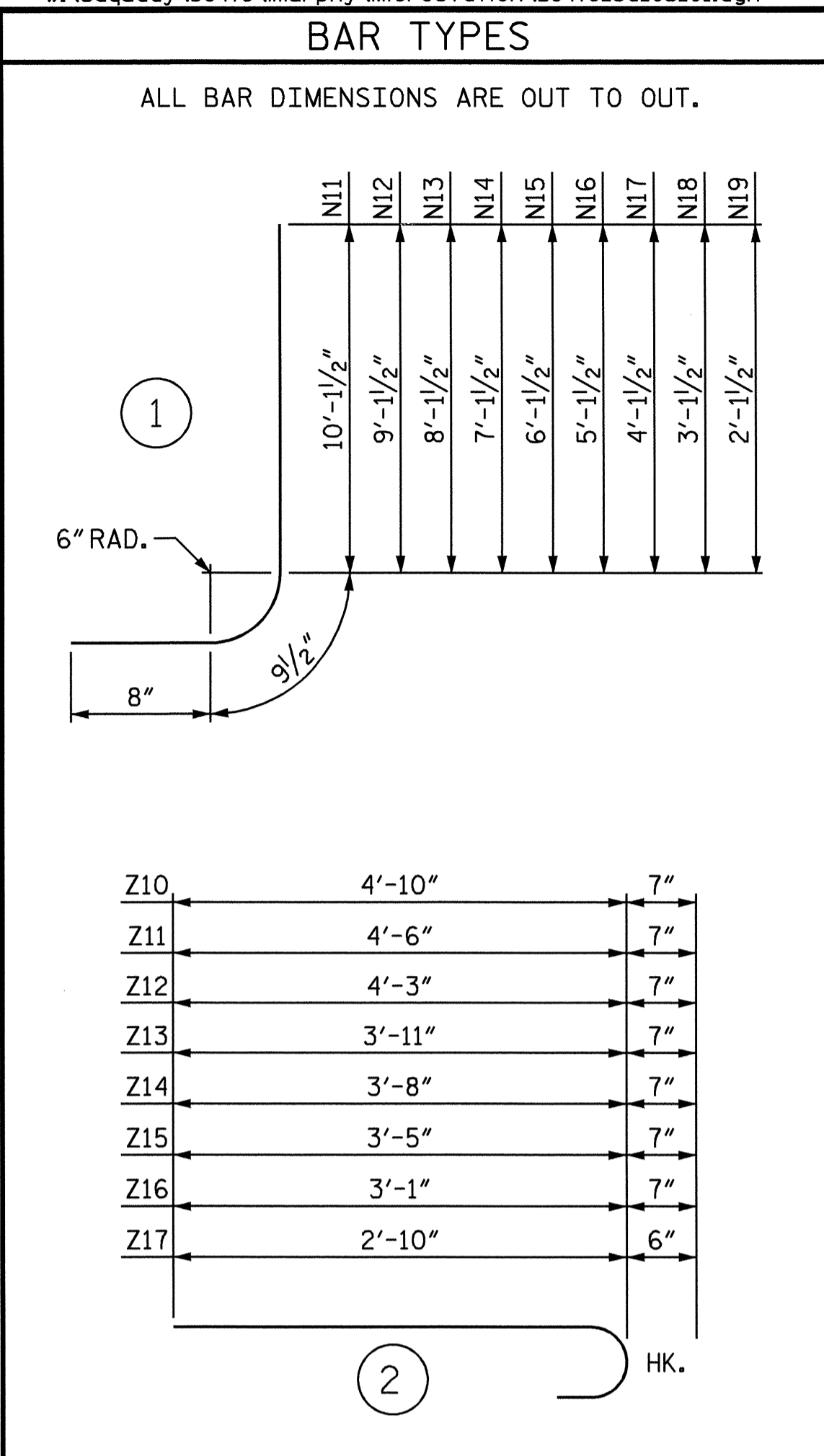
PLAN W3



ELEVATION W3



TYPICAL WING SECTION



BILL OF MATERIAL					
BAR NO.	SIZE	TYPE	LENGTH	WEIGHT	
H11	2	#4	STR	16'-10"	22
H12	2	#4	STR	15'-7"	21
H13	2	#4	STR	12'-7"	17
H14	2	#4	STR	9'-7"	13
H15	2	#4	STR	6'-7"	9
H16	2	#4	STR	3'-7"	5
H17	6	#4	STR	3'-3"	13
N11	2	#6	1	11'-7"	35
N12	2	#6	1	10'-7"	32
N13	2	#6	1	9'-7"	29
N14	2	#5	1	8'-7"	18
N15	2	#5	1	7'-7"	16
N16	2	#5	1	6'-7"	14
N17	2	#4	1	5'-7"	7
N18	2	#4	1	4'-7"	6
N19	2	#4	1	3'-7"	5
S2	3	#6	STR	4'-10"	22
T3	2	#5	STR	16'-10"	35
T4	1	#5	STR	19'-7"	20
V11	2	#4	STR	9'-1"	12
V12	2	#4	STR	8'-1"	11
V13	2	#4	STR	7'-1"	9
V14	2	#4	STR	6'-1"	8
V15	2	#4	STR	5'-1"	7
V16	2	#4	STR	4'-1"	5
V17	2	#4	STR	3'-1"	4
V18	2	#4	STR	2'-1"	3
V19	2	#4	STR	1'-1"	1
Z10	3	#5	2	5'-5"	17
Z11	2	#5	2	5'-1"	11
Z12	2	#5	2	4'-10"	10
Z13	2	#5	2	4'-6"	9
Z14	2	#5	2	4'-3"	9
Z15	2	#5	2	4'-0"	8
Z16	2	#5	2	3'-8"	8
Z17	2	#4	2	3'-4"	4
REINFORCING STEEL FOR 1 WING				475	LBS
CLASS A CONCRETE 1 WING				6.8	CY

NOTES

- A 3 FOOT STRIP OF FILTER FABRIC SHALL BE ATTACHED TO THE FILL FACE OF THE WING COVERING THE ENTIRE LENGTH OF THE EXPANSION JOINT.
- THE 12" Ø STEEL PIPE SLEEVE LOCATED IN THE WING W3 SHALL BE LOCATED BY THE ENGINEER.
- THE REINFORCING STEEL SHALL BE FIELD BENT AS NECESSARY TO CLEAR THE SLEEVE.

PROJECT NO. B-3475  
HENDERSON COUNTY  
 STATION: 14+82.00 -L-  
 SHEET 8 OF 8



STATE OF NORTH CAROLINA DEPARTMENT OF TRANSPORTATION RALEIGH					
SPECIAL WING (W3) FOR CONCRETE BOX CULVERT SLOPE = 2:1					
REVISIONS					SHEET NO.
NO.	BY:	DATE:	NO.	BY:	DATE:
1			3		
2			4		
					C-8
					TOTAL SHEETS 8

ASSEMBLED BY : L.L.MURPHY DATE : 11-03  
 CHECKED BY : V.X.NGUYEN DATE : 02-04

STD. NO. CW9009