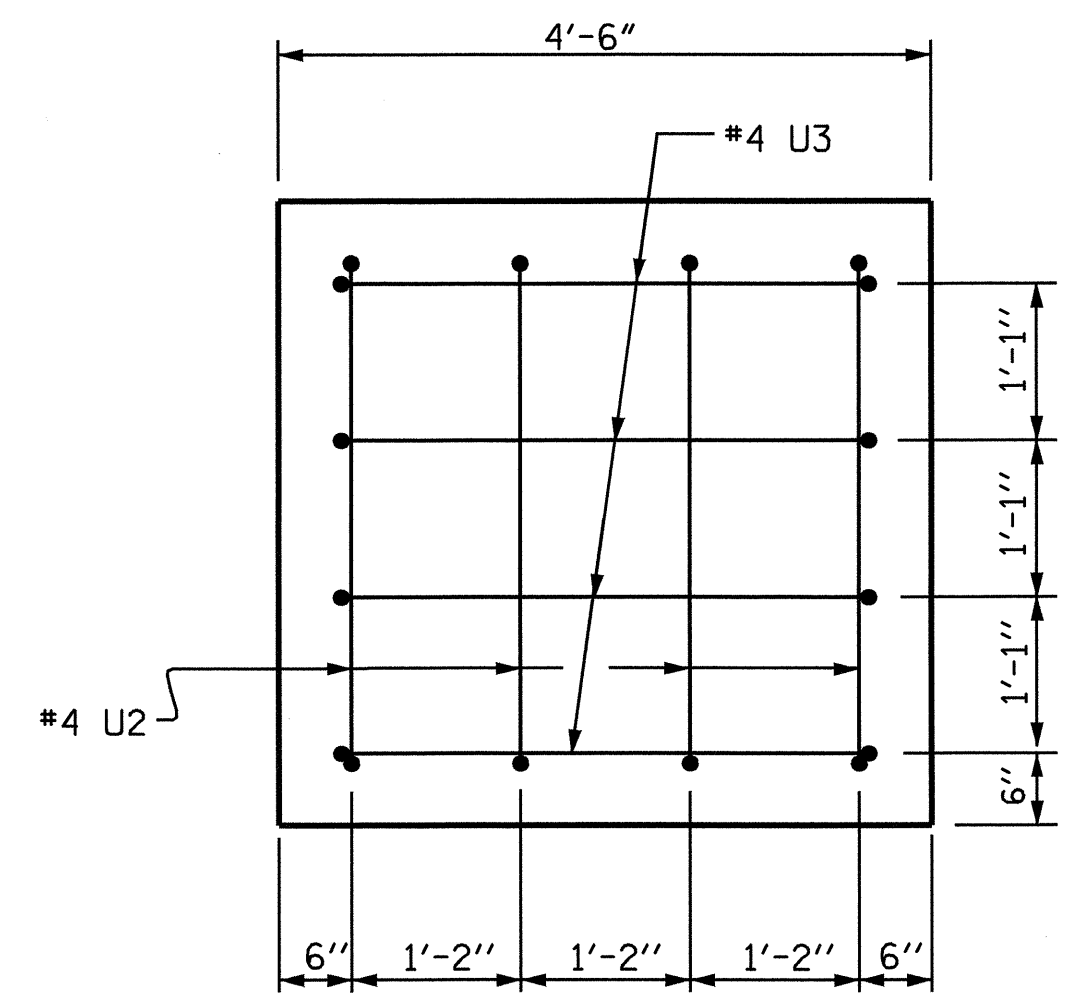
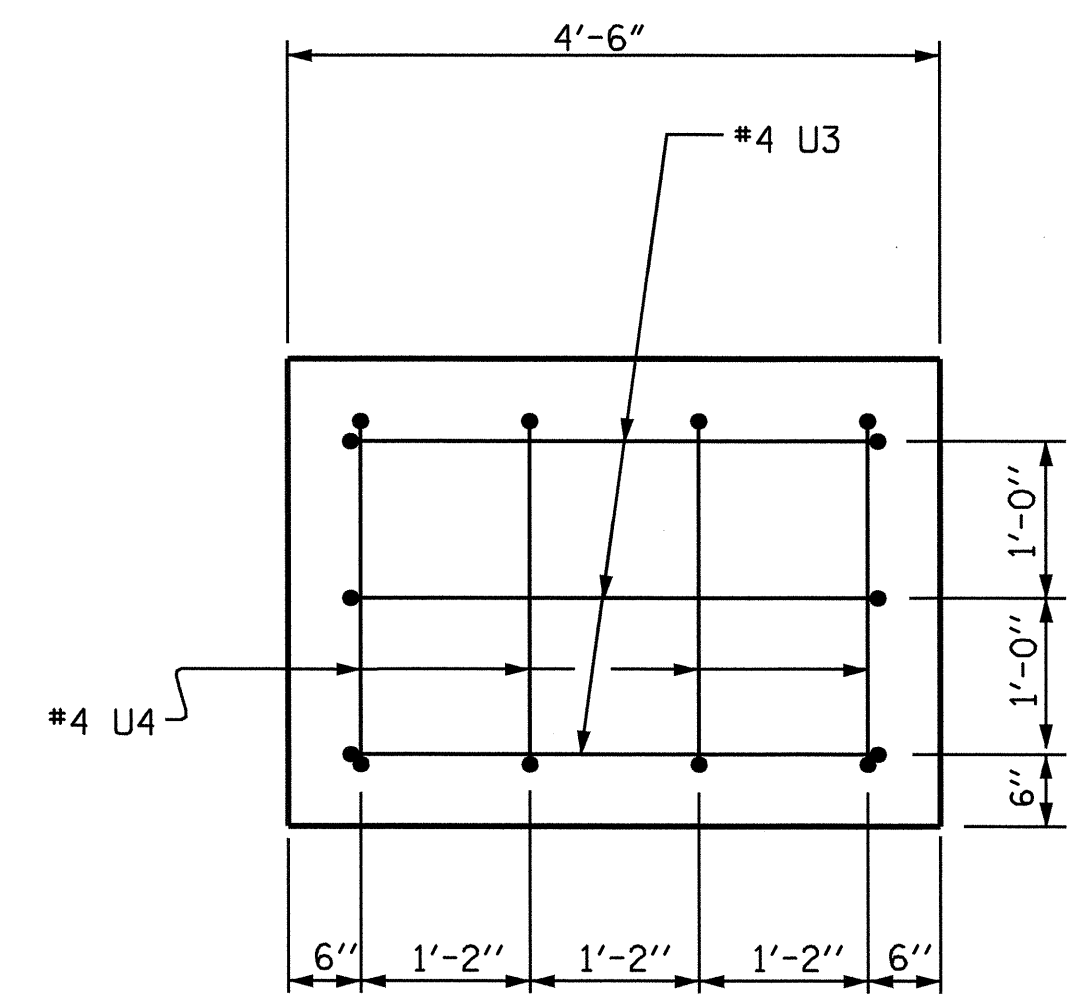


**PLAN OF COLUMNS AND DRILLED PIERS**

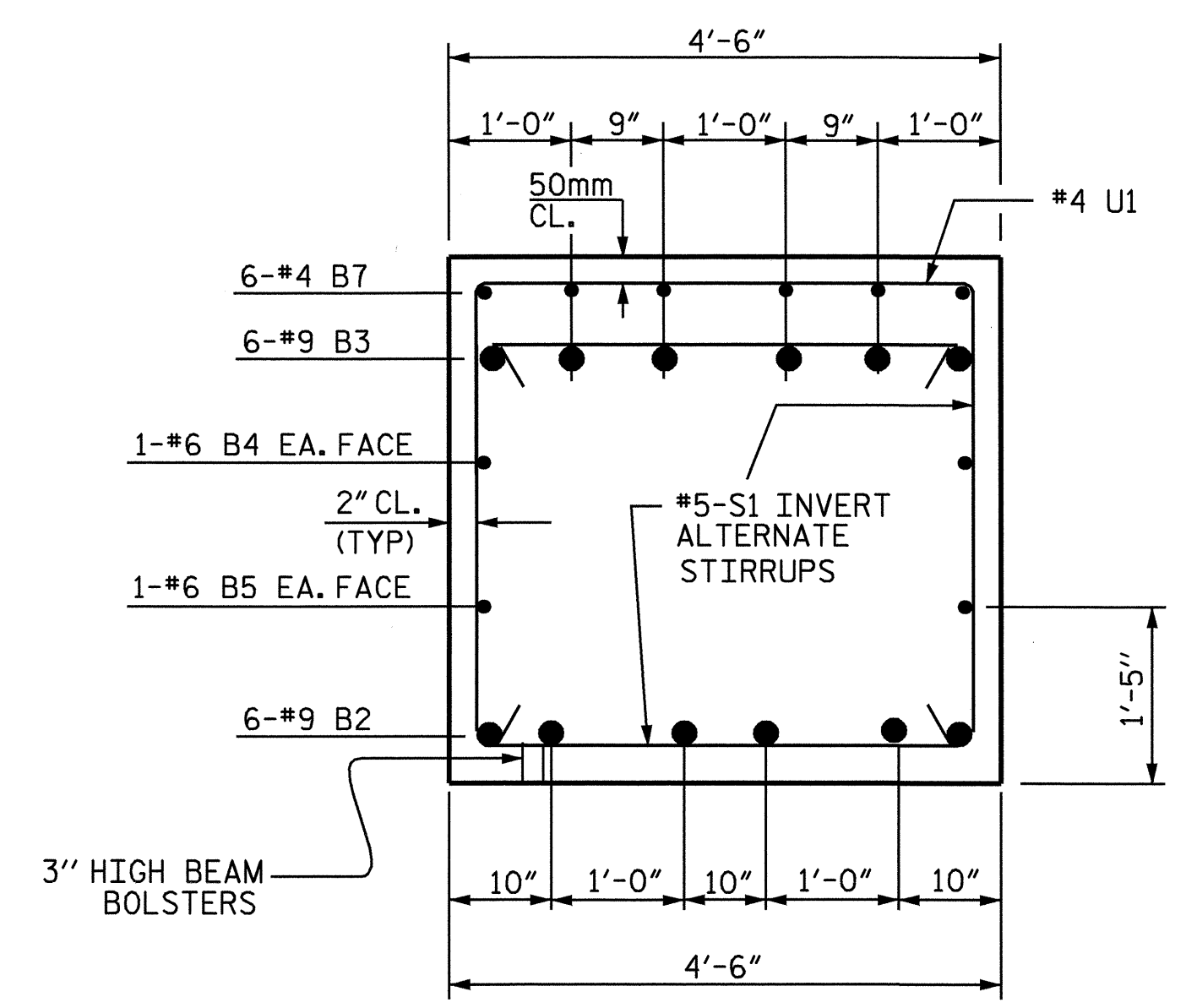
(ALL DIMENSIONS AND REINFORCING STEEL ARE TYPICAL FOR ALL COLUMNS AND DRILL PIERS)



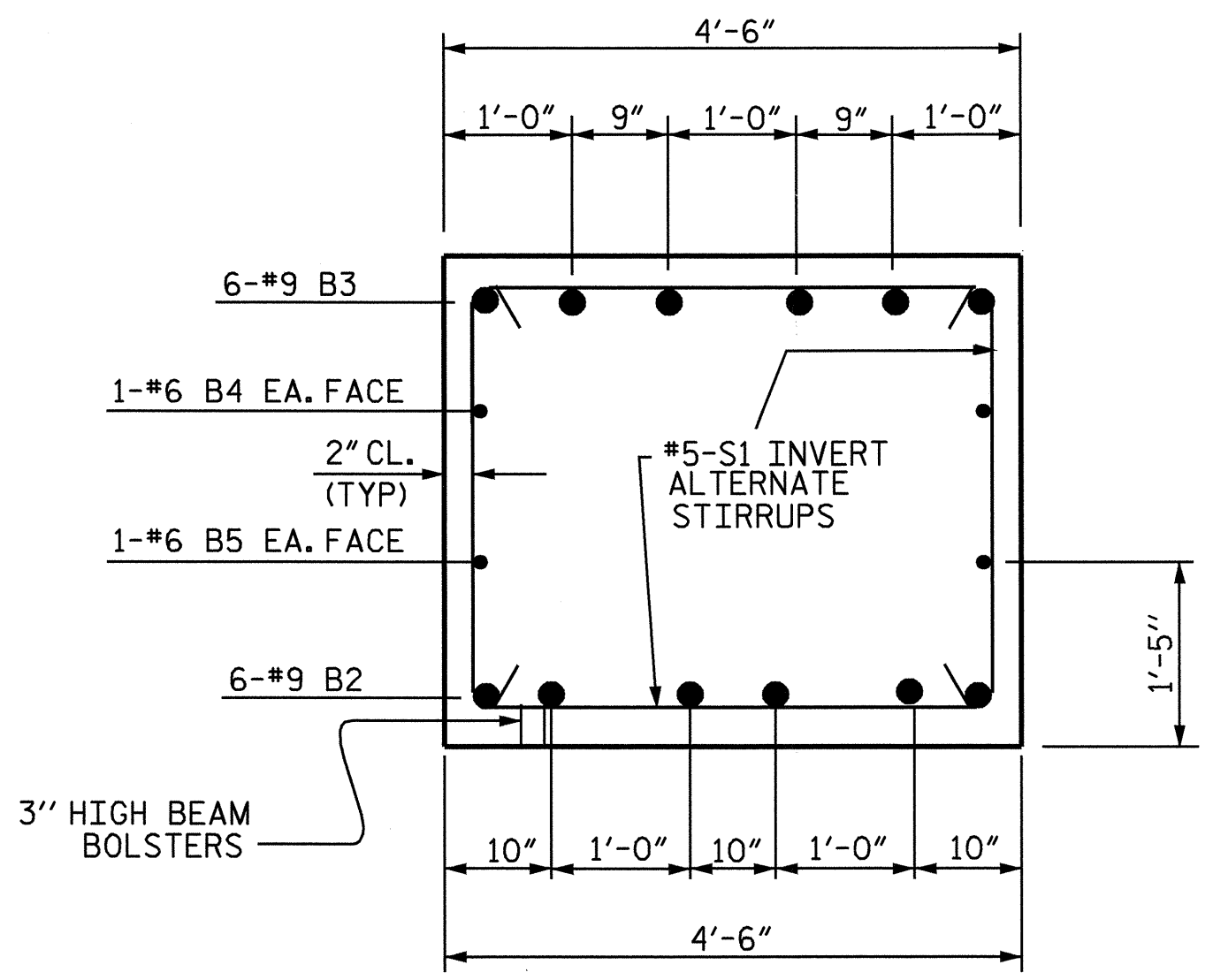
**VIEW X-X**



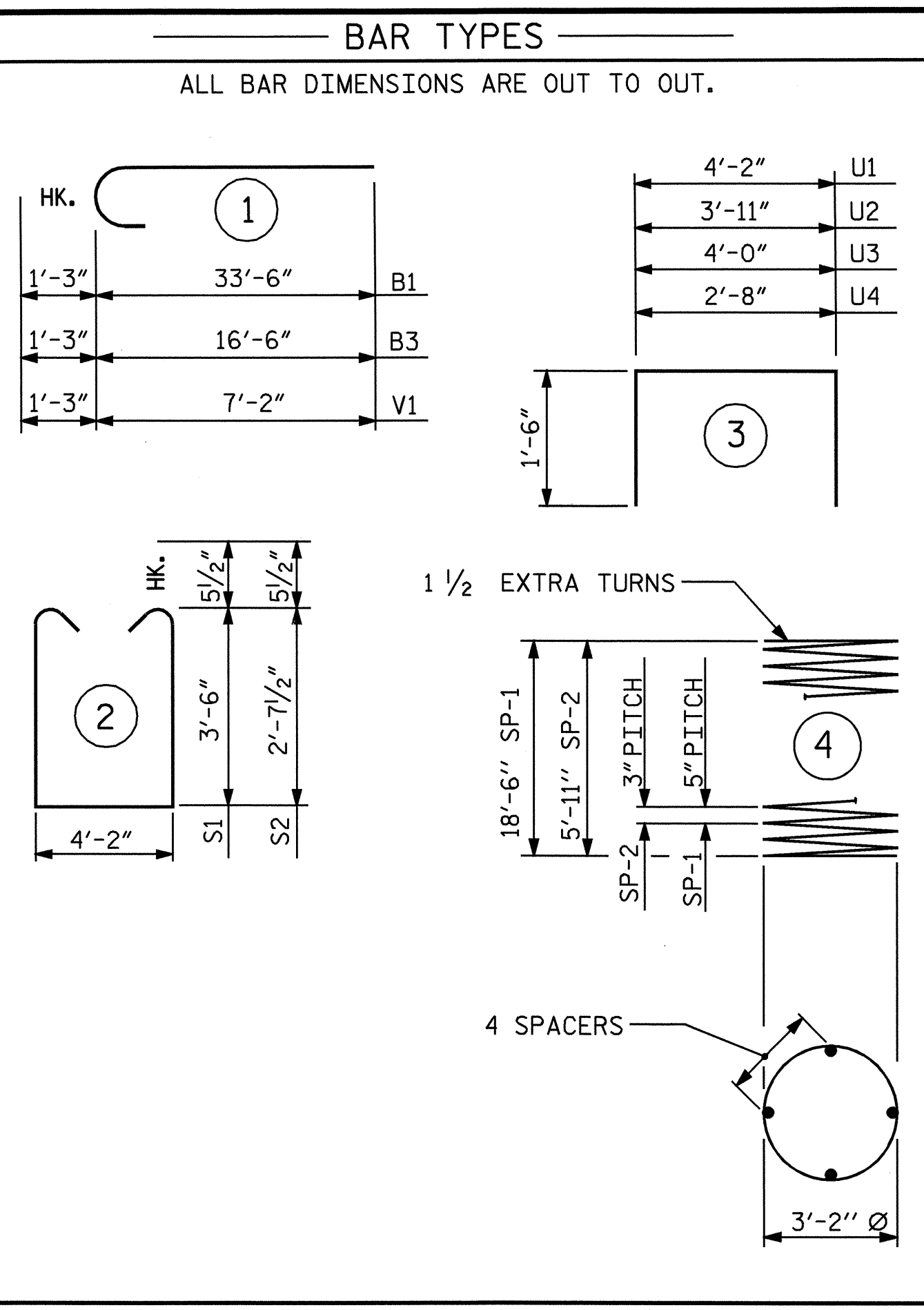
**VIEW Y-Y**



**SECTION A-A**



**SECTION B-B**



\* THE SP-1 SPIRAL REINFORCING STEEL SHALL BE W31 OR D-31 COLD DRAWN WIRE OR #5 PLAIN OR DEFORMED BAR.

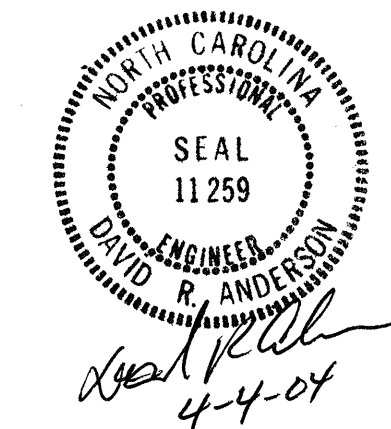
\* THE SP-2 SPIRAL REINFORCING STEEL SHALL BE W20 OR D-20 COLD DRAWN WIRE OR #4 PLAIN OR DEFORMED BAR.

**BILL OF MATERIAL**

BENT #1					
BAR NO.	SIZE	TYPE	LENGTH	WEIGHT	
B1	6	9	1	34'-9"	709
B2	6	9	STR	41'-2"	840
B3	6	9	1	17'-9"	362
B4	2	6	STR	11'-6"	35
B5	2	6	STR	41'-2"	124
B6	6	4	STR	11'-7"	46
B7	6	4	STR	4'-11"	20
B8	3	4	STR	4'-2"	8
M1	42	9	STR	26'-0"	3713
S1	14	5	2	12'-1"	176
S2	27	5	2	10'-4"	291
U1	33	4	3	7'-2"	158
U2	4	4	3	6'-11"	18
U3	7	4	3	7'-0"	33
U4	4	4	3	5'-8"	15
V1	42	9	1	8'-5"	1202
REINFORCING STEEL				LBS.	7,750
SP-1	3	*	4	390'-0"	1220
SP-2	3	**	4	220'-0"	441
SPIRAL COLUMN REINFORCING STEEL					1661
CLASS A CONCRETE					
POUR #2 (COLUMNS)				C.Y.	6.1
POUR #3 (BENT CAP)				C.Y.	25.0
CLASS A CONCRETE TOTAL				C.Y.	31.1
DRILLED PIER QUANTITIES					
DRILLED PIER CONCRETE POUR #1 (DRILLED PIERS)				C.Y.	20.0
3'-6" Ø DRILLED PIERS IN SOIL, LIN. FT.				=	26.25
3'-6" Ø DRILLED PIERS NOT IN SOIL, LIN. FT.				=	30.0
3'-6" Ø PERMANENT STEEL CASING, LIN. FT.				=	26.1

PROJECT NO. B-3649  
GUILFORD COUNTY  
 STATION: 17+39.20 -L-

SHEET 2 OF 2



STATE OF NORTH CAROLINA  
 DEPARTMENT OF TRANSPORTATION  
 RALEIGH

**SUBSTRUCTURE**  
**BENT 1**

REVISIONS					SHEET NO.
NO.	BY:	DATE:	NO.	BY:	DATE:
1			3		
2			4		

TOTAL SHEETS: 32