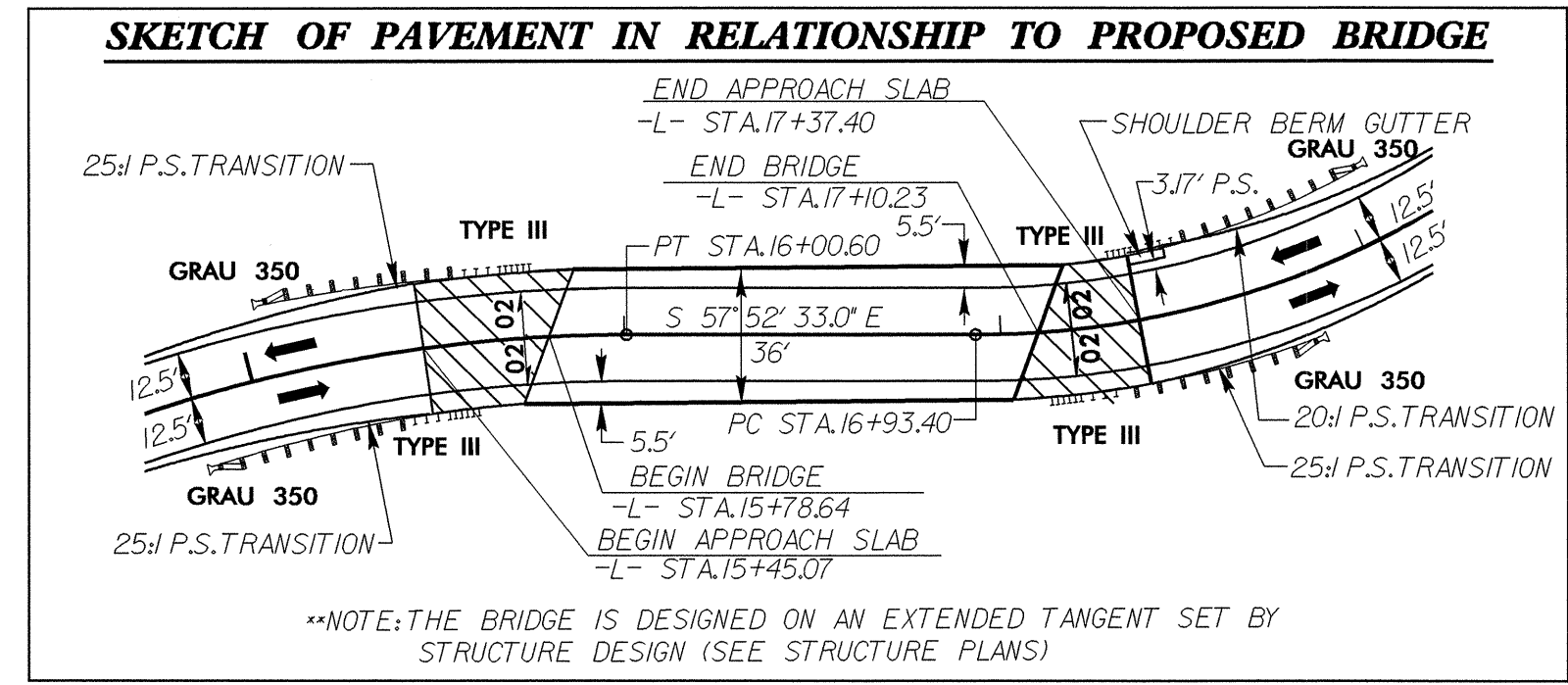


8/17/99

15-JUN-2004 12:23  
C:\Roadway\Project\B3646-RDY\_PSH\_4.DGN

PROJECT REFERENCE NO. B-3646	SHEET NO. 4
RW SHEET NO.	
ROADWAY DESIGN ENGINEER	HYDRAULICS ENGINEER

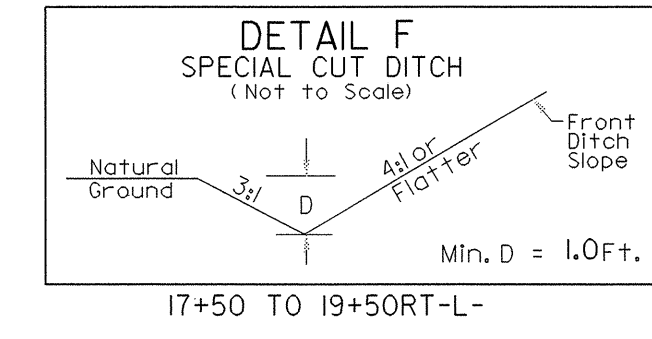
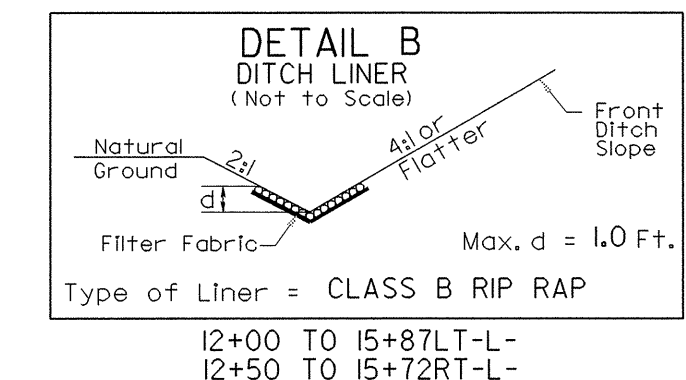
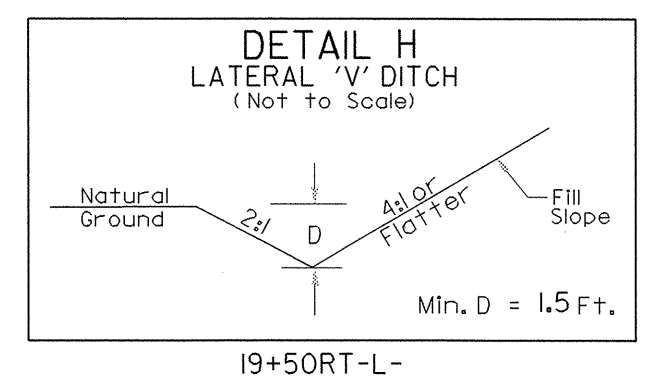
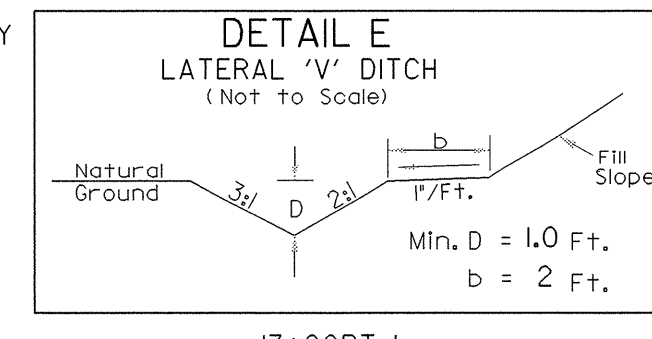
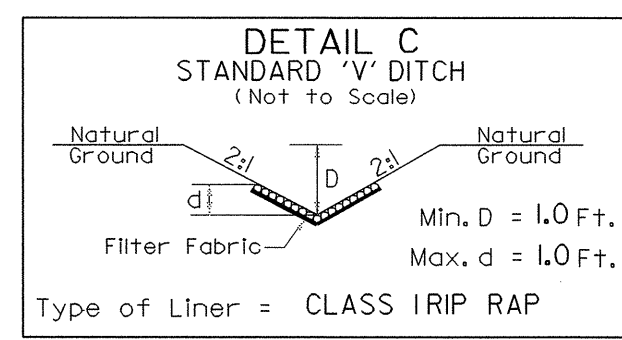
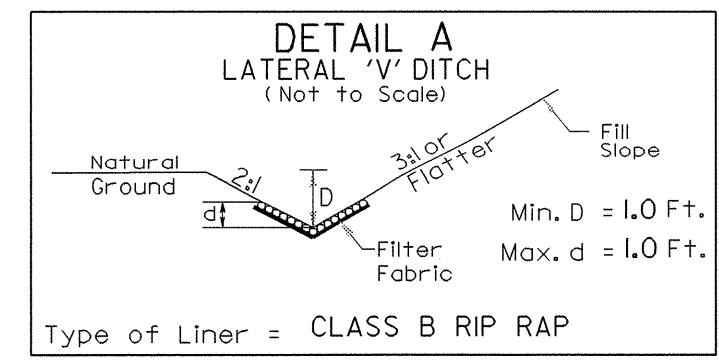
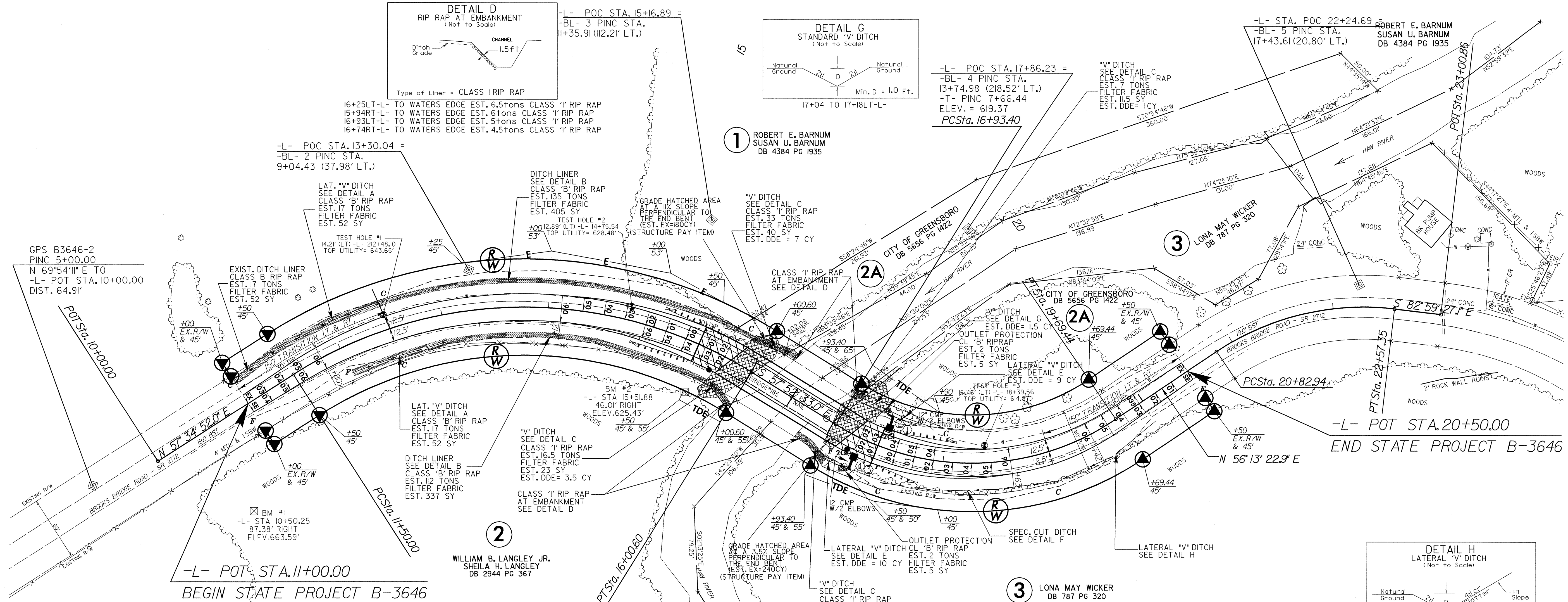
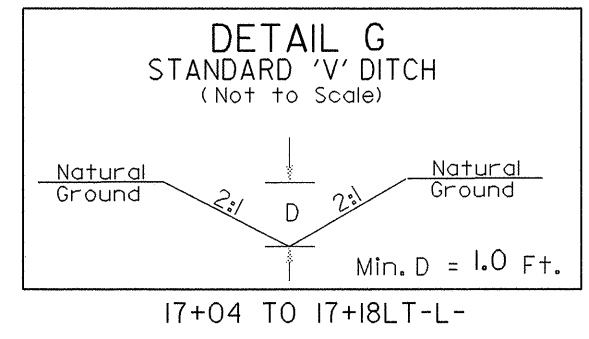
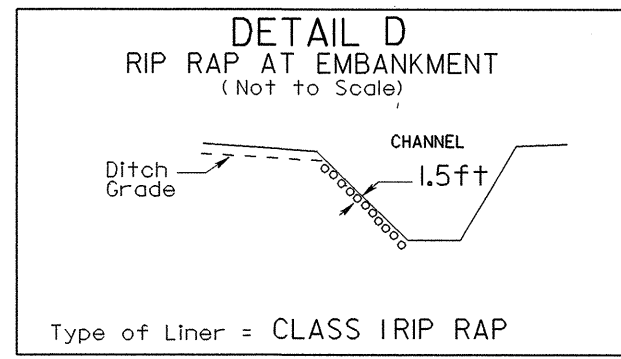


NAD 83

DESIGN EXCEPTION REQUIRED TO REDUCE DESIGN SPEED FROM 60 MPH TO 25 MPH.

-L-		
PI Sta 14+02.59 Δ = 64° 32' 35.0" (RT) D = 14' 19" 26.2" L = 450.60' T = 252.59' R = 400.00' S.E. = 0.06 (SEE PLANS) INC. = 20' 35 MPH	PI Sta 18+48.96 Δ = 65° 54' 04.1" (LT) D = 23' 52" 23.7" L = 276.05' T = 155.56' R = 240.00' S.E. = 0.06 (SEE PLANS) INC. = 18' 25 MPH	PI Sta 21+74.02 Δ = 40° 47' 10.0" (RT) D = 23' 23" 09.7" L = 174.40' T = 91.08' R = 245.00' 25 MPH

SHOULDER BERM GUTTER  
-L- STATIONS 17+37.40 - 17+47.78 LT



FOR -L- PROFILE  
SEE SHEET 5

FOR STRUCTURE PLANS  
SEE SHEETS S-1 THRU S-28

REVISIONS