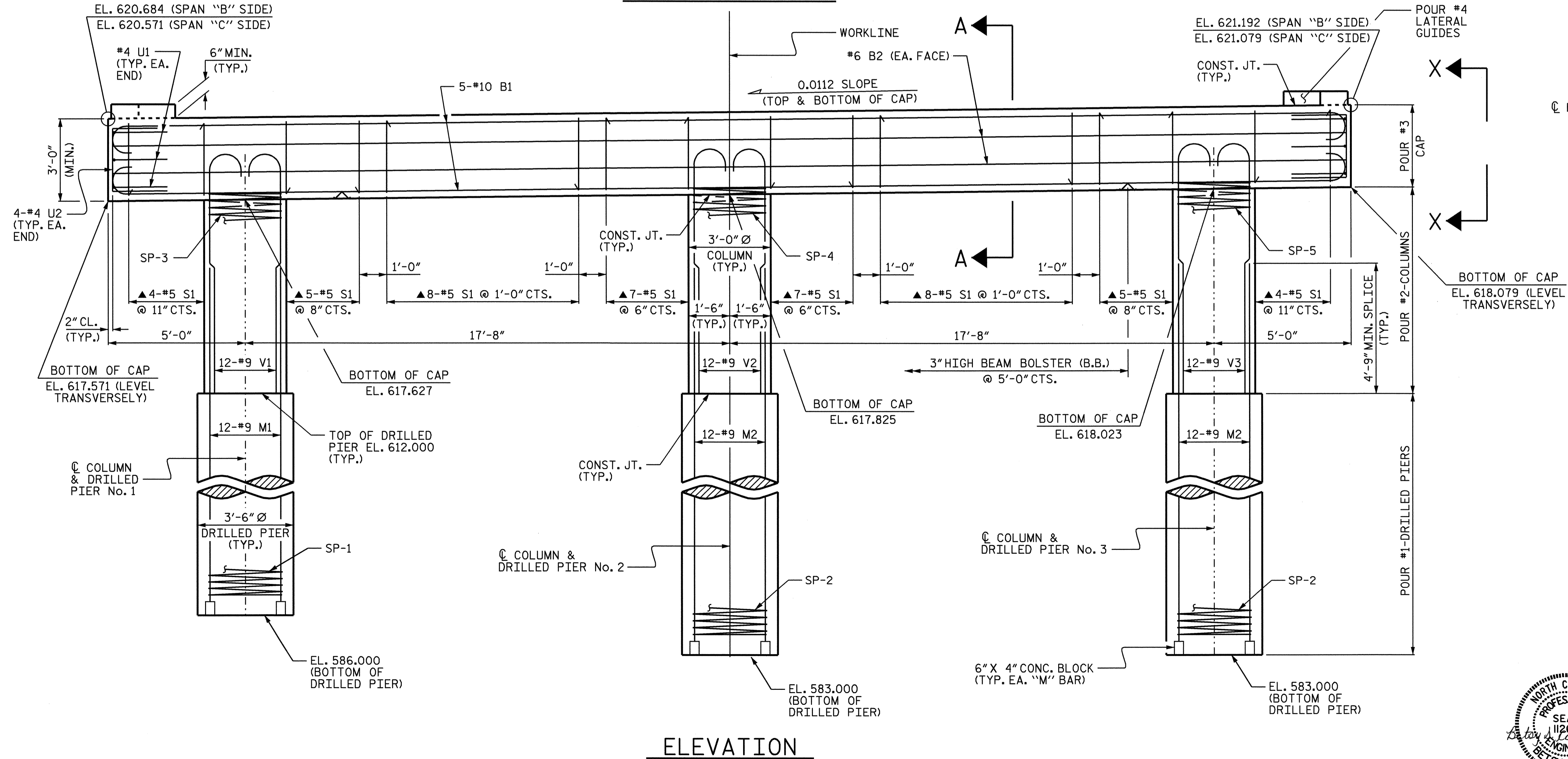
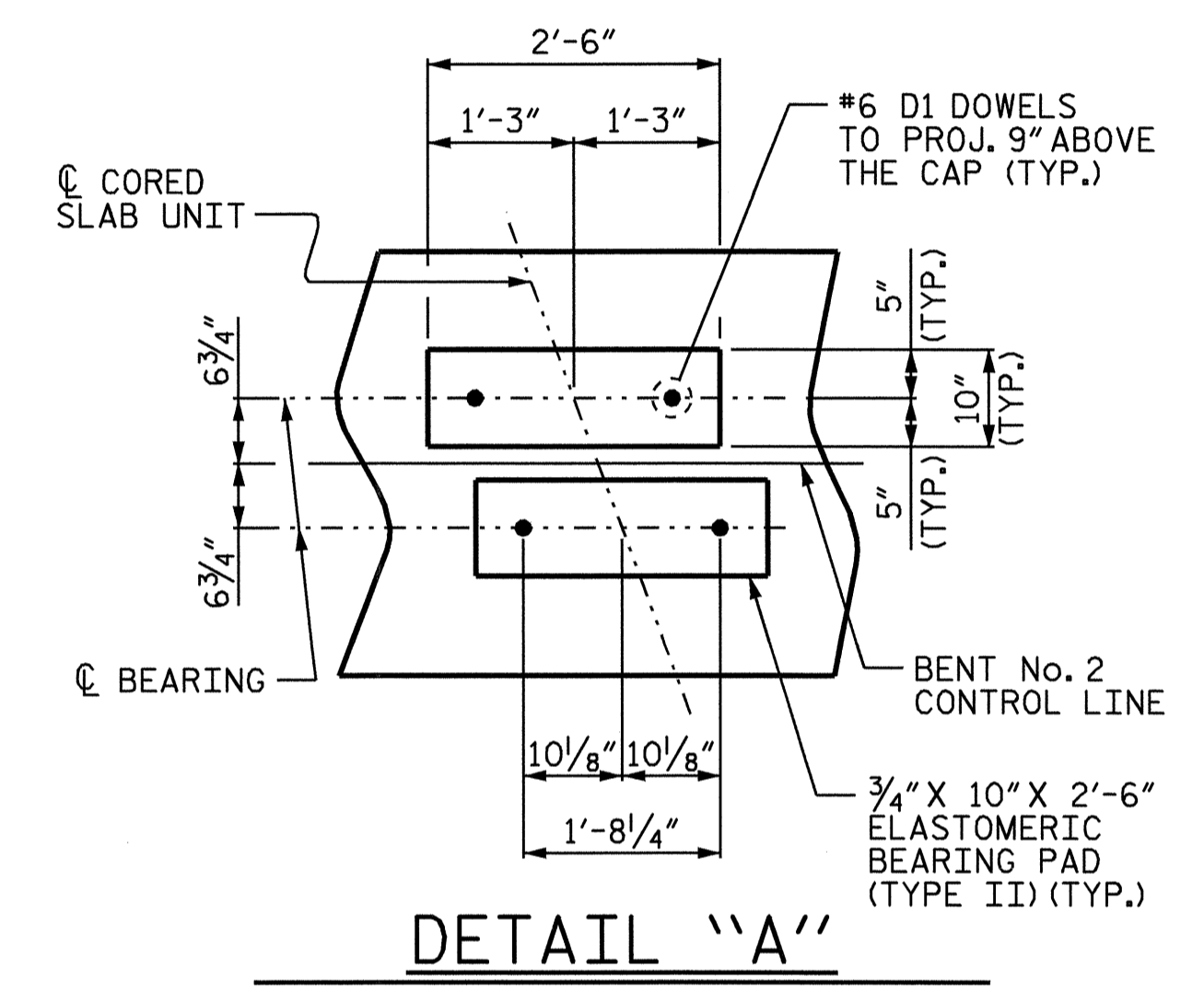
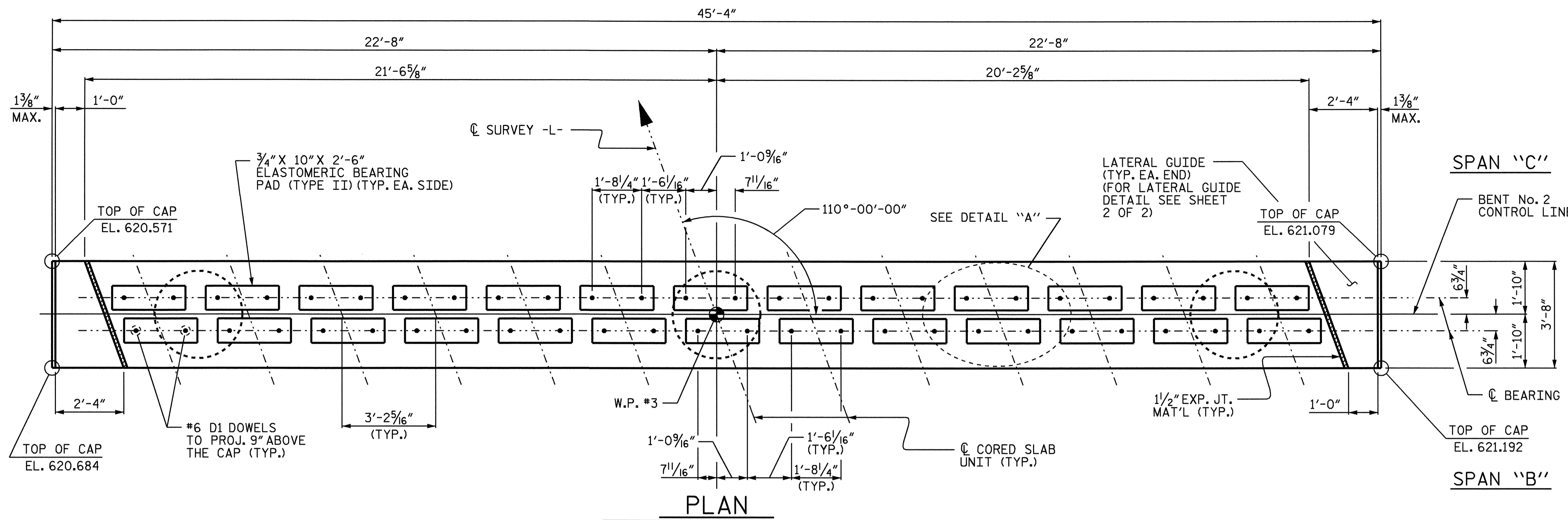


NOTES:

- STIRRUPS IN CAP MAY BE SHIFTED AS NECESSARY TO CLEAR DOWELS.
- THE LATERAL GUIDE AT EACH END OF THE CAP IS NOT TO BE POURED UNTIL AFTER THE CORED SLAB UNITS ARE IN PLACE.
- ▲ INVERT ALTERNATE STIRRUPS AS SHOWN.
- FOR DRILLED PIERS, SEE SPECIAL PROVISIONS.
- ALL STEEL IN THE DRILLED PIERS IS INCLUDED IN THE PAY ITEMS FOR "REINFORCING STEEL" AND "SPIRAL COLUMN REINFORCING STEEL".
- HOOKS ON "V" BARS MAY BE TURNED AS NECESSARY FOR PLACING REINFORCING STEEL.
- THE CONTRACTOR'S ATTENTION IS CALLED TO THE FACT THAT THE LONGITUDINAL REINFORCEMENT FOR THE DRILLED PIERS IS DETAILED WITH 3 FEET OF EXTRA LENGTH.
- FOR PERMANENT STEEL CASING, SEE SPECIAL PROVISION FOR DRILLED PIERS.



PROJECT NO. B-3646
GUILFORD COUNTY
 STATION: 16+44.43 -L-

SHEET 1 OF 2

STATE OF NORTH CAROLINA DEPARTMENT OF TRANSPORTATION RALEIGH					
SUBSTRUCTURE BENT No. 2					
REVISIONS					
NO.	BY:	DATE:	NO.	BY:	DATE:
1			3		
2			4		

SHEET NO. S-16
TOTAL SHEETS 28



DRAWN BY: P.C. BREWER DATE: 3/17/04
 CHECKED BY: M. BRITT DATE: 4/2/04

16-JUN-2004 09:18
 W:\sqad\vb3646\pbrewer\lncrostation\B3646.sd_B2.01.dgn
 pbrewer