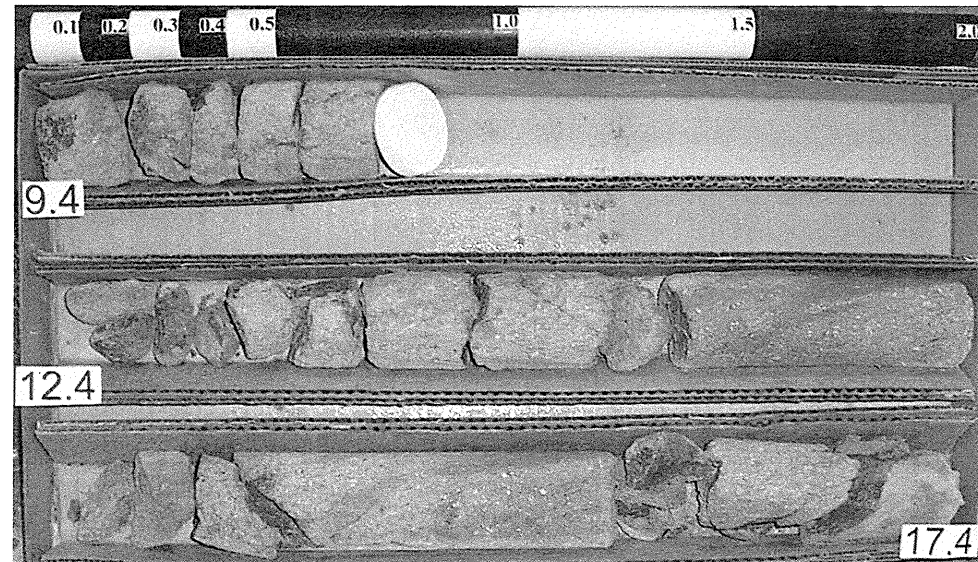


CORE PHOTOGRAPHS

Bridge No. 185 over the Haw River on SR 2712
NCDOT Project No. 8.2495201 (B-3646)

B1-B



Box 1 of 6



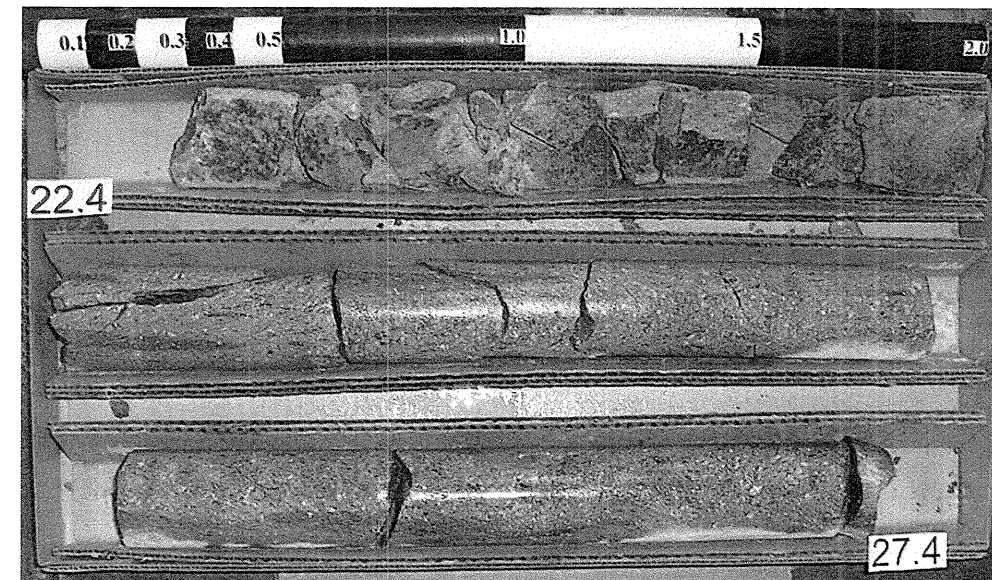
Box 2 of 6

(SCALE = 1:4)

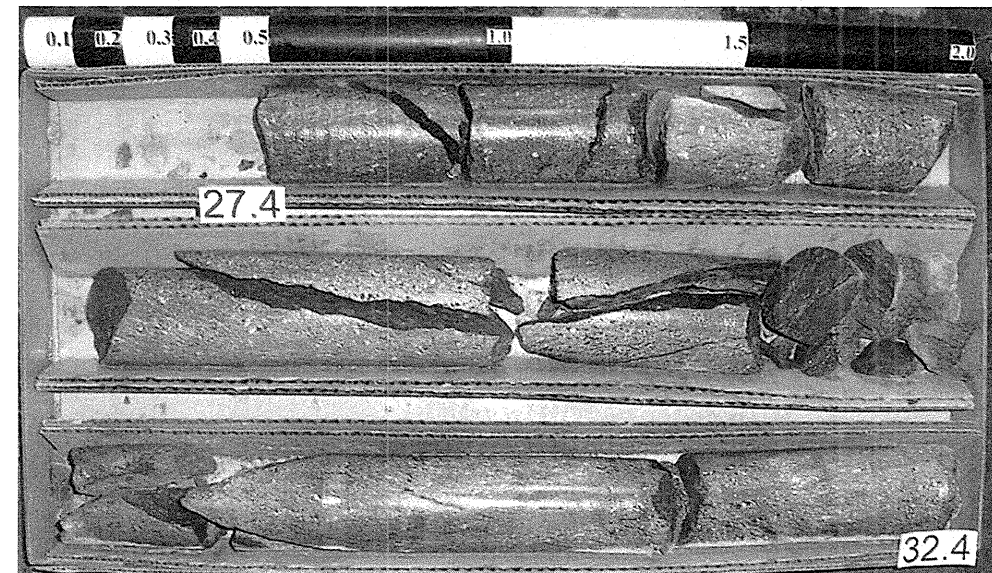
CORE PHOTOGRAPHS

Bridge No. 185 over the Haw River on SR 2712
NCDOT Project No. 8.2495201 (B-3646)

B1-B



Box 3 of 6



Box 4 of 6

(SCALE = 1:4)