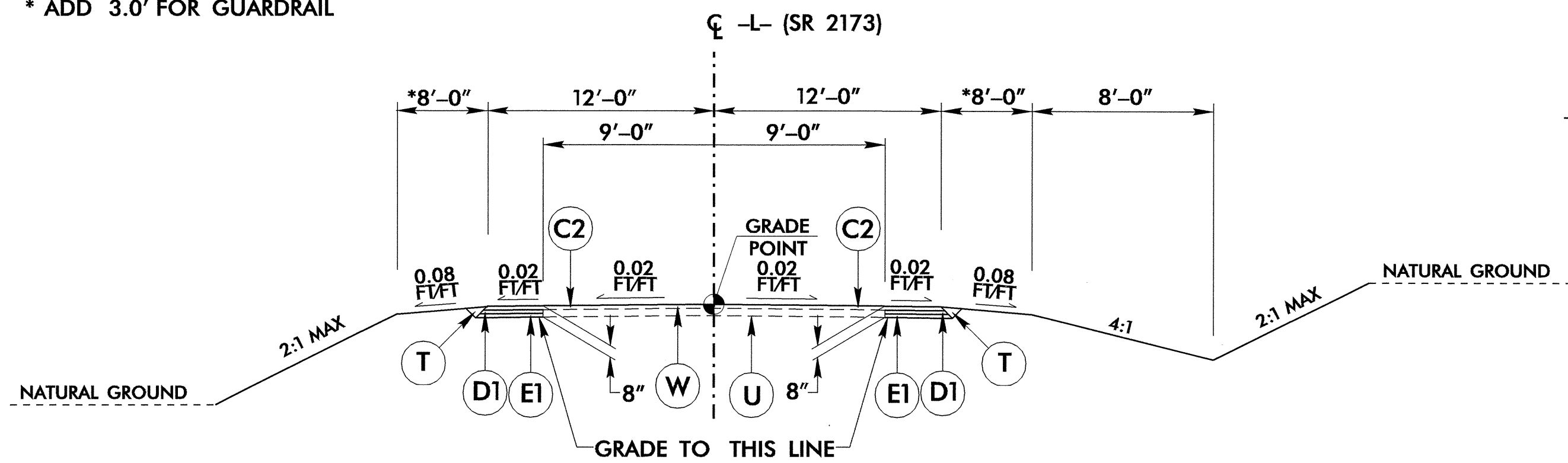


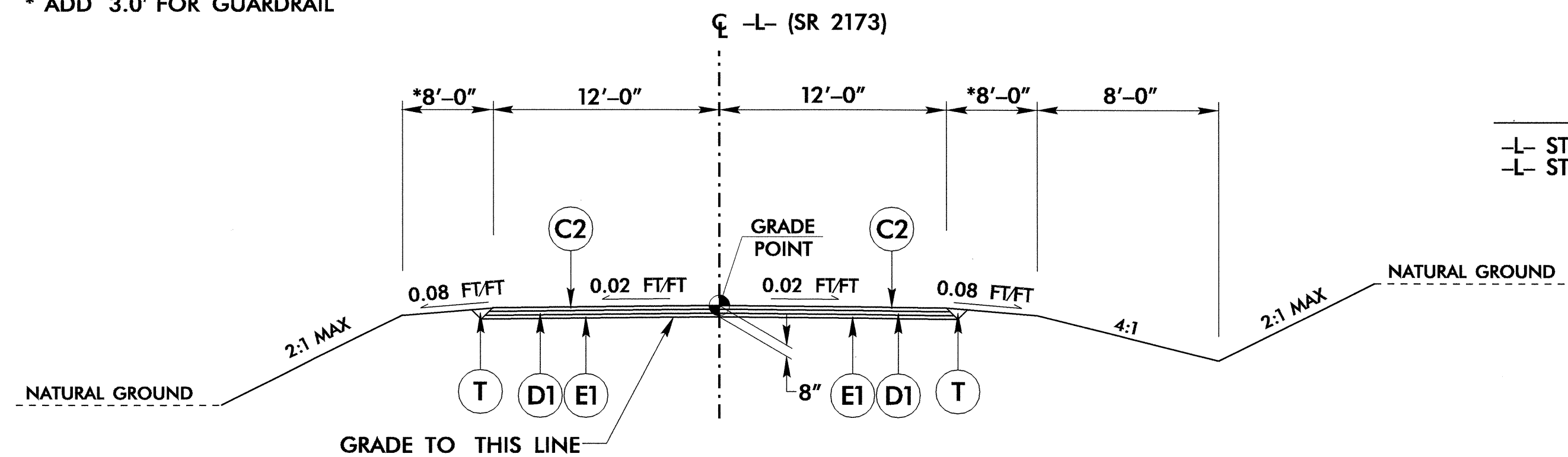
NOTE: PAVE RIGHT SHOULDER OUT TO GUARDRAIL:
STA 15+92 TO 18+66 (APPR SLAB) &
STA 20+65 (APPR SLAB) TO 23+72
* ADD 3.0' FOR GUARDRAIL



USE TYPICAL SECTION NO. 1
-L- STA. 13+00.00 TO 17+00.00
-L- STA. 26+75.00 TO 31+50.00

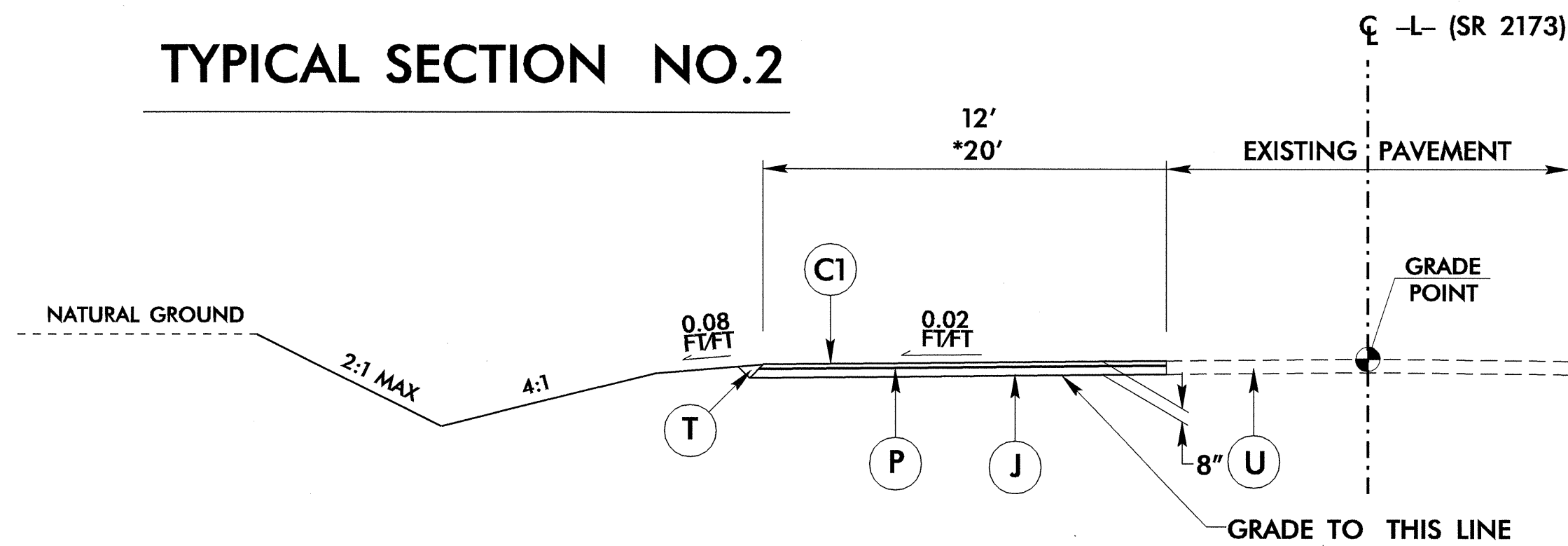
TYPICAL SECTION NO.1

NOTE: PAVE RIGHT SHOULDER OUT TO GUARDRAIL:
STA 15+92 TO 18+66 (APPR SLAB) &
STA 20+65 (APPR SLAB) TO 23+72
* ADD 3.0' FOR GUARDRAIL



USE TYPICAL SECTION NO. 2
-L- STA. 17+00.00 TO STA. 19+10.00 (BGN BRG)
-L- STA. 20+50.00 (END BRG) TO 26+75.00

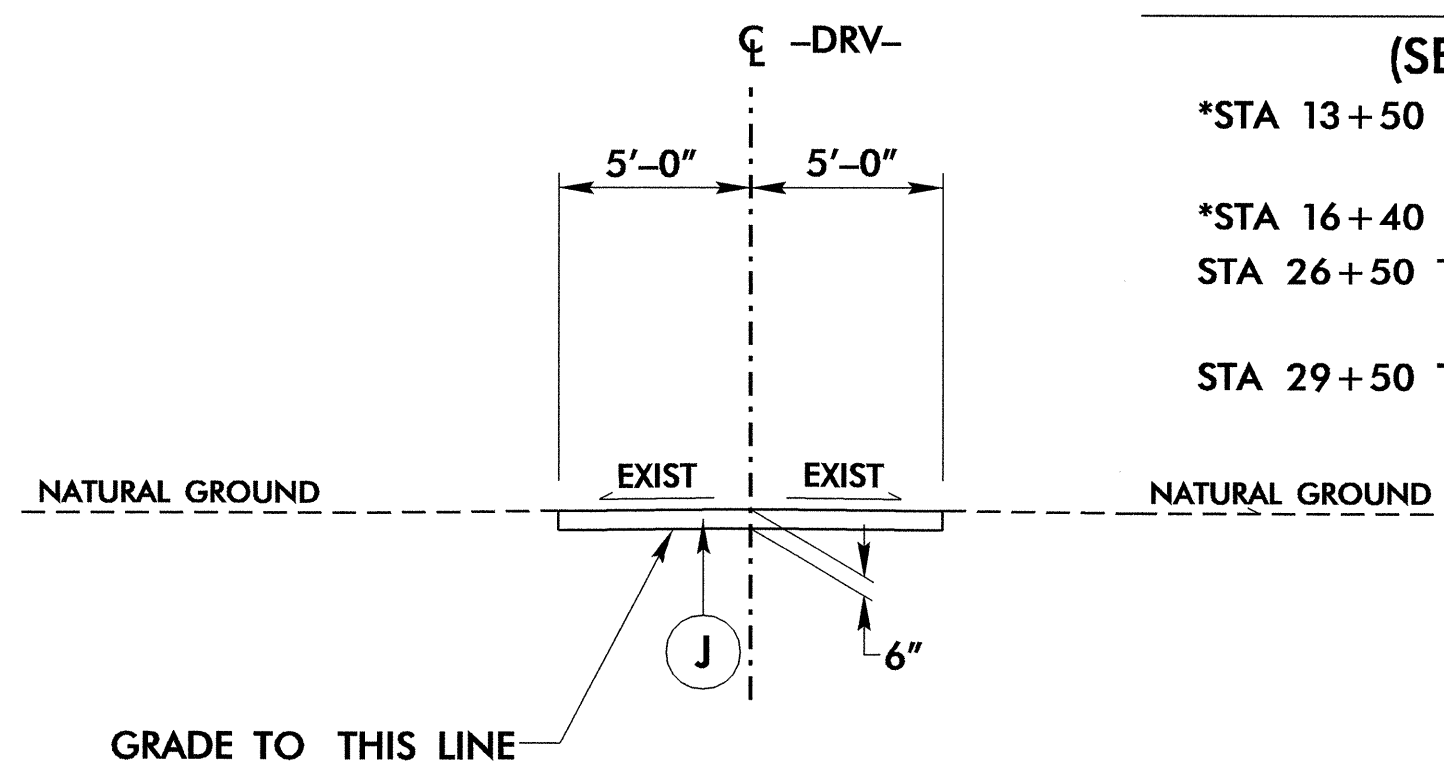
TYPICAL SECTION NO.2



TYPICAL SECTION TEMPORARY DETOUR

(SEE TRAFFIC CONTROL PLANS FOR LAYOUT)

- *STA 13+50 TO 14+50 - TRANSITION FROM EXISTING PAVEMENT TO TYPICAL
- *STA 14+50 TO 16+40
- *STA 16+40 TO 17+40 - TRANSITION FROM TYPICAL TO EXISTING PAVEMENT
- STA 26+50 TO 27+50 - TRANSITION FROM EXISTING PAVEMENT TO TYPICAL
- STA 27+50 TO 29+50
- STA 29+50 TO 30+50 - TRANSITION FROM TYPICAL TO EXISTING PAVEMENT



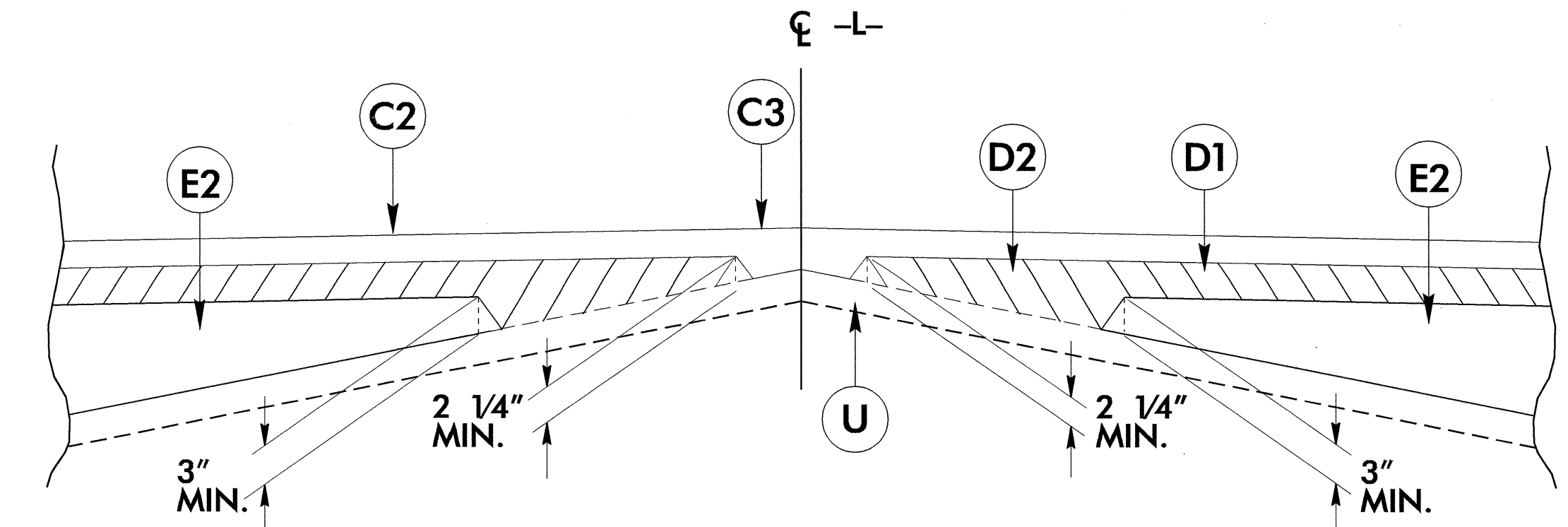
USE TYPICAL SECTION NO. 3
-DRV- STA. 10+12.00 TO STA. 12+62.05

TYPICAL SECTION NO.3

FINAL PAVEMENT SCHEDULE

C1	PROP. APPROX. 2" ASPHALT CONCRETE SURFACE COURSE, TYPE S9.5A, AT AN AVERAGE RATE OF 112 LBS. PER SQ. YD. IN EACH OF TWO LAYERS.
C2	PROP. APPROX. 2.5" ASPHALT CONCRETE SURFACE COURSE, TYPE S9.5A, AT AN AVERAGE RATE OF 140 LBS. PER SQ. YD. IN EACH OF TWO LAYERS.
C3	PROP. VAR. DEPTH ASPHALT CONCRETE SURFACE COURSE, TYPE S9.5A, AT AN AVERAGE RATE OF 112 LBS. PER SQ. YD. PER 1" DEPTH. TO BE PLACED IN LAYERS NOT TO EXCEED 1 1/2" IN DEPTH.
D1	PROP. APPROX. 2.5" ASPHALT CONCRETE INTERMEDIATE COURSE, TYPE I19.0B, AT AN AVERAGE RATE OF 285 LBS. PER SQ. YD.
D2	PROP. VAR. DEPTH ASPHALT CONCRETE INTERMEDIATE COURSE, TYPE I19.0B, AT AN AVERAGE RATE OF 114 LBS. PER SQ. YD. PER 1" DEPTH, TO BE PLACED IN LAYERS NOT LESS THAN 2 1/4" IN DEPTH OR GREATER THAN 4" IN DEPTH.
E1	PROP. APPROX. 3" ASPHALT CONCRETE BASE COURSE, TYPE B25.0B, AT AN AVERAGE RATE OF 342 LBS. PER SQ. YD.
E2	PROP. VAR. DEPTH ASPHALT CONCRETE BASE COURSE, TYPE B25.0B, AT AN AVERAGE RATE OF 114 LBS. PER SQ. YD. PER 1" DEPTH. TO BE PLACED IN LAYERS NOT LESS THAN 3" IN DEPTH OR GREATER THAN 5 1/2" IN DEPTH.
J	PROP. 6" AGGREGATE BASE COURSE.
P	PRIME COAT
T	EARTH MATERIAL.
U	EXISTING PAVEMENT
W	VARIABLE DEPTH ASPHALT PAVEMENT. (SEE WEDGING DETAIL)

NOTE: PAVEMENT EDGE SLOPES ARE 1:1 UNLESS SHOWN OTHERWISE.



Detail Showing Method of Wedging

7/12/99
11-MAY-2004 14:56
RA:Roadway/Proj/b3310.rwp
JR:Ratfield AT R0187132