

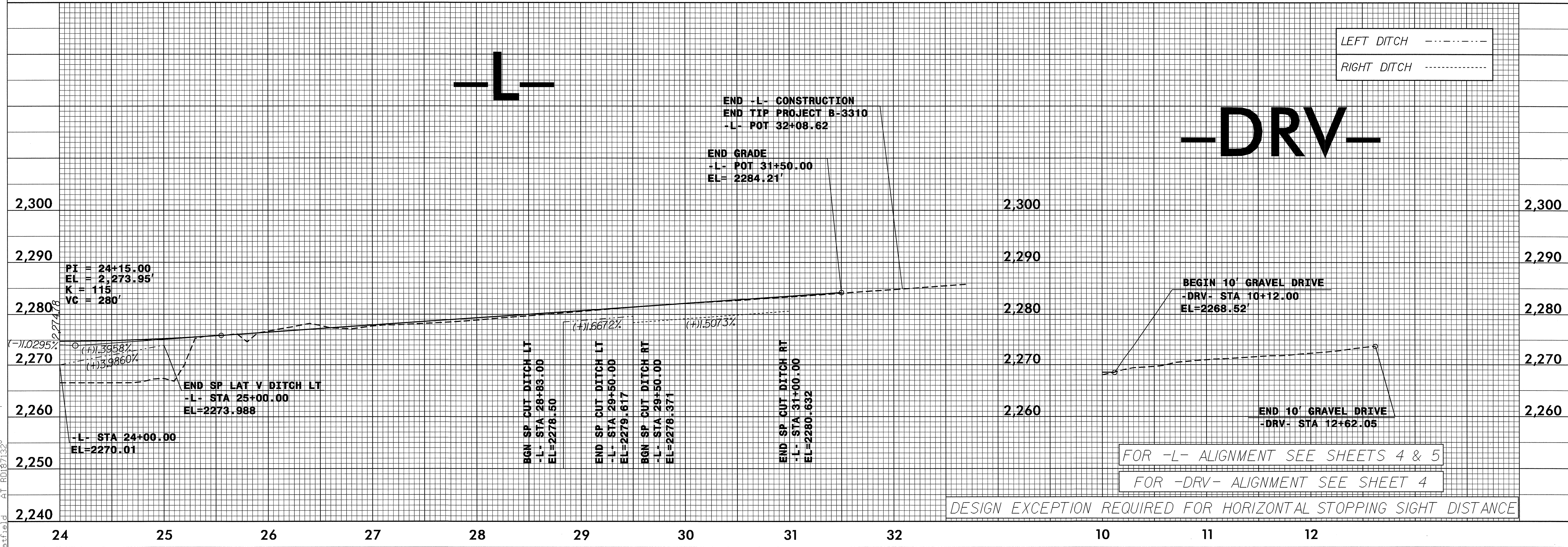
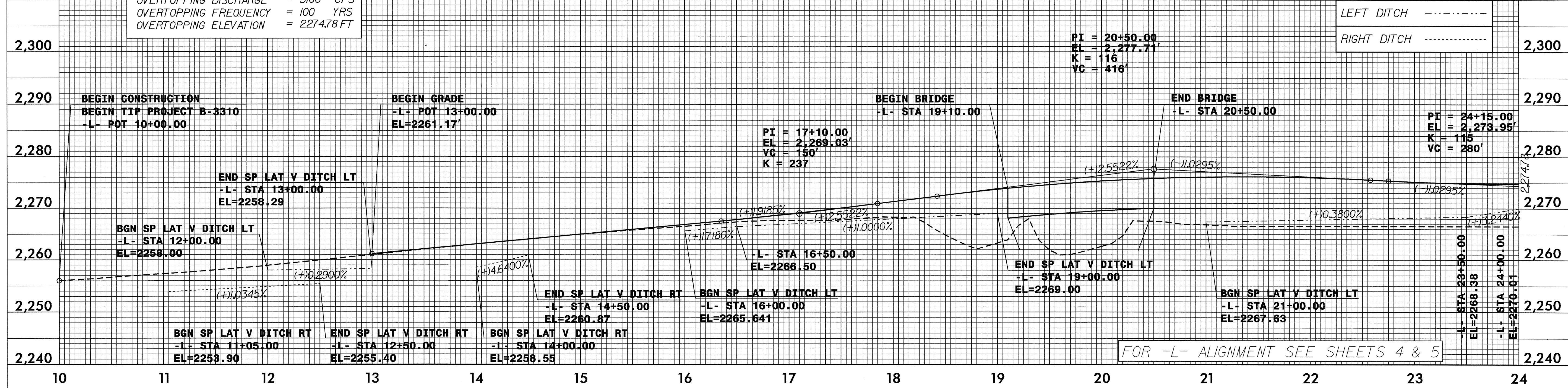
5/28/99

PROJECT REFERENCE NO. B-3310	SHEET NO. 6
ROADWAY DESIGN ENGINEER	HYDRAULICS ENGINEER

STRUCTURE HYDRAULIC DATA

DESIGN DISCHARGE = 3700 CFS
 DESIGN FREQUENCY = 25 YRS
 DESIGN HW ELEVATION = 2269.78 FT
 BASE DISCHARGE = 5100 CFS
 BASE YEAR FREQUENCY = 100 YRS
 BASE HW ELEVATION = 2270.77 FT
 OVERTOPPING DISCHARGE = 5100 CFS
 OVERTOPPING FREQUENCY = 100 YRS
 OVERTOPPING ELEVATION = 2274.78 FT

-BM-2
 N 752395 E 980818
 -L- STA 19+19.12 LEFT
 EL = 2267.61'



II-MAY-2004 14:55 P:\p\j\32j\63310.p1
JRHatfield