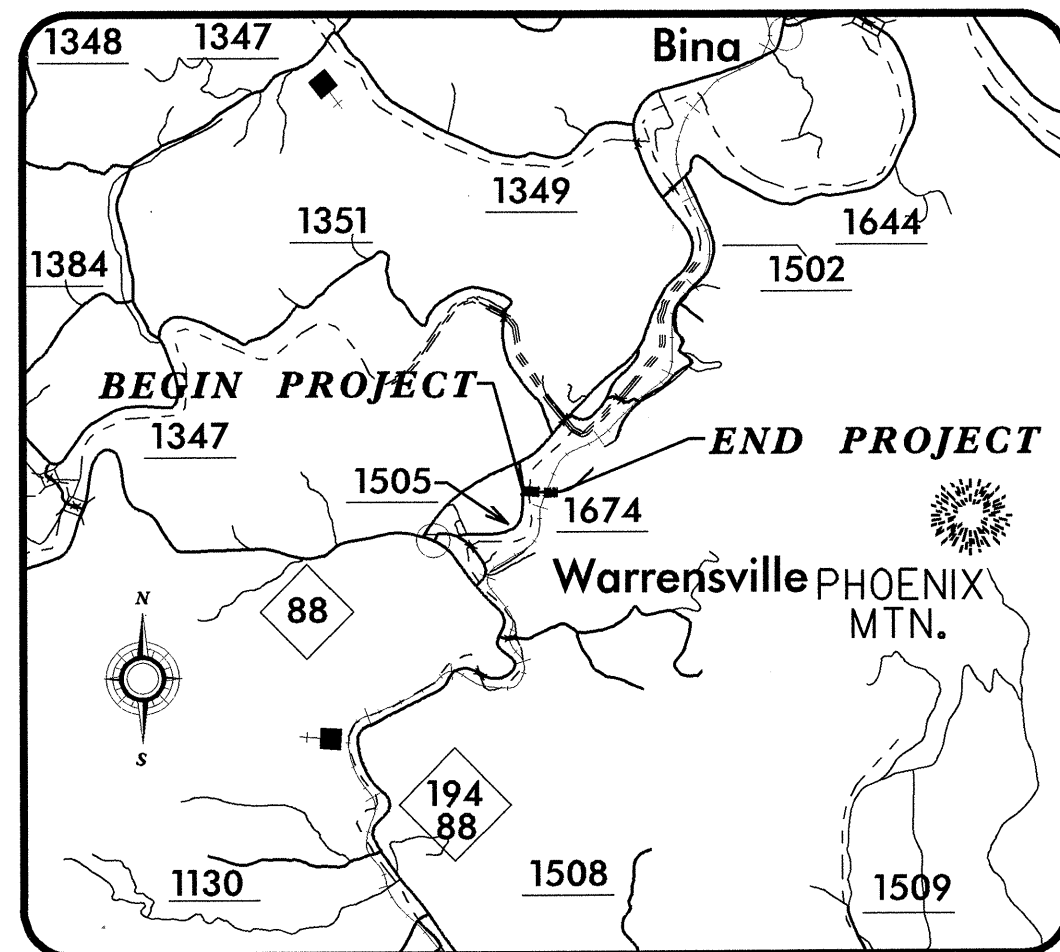


09/08/09

See Sheet 1-A For Index of Sheets



VICINITY MAP

100% SUBMITTAL

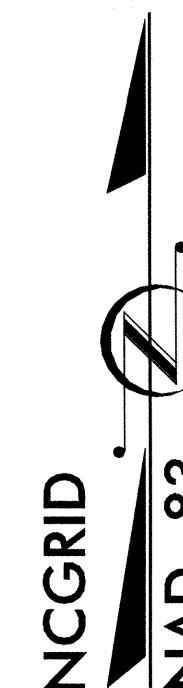
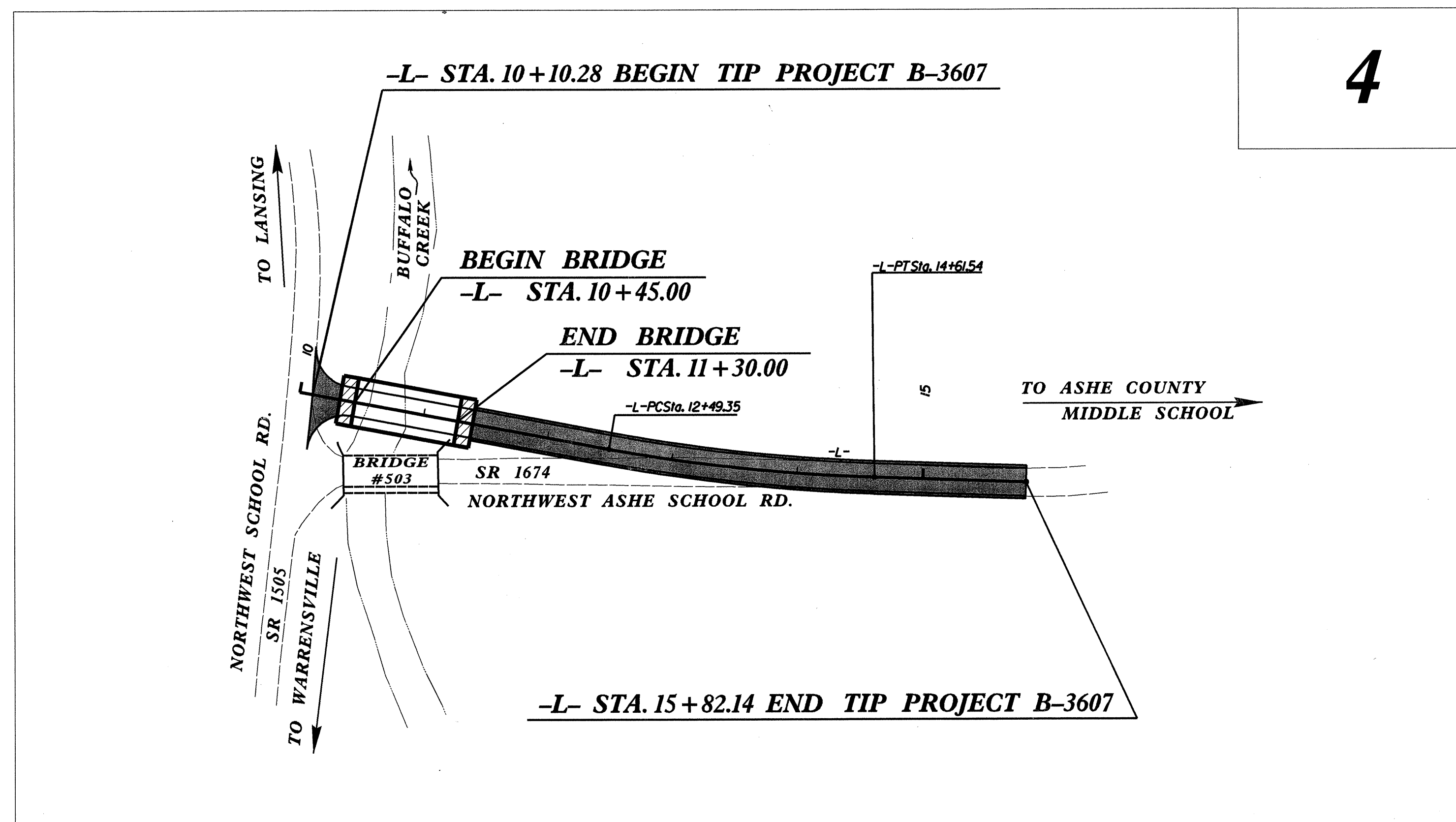
STATE OF NORTH CAROLINA
DIVISION OF HIGHWAYS

ASHE COUNTY

LOCATION: BRIDGE NO. 503 ON SR 1674 (NORTHWEST ASHE SCHOOL RD.)
OVER BUFFALO CREEK

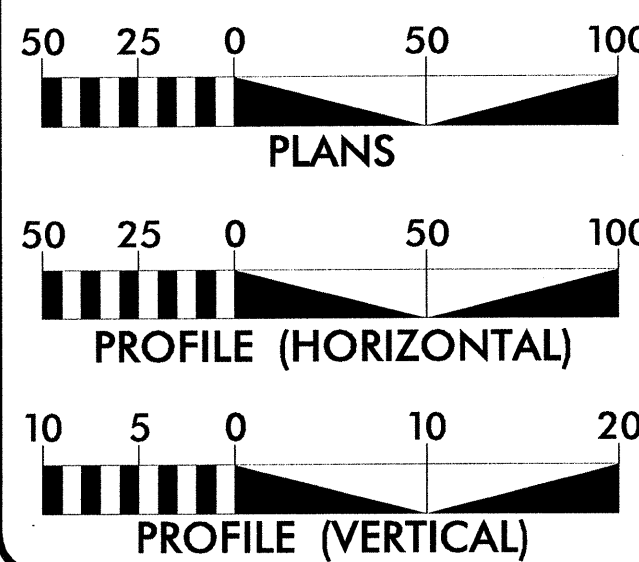
TYPE OF WORK: GRADING, STRUCTURES, DRAINAGE, & PAVING

STATE	STATE PROJECT REFERENCE NO.	SHEET NO.	TOTAL SHEETS
N.C.	B-3607	1	
STATE PROJ. NO.	F.A. PROJ. NO.	DESCRIPTION	
33160.1.1	BRZ-1674(3)	PE	
33160.2.2	BRZ-1674(3)	RW	
33160.3.2	BRZ-1674(4)	CONST.	



CONTRACT: C200843 TIP PROJECT: B-3607

GRAPHIC SCALES



DESIGN DATA

ADT 2004 = 1,070
ADT 2025 = 1,800
DHV = 6 %
D = 60 %
T = 6 % *
V = 40 MPH
* TTST 1 % DUAL 5 %

PROJECT LENGTH

Length Roadway TIP Project B-3607 = 0.092 mile
Length Structure TIP Project B-3607 = 0.016 mile
Total Length TIP Project B-3607 = 0.108 mile



PLANS PREPARED BY:
RUMMEL, KLEPPER & KAHL, LLP
consulting engineers
5800 FARRINGTON PLACE SUITE 105
RALEIGH, NORTH CAROLINA 27609-3960
FOR DIVISION OF HIGHWAYS

2002 STANDARD SPECIFICATIONS

RIGHT OF WAY DATE:
MAY 30, 2003
LETTING DATE:
AUGUST 17, 2004

B. KEITH SKINNER, P.E.
PROJECT ENGINEER
MICHAEL T. MERRITT, P.E.
PROJECT DESIGN ENGINEER

NCDOT CONTACT:

TERESA M. BRUTON, P.E.
PROJECT ENGINEER-DESIGN SERVICES

HYDRAULICS ENGINEER

Professional Engineer Seal for Michael H. Switzer, No. 18181, State of North Carolina.
SIGNATURE: [Signature] P.E.
DATE: 3/5/04
ROADWAY DESIGN
Professional Engineer Seal for Michael T. Merritt, No. 21122, State of North Carolina.
SIGNATURE: [Signature] P.E.
DATE: 3/5/04

DIVISION OF HIGHWAYS
STATE OF NORTH CAROLINA

Signature of Michael Miller, P.E.
STATE DESIGN ENGINEER
DEPARTMENT OF TRANSPORTATION
FEDERAL HIGHWAY ADMINISTRATION
APPROVED
DIVISION ADMINISTRATOR
DATE

D:\23\03_14\12\55_Roadway\Proj\B3607_RDY_TSH.dgn